

District I - (575) 393-6161

1625 N. French Dr., Hobbs, NM 88240

District II - (575) 748-1283

811 S. First St., Artesia, NM 88210

District III - (505) 334-6178

1000 Rio Brazos Rd., Aztec, NM 87410

District IV - (505) 476-3460

1220 S. St. Francis Dr., Santa Fe, NM 87505

OIL CONSERVATION DIVISION
1220 South St. Francis Dr.
Santa Fe, NM 87505

WELL API NO.

30-041-20974

5. Indicate Type of Lease

STATE ☐ FEE ☒

6. State Oil & Gas Lease No.

7. Lease Name or Unit Agreement Name

Susie Q

8. Well Number

1

9. OGRID Number

1092

10. Pool name or Wildcat

Tanneyhill; Fusselman East

SUNDRY NOTICES AND REPORTS ON WELLS

(DO NOT USE THIS FORM FOR PROPOSALS TO DRILL OR TO DEEPEN OR PLUG BACK TO A DIFFERENT RESERVOIR. USE "APPLICATION FOR PERMIT" (FORM C-101) FOR SUCH PROPOSALS.)

1. Type of Well: Oil Well ☒ Gas Well ☐ Other ☐

2. Name of Operator

ARMSTRONG ENERGY CORPORATION

3. Address of Operator

P.O. Box 1973, Roswell, NM 88202-1973

4. Well Location

Unit Letter C : 330 feet from the North line and 2253 feet from the West line
Section 2 Township 6S Range 34E NMPM Roosevelt County

11. Elevation (Show whether DR, RKB, RT, GR, etc.)

12. Check Appropriate Box to Indicate Nature of Notice, Report or Other Data

NOTICE OF INTENTION TO:

PERFORM REMEDIAL WORK ☐ PLUG AND ABANDON ☒
TEMPORARILY ABANDON ☐ CHANGE PLANS ☐
PULL OR ALTER CASING ☐ MULTIPLE COMPL ☐
DOWNHOLE COMMINGLE ☐
CLOSED-LOOP SYSTEM ☐OTHER: ☐

SUBSEQUENT REPORT OF:

REMEDIAL WORK ☐ ALTERING CASING ☐
COMMENCE DRILLING OPNS. ☐ P AND A ☐
CASING/CEMENT JOB ☐OTHER ☐

13. Describe proposed or completed operations. (Clearly state all pertinent details, and give pertinent dates, including estimated date of starting any proposed work). SEE RULE 19.15.7.14 NMAC. For Multiple Completions: Attach wellbore diagram of proposed completion or recompletion.

1. Set CIBP @ 7600' w/ 35' cement
2. Set 259' plug w/ 50 sx cmt inside 5.5" @ 6567'-6308' (DV Tool 6358' and Abo top plug 6517')
3. Set 100' plug w/ 25 sx cmt inside 5.5" csg, 4493-4393' (Glorieta top 4443')
4. Set 100' 8-5/8" shoe plug w/ 25 sx cmt inside 5.5" csg, 2498'-2398'
5. Perf 400', circulate cement to Surface
6. Surface plug.

4" dia 4' tall marker

See Attached
Conditions of Approval

Spot 25 SX CMT 1850 Top of SALT

Spud Date:

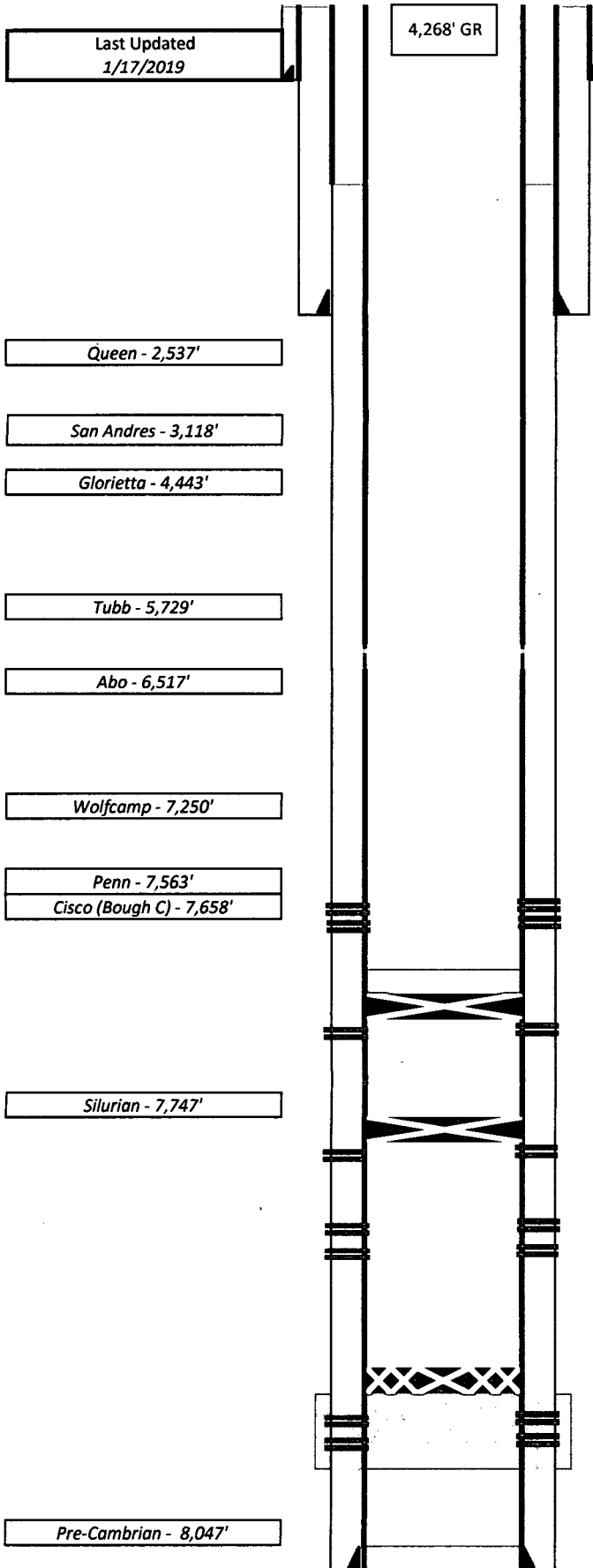
03-04-2018

Rig Release Date:

03-16-2018

I hereby certify that the information above is true and complete to the best of my knowledge and belief.

SIGNATURE Kyle Alpers TITLE VP - Engineering DATE 01/17/2019Type or print name Kyle Alpers E-mail address: kalpers@aecnm.com PHONE: 575-625-2222APPROVED BY: Kerry Fortner TITLE Compliance Officer A DATE 1-30-19
Conditions of Approval (if any):



Conductor
12 1/4" hole
TOC @ at least 860' (CBL)
8 5/8" 24#&32#/ft LTC J-55 @ 2,448'
875sx/200sx Extenda/C - 365sx Circ
7 7/8" hole
DV Tool 6358'
Upper Penn 12/27/18 - 1/3/19
7,641'-7,645' 2 spf
7,692'-7,695' 2 spf
CIBP@7,770' w/35' cement
Middle Penn 12/6/18
7,758'-7,788', 7,791'-7,794', 7,797'-7,802'
7,804'-7,806', 7,808'-7,812'
Bridge Plug @ 7,816'
Upper Fusselman 5/18/18
7,821'-7,824' 2 spf
Middle Fusselman 10/5/18 - 11/28/18
7,828'-7,834'
7,848'-7,850', 7,853'-7,859'
Cement Retainer @ 7,876', sqz'd w/70sx H 5/16/18
Fusselman 4/20/18-4/25/18
7,900'-7,902' 2spf
7,884'-7,888', 7,892'-7,896' 2spf
5.5" 15.5# & 17#/ft, J-55 LT&C @ 8162'
325sx Versa 1st stg, circ + 850sx Econo 2nd stg
TD 8,180' PBTD 7,972'

Armstrong Energy Corporation Susie Q #1 Unit N, 330' FNL & 2253' FWL Section 2, T6S, R34E Roosevelt County, NM 33.820661° N, 103.436556° W API Number 30-005-20974 Spud Date: 3/4/2018
Downhole Production Equipment
Surface Production Equipment
Notes

500gal 15% NEFE
2500gal 15% NEFE
250g 20% NEFE acid Flowed 2.5MMCFD FR @ 1425psi
2000gal 15% NEFE 2000gal 15% NEFE w/balls
250gal 15% NEFE shot acid 2000gal 15% NEFE w/balls



Proposed Plugging Procedure

Last Updated
1/17/2019

4,268' GR

Queen - 2,537'

San Andres - 3,118'

Glorietta - 4,443'

Tubb - 5,729'

Abo - 6,517'

Wolfcamp - 7,250'

Penn - 7,563'

Cisco (Bough C) - 7,658'

Silurian - 7,747'

Pre-Cambrian - 8,047'

Conductor

Surface Plug

Perforate @ 400', circulate cement
to surface

12 1/4" hole

TOC @ at least 860' (CBL)

8 5/8" 24#&32#/ft LTC J-55 @ 2,448'

875sx/200sx Extenda/C - 365sx Circ

100' 8 5/8" shoe plug
from 2,498'-2,398'

7 7/8" hole

100' plug from 6374' - 6274'

DV Tool 6358'

100' plug @ top of Abo 6,500'-6,600'

CIBP @ 7600' w/35' cement

Upper Penn 12/27/18 - 1/3/19

7,641'-7,645' 2 spf

7,692'-7,695' 2 spf

500gal 15% NEFE

CIBP @ 7,770' w/35' cement

Middle Penn 12/6/18

7,758'-7,788', 7,791'-7,794', 7,797'-7,802'

7,804'-7,806', 7,808'-7,812'

2500gal 15% NEFE

Bridge Plug @ 7,816'

Upper Fusselman 5/18/18

7,821'-7,824' 2 spf

250g 20% NEFE acid

Flowed 2.5MMCFD FR @ 1425psi

Middle Fusselman 10/5/18 - 11/28/18

7,828'-7,834'

7,848'-7,850', 7,853'-7,859'

2000gal 15% NEFE

2000gal 15% NEFE w/balls

Cement Retainer @ 7,876', sqz'd w/70sx H 5/16/18

Fusselman 4/20/18-4/25/18

7,900'-7,902' 2spf

7,884'-7,888', 7,892'-7,896' 2spf

250gal 15% NEFE shot acid

2000gal 15% NEFE w/balls

5.5" 15.5# & 17#/ft, J-55 LT&C @ 8162'

325sx Versa 1st stg, circ + 850sx Econo 2nd stg

TD 8,180'

PBTD 7,972'

Armstrong Energy Corporation

Susie Q #1

Unit N, 330' FNL & 2253' FWL
Section 2, T6S, R34E
Roosevelt County, NM
33.820661° N, 103.436556° W
API Number **30-005-20974**
Spud Date: 3/4/2018

Downhole Production
Equipment

Surface Production
Equipment

Notes



500 North Main Street, Suite 200
P.O. Box 1973
Roswell, New Mexico 88202-1973
(575) 625-2222
Fax (575) 622-2512

January 17, 2019

HOBBS OCD
JAN 23 2019
RECEIVED

Mr. Paul Kautz
Oil Conservation Division
1625 N. French Drive
Hobbs, New Mexico 88240

Re: Susie Q #1
Township 6 South, Range 34 East, NMPM
Section 2
Roosevelt County, New Mexico

Dear Mr. Kautz:

Enclosed is the C-103 Sundry Notice and Reports on Wells, Notice of Intent to Plug and Abandon, for the Susie Q #1. Also enclosed are copies of the Wellbore Diagrams, Current and Plugging.

If you have any questions, please contact Kyle Alpers at 575-625-2222.

Sincerely,

ARMSTRONG ENERGY CORPORATION

By: Irma Cunningham
Irma Cunningham, Geo Tech

Enclosures

GENERAL CONDITIONS OF APPROVAL:

- 1) Insure all bradenheads have been exposed, identified, and valves are operational prior to rigging up on well.
- 2) Contact the appropriate NMOCD District Office no later than 24 hours prior to moving in and rigging up.
- 3) A copy of the approved C103 intent to P&A should be distributed to the onsite company and plugging representatives. Approved procedures are good for a period of one year from approved date, unless otherwise specified on the C103 intent. Approvals past this date will require the submission and approval of a new C103 intent.
- 4) A company representative is required to be present to witness all operations including setting CIBP's, circulation of mud laden fluids, perforating, squeezing or spotting cement plugs, tags, or any other operations approved on the C103 intent to P&A. Company representative should contact the NMOCD and report all operations.
- 5) Any changes that may be required during plugging operations should be approved by the NMOCD before proceeding.
- 6) A closed loop system is to be used for all plugging operations. Contents of the steel pits to be hauled to a NMOCD permitted disposal facility.
- 7) Mud laden fluids must be placed between all cement plugs mixed at 25 sacks of salt gel per 100 barrels of brine.
- 8) All cement plugs will be 100' or 25 sacks cement, whichever is greater. Class 'C' cement will be used above 7500' and Class 'H' below 7500'. Plugs should be no more than 3000' apart
- 9) Site remediation due within one year of well plugging completion.