

DISTRICT I  
1625 N. French Dr., Hobbs, NM 88240

DISTRICT II  
811 South First, Artesia, NM 88210

DISTRICT III  
1000 Rio Brazos Rd., Artesia, NM 87410

DISTRICT IV  
2040 South Pacheco, Santa Fe, NM 87505

AS- LED PLAT  
State of New Mexico

Energy, Minerals and Natural Resources Department

Form C-102  
Revised August 1, 2011

Submit one copy to Appropriate  
District Office

HOBBS OCD

FEB - 4 2019

RECEIVED

OIL CONSERVATION DIVISION

Santa Fe, New Mexico 87505

AMENDED REPORT

WELL LOCATION AND ACREAGE DEDICATION PLAT

As Drilled

API Number 30-025-44607	Pool Code 98275	Pool Name WC-025 G-09 S243516D; LWR BONESPRING
Property Code 317499	Property Name ANGUS STATE 24-35 16	Well Number 456H
OGRID No. 162928	Operator Name ENERGEN RESOURCES CORPORATION	Elevation 3366'

Surface Location

UL or lot No.	Section	Township	Range	Lot Idn	Feet from the	North/South line	Feet from the	East/West line	County
A	16	24-S	35-E		510'	NORTH	449'	EAST	LEA

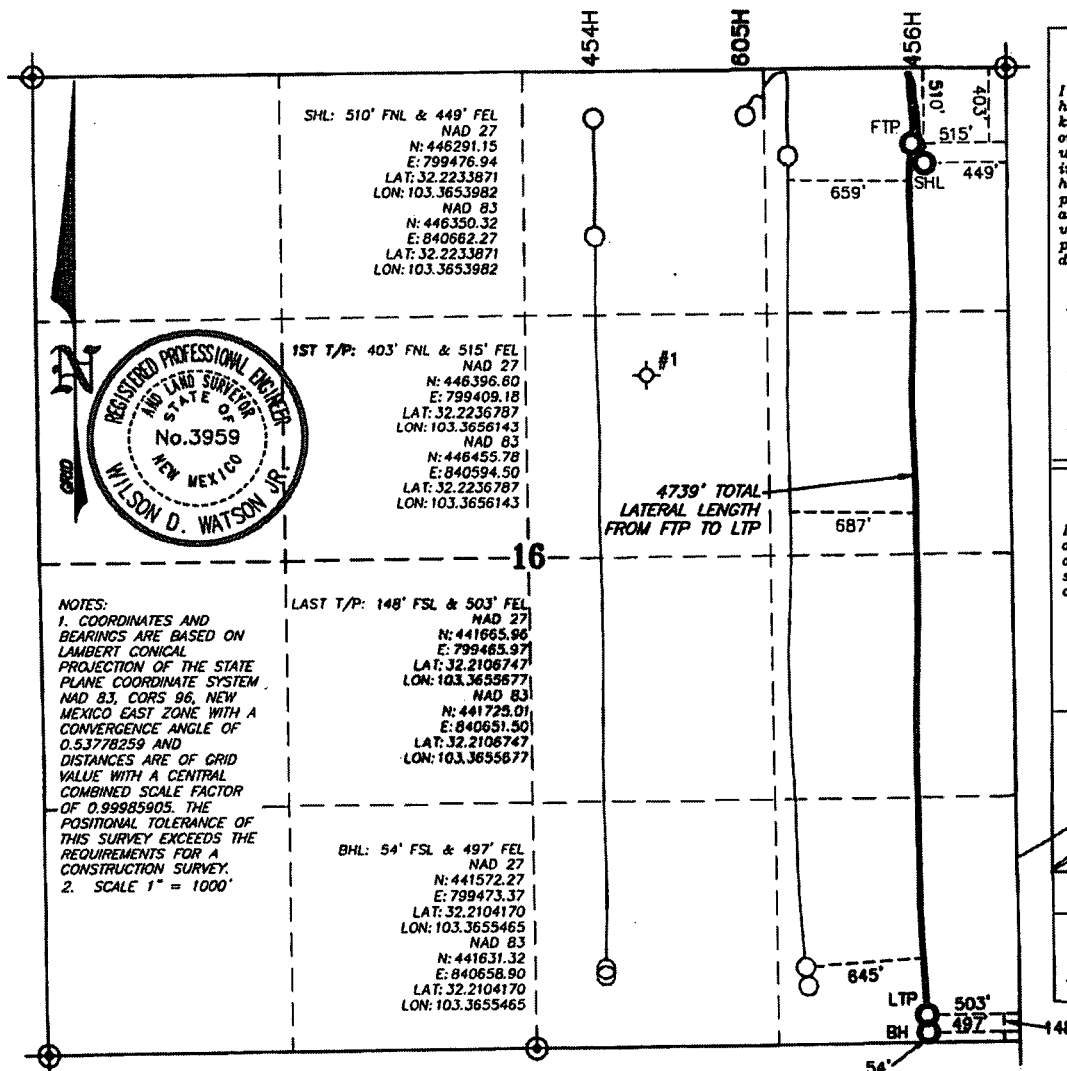
Bottom Hole Location If Different From Surface

UL or lot No.	Section	Township	Range	Lot Idn	Feet from the	North/South line	Feet from the	East/West line	County
P	16	24-S	35-E		54'	SOUTH	497'	EAST	LEA

Dedicated Acres	Joint or Infill	Consolidation Code	Order No.
160			

NO ALLOWABLE WILL BE ASSIGNED TO THIS COMPLETION UNTIL ALL INTERESTS HAVE BEEN CONSOLIDATED  
OR A NON-STANDARD UNIT HAS BEEN APPROVED BY THE DIVISION

AS DRILLED PLAT



OPERATOR CERTIFICATION

I hereby certify that the information contained herein is true and complete to the best of my knowledge and belief, and that this organization either owns a working interest or unleased mineral interest in the land including the proposed bottom hole location or has a right to drill this well at this location pursuant to a contract with an owner of such a mineral or working interest, or to a voluntary pooling agreement or compulsory pooling order heretofore entered by the division.

Brenda F. Rathjen 10/10/18  
Signature Date

Brenda F. Rathjen

Printed Name

10/10/2018

Date

SURVEYOR CERTIFICATION

I hereby certify that the well location shown on this plat was plotted from field notes of actual surveys made by me or under my supervision, and that the same is true and correct to the best of my belief.

FEBRUARY 20, 2018

Date Surveyed

Signature & Seal of  
Professional Surveyor

OCTOBER 1, 2018

Signature Date

Certificate No. WILSON D. WATSON JR.  
P.L.S. #3959

W017-1140-00, FILE: D:\PROJECTS\WATSON\1745.RISE  
WATSON PROFESSIONAL GROUP INC