

District I  
1625 N. French Dr., Hobbs, NM 88240  
District II  
811 S. First St., Artesia, NM 88210  
District III  
1000 Rio Brazos Road, Aztec, NM 87410  
District IV  
1220 S. St. Francis Dr., Santa Fe, NM 87505

State of New Mexico  
Energy, Minerals and Natural Resources Department  
Oil Conservation Division  
1220 South St. Francis Dr.  
Santa Fe, NM 87505

Submit Original  
to Appropriate  
District Office

HOBBS OGD  
FEB 13 2019  
RECEIVED

**GAS CAPTURE PLAN**

Date: 08/29/2018

☒ Original  
☐ Amended - Reason for Amendment: \_\_\_\_\_

Operator & OGRID No.: EOG Resources, Inc. 7377

This Gas Capture Plan outlines actions to be taken by the Operator to reduce well/production facility flaring/venting for new completion (new drill, recomple to new zone, re-frac) activity.

Note: Form C-129 must be submitted and approved prior to exceeding 60 days allowed by Rule (Subsection A of 19.15.18.12 NMAC).

**Well(s)/Production Facility – Name of facility**

The well(s) that will be located at the production facility are shown in the table below.

Well Name	API	Well Location (ULSTR)	Footages	Expected MCF/D	Flared or Vented	Comments
Caballo 23 Fed 705H	30-025-***	N-23-25S-33E	300 FSL & 2231 FWL	±3500	None Planned	APD Submission
Caballo 23 Fed 706H	30-025-***	N-23-25S-33E	300 FSL & 2264 FWL	±3500	None Planned	APD Submission
Caballo 23 Fed 707H	30-025-***	O-23-25S-33E	300 FSL & 2098 FEL	±3500	None Planned	APD Submission
Caballo 23 Fed 708H	30-025-***	O-23-25S-33E	300 FSL & 2065 FEL	±3500	None Planned	APD Submission
Caballo 23 Fed 709H	30-025-***	O-23-25S-33E	300 FSL & 2032 FEL	±3500	None Planned	APD Submission
Caballo 23 Fed 710H 44489	30-025-***	P-23-25S-33E	300 FSL & 639 FEL	±3500	None Planned	APD Submission

**Gathering System and Pipeline Notification**

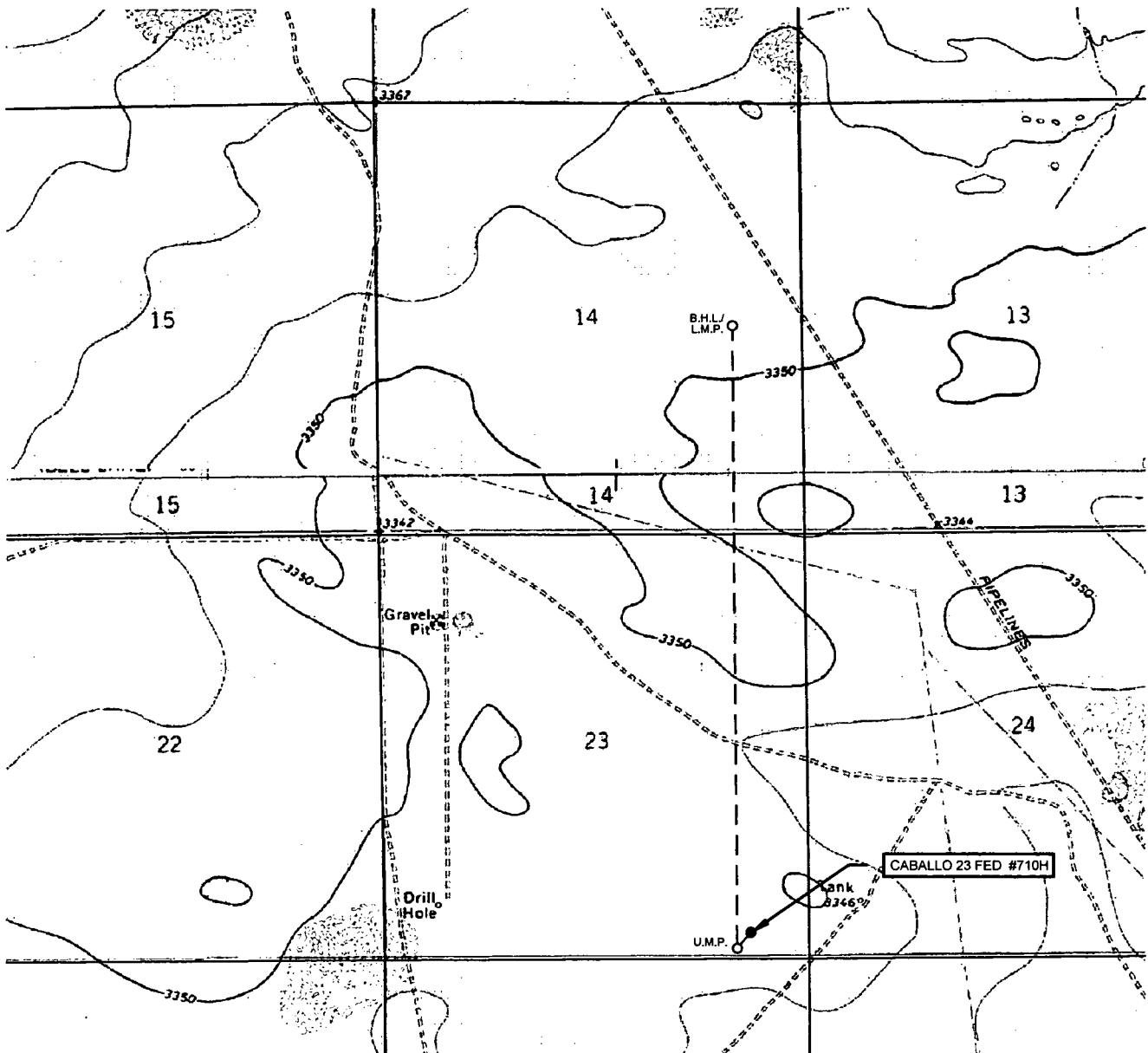
Well(s) will be connected to a production facility after flowback operations are complete, if gas transporter system is in place. The gas produced from production facility is dedicated to **Enterprise Field Services** and will be connected to **EOG Resources** low/high pressure gathering system located in **Eddy/Lea County, New Mexico**. **EOG Resources** provides (periodically) to **Enterprise Field Services** a drilling, completion and estimated first production date for wells that are scheduled to be drilled in the foreseeable future. In addition, **EOG Resources** and **Enterprise Field Services** have periodic conference calls to discuss changes to drilling and completion schedules. Gas from these wells will be processed at **Enterprise Field Services** Processing Plant located in **Lea County, New Mexico**. The actual flow of the gas will be based on compression operating parameters and gathering system pressures.

**Flowback Strategy**

After the fracture treatment/completion operations, well(s) will be produced to temporary production tanks and gas will be flared or vented. During flowback, the fluids and sand content will be monitored. When the produced fluids contain minimal sand, the wells will be turned to production facilities. Gas sales should start as soon as the wells start flowing through the production facilities, unless there are operational issues on **Enterprise Field Services** system at that time. Based on current information, it is **EOG Resources'** belief the system can take this gas upon completion of the well(s).

Safety requirements during cleanout operations from the use of underbalanced air cleanout systems may necessitate that sand and non-pipeline quality gas be vented and/or flared rather than sold on a temporary basis.

# LOCATION & ELEVATION VERIFICATION MAP



LEASE NAME & WELL NO.: CABALLO 23 FED #710H

SECTION 23 TWP 25-S RGE 33-E SURVEY N.M.P.M.  
 COUNTY LEA STATE NM ELEVATION 3345'  
 DESCRIPTION 300' FSL & 639' FEL

LATITUDE N 32.1095936 LONGITUDE W 103.5366624



SCALE: 1" = 2000'  
 0' 1000' 2000'

THIS EASEMENT/SERVITUDE LOCATION SHOWN HEREON HAS BEEN SURVEYED ON THE GROUND UNDER MY SUPERVISION AND PREPARED ACCORDING TO THE EVIDENCE FOUND AT THE TIME OF SURVEY, AND DATA PROVIDED BY EOG RESOURCES, INC. THIS CERTIFICATION IS MADE AND LIMITED TO THOSE PERSONS OR ENTITIES SHOWN ON THE FACE OF THIS PLAT AND IS NON-TRANSFERABLE. THIS SURVEY IS CERTIFIED FOR THIS TRANSACTION ONLY.

ALL BEARINGS, DISTANCES, AND COORDINATE VALUES CONTAINED HEREON ARE GRID BASED UPON THE NEW MEXICO COORDINATE SYSTEM OF 1983, EAST ZONE, U.S. SURVEY FEET.



**TOPOGRAPHIC**  
 LOYALTY INNOVATION LEGACY

1400 EVERMAN PARKWAY, Ste. 146 • FT. WORTH, TEXAS 76140  
 TELEPHONE: (817) 744-7512 • FAX (817) 744-7554  
 2803 NORTH BIG SPRING • MIDLAND, TEXAS 79705  
 TELEPHONE: (432) 682-1653 OR (800) 767-1653 • FAX (432) 682-1743  
 WWW.TOPOGRAPHIC.COM