

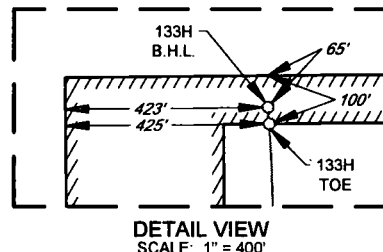
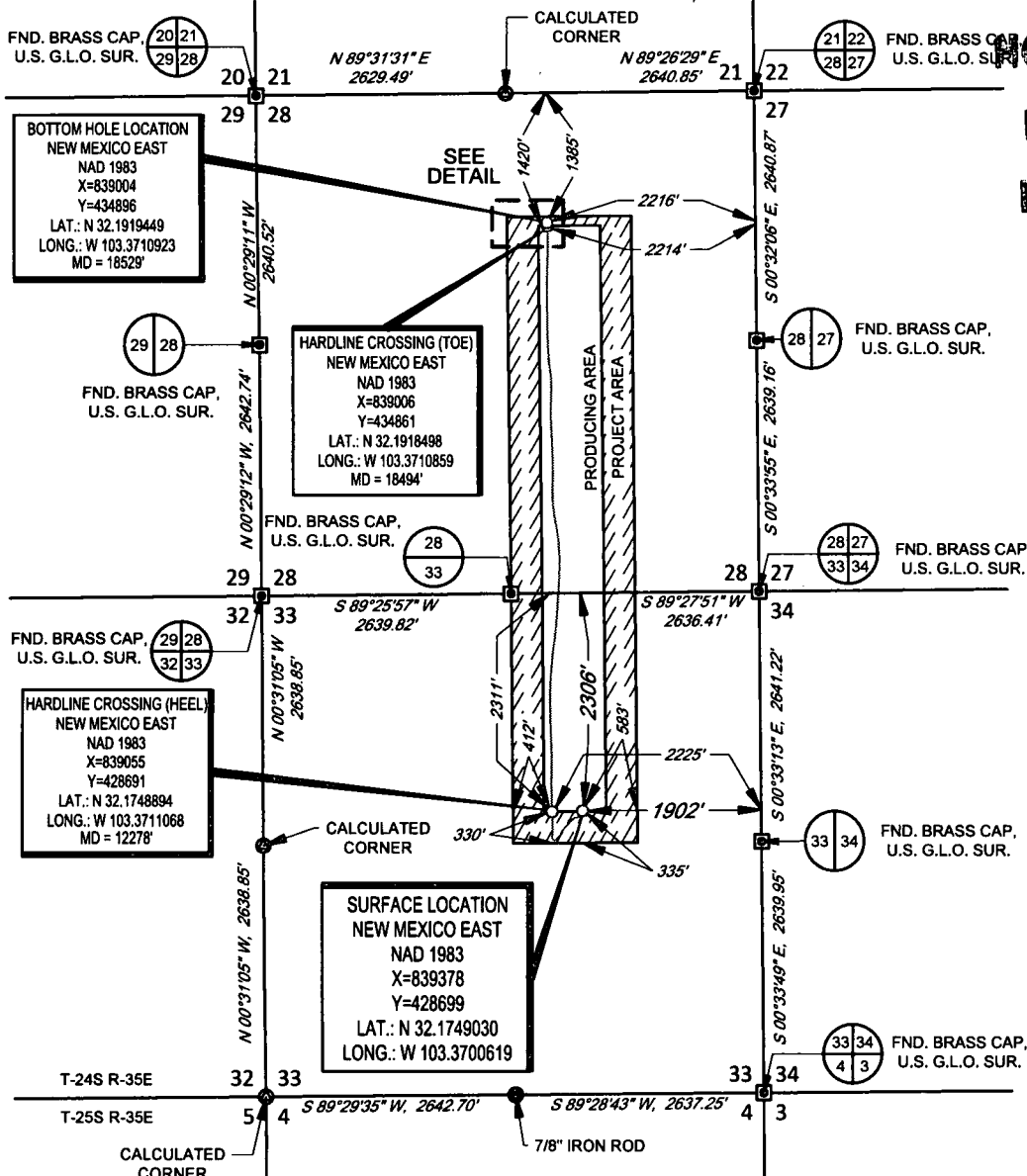
SCALE: 1" = 2000'

SECTION 33, TOWNSHIP 24-S, RANGE 35-E, N.M.P.M.
LEA COUNTY, NEW MEXICO

HOBBS OCD

FEB - 7 2019

RECEIVED



LEASE NAME & WELL NO.: COSMO K 24S35E3328 133H
SECTION 33 TWP 24-S RGE 35-E SURVEY N.M.P.M.
COUNTY LEA STATE NM ELEVATION 3289'
DESCRIPTION 2306' FNL & 1902' FEL

INTERNAL
PRE-COMPLETION
PLAT



TOPOGRAPHIC
LOYALTY INNOVATION LEGACY

1400 EVERMAN PARKWAY, Ste. 146 • FT. WORTH, TEXAS 76140
TELEPHONE: (817) 744-7512 • FAX (817) 744-7554
2903 NORTH BIG SPRING • MIDLAND, TEXAS 79705
TELEPHONE: (432) 682-1853 OR (800) 767-1653 • FAX (432) 682-1743
WWW.TOPOGRAPHIC.COM

Stan W. Lloyd, P.S. No. 19642
OCTOBER 3, 2018

COSMO K 24S35E3328 133H PRE-COMPLETION	REVISION:	
DATE:	10/03/18	
FILE:	C:\COSMO_K_24S35E3328_133H	
DRAWN BY:	GJU	
SHEET:	1 OF 1	

- NOTES:
1. ORIGINAL DOCUMENT SIZE: 8.5" X 11"
 2. ALL BEARINGS, DISTANCES, AND COORDINATE VALUES CONTAINED HEREIN ARE GRID BASED UPON THE NEW MEXICO COORDINATE SYSTEM OF 1983, EAST ZONE, U.S. SURVEY FEET.
 3. THIS WELL LOCATION SHOWN HEREON HAS BEEN SURVEYED ON THE GROUND UNDER MY SUPERVISION AND PREPARED ACCORDING TO THE EVIDENCE FOUND AT THE TIME OF SURVEY, AND DATA PROVIDED BY TAP ROCK OPERATING, LLC. THIS CERTIFICATION IS MADE AND LIMITED TO THOSE PERSONS OR ENTITIES SHOWN ON THE FACE OF THIS PLAT AND IS NON-TRANSFERABLE. THIS SURVEY IS CERTIFIED FOR THIS TRANSACTION ONLY.