

District I
1625 N. French Dr., Hobbs, NM 88240
Phone: (575) 393-6161 Fax: (575) 393-0720
District II
811 S. First St., Artesia, NM 88210
Phone: (575) 748-1283 Fax: (575) 748-9720
District III
1000 Rio Brazos Road, Aztec, NM 87410
Phone: (505) 334-6178 Fax: (505) 334-6170
District IV
1220 S. St. Francis Dr., Santa Fe, NM 87505
Phone: (505) 476-3460 Fax: (505) 476-3462

State of New Mexico
Energy, Minerals & Natural Resources **HOBBS OCD**
Department
OIL CONSERVATION DIVISION **FEB 20 2019**
1220 South St. Francis Dr.
Santa Fe, NM 87505

FORM C-102
Revised August 1, 2011
Submit one copy to appropriate
District Office

RECEIVED ☒ AMENDED REPORT

WELL LOCATION AND ACREAGE DEDICATION PLAT

As Drilled

¹ API Number 30-025-44969	² Pool Code 98098	³ Pool Name NC-025 G09 5243532M; Halfbone
⁴ Property Code 321012	⁵ Property Name COSMO K 24S35E3328	⁶ Well Number 113H
⁷ GRID No. 372043	⁸ Operator Name TAP ROCK OPERATING, LLC.	⁹ Elevation 3288'

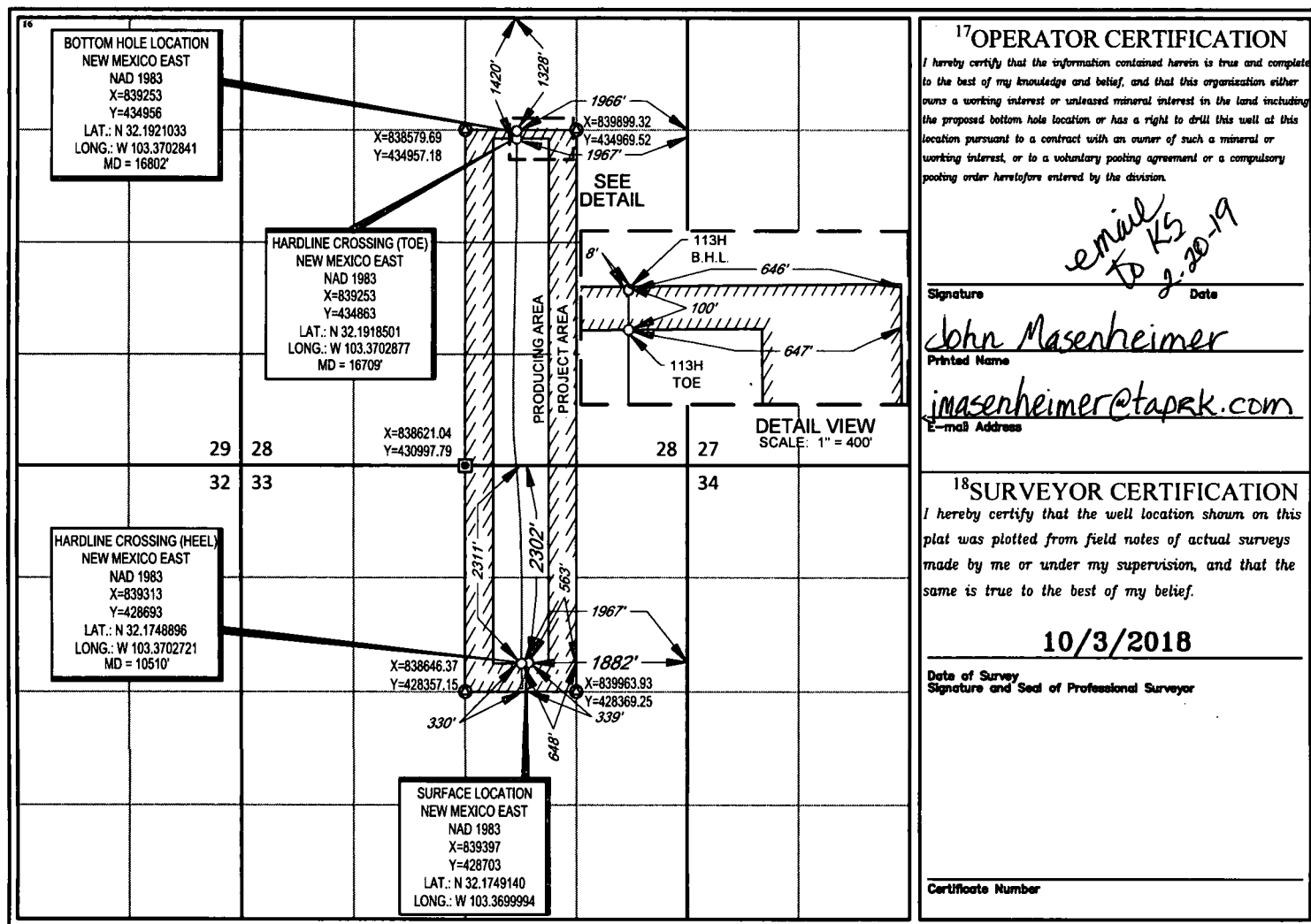
¹⁰Surface Location

UL or lot no.	Section	Township	Range	Lot Idn	Feet from the	North/South line	Feet from the	East/West line	County
G	33	24-S	35-E	-	2302'	NORTH	1877'	EAST	LEA

UL or lot no.	Section	Township	Range	Lot Idn	Feet from the	North/South line	Feet from the	East/West line	County
G	28	24-S	35-E	-	1328'	NORTH	1966'	EAST	LEA

¹² Dedicated Acres	¹³ Joint or Infill	¹⁴ Consolidation Code	¹⁵ Order No.

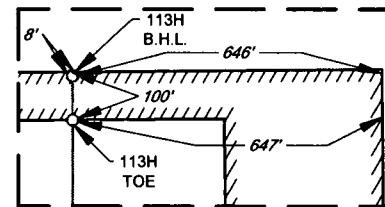
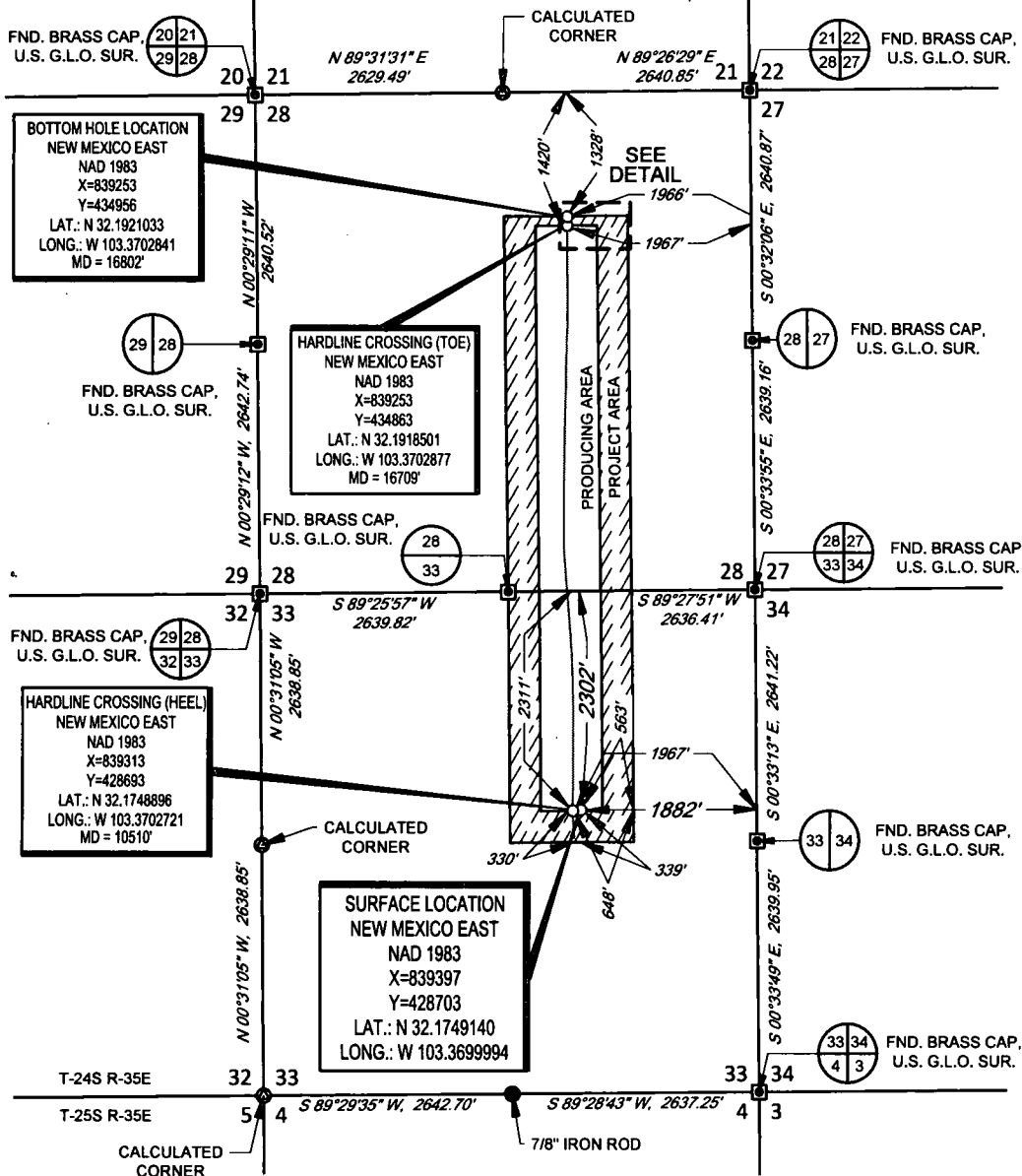
No allowable will be assigned to this completion until all interests have been consolidated or a non-standard unit has been approved by the division.



SCALE: 1" = 2000'

0' 1000' 2000'

SECTION 33, TOWNSHIP 24-S, RANGE 35-E, N.M.P.M.
LEA COUNTY, NEW MEXICO



DETAIL VIEW
SCALE: 1" = 400'

LEASE NAME & WELL NO.: COSMO K 24S35E3328 113H
SECTION 33 TWP 24-S RGE 35-E SURVEY N.M.P.M.
COUNTY LEA STATE NM ELEVATION 3288'
DESCRIPTION 2302' FNL & 1882' FEL

INTERNAL
PRE-COMPLETION
PLAT



TOPOGRAPHIC
LOYALTY INNOVATION LEGACY

1400 EVERMAN PARKWAY, Ste. 146 • FT. WORTH, TEXAS 76140
TELEPHONE: (817) 744-7512 • FAX (817) 744-7554
2903 NORTH BIG SPRING • MIDLAND, TEXAS 79705
TELEPHONE: (432) 682-1653 OR (800) 767-1653 • FAX (432) 682-1743
WWW.TOPOGRAPHIC.COM

Stan W. Lloyd, P.S. No. 19642
OCTOBER 3, 2018

COSMO K 24S35E3328 113H PRE-COMPLETION	REVISION:	<p>NOTES:</p> <ol style="list-style-type: none"> 1. ORIGINAL DOCUMENT SIZE: 8.5" X 11" 2. ALL BEARINGS, DISTANCES, AND COORDINATE VALUES CONTAINED HEREIN ARE GRID BASED UPON THE NEW MEXICO COORDINATE SYSTEM OF 1983, EAST ZONE, U.S. SURVEY FEET. 3. THIS WELL LOCATION SHOWN HEREON HAS BEEN SURVEYED ON THE GROUND UNDER MY SUPERVISION AND PREPARED ACCORDING TO THE EVIDENCE FOUND AT THE TIME OF SURVEY, AND DATA PROVIDED BY TAP ROCK OPERATING, LLC. THIS CERTIFICATION IS MADE AND LIMITED TO THOSE PERSONS OR ENTITIES SHOWN ON THE FACE OF THIS PLAT AND IS NON-TRANSFERABLE. THIS SURVEY IS CERTIFIED FOR THIS TRANSACTION ONLY.
DATE: 10/03/18		
FILE: C:\COSMO_K_24S35E3328_113H_REV1		
DRAWN BY: GJU		
SHEET: 1 OF 1		