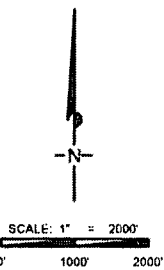
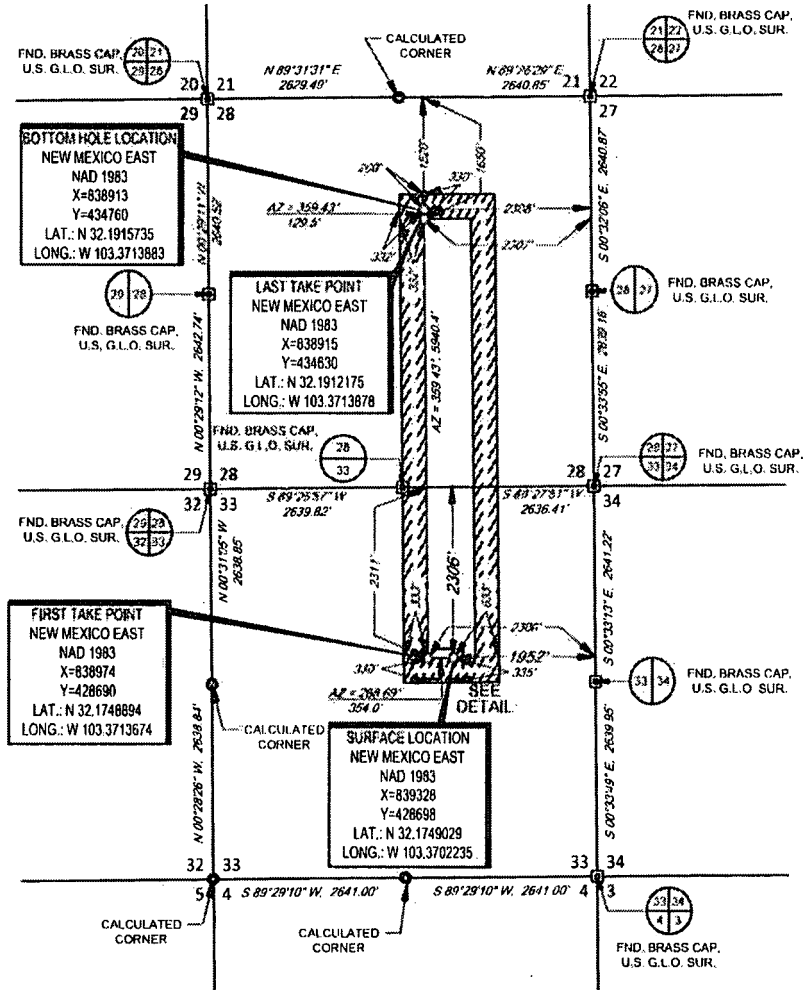


TAP ROCK

EXHIBIT 2A

SECTION 33, TOWNSHIP 24-S, RANGE 35-E, N.M.P.M.
LEA COUNTY, NEW MEXICO



LEASE NAME & WELL NO.: COSMO K 24S35E3328 213H

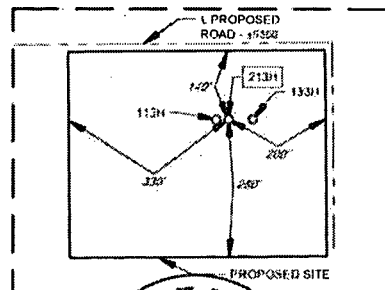
SECTION 33 TWP 24-S RGE 35-E SURVEY N.M.P.M.
COUNTY LEA STATE NM
DESCRIPTION 2306' FNL & 1952' FEL

DISTANCE & DIRECTION

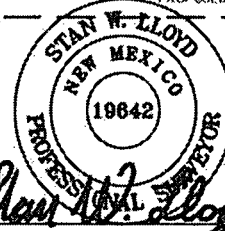
FROM INT. OF NM-128 & NM-18, GO WEST ON NM-128 ±12.4 MILES.
THENCE NORTH (RIGHT) ON A PROPOSED RD. ±5360 FEET TO A
POINT ±342 FEET SOUTHEAST OF THE LOCATION.

ALL BEARINGS, DISTANCES, AND COORDINATE VALUES CONTAINED HEREON ARE GRID
BASED UPON THE NEW MEXICO COORDINATE SYSTEM OF 1983, EAST ZONE, U.S. SURVEY
FEET.

THIS EASEMENT/SERVITUDE LOCATION SHOWN HEREON HAS BEEN SURVEYED ON THE GROUND
UNDER MY SUPERVISION AND PREPARED ACCORDING TO THE EVIDENCE FOUND AT THE TIME OF
SURVEY, AND DATA PROVIDED BY TAP ROCK OPERATING LLC. THIS CERTIFICATION IS MADE AND
LIMITED TO THOSE PERSONS OR ENTITIES SHOWN ON THE FACE OF THIS PLAT AND IS
NON-TRANSFERABLE. THIS SURVEY IS CERTIFIED FOR THIS TRANSACTION ONLY.



DETAIL VIEW
SCALE: 1" = 300'



Stan W. Lloyd, P.S. No. 19042
JUNE 15, 2018

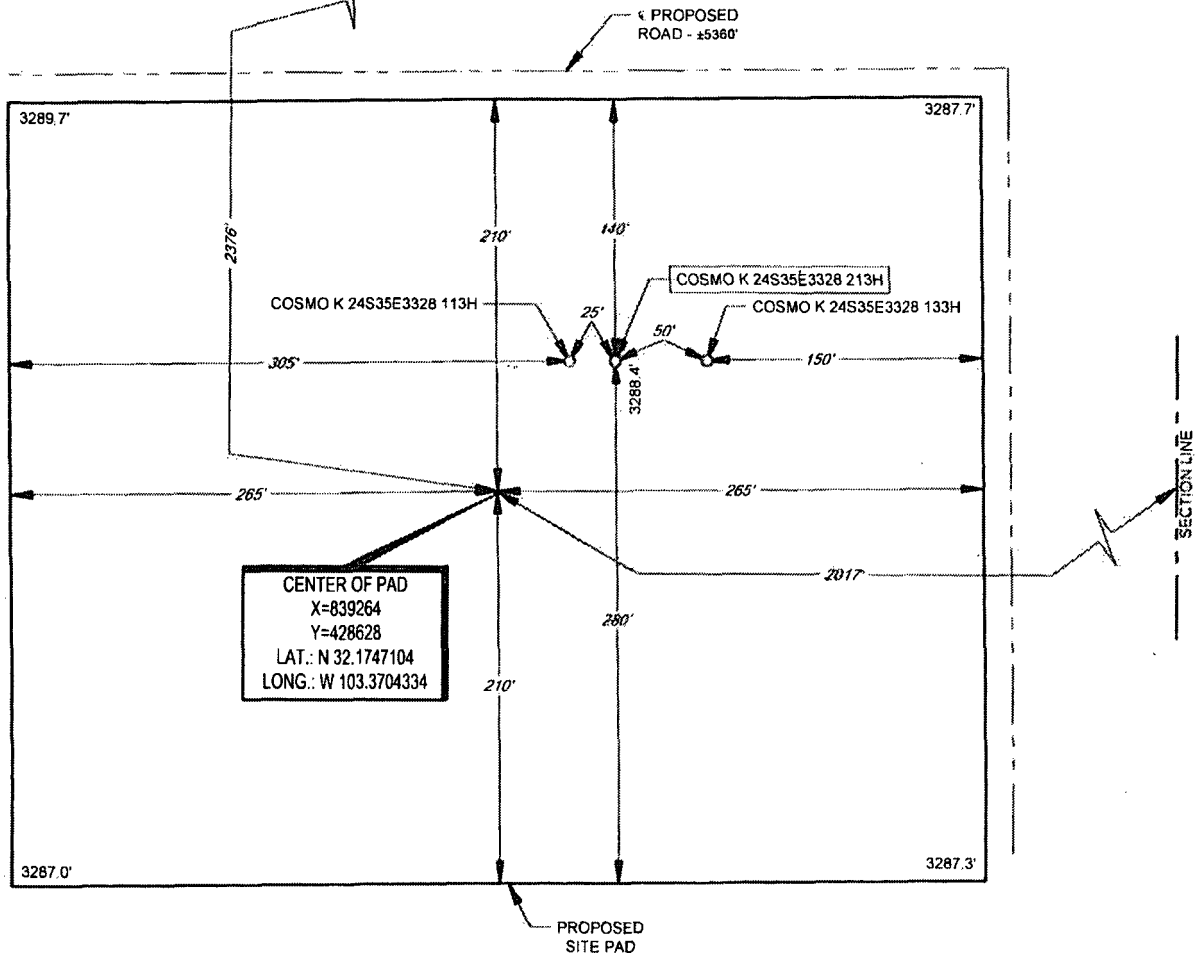
TOPOGRAPHIC
LOYALTY INNOVATION LEGACY
1400 EVERMAN PARKWAY, Ste. 140 • FT. WORTH, TEXAS 76140
TELEPHONE: (817) 244-7512 • FAX: (817) 244-7524
500 NORTH DIXIE SPRINGS • MARATHON, TEXAS 76661
TELEPHONE: (432) 682-1653 OR (800) 707-1653 • FAX: (432) 682-1743
WWW.TOPOGRAPHIC.COM

EXHIBIT 2B



SECTION 33, TOWNSHIP 24-S, RANGE 35-E, N.M.P.M.
LEA COUNTY, NEW MEXICO

DETAIL VIEW
SCALE: 1" = 100'
SECTION LINE

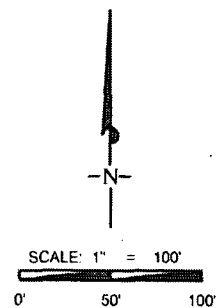


LEASE NAME & WELL NO.: COSMO K 24S35E3328 213H
213H LATITUDE N 32.1749029 213H LONGITUDE W 103.3702235

LEGEND

— PROPOSED ROAD
— SECTION LINE

CENTER OF PAD IS 2376' FNL & 2017' FEL



ALL BEARINGS, DISTANCES, AND COORDINATE VALUES CONTAINED HEREON ARE GRID BASED UPON THE NEW MEXICO COORDINATE SYSTEM OF 1983, EAST ZONE, U.S. SURVEY FEET.

THIS PROPOSED PAD SITE LOCATION SHOWN HEREON HAS BEEN SURVEYED ON THE GROUND UNDER MY SUPERVISION AND PREPARED ACCORDING TO THE EVIDENCE FOUND AT THE TIME OF SURVEY. AND DATA PROVIDED BY TAP ROCK OPERATING, LLC. THIS CERTIFICATION IS MADE AND LIMITED TO THOSE PERSONS OR ENTITIES SHOWN ON THE FACE OF THIS PLAT AND IS NON-TRANSFERABLE. THIS SURVEY IS CERTIFIED FOR THIS TRANSACTION ONLY.



TOPOGRAPHIC
LOYALTY INNOVATION LEGACY

1400 EVERMAN PARKWAY, Ste. 146 • FT. WORTH, TEXAS 76140
TELEPHONE: (817) 744-7512 • FAX: (817) 744-7554
2903 NORTH BIG SPRING • MIDLAND, TEXAS 79705
TELEPHONE: (432) 682-1653 OR (800) 767-1653 • FAX: (432) 682-1743
WWW.TOPOGRAPHIC.COM