

RECEIVED
FEB 26 2019

DISTRICT I
1625 N. FRENCH DR., HOBBS, NM 88240
Phone: (505) 393-6181 Fax: (505) 393-0720

DISTRICT II
611 S. FIRST ST., ARTESIA, NM 88210
Phone: (505) 748-1283 Fax: (505) 748-0720

DISTRICT III
1000 RIO BRAZOS RD., AZTEC, NM 87410
Phone: (505) 334-6178 Fax: (505) 334-6170

DISTRICT IV
1220 S. ST. FRANCIS DR., SANTA FE, NM 87506
Phone: (505) 476-3480 Fax: (505) 476-3462

State of New Mexico
Energy, Minerals & Natural Resources Department
OIL CONSERVATION DIVISION
1220 SOUTH ST. FRANCIS DR.
Santa Fe, New Mexico 87505

Form C-102
Revised August 1, 2011
Submit one copy to appropriate
District Office

☐ AMENDED REPORT

WELL LOCATION AND ACREAGE DEDICATION PLAT

API Number 30-024 45639		Pool Code 98135	Pool Name WC-025 G-09 S243310P;UPPER WOLFCAMP
Property Code	Property Name BELL LAKE 19-18 STATE COM		Well Number 31H
OGRID No. 6137	Operator Name DEVON ENERGY PRODUCTION COMPANY, L.P.		Elevation 3549.1'

Surface Location

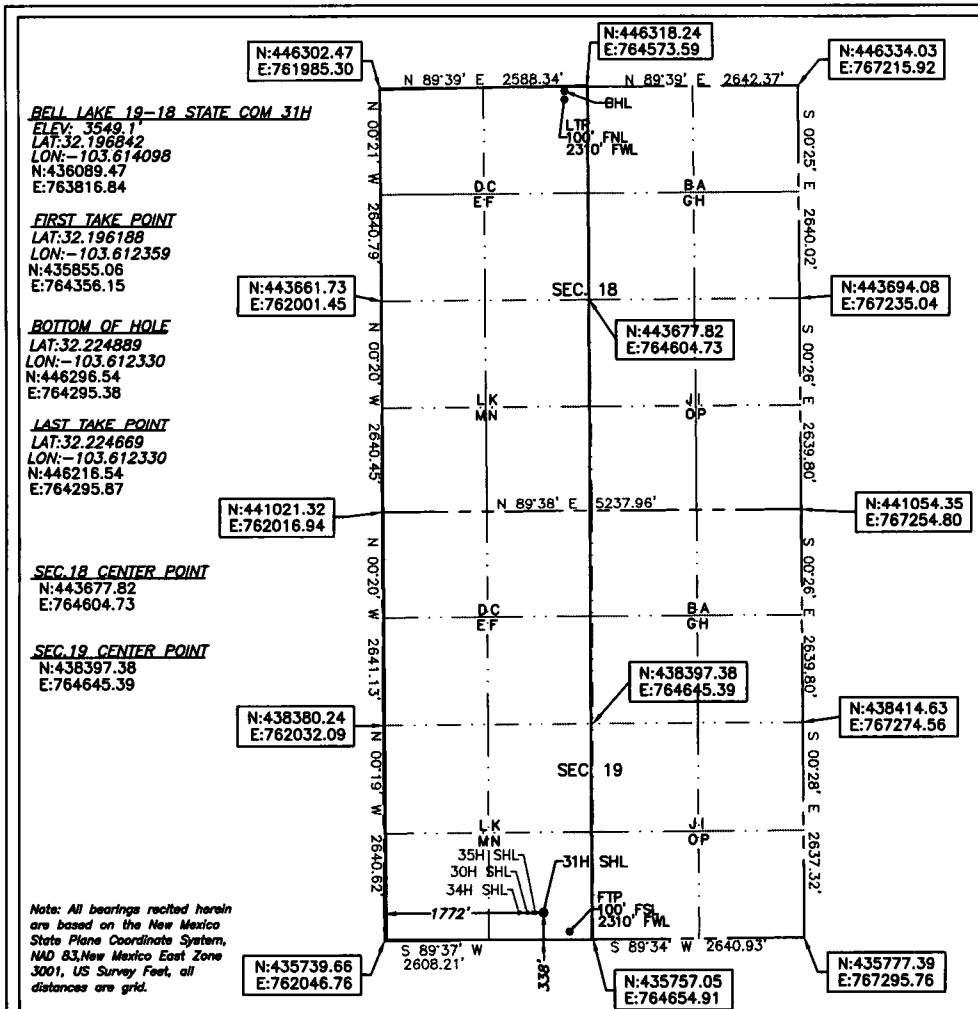
UL or lot No.	Section	Township	Range	Lot Idn	Feet from the	North/South line	Feet from the	East/West line	County
N	19	24-S	33-E		338	SOUTH	1772	WEST	LEA

Bottom Hole Location If Different From Surface

UL or lot No.	Section	Township	Range	Lot Idn	Feet from the	North/South line	Feet from the	East/West line	County
C	18	24-S	33-E		20	NORTH	2310	WEST	LEA

Dedicated Acres	Joint or Infill	Consolidation Code	Order No.
629.6			

NO ALLOWABLE WILL BE ASSIGNED TO THIS COMPLETION UNTIL ALL INTERESTS HAVE BEEN CONSOLIDATED OR A NON-STANDARD UNIT HAS BEEN APPROVED BY THE DIVISION



OPERATOR CERTIFICATION

I hereby certify that the information herein is true and complete to the best of my knowledge and belief, and that this organization either owns a working interest or unleased mineral interest in the land including the proposed bottom hole location or has a right to drill this well at this location pursuant to a contract with an owner of such mineral or working interest, or to a voluntary pooling agreement or a compulsory pooling order heretofore entered by the division.

Rebecca Deal 2/25/2019
Signature Date

Rebecca Deal, Regulatory Analyst
Printed Name

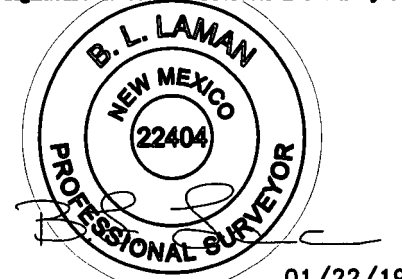
rebecca.deal@dmn.com
E-mail Address

SURVEYOR CERTIFICATION

I hereby certify that the well location shown on this plat was plotted from field notes of actual surveys made by me or under my supervision, and that the same is true and correct to the best of my belief.

1/2019
Date of Survey

Signature & Seal of Professional Surveyor



01/22/19
Certificate No. 22404 B.L. LAMAN
DRAWN BY: CM