

DISTRICT I  
1625 N. FRENCH DR., HOBBS, NM 88240  
Phone: (505) 395-6161 Fax: (505) 395-0720

DISTRICT II  
811 S. FIRST ST., ARTESIA, NM 88210  
Phone: (505) 748-1283 Fax: (505) 748-0720

DISTRICT III  
1000 RIO BRAZOS RD., AZTEC, NM 87410  
Phone: (505) 334-6176 Fax: (505) 334-6170

DISTRICT IV  
1820 S. ST. FRANCIS DR., SANTA FE, NM 87505  
Phone: (505) 478-3480 Fax: (505) 478-3482

State of New Mexico  
Energy, Minerals & Natural Resources Department  
**OIL CONSERVATION DIVISION**  
1220 SOUTH ST. FRANCIS DR.  
Santa Fe, New Mexico 87505

Form C-102

Revised August 1, 2011

Submit one copy to appropriate

District Office

FEB 26 2019

☐ AMENDED REPORT

**WELL LOCATION AND ACREAGE DEDICATION**

API Number <b>3002545640</b>	Pool Code <b>98135</b>	Pool Name <b>WC-025 G-09 S243310P; UPPER WOLFCAMP</b>
Property Code	Property Name <b>BELL LAKE 19-18 STATE COM</b>	Well Number <b>32H</b>
OGRID No. <b>6137</b>	Operator Name <b>DEVON ENERGY PRODUCTION COMPANY, L.P.</b>	Elevation <b>3540.5'</b>

**Surface Location**

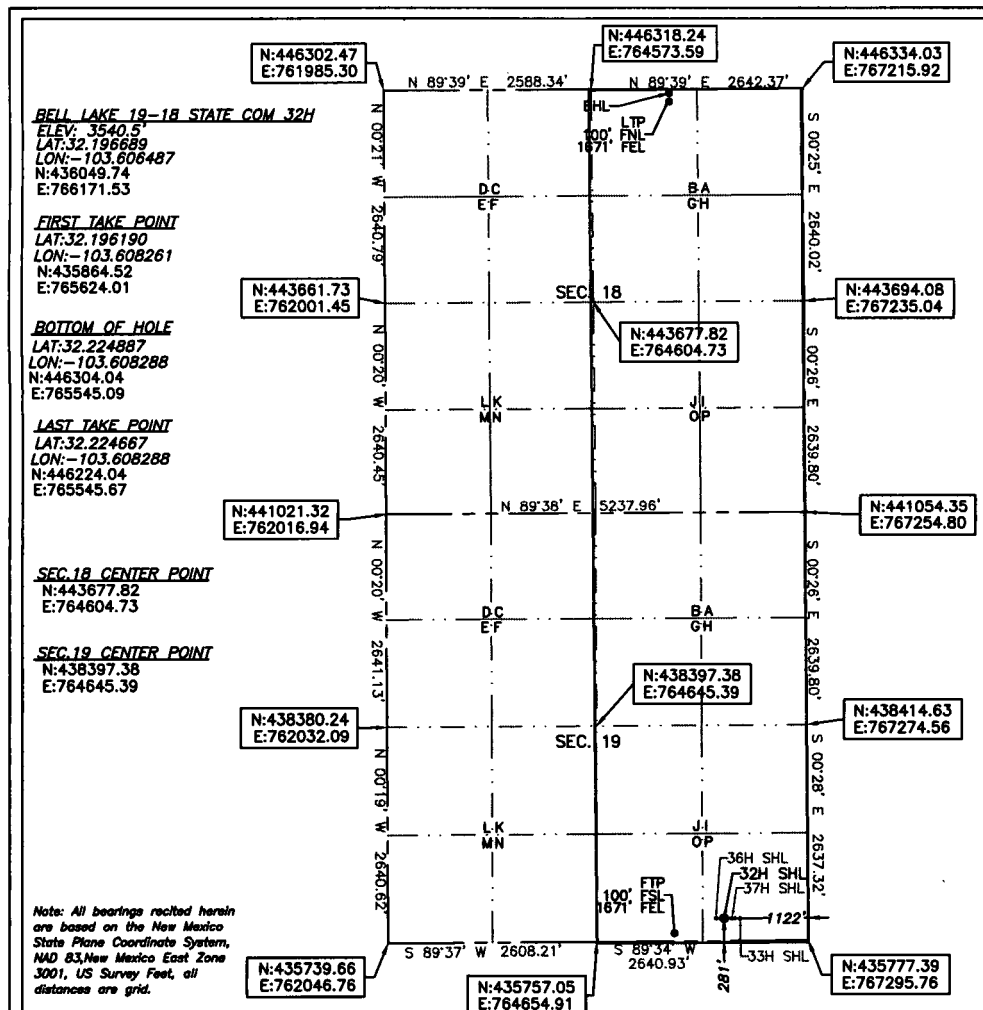
UL or lot No.	Section	Township	Range	Lot Idn	Feet from the	North/South line	Feet from the	East/West line	County
P	19	24-S	33-E		281	SOUTH	1122	EAST	LEA

**Bottom Hole Location If Different From Surface**

UL or lot No.	Section	Township	Range	Lot Idn	Feet from the	North/South line	Feet from the	East/West line	County
B	18	24-S	33-E		20	NORTH	1671	EAST	LEA

Dedicated Acres	Joint or Infill	Consolidation Code	Order No.
640			

NO ALLOWABLE WILL BE ASSIGNED TO THIS COMPLETION UNTIL ALL INTERESTS HAVE BEEN CONSOLIDATED  
OR A NON-STANDARD UNIT HAS BEEN APPROVED BY THE DIVISION



**OPERATOR CERTIFICATION**

I hereby certify that the information herein is true and complete to the best of my knowledge and belief, and that this organization either owns a working interest or unleased mineral interest in the land including the proposed bottom hole location or has a right to drill this well at this location pursuant to a contract with an owner of such mineral or working interest, or to a voluntary pooling agreement or a compulsory pooling order heretofore entered by the division.

Signature: Rebecca Deal Date: 2/25/2019  
Printed Name: Rebecca Deal, Regulatory Analyst  
E-mail Address: rebecca.deal@dmv.com

**SURVEYOR CERTIFICATION**

I hereby certify that the well location shown on this plat was plotted from field notes of actual surveys made by me or under my supervision, and that the same is true and correct to the best of my belief.

Signature & Seal of Professional Surveyor  
Date of Survey: 1/2019

Signature & Seal of Professional Surveyor  
**B. L. LAMAN**  
NEW MEXICO  
22404  
PROFESSIONAL SURVEYOR  
01/21/19  
Certificate No. 22404 **B.L. LAMAN**  
DRAWN BY: CM