

DISTRICT I
1825 N. French Dr., Hobbs, NM 88240
DISTRICT II
811 South First, Artesia, NM 88210
DISTRICT III
1000 Rio Brazos Rd., Artesia, NM 87410
DISTRICT IV
2040 South Pacheco, Santa Fe, NM 87505

State of New Mexico
Energy, Minerals and Natural Resources Department

Form C-102
Revised August 1, 2011

OIL CONSERVATION DIVISION

1220 South St. Francis Dr.
Santa Fe, New Mexico 87505

Submit one copy to Appropriate
District Office

☐ AMENDED REPORT

WELL LOCATION AND ACREAGE DEDICATION PLAT

API Number 30-025-45659	Pool Code 96340	Pool Name FARVIEW MILLS 2ND BONE SPRING, SAND
Property Code 325019	Property Name PITCHBLEND FED 24-25	Well Number 451H
OGRID No. 162928	Operator Name ENERGEN RESOURCES CORPORATION	Elevation 3351'

Surface Location

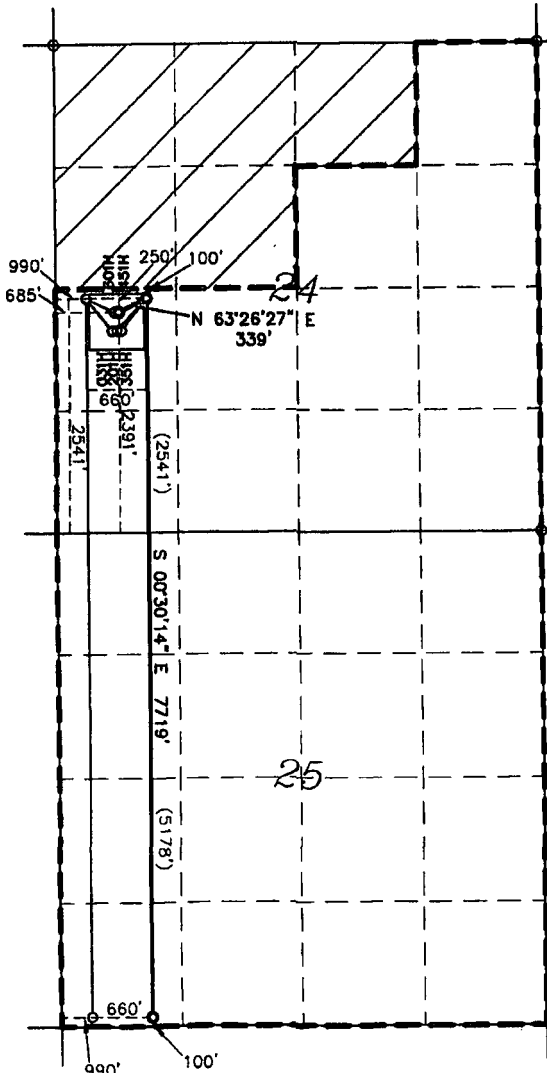
UL or lot No.	Section	Township	Range	Lot Idn	Feet from the	North/South line	Feet from the	East/West line	County
L	24	25-S	34-E	L	2391	SOUTH	685	WEST	LEA

Bottom Hole Location If Different From Surface

UL or lot No.	Section	Township	Range	Lot Idn	Feet from the	North/South line	Feet from the	East/West line	County
M	25	25-S	34-E	M	100	SOUTH	990	WEST	LEA

Dedicated Acres	Joint or Infill	Consolidation Code	Order No.
240			

NO ALLOWABLE WILL BE ASSIGNED TO THIS COMPLETION UNTIL ALL INTERESTS HAVE BEEN CONSOLIDATED
OR A NON-STANDARD UNIT HAS BEEN APPROVED BY THE DIVISION



SHL: 2391' FSL & 685' FWL
NAD 27
N: 406783.16
E: 779828.55
LAT: 32.1152631
LON: 103.4299968
NAD 83
N: 406841.09
E: 821015.23
LAT: 32.1152631
LON: 103.4299968

1ST T/P: 2541' FSL & 990' FWL
NAD 27
N: 406934.91
E: 780132.16
LAT: 32.1156732
LON: 103.4290122
NAD 83
N: 406992.85
E: 821318.83
LAT: 32.1156732
LON: 103.4290122

NOTES:
1. COORDINATES AND BEARINGS ARE BASED ON
LAMBERT CONICAL PROJECTION OF THE STATE
PLANE COORDINATE SYSTEM NAD 83, CORRS 96,
NEW MEXICO EAST ZONE WITH A CONVERGENCE
ANGLE OF 0.53778259 AND DISTANCES ARE OF
GRID VALUE WITH A CENTRAL COMBINED SCALE
FACTOR OF 0.99985905. THE POSITIONAL
TOLERANCE OF THIS SURVEY EXCEEDS THE
REQUIREMENTS FOR A CONSTRUCTION SURVEY.
2. SCALE 1" = 2000'

LAST T/P & BHL: 100' FSL & 990' FWL
NAD 27
N: 399216.60
E: 780199.68
LAT: 32.0944564
LON: 103.4290021
NAD 83
N: 399274.34
E: 821366.72
LAT: 32.0944564
LON: 103.4290021

OPERATOR CERTIFICATION

I hereby certify that the information contained
herein is true and complete to the best of my
knowledge and belief, and that this
organization either owns a working interest or
unleased mineral interest in the land including
the proposed bottom hole location or has a
right to drill this well at this location
pursuant to a contract with an owner of such
a mineral or working interest, or to a
voluntary pooling agreement or compulsory
pooling order heretofore entered by the division.

Signature Date
Brenda F. Rathjen 8/28/18
Printed Name
August 28, 2018
Date

SURVEYOR CERTIFICATION

I hereby certify that the well location shown
on this plat was plotted from field notes of
actual surveys made by me or under my
supervision and that the same is true and
correct to the best of my knowledge.

REGISTERED PROFESSIONAL SURVEYOR
LAND AND STATE OF NEW MEXICO
DECEMBER 8, 2017
Date Surveyed 8/28/18
Signature & Seal of
Professional Surveyor
WILSON D. WATSON JR.
Signature Date JULY 12, 2018
Certificate No. WILSON D. WATSON JR.
P.L.S. #3959
WATSON PROFESSIONAL GROUP INC