

DISTRICT I  
1825 N. French Dr., Hobbs, NM 88240

DISTRICT II  
811 South First, Artesia, NM 88210

DISTRICT III  
1000 Rio Brazos Rd., Artec, NM 87410

DISTRICT IV  
2040 South Pacheco, Santa Fe, NM 87505

State of New Mexico  
Energy, Minerals and Natural Resources Department

Form C-102  
Revised August 1, 2011

OIL CONSERVATION DIVISION

1220 South St. Francis Dr.  
Santa Fe, New Mexico 87505

HOBBS OGD

FEB 28 2019

RECEIVED

Submit one copy to Appropriate  
District Office

☐ AMENDED REPORT

WELL LOCATION AND ACREAGE DEDICATION PLAT

API Number <i>30025-49648</i>	Pool Code <i>96340</i>	Pool Name <i>FRANKLIN MILLS BS</i> 2ND BONE SPRING SAND
Property Code <i>325021</i>	Property Name PITCHBLEND FED 19-30	Well Number 358H
OGRID No. 162928	Operator Name ENERGEN RESOURCES CORPORATION	Elevation 3330'

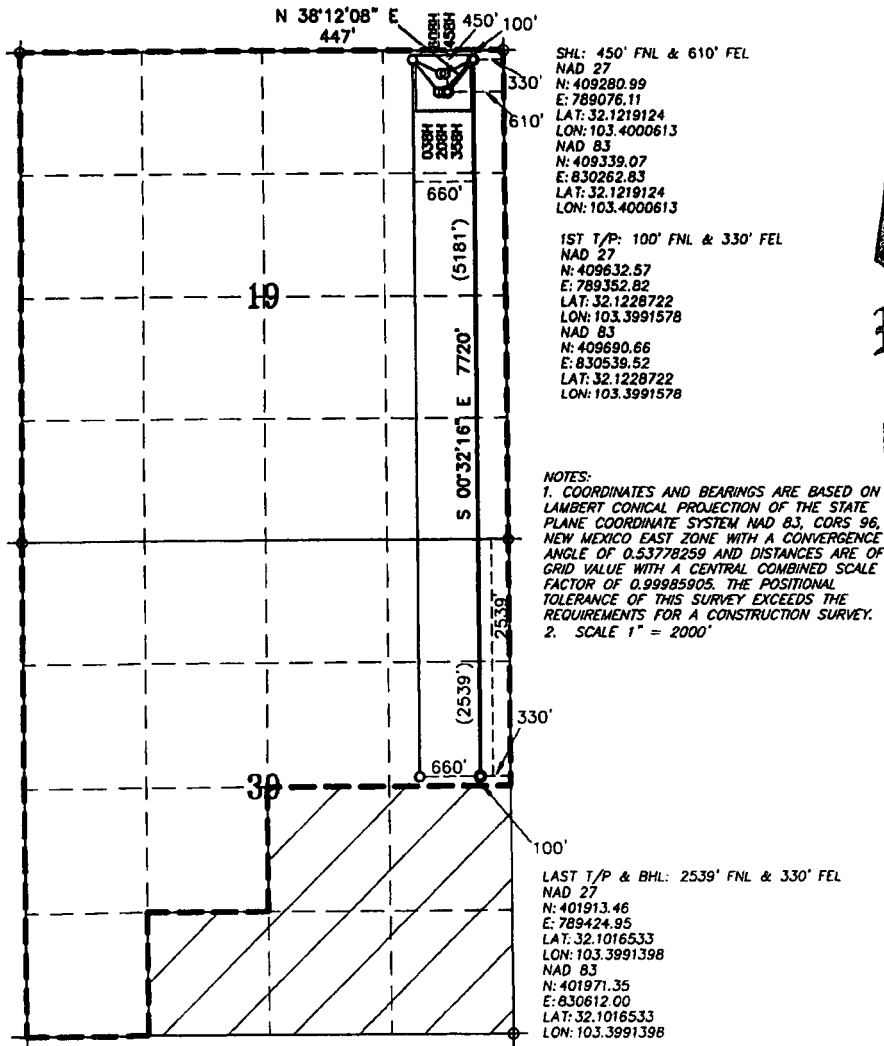
Surface Location

UL or lot No.	Section	Township	Range	Lot Idn	Feet from the	North/South line	Feet from the	East/West line	County
A	19	25-S	35-E	A	450	NORTH	610	EAST	LEA

Bottom Hole Location If Different From Surface

UL or lot No.	Section	Township	Range	Lot Idn	Feet from the	North/South line	Feet from the	East/West line	County
H	30	25-S	35-E	H	2539	NORTH	330	EAST	LEA
Dedicated Acres 240	Joint or Infill	Consolidation Code	Order No.						

NO ALLOWABLE WILL BE ASSIGNED TO THIS COMPLETION UNTIL ALL INTERESTS HAVE BEEN CONSOLIDATED  
OR A NON-STANDARD UNIT HAS BEEN APPROVED BY THE DIVISION



OPERATOR CERTIFICATION

I hereby certify that the information contained herein is true and complete to the best of my knowledge and belief, and that this organization either owns a working interest or unleased mineral interest in the land including the proposed bottom hole location or has a right to drill this well at this location pursuant to a contract with an owner of such a mineral or working interest, or to a voluntary pooling agreement or compulsory pooling order heretofore entered by the division.

*Brenda Rathjen* 8/28/18  
Signature Date  
Brenda F. Rathjen  
Printed Name  
August 28, 2018  
Date

SURVEYOR CERTIFICATION

I hereby certify that the well location shown on this plat was plotted from field notes of actual surveys made by me or under my supervision, and that the information is true and correct to the best of my knowledge and belief.

REGISTERED PROFESSIONAL ENGINEER  
LAND SURVEYOR  
STATE OF NEW MEXICO  
WILSON D. WATSON JR.  
DECEMBER 9, 2017  
Date Surveyed  
No. 3959  
Signature & Seal of Professional Surveyor  
Signature Date JULY 12, 2018  
Certificate No. WILSON D. WATSON JR.  
P.L.S. #3959  
WATSON PROFESSIONAL GROUP INC