

F/F

DISTRICT I  
1626 N. French Dr., Hobbs, NM 88240

DISTRICT II  
811 South First, Artesia, NM 88210

DISTRICT III  
1000 Rio Brazos Rd., Artesia, NM 87410

DISTRICT IV  
2040 South Pacheco, Santa Fe, NM 87505

State of New Mexico  
Energy, Minerals and Natural Resources Department

Form C-102  
Revised August 1, 2011  
Submit one copy to Appropriate  
District Office

OIL CONSERVATION DIVISION  
1820 South St. Francis Dr.  
Santa Fe, New Mexico 87505

HOBBES OCD  
FEB 28 2015  
RECEIVED

☐ AMENDED REPORT

WELL LOCATION AND ACREAGE DEDICATION PLAT

API Number <b>70-029-45656</b>	Pool Code <b>96340</b>	Pool Name <b>FAIRVIEW MISC; BS</b> <del>1ST BOND SPRING SAND</del>
Property Code <b>725021</b>	Property Name <b>PITCHBLINDE FED 19-30</b>	Well Number <b>208H</b>
OCRD No. <b>162928</b>	Operator Name <b>ENERGEN RESOURCES CORPORATION</b>	Elevation <b>3330'</b>

Surface Location

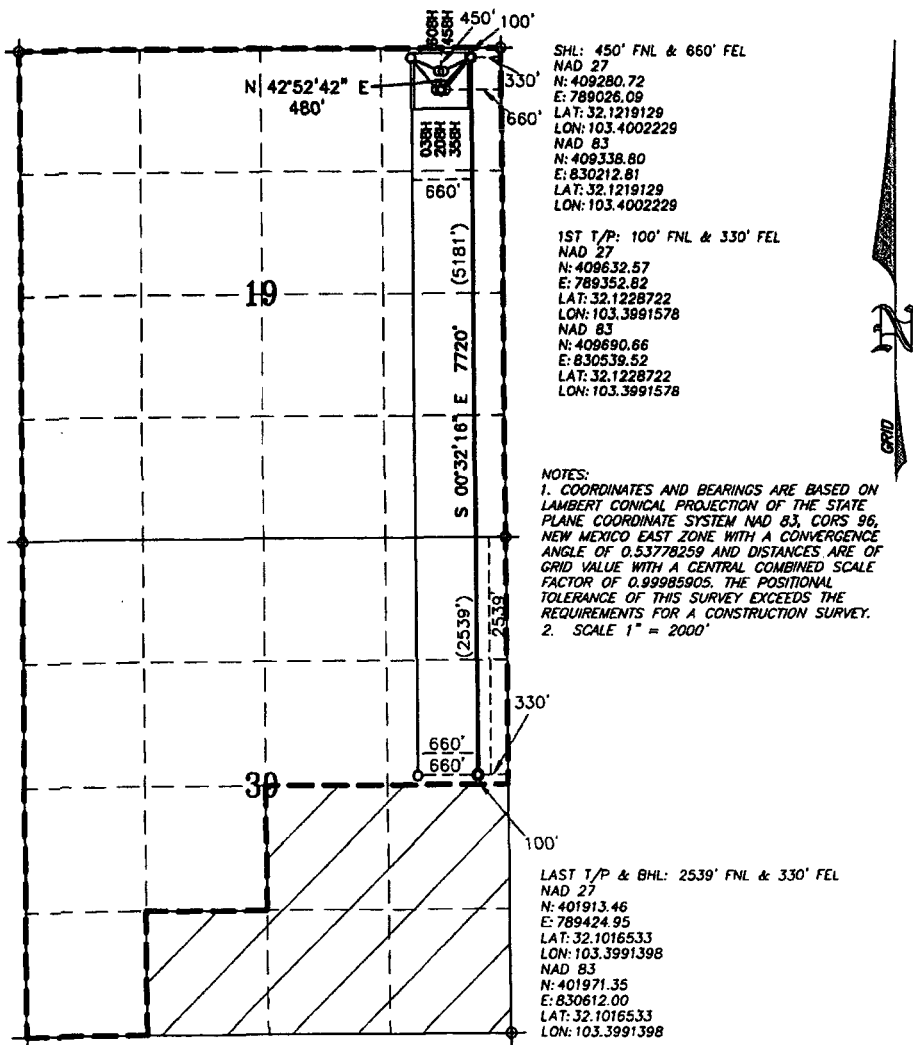
UL or lot No.	Section	Township	Range	Lot Idn	Feet from the	North/South line	Feet from the	East/West line	County
A	19	25-S	35-E	A	450	NORTH	660	EAST	LEA

Bottom Hole Location If Different From Surface

UL or lot No.	Section	Township	Range	Lot Idn	Feet from the	North/South line	Feet from the	East/West line	County
H	30	25-S	35-E	H	2539	NORTH	330	EAST	LEA

Dedicated Acres	Joint or Infill	Consolidation Code	Order No.
240			

NO ALLOWABLE WILL BE ASSIGNED TO THIS COMPLETION UNTIL ALL INTERESTS HAVE BEEN CONSOLIDATED  
OR A NON-STANDARD UNIT HAS BEEN APPROVED BY THE DIVISION



OPERATOR CERTIFICATION

I hereby certify that the information contained  
herethin is true and complete to the best of my  
knowledge and belief, and that this  
organization either owns a working interest or  
unleased mineral interest in the land including  
the proposed bottom hole location or has a  
right to drill this well at this location  
pursuant to a contract with an owner of such  
a mineral or working interest, or to a  
voluntary pooling agreement or compulsory  
pooling order heretofore entered by the division.

*Brenda Rathjen* 8/28/18  
Signature Date  
Brenda F. Rathjen  
Printed Name  
August 28, 2018  
Date

SURVEYOR CERTIFICATION

I hereby certify that the well location shown  
on this plat was plotted from field notes of  
actual surveys made by me or under my  
supervision, and that the same is true and  
correct to the best of my knowledge and belief.

DECEMBER 2017  
Date Surveyed  
Signature & Seal of  
Professional Surveyor  
WILSON D. WATSON JR.  
Signature Date JULY 12, 2018  
Certificate No. WILSON D. WATSON JR.  
P.L.S. #3959  
WATSON PROFESSIONAL GROUP INC