

DISTRICT I
1625 N. French Dr., Hobbs, NM 88240

DISTRICT II
811 South First, Artesia, NM 88210

DISTRICT III
1000 Rio Brazos Rd., Artesia, NM 87410

DISTRICT IV
2040 South Pacheco, Santa Fe, NM 87505

State of New Mexico
Energy, Minerals and Natural Resources Department

Form C-102
Revised August 1, 2011

OIL CONSERVATION DIVISION

1220 South St. Francis Dr.
Santa Fe, New Mexico 87505

Submit one copy to Appropriate
District Office

☐ AMENDED REPORT

WELL LOCATION AND ACREAGE DEDICATION PLAT

API Number 30-024-45653	Pool Code 97779	Pool Name DOGIE DRAW LWR BRUSHY CANYON DELAWARE
Property Code 3032502	Property Name PITCHBLEND FED 19-30	Well Number 038H
OGRID No. 162928	Operator Name ENERGEN RESOURCES CORPORATION	Elevation 3329'

Surface Location

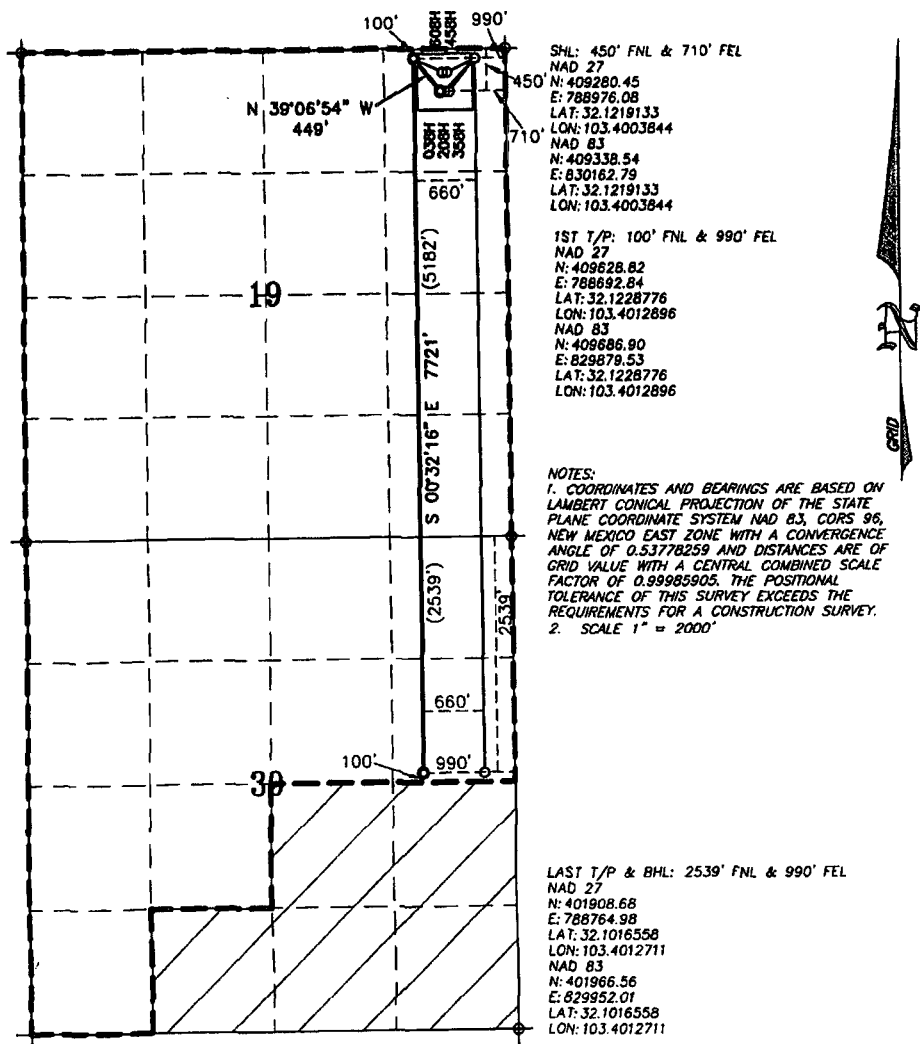
UL or lot No.	Section	Township	Range	Lot Idn	Feet from the	North/South line	Feet from the	East/West line	County
A	19	25-S	35-E	A	450	NORTH	710	EAST	LEA

Bottom Hole Location If Different From Surface

UL or lot No.	Section	Township	Range	Lot Idn	Feet from the	North/South line	Feet from the	East/West line	County
H	30	25-S	35-E	H	2539	NORTH	990	EAST	LEA

Dedicated Acres	Joint or Infill	Consolidation Code	Order No.
240			

NO ALLOWABLE WILL BE ASSIGNED TO THIS COMPLETION UNTIL ALL INTERESTS HAVE BEEN CONSOLIDATED
OR A NON-STANDARD UNIT HAS BEEN APPROVED BY THE DIVISION



OPERATOR CERTIFICATION

I hereby certify that the information contained herein is true and complete to the best of my knowledge and belief, and that this organization either owns a working interest or unleased mineral interest in the land including the proposed bottom hole location or has a right to drill this well at this location pursuant to a contract with an owner of such a mineral or working interest, or to a voluntary pooling agreement or compulsory pooling order heretofore entered by the division.

Brenda F. Rathjen 8/28/18
Signature Date
Brenda F. Rathjen
Printed Name
August 28, 2018
Date

SURVEYOR CERTIFICATION

I hereby certify that the well location shown on this plat was plotted from field notes of actual surveys made by me or under my supervision, and that the same is true and correct to the best of my knowledge.

DECEMBER 12, 2012
Date Surveyed
Signature & Seal of Professional Surveyor
No. 3959
WILSON D. WATSON JR.
Signature Date JULY 12, 2018
Certificate No. WILSON D. WATSON JR.
P.L.S. #3959
WON17-1320-00, FILE 1: PROJECTS\WILSON\17245\1320
WATSON PROFESSIONAL GROUP INC