

DISTRICT I  
1525 N. French Dr., Hobbs, NM 88240

DISTRICT II  
811 South First, Artesia, NM 88210

DISTRICT III  
1000 Rio Brazos Rd., Artesia, NM 87410

DISTRICT IV  
2040 South Pacheco, Santa Fe, NM 87505

State of New Mexico  
Energy, Minerals and Natural Resources Department

Form C-102  
Revised August 1, 2011

OIL CONSERVATION DIVISION  
1220 South St. Francis Dr.  
Santa Fe, New Mexico 87505

Submit one copy to Appropriate  
District Office

☐ AMENDED REPORT

WELL LOCATION AND ACREAGE DEDICATION PLAT

API Number <b>70-025 -45650</b>	Pool Code <b>97779</b>	Pool Name <b>DOBIE DRAIN; LTD. DEUSBY CANYON</b>
Property Code <b>725019</b>	Property Name <b>PITCHBLLENDE FED 24-25</b>	Well Number <b>032H</b>
GRID No. <b>162928</b>	Operator Name <b>ENERGEN RESOURCES CORPORATION</b>	Elevation <b>3348'</b>

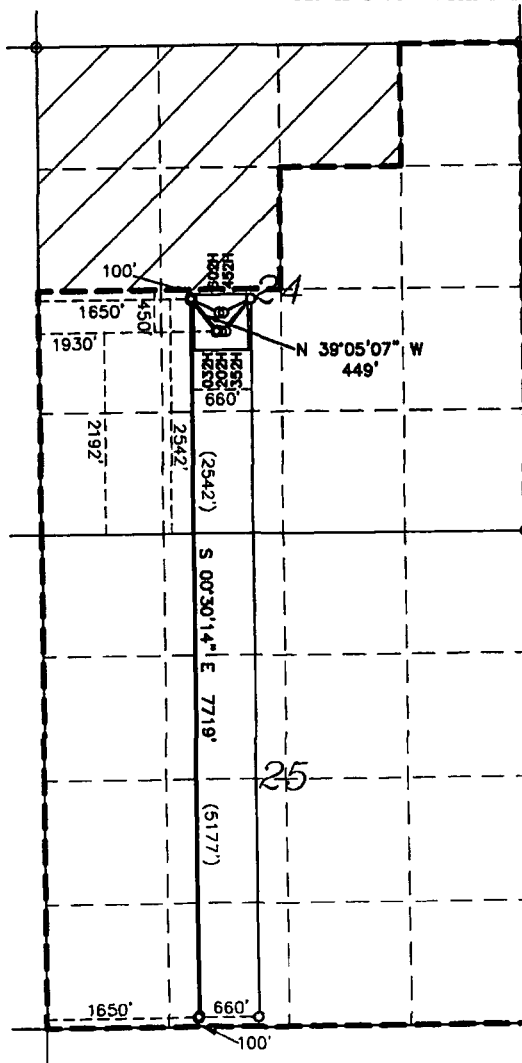
Surface Location

UL or lot No.	Section	Township	Range	Lot Idn	Feet from the	North/South line	Feet from the	East/West line	County
K	24	25-S	34-E	K	2192	SOUTH	1930	WEST	LEA

Bottom Hole Location If Different From Surface

UL or lot No.	Section	Township	Range	Lot Idn	Feet from the	North/South line	Feet from the	East/West line	County
N	25	25-S	34-E	N	100	SOUTH	1650	WEST	LEA
Dedicated Acres <b>240</b>	Joint or Infill	Consolidation Code	Order No.						

NO ALLOWABLE WILL BE ASSIGNED TO THIS COMPLETION UNTIL ALL INTERESTS HAVE BEEN CONSOLIDATED  
OR A NON-STANDARD UNIT HAS BEEN APPROVED BY THE DIVISION



SHL: 2192' FSL & 1930' FWL  
NAD 27  
N: 406590.37  
E: 781075.08  
LAT: 32.1147044  
LON: 103.4259763  
NAD 83  
N: 406648.30  
E: 822261.78  
LAT: 32.1147044  
LON: 103.4259763

1ST T/P: 2542' FSL & 1650' FWL  
NAD 27  
N: 406938.73  
E: 780792.13  
LAT: 32.1156685  
LON: 103.4268806  
NAD 83  
N: 406996.67  
E: 821978.82  
LAT: 32.1156685  
LON: 103.4268806

NOTES:  
1. COORDINATES AND BEARINGS ARE BASED ON  
LAMBERT CONICAL PROJECTION OF THE STATE  
PLANE COORDINATE SYSTEM NAD 83, COR 96,  
NEW MEXICO EAST ZONE WITH A CONVERGENCE  
ANGLE OF 0.53778259 AND DISTANCES ARE OF  
GRID VALUE WITH A CENTRAL COMBINED SCALE  
FACTOR OF 0.99985905. THE POSITIONAL  
TOLERANCE OF THIS SURVEY EXCEEDS THE  
REQUIREMENTS FOR A CONSTRUCTION SURVEY.  
2. SCALE 1" = 2000'

LAST T/P & BHL: 100' FSL & 1650' FWL  
NAD 27  
N: 399220.21  
E: 780859.67  
LAT: 32.0944511  
LON: 103.4268710  
NAD 83  
N: 399277.95  
E: 822046.71  
LAT: 32.0944511  
LON: 103.4268710

OPERATOR CERTIFICATION

I hereby certify that the information contained  
herein is true and complete to the best of my  
knowledge and belief, and that this  
organization either owns a working interest or  
unleased mineral interest in the land including  
the proposed bottom hole location or has a  
right to drill this well at this location  
pursuant to a contract with an owner of such  
a mineral or working interest, or to a  
voluntary pooling agreement or compulsory  
pooling order heretofore entered by the division.

*Brenda F. Rathjen*

8/28/18

Signature Date

Brenda F. Rathjen

Printed Name  
August 28, 2018

Date

SURVEYOR CERTIFICATION

I hereby certify that the well location shown  
on this plat was plotted from field notes of  
actual surveys made by me or under my  
supervision, and that the same is true and  
correct to the best of my belief.

WILSON D. WATSON JR.  
REGISTERED PROFESSIONAL SURVEYOR  
STATE OF NEW MEXICO  
No. 3959  
August 28, 2018

Certificate No. WILSON D. WATSON JR.  
P.L.S. #3959  
W0117-1290-00, FILE: T.PROJECTS\NM\LEA\7245 R132  
WATSON PROFESSIONAL GROUP INC