

UNITED STATES
DEPARTMENT OF THE INTERIOR
BUREAU OF LAND MANAGEMENT
APPLICATION FOR PERMIT TO DRILL OR REENTER

1a. Type of work: <input checked="" type="checkbox"/> DRILL <input type="checkbox"/> REENTER		5. Lease Serial No. NMNM127446
1b. Type of Well: <input checked="" type="checkbox"/> Oil Well <input type="checkbox"/> Gas Well <input type="checkbox"/> Other		6. If Indian, Allottee or Tribe Name
1c. Type of Completion: <input type="checkbox"/> Hydraulic Fracturing <input checked="" type="checkbox"/> Single Zone <input type="checkbox"/> Multiple Zone		7. If Unit or CA Agreement, Name and No.
2. Name of Operator CENTENNIAL RESOURCE PRODUCTION LLC (372165)		8. Lease Name and Well No. DONKEY KONG 1-FED COM 302H (325119)
3a. Address 1001 17th Street, Suite 1800 Denver CO 80202	3b. Phone No. (include area code) (720)499-1400	9. API-Well No. 30-025-45676 (77293)
4. Location of Well (Report location clearly and in accordance with any State requirements. *) At surface NWSE / 2240 FSL / 1386 FEL / LAT 32.332538 / LONG -103.419704 At proposed prod. zone NENE / 100 FNL / 1254 FEL / LAT 32.355142 / LONG -103.419238		10. Field and Pool, or Exploratory OJO, CHISO, BONE SPRING SOUTH / O.
11. Sec., T, R, M. or Blk. and Survey or Area SEC 17 / T23S / R34E / NMP		
14. Distance in miles and direction from nearest town or post office* 24.3 miles		12. County or Parish LEA
13. State NM		
15. Distance from proposed* location to nearest property or lease line, ft. (Also to nearest drig. unit line, if any) 1356 feet	16. No of acres in lease 320.44	17. Spacing Unit dedicated to this well 240.03
18. Distance from proposed location* to nearest well, drilling, completed, applied for, on this lease, ft. 30 feet	19. Proposed Depth 9750 feet / 17264 feet	20. BLM/BIA Bond No. in file FED: NMB001471
21. Elevations (Show whether DF, KDB, RT, GL, etc.) 3365 feet	22. Approximate date work will start* 10/14/2019	23. Estimated duration 25 days
24. Attachments		

The following, completed in accordance with the requirements of Onshore Oil and Gas Order No. 1, and the Hydraulic Fracturing rule per 43 CFR 3162.3-3 (as applicable)

- | | |
|--|---|
| 1. Well plat certified by a registered surveyor. | 4. Bond to cover the operations unless covered by an existing bond on file (see Item 20 above). |
| 2. A Drilling Plan. | 5. Operator certification. |
| 3. A Surface Use Plan (if the location is on National Forest System Lands, the SUPO must be filed with the appropriate Forest Service Office). | 6. Such other site specific information and/or plans as may be requested by the BLM. |

25. Signature (Electronic Submission)	Name (Printed/Typed) Kania Castillo / Ph: (720)499-1537	Date 10/24/2018
Title Sr. Regulatory Analyst		
Approved by (Signature) (Electronic Submission)	Name (Printed/Typed) Cody Layton / Ph: (575)234-5959	Date 02/28/2019
Title Assistant Field Manager Lands & Minerals CARLSBAD		

Application approval does not warrant or certify that the applicant holds legal or equitable title to those rights in the subject lease which would entitle the applicant to conduct operations thereon.

Conditions of approval, if any, are attached.

Title 18 U.S.C. Section 1001 and Title 43 U.S.C. Section 1212, make it a crime for any person knowingly and willfully to make to any department or agency of the United States any false, fictitious or fraudulent statements or representations as to any matter within its jurisdiction.

APPROVED WITH CONDITIONS
Approval Date: 02/28/2019

K2
02/10/2019

REQUIRE NGL

*(Instructions on page 2)

PECOS DISTRICT DRILLING OPERATIONS CONDITIONS OF APPROVAL

OPERATOR'S NAME:	CENTENNIAL RESOURCE PRODUCTION LLC
LEASE NO.:	NMNM127446
WELL NAME & NO.:	DONKEY KONG 1 FED COM 302H
SURFACE HOLE FOOTAGE:	2240'/S & 1386'/E
BOTTOM HOLE FOOTAGE	100'/N & 1254'/E
LOCATION:	SECTION 1, T23S, R34E, NMPM
COUNTY:	LEA

Potash	<input checked="" type="radio"/> None	<input type="radio"/> Secretary	<input type="radio"/> R-111-P
Cave/Karst Potential	<input checked="" type="radio"/> Low	<input type="radio"/> Medium	<input type="radio"/> High
Variance	<input type="radio"/> None	<input checked="" type="radio"/> Flex Hose	<input type="radio"/> Other
Wellhead	<input checked="" type="radio"/> Conventional	<input type="radio"/> Multibowl	
Other	<input type="checkbox"/> 4 String Area	<input checked="" type="checkbox"/> Capitan Reef	<input type="checkbox"/> WIPP

A. Hydrogen Sulfide

1. Hydrogen Sulfide (H₂S) monitors shall be installed prior to drilling out the surface shoe. If H₂S is detected in concentrations greater than 100 ppm, the Hydrogen Sulfide area shall meet Onshore Order 6 requirements, which includes equipment and personnel/public protection items. If Hydrogen Sulfide is encountered, provide measured values and formations to the BLM.

B. CASING

1. The 13 3/8" surface casing shall be set at approximately **1850'** (a minimum of 25' into the Rustler Anhydrite and above the salt) and cemented to surface.
 - a. **If cement does not circulate to surface**, the appropriate BLM office shall be notified and a temperature survey utilizing an electronic type temperature survey with surface log readout will be used or a cement bond log shall be run to verify the top of the cement. Temperature survey will be run a minimum of **6 hours** after pumping cement, ideally between 8-10 hours after completing the cement job.
 - b. WOC time for a primary cement job will be a minimum of **8 hours** or **500 psi** compressive strength, whichever is greater. This is to include the lead cement.
 - c. If cement falls back, remedial cementing will be done prior to drilling out that string.
 - d. WOC time for a remedial job will be a minimum of 4 hours after bringing cement to surface or 500 psi compressive strength, whichever is greater.

Intermediate casing must be kept at least 1/3 fluid filled to meet BLM minimum Collapse Requirements.

2. The minimum required fill of cement behind the **9 5/8"** intermediate casing is:
 - Cement to surface. If cement does not circulate see B.1.a, c-d above.
 - ❖ **Special Capitan Reef requirements.** If lost circulation (50% or greater) occurs below the Base of the Salt, the operator shall do the following:
 - Switch to fresh water mud to protect the Capitan Reef and use fresh water mud until setting the intermediate casing. The appropriate BLM office is to be notified for a PET to witness the switch to fresh water.
 - Daily drilling reports from the Base of the Salt to the setting of the intermediate casing are to be submitted to the BLM CFO engineering staff via e-mail by 0800 hours each morning. Any lost circulation encountered is to be recorded on these drilling reports. The daily drilling report should show mud volume per shift/tour. Failure to submit these reports will result in an Incidence of Non-Compliance being issued for failure to comply with the Conditions of Approval. If not already planned, the operator shall run a caliper survey for the intermediate well bore and submit to the appropriate BLM office.
3. The minimum required fill of cement behind the **5-1/2"** production casing is:
 - Cement should tie-back at least **50 feet above Capitan Reef**. Operator shall provide method of verification.

C. PRESSURE CONTROL

1. Variance approved to use flex line from BOP to choke manifold. Manufacturer's specification to be readily available. No external damage to flex line. Flex line to be installed as straight as possible (no hard bends).
2. Minimum working pressure of the blowout preventer (BOP) and related equipment (BOPE) required for drilling below the surface casing shoe shall be **5000 (5M) psi**.

D. SPECIAL REQUIREMENT (S)

Communitization Agreement

- The operator will submit a Communitization Agreement to the Carlsbad Field Office, 620 E Greene St. Carlsbad, New Mexico 88220, at least 90 days before the anticipated date of first production from a well subject to a spacing order issued by

the New Mexico Oil Conservation Division. The Communitization Agreement will include the signatures of all working interest owners in all Federal and Indian leases subject to the Communitization Agreement (i.e., operating rights owners and lessees of record), or certification that the operator has obtained the written signatures of all such owners and will make those signatures available to the BLM immediately upon request.

- If the operator does not comply with this condition of approval, the BLM may take enforcement actions that include, but are not limited to, those specified in 43 CFR 3163.1.
- In addition, the well sign shall include the surface and bottom hole lease numbers. When the Communitization Agreement number is known, it shall also be on the sign.

JJP02262019

GENERAL REQUIREMENTS

1. The BLM is to be notified in advance for a representative to witness:
 - a. Spudding well (minimum of 24 hours)
 - b. Setting and/or Cementing of all casing strings (minimum of 4 hours)
 - c. BOPE tests (minimum of 4 hours)

☒ Chaves and Roosevelt Counties
Call the Roswell Field Office, 2909 West Second St., Roswell NM 88201.
During office hours call (575) 627-0272.
After office hours call (575)

☒ Eddy County
Call the Carlsbad Field Office, 620 East Greene St., Carlsbad, NM 88220,
(575) 361-2822

☒ Lea County
Call the Hobbs Field Station, 414 West Taylor, Hobbs NM 88240, (575)
393-3612
2. Unless the production casing has been run and cemented or the well has been properly plugged, the drilling rig shall not be removed from over the hole without prior approval.
 - a. In the event the operator has proposed to drill multiple wells utilizing a skid/walking rig. Operator shall secure the wellbore on the current well, after installing and testing the wellhead, by installing a blind flange of like pressure rating to the wellhead and a pressure gauge that can be monitored while drilling is performed on the other well(s).
 - b. When the operator proposes to set surface casing with Spudder Rig

- Notify the BLM when moving in and removing the Spudder Rig.
 - Notify the BLM when moving in the 2nd Rig. Rig to be moved in within 90 days of notification that Spudder Rig has left the location.
 - BOP/BOPE test to be conducted per Onshore Oil and Gas Order No. 2 as soon as 2nd Rig is rigged up on well.
3. Floor controls are required for 3M or Greater systems. These controls will be on the rig floor, unobstructed, readily accessible to the driller and will be operational at all times during drilling and/or completion activities. Rig floor is defined as the area immediately around the rotary table; the area immediately above the substructure on which the draw works are located, this does not include the dog house or stairway area.
 4. The record of the drilling rate along with the GR/N well log (one log per well pad is acceptable) run from TD to surface (horizontal well – vertical portion of hole) shall be submitted to the BLM office as well as all other logs run on the borehole 30 days from completion. If available, a digital copy of the logs is to be submitted in addition to the paper copies. The Rustler top and top and bottom of Salt are to be recorded on the Completion Report.

A. CASING

1. Changes to the approved APD casing program need prior approval if the items substituted are of lesser grade or different casing size or are Non-API. The Operator can exchange the components of the proposal with that of superior strength (i.e. changing from J-55 to N-80, or from 36# to 40#). Changes to the approved cement program need prior approval if the altered cement plan has less volume or strength or if the changes are substantial (i.e. Multistage tool, ECP, etc.). The initial wellhead installed on the well will remain on the well with spools used as needed.
2. Wait on cement (WOC) for Potash Areas: After cementing but before commencing any tests, the casing string shall stand cemented under pressure until both of the following conditions have been met: 1) cement reaches a minimum compressive strength of 500 psi for all cement blends, 2) until cement has been in place at least 24 hours. WOC time will be recorded in the driller's log. The casing integrity test can be done (prior to the cement setting up) immediately after bumping the plug.
3. Wait on cement (WOC) for Water Basin: After cementing but before commencing any tests, the casing string shall stand cemented under pressure until both of the following conditions have been met: 1) cement reaches a minimum compressive strength of 500 psi at the shoe, 2) until cement has been in place at least 8 hours. WOC time will be recorded in the driller's log. See individual casing strings for details regarding lead cement slurry requirements. The casing integrity test can be done (prior to the cement setting up) immediately after bumping the plug.

4. Provide compressive strengths including hours to reach required 500 pounds compressive strength prior to cementing each casing string. Have well specific cement details onsite prior to pumping the cement for each casing string.
5. No pea gravel permitted for remedial or fall back remedial without prior authorization from the BLM engineer.
6. On that portion of any well approved for a 5M BOPE system or greater, a pressure integrity test of each casing shoe shall be performed. Formation at the shoe shall be tested to a minimum of the mud weight equivalent anticipated to control the formation pressure to the next casing depth or at total depth of the well. This test shall be performed before drilling more than 20 feet of new hole.
7. If hardband drill pipe is rotated inside casing, returns will be monitored for metal. If metal is found in samples, drill pipe will be pulled and rubber protectors which have a larger diameter than the tool joints of the drill pipe will be installed prior to continuing drilling operations.
8. Whenever a casing string is cemented in the R-111-P potash area, the NMOCD requirements shall be followed.

B. PRESSURE CONTROL

1. All blowout preventer (BOP) and related equipment (BOPE) shall comply with well control requirements as described in Onshore Oil and Gas Order No. 2 and API RP 53 Sec. 17.
2. If a variance is approved for a flexible hose to be installed from the BOP to the choke manifold, the following requirements apply: The flex line must meet the requirements of API 16C. Check condition of flexible line from BOP to choke manifold, replace if exterior is damaged or if line fails test. Line to be as straight as possible with no hard bends and is to be anchored according to Manufacturer's requirements. The flexible hose can be exchanged with a hose of equal size and equal or greater pressure rating. Anchor requirements, specification sheet and hydrostatic pressure test certification matching the hose in service, to be onsite for review. These documents shall be posted in the company man's trailer and on the rig floor.
3. 5M or higher system requires an HCR valve, remote kill line and annular to match. The remote kill line is to be installed prior to testing the system and tested to stack pressure.
4. If the operator has proposed a multi-bowl wellhead assembly in the APD. The following requirements must be met:
 - a. Wellhead shall be installed by manufacturer's representatives, submit documentation with subsequent sundry.

- b. If the welding is performed by a third party, the manufacturer's representative shall monitor the temperature to verify that it does not exceed the maximum temperature of the seal.
 - c. Manufacturer representative shall install the test plug for the initial BOP test.
 - d. If the cement does not circulate and one inch operations would have been possible with a standard wellhead, the well head shall be cut off, cementing operations performed and another wellhead installed.
 - e. Whenever any seal subject to test pressure is broken, all the tests in OOGO2.III.A.2.i must be followed.
5. The appropriate BLM office shall be notified a minimum of 4 hours in advance for a representative to witness the tests.
- a. In a water basin, for all casing strings utilizing slips, these are to be set as soon as the crew and rig are ready and any fallback cement remediation has been done. The casing cut-off and BOP installation can be initiated four hours after installing the slips, which will be approximately six hours after bumping the plug. For those casing strings not using slips, the minimum wait time before cut-off is eight hours after bumping the plug. BOP/BOPE testing can begin after cut-off or once cement reaches 500 psi compressive strength (including lead when specified), whichever is greater. However, if the float does not hold, cut-off cannot be initiated until cement reaches 500 psi compressive strength (including lead when specified).
 - b. In potash areas, for all casing strings utilizing slips, these are to be set as soon as the crew and rig are ready and any fallback cement remediation has been done. For all casing strings, casing cut-off and BOP installation can be initiated at twelve hours after bumping the plug. However, **no tests** shall commence until the cement has had a minimum of 24 hours setup time, except the casing pressure test can be initiated immediately after bumping the plug (only applies to single stage cement jobs).
 - c. The tests shall be done by an independent service company utilizing a test plug. The results of the test shall be reported to the appropriate BLM office.
 - d. The test shall be run on a 5000 psi chart for a 2-3M BOP/BOP, on a 10000 psi chart for a 5M BOP/BOPE and on a 15000 psi chart for a 10M BOP/BOPE. If a linear chart is used, it shall be a one hour chart. A circular chart shall have a maximum 2 hour clock. If a twelve hour or twenty-four hour chart is used, tester shall make a notation that it is run with a two hour clock.
 - e. All tests are required to be recorded on a calibrated test chart. A copy of the BOP/BOPE test chart and a copy of independent service company test will be submitted to the appropriate BLM office.
 - f. The BOP/BOPE test shall include a low pressure test from 250 to 300 psi. The

test will be held for a minimum of 10 minutes. This test shall be performed prior to the test at full stack pressure.

- g. BOP/BOPE must be tested by an independent service company within 500 feet of the top of the Wolfcamp formation if the time between the setting of the intermediate casing and reaching this depth exceeds 20 days. This test does not exclude the test prior to drilling out the casing shoe as per Onshore Order No. 2.

C. DRILLING MUD

Mud system monitoring equipment, with derrick floor indicators and visual and audio alarms, shall be operating before drilling into the Wolfcamp formation, and shall be used until production casing is run and cemented.

D. WASTE MATERIAL AND FLUIDS

1. All waste (i.e. drilling fluids, trash, salts, chemicals, sewage, gray water, etc.) created as a result of drilling operations and completion operations shall be safely contained and disposed of properly at a waste disposal facility. No waste material or fluid shall be disposed of on the well location or surrounding area.
2. Porto-johns and trash containers will be on-location during fracturing operations or any other crew-intensive operations.



U.S. Department of the Interior
BUREAU OF LAND MANAGEMENT

Operator Certification Data Report

03/05/2019

Operator Certification

I hereby certify that I, or someone under my direct supervision, have inspected the drill site and access route proposed herein; that I am familiar with the conditions which currently exist; that I have full knowledge of state and Federal laws applicable to this operation; that the statements made in this APD package are, to the best of my knowledge, true and correct; and that the work associated with the operations proposed herein will be performed in conformity with this APD package and the terms and conditions under which it is approved. I also certify that I, or the company I represent, am responsible for the operations conducted under this application. These statements are subject to the provisions of 18 U.S.C. 1001 for the filing of false statements.

NAME: Kanicia Castillo

Signed on: 09/14/2018

Title: Sr. Regulatory Analyst

Street Address: 1001 17th Street, Suite 1800

City: Denver

State: CO

Zip: 80202

Phone: (720)499-1537

Email address: kanicia.castillo@cdevinc.com

Field Representative

Representative Name:

Street Address:

City:

State:

Zip:

Phone:

Email address:



U.S. Department of the Interior
BUREAU OF LAND MANAGEMENT

Application Data Report

03/05/2019

APD ID: 10400034639

Submission Date: 10/24/2018

Operator Name: CENTENNIAL RESOURCE PRODUCTION LLC

Highlighted data
reflects the most
recent changes

Well Name: DONKEY KONG 1 FED COM

Well Number: 302H

[Show Final Text](#)

Well Type: OIL WELL

Well Work Type: Drill

Section 1 - General

APD ID: 10400034639

Tie to previous NOS?

Submission Date: 10/24/2018

BLM Office: CARLSBAD

User: Kanicia Castillo

Title: Sr. Regulatory Analyst

Federal/Indian APD: FED

Is the first lease penetrated for production Federal or Indian? FED

Lease number: NMNM127446

Lease Acres: 320.44

Surface access agreement in place?

Allotted?

Reservation:

Agreement in place? NO

Federal or Indian agreement:

Agreement number:

Agreement name:

Keep application confidential? YES

Permitting Agent? NO

APD Operator: CENTENNIAL RESOURCE PRODUCTION LLC

Operator letter of designation:

Operator Info

Operator Organization Name: CENTENNIAL RESOURCE PRODUCTION LLC

Operator Address: 1001 17th Street, Suite 1800

Zip: 80202

Operator PO Box:

Operator City: Denver

State: CO

Operator Phone: (720)499-1400

Operator Internet Address:

Section 2 - Well Information

Well in Master Development Plan? EXISTING

Mater Development Plan name: Donkey Kong Pad

Well in Master SUPO? NO

Master SUPO name:

Well in Master Drilling Plan? NO

Master Drilling Plan name:

Well Name: DONKEY KONG 1 FED COM

Well Number: 302H

Well API Number:

Field/Pool or Exploratory? Field and Pool

Field Name: OJO CHISO, BONE SPRING SOUTH

Pool Name: OJO CHISO, BONESPRING,S

Is the proposed well in an area containing other mineral resources? USEABLE WATER

Operator Name: CENTENNIAL RESOURCE PRODUCTION LLC

Well Name: DONKEY KONG 1 FED COM

Well Number: 302H

Describe other minerals:

Is the proposed well in a Helium production area? N

Use Existing Well Pad? YES

New surface disturbance? N

Type of Well Pad: MULTIPLE WELL

Multiple Well Pad Name:

Number: 601H

Well Class: HORIZONTAL

DONKEY KONG

Number of Legs: 1

Well Work Type: Drill

Well Type: OIL WELL

Describe Well Type:

Well sub-Type: INFILL

Describe sub-type:

Distance to town: 24.3 Miles

Distance to nearest well: 30 FT

Distance to lease line: 1356 FT

Reservoir well spacing assigned acres Measurement: 240.03 Acres

Well plat: DONKEY_KONG_1_FED_COM_302H_Lease_Plat_20180927133221.pdf

DONKEY_KONG_1_FED_COM_302H_Plat_20180927133221.pdf

Well work start Date: 10/14/2019

Duration: 25 DAYS

Section 3 - Well Location Table

Survey Type: RECTANGULAR

Describe Survey Type:

Datum: NAD83

Vertical Datum: NAVD88

Survey number: 23782

	NS-Foot	NS Indicator	EW-Foot	EW Indicator	Twsp	Range	Section	Aliquot/Lot/Tract	Latitude	Longitude	County	State	Meridian	Lease Type	Lease Number	Elevation	MD	TVD
SHL Leg #1	224 0	FSL	138 6	FEL	23S	34E	1	Aliquot NWSE	32.33253 8	-103.4197 04	LEA	NEW MEXI CO	NEW MEXI CO	302	STATE	333 5	0	0
KOP Leg #1	224 0	FSL	138 6	FEL	23S	34E	1	Aliquot NWSE	32.33225 33	-103.4197 04	LEA	NEW MEXI CO	NEW MEXI CO	302	STATE	333 2	021 8	917 7
PPP Leg #1	224 0	FSL	138 6	FEL	23S	34E	1	Aliquot NWSE	32.33392 5	-103.4192 73	LEA	NEW MEXI CO	NEW MEXI CO	F	NMNM 127446	633 6	101 13	975 0

Operator Name: CENTENNIAL RESOURCE PRODUCTION LLC

Well Name: DONKEY KONG 1 FED COM

Well Number: 302H

	NS-Foot	NS Indicator	EW-Foot	EW Indicator	Twsp	Range	Section	Aliquot/Lot/Tract	Latitude	Longitude	County	State	Meridian	Lease Type	Lease Number	Elevation	MD	TVD
EXIT Leg #1	100	FNL	125 4	FEL	22S	34E	36	Aliquot NENE	32.35514 2	-103.4192 38	LEA	NEW MEXI CO	NEW MEXI CO	S	STATE	638 5	172 64	975 0
BHL Leg #1	100	FNL	125 4	FEL	22S	34E	36	Aliquot NENE	32.35514 2	-103.4192 38	LEA	NEW MEXI CO	NEW MEXI CO	S	STATE	638 5	172 64	975 0



U.S. Department of the Interior
BUREAU OF LAND MANAGEMENT

Drilling Plan Data Report

03/05/2019

APD ID: 10400034639

Submission Date: 10/24/2018

Operator Name: CENTENNIAL RESOURCE PRODUCTION LLC

Well Name: DONKEY KONG 1 FED COM

Well Number: 302H

Well Type: OIL WELL

Well Work Type: Drill

Highlighted data
reflects the most
recent changes

Show Final Text

Section 1 - Geologic Formations

Formation ID	Formation Name	Elevation	True Vertical Depth	Measured Depth	Lithologies	Mineral Resources	Producing Formation
1	RUSTLER	-1989	1160	1160	SANDSTONE	NONE	No
2	CAPITAN REEF	-6579	4590	4590	OTHER : CARBONATE	USEABLE WATER	No
3	BELL CANYON	-7375	5386	5386	SANDSTONE	NATURAL GAS,OIL	No
4	CHERRY CANYON	-8105	6116	6116	SANDSTONE	NATURAL GAS,OIL	No
5	BRUSHY CANYON	-9383	7394	7394	SANDSTONE	NATURAL GAS,OIL	No
6	BONE SPRING LIME	-10767	8778	8778	OTHER : CARBONATE	NATURAL GAS,OIL	No
7	AVALON SAND	-11208	9219	9219	SHALE	NATURAL GAS,CO2,OIL	No
8	FIRST BONE SPRING SAND	-11783	9794	9794	SANDSTONE	NATURAL GAS,OIL	Yes
9	BONE SPRING 2ND	-11969	9980	9980	SHALE,OTHER : CARBONATE	NATURAL GAS,OIL	No
10	BONE SPRING 3RD	-13168	11179	11179	SANDSTONE	NATURAL GAS,OIL	No

Section 2 - Blowout Prevention

Pressure Rating (PSI): 5M

Rating Depth: 9750

Equipment: The BOP and related equipment will meet or exceed the requirements of a 5M-psi system as set forth in On Shore Order No. 2. See attached BOP Schematic. A. Casinghead: 13 5/8" – 5,000 psi SOW x 13" – 5,000 psi WP Intermediate Spool: 13" – 5,000 psi WP x 11" – 5,000 psi WP Tubinghead: 11" – 5,000 psi WP x 7 1/16" – 15,000 psi WP B. Minimum Specified Pressure Control Equipment • Annular preventer • One Pipe ram, One blind ram • Drilling spool, or blowout preventer with 2 side outlets. Choke side will be a 3-inch minimum diameter, kill line shall be at least 2-inch diameter • 3 inch diameter choke line • 2 – 3 inch choke line valves • 2 inch kill line • 2 chokes with 1 remotely controlled from rig floor (see Figure 2) • 2 – 2 inch kill line valves and a check valve • Upper kelly cock valve with handle available • When the expected pressures approach working pressure of the system, 1 remote kill line tested to stack pressure (which shall run to the outer edge of the substructure and be unobstructed) • Lower kelly cock valve with handle available • Safety valve(s) and subs to fit all drill string connections in use • Inside BOP or float sub available • Pressure gauge on choke manifold • All BOPE connections subjected to well pressure shall be flanged, welded, or clamped • Fill-up line above the uppermost preventer. C. Auxiliary Equipment • Audio and visual mud monitoring equipment shall be placed to detect volume changes indicating loss or gain of circulating fluid volume. (OOS 1, III.C.2) • Gas Buster will be used below intermediate casing setting

Operator Name: CENTENNIAL RESOURCE PRODUCTION LLC

Well Name: DONKEY KONG 1 FED COM

Well Number: 302H

depth. • Upper and lower kelly cocks with handles, safety valve and subs to fit all drill string connections and a pressure gauge installed on choke manifold.

Requesting Variance? YES

Variance request: Centennial Resource Production, LLC hereby requests to use a flex hose on the choke manifold for the Donkey Kong 1 Fed Com 302H well.

Testing Procedure: The BOP test shall be performed before drilling out of the surface casing shoe and will occur at a minimum: a. when initially installed b. whenever any seal subject to test pressure is broken c. following related repairs d. at 30 day intervals e. checked daily as to mechanical operating conditions. The ram type preventer(s) will be tested using a test plug to 250 psi (low) and 5,000 psi (high) (casinghead WP) with a test plug upon its installation onto the 13" surface casing. If a test plug is not used, the ram type preventer(s) shall be tested to 70% of the minimum internal yield pressure of the casing. The annular type preventer(s) shall be tested to 50% of its working pressure. Pressure will be maintained for at least 10 minutes or until provisions of the test are met, whichever is longer. • A Sundry Notice (Form 3160 5), along with a copy of the BOP test report, shall be submitted to the local BLM office within 5 working days following the test. • If the bleed line is connected into the buffer tank (header), all BOP equipment including the buffer tank and associated valves will be rated at the required BOP pressure. • The BLM office will be provided with a minimum of four (4) hours' notice of BOP testing to allow witnessing. The BOP Configuration, choke manifold layout, and accumulator system, will be in compliance with Onshore Order 2 for a 5,000 psi system. A remote accumulator will be used. Pressures, capacities, and specific placement and use of the manual and/or hydraulic controls, accumulator controls, bleed lines, etc., will be identified at the time of the BLM 'witnessed BOP test. Any remote controls will be capable of both opening and closing all preventers and shall be readily accessible

Choke Diagram Attachment:

Choke_Diagram_20180927140644.pdf

BOP Diagram Attachment:

HP650_BOP_Schematic_CoFlex_Choke_5K_2019_1_29_20190131125550.pdf

Section 3 - Casing

Casing ID	String Type	Hole Size	Csg Size	Condition	Standard	Tapered String	Top Set MD	Bottom Set MD	Top Set TVD	Bottom Set TVD	Top Set MSL	Bottom Set MSL	Calculated casing length MD	Grade	Weight	Joint Type	Collapse SF	Burst SF	Joint SF Type	Joint SF	Body SF Type	Body SF
1	CONDUCTOR	26	20.0	NEW	API	N	0	120	0	120	3365	3245	120	H-40	94	OTHER - WELD						
2	SURFACE	17.5	13.375	NEW	API	N	0	1850	0	1850	3365	1515	1850	J-55	54.5	OTHER - BTC	1.24	2.99	DRY	8.46	DRY	8.46
3	INTERMEDIATE	12.25	9.625	NEW	API	N	0	5200	0	5200	3365	-1835	5200	J-55	40	LTC	1.35	1.46	DRY	2.5	DRY	3.03
4	PRODUCTION	8.75	5.5	NEW	API	N	0	9218	0	9177	3365	-5812	9218	P-110	20	OTHER - TMK UP DQX	2.33	2.65	DRY	3.49	DRY	3.49
5	PRODUCTION	8.5	5.5	NEW	API	N	9218	17264	9177	9750	-5812	-6385	8046	P-110	20	OTHER - TMK UP DQX	2.19	2.5	DRY	55.93	DRY	55.93

Operator Name: CENTENNIAL RESOURCE PRODUCTION LLC

Well Name: DONKEY KONG 1 FED COM

Well Number: 302H

Casing Attachments

Casing ID: 1 **String Type:** CONDUCTOR

Inspection Document:

Spec Document:

Tapered String Spec:

Casing Design Assumptions and Worksheet(s):

Casing ID: 2 **String Type:** SURFACE

Inspection Document:

Spec Document:

Tapered String Spec:

Casing Design Assumptions and Worksheet(s):

CASING_ASSUMPTIONS_WORKSHEET_20180906105148.pdf

Casing ID: 3 **String Type:** INTERMEDIATE

Inspection Document:

Spec Document:

Tapered String Spec:

Casing Design Assumptions and Worksheet(s):

CASING_ASSUMPTIONS_WORKSHEET_20180906105200.pdf

Operator Name: CENTENNIAL RESOURCE PRODUCTION LLC

Well Name: DONKEY KONG 1 FED COM

Well Number: 302H

Casing Attachments

Casing ID: 4 **String Type:** PRODUCTION

Inspection Document:

Spec Document:

Tapered String Spec:

Casing Design Assumptions and Worksheet(s):

CASING_ASSUMPTIONS_WORKSHEET_20181024114948.pdf

Casing ID: 5 **String Type:** PRODUCTION

Inspection Document:

Spec Document:

Tapered String Spec:

Casing Design Assumptions and Worksheet(s):

CASING_ASSUMPTIONS_WORKSHEET_20180906105120.pdf

TMK_UP_DQX_5.5_x_20_P110_SPEC_20190131125854.pdf

Section 4 - Cement

String Type	Lead/Tail	Stage Tool Depth	Top MD	Bottom MD	Quantity(sx)	Yield	Density	Cu Ft	Excess%	Cement type	Additives
PRODUCTION	Lead		0	0	0	0	0	0		0	0
CONDUCTOR	Lead		0	120	121	1.49	12.9	181		Grout	Bentonite 4% BWOC, Cellophane #/sx, CaCl2 2% BWOC.

Operator Name: CENTENNIAL RESOURCE PRODUCTION LLC

Well Name: DONKEY KONG 1 FED COM

Well Number: 302H

String Type	Lead/Tail	Stage Tool Depth	Top MD	Bottom MD	Quantity(sx)	Yield	Density	Cu Ft	Excess%	Cement type	Additives
SURFACE	Lead		0	1350	1078	1.74	13.5	1875	100	Class C Premium	Premium Gel Bentonite 4%, C-45 Econolite 0.25%, Phenoseal 0.25#/sk, CaCl 1%, Defoamer C-41P 0.75%
SURFACE	Tail		1350	1850	518	1.34	14.8	695	100	Class C Premium	C-45 Econolite 0.10%, CaCl 1.0%
INTERMEDIATE	Lead		0	4700	1133	3.44	10.7	3909	150	TXI Lightweight	Salt 1.77/sk, C-45 Econolite 2.25%, STE 6.00%, Citric Acid 0.18%, C-19 0.10%, CSA-1000 0.20%, C-530P 0.30%, CTB-15 LCM 7#/sk, Gyp Seal 8#/sk
INTERMEDIATE	Tail		4700	5200	141	1.33	14.8	188	20	Class C Premium	C-45 Econolite 0.10%, Citric acid 0.05%, C503P 0.25%
PRODUCTION	Lead		0	9218	904	3.41	10.6	3032	30	TXI Lightweight	Salt 8.98#/sk, STE 6.00%, Citric acid 0.20%, CSA-1000 0.23%, C47B 0.10%, C-503P 0.30%
PRODUCTION	Tail		9218	17264	1858	1.24	14.2	2304	25	50:25:25 Class H: Poz: CPO18	Citric acid 0.03%, CSA-1000 0.05%, C47B 0.25%, C-503P 0.30%

Section 5 - Circulating Medium

Mud System Type: Closed

Will an air or gas system be Used? NO

Description of the equipment for the circulating system in accordance with Onshore Order #2:

Diagram of the equipment for the circulating system in accordance with Onshore Order #2:

Describe what will be on location to control well or mitigate other conditions: Sufficient quantities of mud materials will be on the well site at all times for the purpose of assuring well control and maintaining wellbore integrity. Surface interval will employ fresh water mud. The intermediate hole will utilize a diesel emulsified brine fluid to inhibit salt washout and prevent severe fluid losses. The production hole will employ oil base fluid to inhibit formation reactivity and of the appropriate density to maintain well control.

Describe the mud monitoring system utilized: Centrifuge separation system. Open tank monitoring with EDR will be used for drilling fluids and return volumes. Open tank monitoring will be used for cement and cuttings return volumes. Mud properties will be monitored at least every 24 hours using industry accepted mud check practices.

Circulating Medium Table

Operator Name: CENTENNIAL RESOURCE PRODUCTION LLC

Well Name: DONKEY KONG 1 FED COM

Well Number: 302H

Top Depth	Bottom Depth	Mud Type	Min Weight (lbs/gal)	Max Weight (lbs/gal)	Density (lbs/cu ft)	Gel Strength (lbs/100 sqft)	PH	Viscosity (CP)	Salinity (ppm)	Filtration (cc)	Additional Characteristics
5200	1726 4	OTHER : Brine/OBM	8.8	10							
0	1850	OTHER : Fresh Water	8.6	9.5							
1850	5200	OTHER : Brine	9	10							

Section 6 - Test, Logging, Coring

List of production tests including testing procedures, equipment and safety measures:

Will utilize MWD/LWD (Gamma ray logging) from intermediate hole to TD of the well.

List of open and cased hole logs run in the well:

GR

Coring operation description for the well:

n/a

Section 7 - Pressure

Anticipated Bottom Hole Pressure: 5070

Anticipated Surface Pressure: 2925

Anticipated Bottom Hole Temperature(F): 170

Anticipated abnormal pressures, temperatures, or potential geologic hazards? NO

Describe:

Contingency Plans geohazards description:

Contingency Plans geohazards attachment:

Hydrogen Sulfide drilling operations plan required? YES

Hydrogen sulfide drilling operations plan:

Donkey_Kong_302H_H2S_Plan_20181024115544.docx

Operator Name: CENTENNIAL RESOURCE PRODUCTION LLC

Well Name: DONKEY KONG 1 FED COM

Well Number: 302H

Section 8 - Other Information

Proposed horizontal/directional/multi-lateral plan submission:

Donkey_Kong_1_Fed_Com_302H_Plan_20190131130306.pdf

Other proposed operations facets description:

We are planning to use a spudder rig to preset surface casing.
Gas Capture Plan attached.

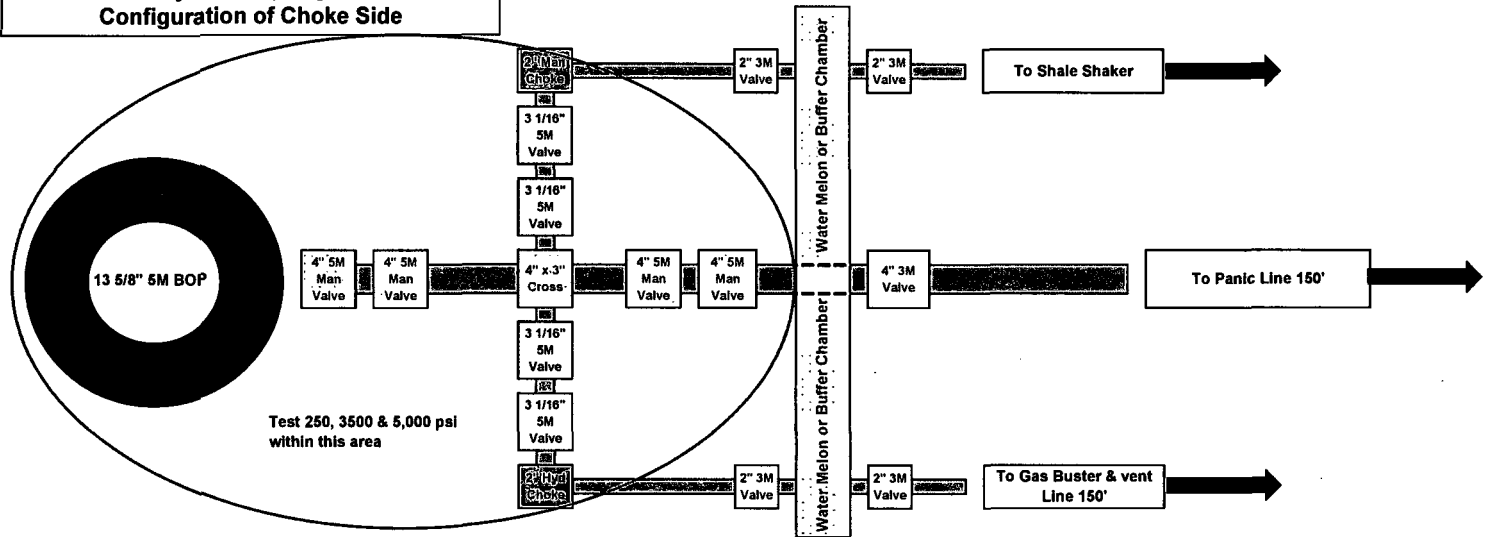
Other proposed operations facets attachment:

Donkey_Kong_Gas_Capture_Plan_20181024115914.pdf

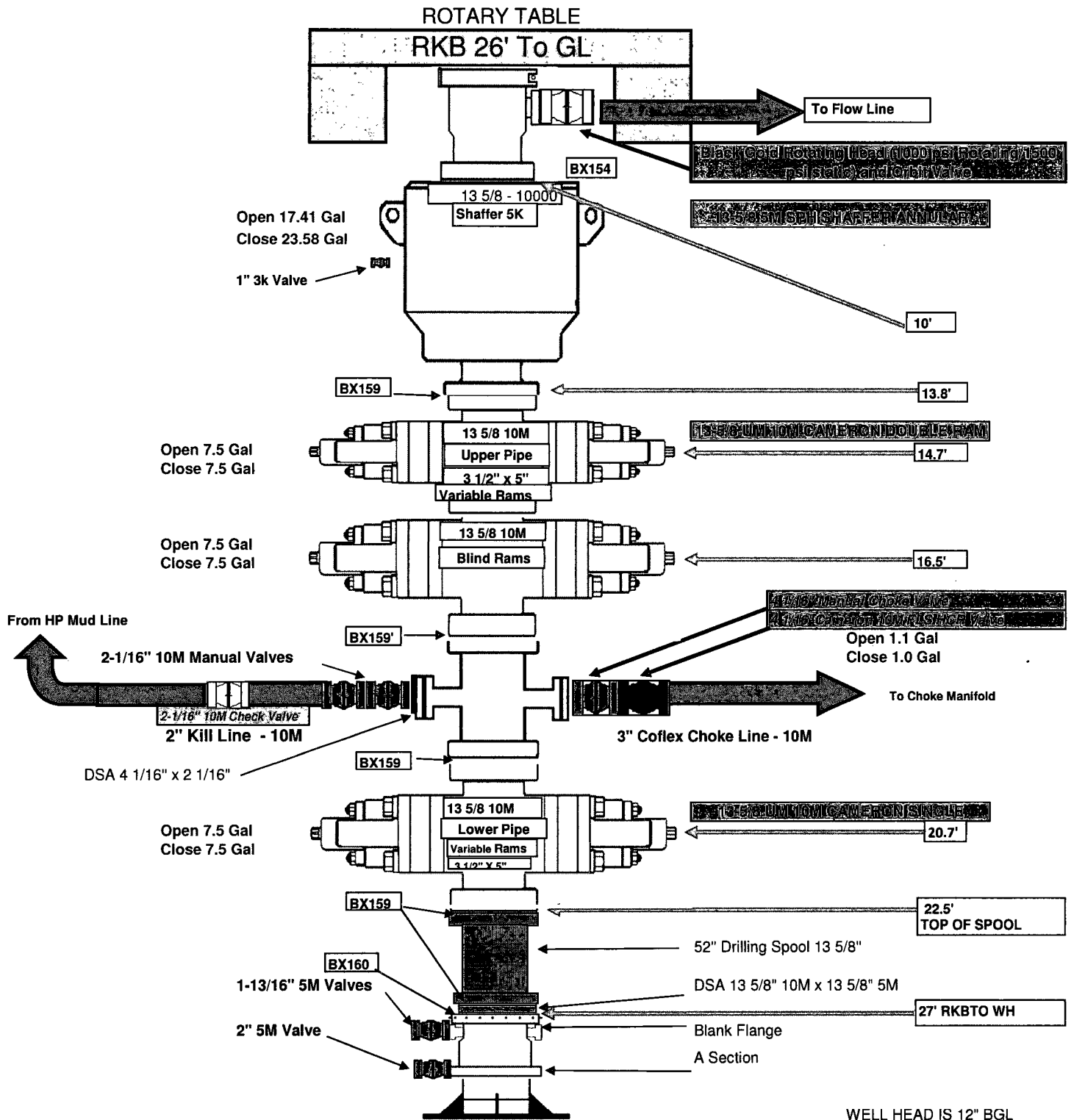
Other Variance attachment:

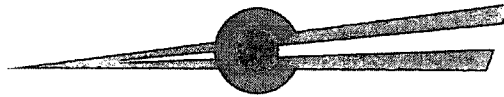
Flex_Hose_Specs_20181024115935.pdf

Centennial - Any Bone Spring Well: Minimum Configuration of Choke Side



H&P 650





CENTENNIAL

RESOURCE DEVELOPMENT, INC

HYDROGEN SULFIDE CONTINGENCY PLAN

Donkey Kong 1 Fed Com 302H

Section 23

T 23S R 34E 2240' FSL & 1386' FEL

Lea County, NM

Initial Date: 10/9/18

Revision Date:

Table of Contents

Page 3: Introduction

Page 4: Directions to Location

Page 5: Safe Briefing Areas

Page 6: Drill Site Location Setup

Page 7: Toxicity of Various Gases

Page 10: H₂S Required Equipment

Page 11: Determination of Radius of Exposure

Page 12: Emergency Contact List

INTRODUCTION

This plan specifies precautionary measures, safety equipment, emergency procedures, responsibilities, duties, and the compliance status pertaining to the production operations of Hydrogen Sulfide producing wells on:

Centennial Resource Development, Inc.

This plan will be in full effect prior to and continuing with all drilling operations for all wells producing potential Hydrogen Sulfide on the



This plan was developed in response to the potential hazards involved when producing formations that may contain Hydrogen Sulfide (H₂S) It has been written in compliance with current **New Mexico Oil Conservation Division Rule 118 and Bureau of Land Management 43 CFR 3160 Onshore Order No. 6.**

All personnel shall receive proper H₂S training in accordance with Onshore Order III.C.3.a

This plan shall require the full cooperation and efforts of all individuals participating in the production of potential H₂S wells.

Each individual is required to know their assigned responsibilities and duties in regard to normal production operations and emergency procedures.

Each person should thoroughly understand and be able to use all safety related equipment on the production facility.

Each person should become familiar with the location of all safety equipment and become involved in ensuring that all equipment is properly stored, easily accessible, and routinely maintained.

An ongoing training program will remain in effect with regular training, equipment inspections, and annual certifications for all personnel.

Centennial Resource Development, Inc. shall make every reasonable effort to provide all possible safeguards to protect all personnel, both on this location and in the immediate vicinity, from the harmful effects of H₂S exposure, if a release to the atmosphere should occur.

DIRECTIONS TO LOCATION

Donkey Kong 1 Fed. Com. 302H

Section 23

T 23S R 34E 2240' FSL & 1386' FEL

Lea County, NM

COMMENCING AT THE INTERSECTION OF N.M. 207 AND N.M. 176 IN EUNICE, NEW MEXICO, PROCEED IN A SOUTHERLY DIRECTION ALONG NM-207 APPROXIMATELY 2.5 MILES TO THE JUNCTION OF THIS ROAD AND DELAWARE BASIN ROAD TO THE WEST; TURN RIGHT AND PROCEED IN A WESTERLY, THEN SOUTHWESTERLY, THEN WESTERLY DIRECTION APPROXIMATELY 20.3 MILES TO THE JUNCTION OF THIS ROAD AND AN EXISTING ROAD TO THE NORTH; TURN RIGHT AND PROCEED IN A NORTHERLY DIRECTION APPROXIMATELY 0.3 MILES TO THE BEGINNING OF THE PROPOSED ACCESS FOR THE DUCK HUNT 1 STATE COM #601 & #602 TO THE EAST; FOLLOW ROAD FLAGS IN AN EASTERLY, THEN NORTHERLY, DIRECTION APPROXIMATELY 6,204' TO THE BEGINNING OF THE ROAD FLAGS TO THE NORTHWEST; FOLLOW ROAD FLAGS IN A NORTHWESTERLY DIRECTION APPROXIMATELY 29' TO THE PROPOSED LOCATION. TOTAL DISTANCE FROM EUNICE, NEW MEXICO TO THE PROPOSED WELL LOCATION IS APPROXIMATELY 24.3 MILES.

SAFE BRIEFING AREAS

Two areas will be designated as “SAFE BRIEFING AREAS”.

The Primary Safe Briefing Area

If the Primary Safe Briefing Area cannot be used due to wind conditions; the designated secondary safe briefing area will be used.

These two areas are so designated for accessibility reasons related to self-contained safe breathing air device locations, evacuation muster point utility, and for ease of overall communication, organizational support, as well as the all-important prevailing wind directions. Drawings of the facility denoting these locations are included on Page 15.

If H₂S is detected in concentrations equal to or in excess of 15 PPM, all personnel not assigned emergency duties are to assemble in the appropriate “SAFE BRIEFING AREA” for instructions.

Wind Direction Indicators: A windsock, shall be positioned, allowing the wind direction to be observed from anywhere on the charted facility location.

Warning-DANGER SIGNS for Approaching Traffic: All signs shall also be illuminated under conditions of poor visibility.

**DANGER
POISONOUS GAS
HYDROGEN SULFIDE
DO NOT APPROACH IF AMBER LIGHTS ARE FLASHING**

An amber strobe light system will be activated for H₂S concentrations of 10 PPM or greater and an audible alarm will sound when H₂S exceeds 15 ppm, and. This condition will exist until the all clear is given.

DRILL SITE LOCATION:

1. The drilling rig should be situated on location such that the prevailing winds blow across the rig toward the reserve pit or at right angles to a line from the rig to the reserve pit.
2. The entrance to the location should be designated so that it can be barricaded if Hydrogen Sulfide emergency conditions arise. An auxiliary exit (or entrance) should be available in case of a catastrophe; a shift in wind direction would not preclude escape from the location. Appropriate warning signs and flags should be placed at all location entrances.
3. Once H₂S safety procedures are established on location, no beards or facial hair, which will interfere with face seal or mask, will be allowed on location.
4. A minimum of two BRIEFING AREAS will be established, no less than 250 feet from the wellhead and in such location that at least one area will be up-wind from the well at all times. Upon recognition of an emergency situation, all personnel should assemble at the designated briefing areas for instructions.
5. A safety equipment trailer will be station at one of the briefing areas.
6. Windsocks will be installed and wind streamers (6 to 8 feet above ground level) placed at the location entrance. Windsocks shall be illuminated for nighttime operations. Personnel should develop wind direction consciousness.
7. The mud-logging trailer will be located so as to minimize the danger from the gas that breaks out of the drilling fluid.
8. Shale shaker mud tanks will be located so as to minimize the danger from gas that breaks out of the drilling fluid.
9. Electric power plant(s) will be located as far from the well bore as practical so that it may be used under conditions where it otherwise would have to be shut down.
10. When approaching depth where Hydrogen Sulfide may be encountered, appropriate warning signs will be posted on all access roads to the location and at the foot of all stairways to the derrick floor.
11. Appropriate smoking areas will be designated, and smoking will be prohibited elsewhere.

The table below lists various poisonous gases and the concentrations at which they become dangerous.

TOXICITY OF VARIOUS GASES

TOXICITY OF GASES (Taken from API RP-49 September 1974 – Re-issued August 1978)					
Common Name	Chemical Formula	Gravity (Air = 1)	Threshold 1 Limit	Hazardous 2 Limit	Lethal 3 Limit
Hydrogen Sulfide	H ₂ S	1.18	10 ppm	250 ppm/1hr	600 ppm
Sulfur Dioxide	SO ₂	2.21	20 ppm	---	1000 ppm
Carbon Monoxide	CO	0.97	50 ppm	400 ppm/1hr	1000 ppm
Carbon Dioxide	CO ₂	1.52	5000 ppm	5%	10%
Methane	CH ₄	0.55	90000 ppm	Combustible Above 5% in Air	

1. Threshold concentration at which it is believed that all workers may repeatedly be exposed day after day, without adverse effect	2. Hazardous concentration that may cause death	3. Lethal concentration that will cause death with short-term exposure
---	---	--

Properties of Gases

The produced gas will probably be a mixture of Carbon Dioxide, Hydrogen Sulfide, and Methane.

Carbon Dioxide

Carbon Dioxide (CO₂) is usually considered inert and is commonly used to extinguish fires.

It is heavier than air (1.52 times) and it will concentrate in low areas of still air.

Humans cannot breathe air containing more than 10% CO₂ without losing consciousness. Air containing 5% CO₂ will cause disorientation in a few minutes.

Continued exposures to CO₂ after being affected will cause convulsions, coma, and respiratory failure.

The threshold limit of CO₂ is 5000 ppm.

Short-term exposure to 50,000 PPM (5%) is reasonable. This gas is colorless and odorless and can be tolerated in relatively high concentrations.

Hydrogen Sulfide

Hydrogen Sulfide (H₂S) itself is a colorless, transparent gas and is flammable. It is heavier than air and, hence, may accumulate in low places.

Although the slightest presence of H₂S in the air is normally detectable by its characteristic “rotten egg” odor, it is dangerous to rely on the odor as a means of detecting excessive concentrations because the sense of smell is rapidly lost, allowing lethal concentrations to be accumulated without warning. The following table indicates the poisonous nature of Hydrogen Sulfide.

HYDROGEN SULFIDE TOXICITY			
Concentration			Effects
%H ₂ S	PPM	GR/100 SCF 1	
0.001	10	0.65	Safe for 8 hours without respirator. Obvious and unpleasant odor.
0.002	20	1.30	Burning in eyes and irritation of respiratory tract after on hour.
0.01	100	6.48	Kills smell in 3 to 15 minutes; may sting eyes and throat.
0.02	200	12.96	Kills smell shortly; stings eyes and throat.
0.05	500	32.96	Dizziness; breathing ceases in a few minutes; need prompt artificial respiration.
0.07	700	45.92	Unconscious quickly; death will result if not rescued promptly
0.10	1000	64.80	DEATH!
Note: 1 grain per 100 cubic feet			

Sulfur Dioxide

Sulfur Dioxide is a colorless, transparent gas and is non-flammable.

Sulfur Dioxide (SO₂) is produced during the burning of H₂S. Although SO₂ is heavier than air, it will be picked up by a breeze and carried downwind at elevated temperatures. Since Sulfur Dioxide is extremely irritating to the eyes and mucous membranes of the upper respiratory tract, it has exceptionally good warning powers in this respect. The following table indicates the toxic nature of the gas.

SULFUR DIOXIDE TOXICITY		
Concentration		Effects
%SO ₂	PPM	
0.0005	3 to 5	Pungent odor-normally a person can detect SO ₂ in this range.
0.0012	12	Throat irritation, coughing, and constriction of the chest tearing and smarting of eyes.
0.15	150	So irritating that it can only be endured for a few minutes.
0.05	500	Causes a sense of suffocation, even with first breath.

H₂S REQUIRED EQUIPMENT LIST

RESPIRATORY SAFETY SYSTEMS

- Working cascade system available on rig floor and pit system & 750' of air line hose
- Four (4) breathing air manifolds
- Four (4) 30-minute rescue packs
- Five (5) work/Escape units
- Five (5) escape units
- One (1) filler hose for the work/escape/rescue units

DETECTION AND ALARM SYSTEM

- 4 channel H₂S monitor
- 4 wireless H₂S monitors
- H₂S alarm system (Audible/Red strobe)
- Personal gas monitor for each person on location
- Gas sample tubes

WELL CONTROL EQUIPMENT

- Flare line with remote ignitor and backup flare gun, placed 150' from wellhead
- Choke manifold with remotely operated choke
- Mud gas separator

VISUAL WARNING SYSTEMS

- One color code condition sign will be placed at each entrance reflecting possible conditions at the site
- A colored condition flag will be on display, reflecting current condition at the site at the time
- At least 4 wind socks placed on location, visible at all angles and locations

MUD PROGRAM

- Mud will contain sufficient weight and additives to control and minimize H₂S

METALLURGY

- All drill strings, casing, tubing, wellhead, BOP, spools, kill lines, choke manifold and lines, and valves shall be suitable for anticipated H₂S volume and pressure

COMMUNICATION

- Cell phones, intercoms, and satellite phones will be available on location

ADDITIONAL SAFETY RELATED ITEMS

- Stretcher
- 2 OSHA full body harness

- **20# class ABC fire extinguisher**

DETERMINATION OF RADIUS OF EXPOSURE

Potentially hazardous volume means a volume of gas of such H₂S concentration and flow rate that it may result in radius of exposure-calculated ambient concentrations of 100 ppm H₂S at any occupied residence, school, church, park, school bus stop, place of business or other area where the public could reasonably be expected to frequent, or 500 ppm H₂S at any Federal, State, County or municipal road or highway.

Currently there are no residence located within the ROE

Radius of exposure means the calculation resulting from using the Pasquill -Gifford derived equation, or by such other method(s) that may be approved by the authorized officer. Advanced Fire and Safety has provided the Pasquill-Gifford formula in excel format for simple calculations.

NEW MEXICO OIL & GAS CONSERVATION DIVISION 118

Donkey Kong II Red Com 302H

H₂S Concentration- **500** PPM (Block 13)

Maximum Escape Volume- **2400** MCF/Day (Block 13)

100 PPM Radius of Exposure (Block 15)- **32**

(Formula= $1.589 \times (B5/1000000) \times (B6 \times 1000) \times .6258$)

500 PPM Radius of Exposure (Block 16)- **37**

(Formula= $.4546 \times (B5/1000000) \times (B6 \times 1000) \times .6258$)

EMERGENCY CONTACT LIST

911 is available in the area			
NAME	POSITION	COMPANY	NUMBER
Centennial Contacts			
Jeremy Ray	Drilling Engineer	CDEV	303-263-7872
Ricky Mills/John Helm	Superintendent	CDEV	432-305-1068
Mike Ponder/Wayne Miller	Field Superintendent	CDEV	432-287-3003
Brett Thompson	Drilling Manager	CDEV	720-656-7027
Reggie Phillips	HSE Manager	CDEV	432-638-3380
H&P 650 Drilling Office	Drilling Supervisor	CDEV	432-538-3343
Local Emergency Response			
Fire Department			575-395-2511
Jal Community Hospital			505-395-2511
State Police			505-827-9000
Lea County Sheriff			575-396-3611
Safety Contractor			
Advanced Safety	Office	Advanced Safety	833-296-3913
Joe Gadway	Permian Supervisor	Advanced Safety	318-446-3716
Clint Hudson	Operations Manager	Advanced Safety	337-552-8330
Well Control Company			
Wild Well Control			866-404-9564
Contractors			
Tommy E Lee	Pump Trucks		432-813-7140
Paul Smith	Drilling Fluids	Momentum	307-258-6254
Compass Coordinators	Cement	Compass	432-561-5970



Centennial Resource Development, Inc.

**Lea Co., NM (NAD83)
Donkey Kong 1 Fed Com
302H**

OH

Plan: Plan #1

Standard Planning Report

19 September, 2018





Project: Lea Co., NM (NAD83)
Site: Donkey Kong 1 Fed Com
Well: 302H
Wellbore: OH
Design: Plan #1
Lat: 32.332538
Long: -103.419704
GL: 3365.00
KB: RKB=25' @ 3390.00ufth (H&P 650)



↑ M
↑ A
↑
Azimuths to True North
Magnetic North: 6.73°
Magnetic Field
Strength: 47889.6nT
Dip Angle: 60.17°
Date: 09/18/2018
Model: IGRF2015

WELL DETAILS: 302H

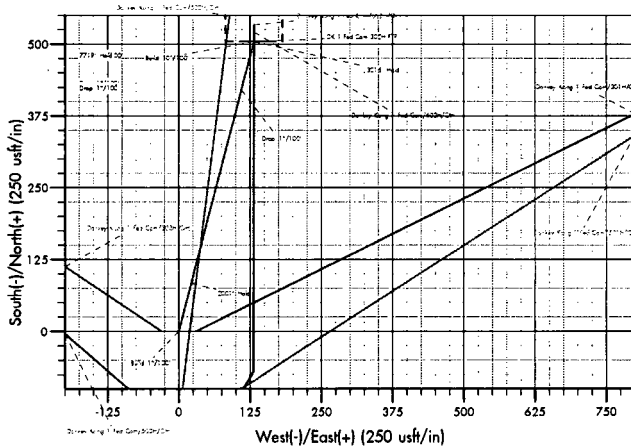
+N/-S	+E/-W	Northing	Easting	Latitude	Longitude
0.00	0.00	485912.62	823529.79	32.332538	-103.419704

WELLBORE TARGET DETAILS (LAT/LONG)

Name	TVD	+N/-S	+E/-W	Northing	Easting	Shape
DK 1 Fed Com 302H FTP	0.00	504.74	131.86	486418.47	823657.34	Point
DK 1 Fed Com 302H PBHL	9750.00	8223.98	144.06	494137.53	823603.70	Point

SECTION DETAILS

MD	Inc	Azi	TVD	+N/-S	+E/-W	Flag	IFace	VSet	Annotation
0.00	0.00	0.00	0.00	0.00	0.00	0.00	0.00	0.00	
2000.00	0.00	0.00	2000.00	0.00	0.00	0.00	0.00	0.00	Build 1"/100'
3000.08	10.00	14.64	2995.01	84.23	22.00	1.00	14.64	84.60	2001' Hold
5001.47	10.00	14.64	4965.99	420.51	109.86	0.00	0.00	422.37	Drop 1"/100'
6001.55	0.00	0.00	5961.00	504.74	131.86	1.00	180.00	506.98	321.6' Hold
9217.39	0.00	0.00	9177.04	504.74	131.86	0.00	0.00	506.98	Build 10"/100'
10117.59	90.00	0.09	9750.00	1077.70	132.77	0.09	0.09	1079.86	71.46' Hold
17263.88	90.00	0.09	9750.00	8223.98	144.06	0.00	0.00	8225.24	TD at 17263.88



CASING DETAILS

No casing data is available

Formation Tops

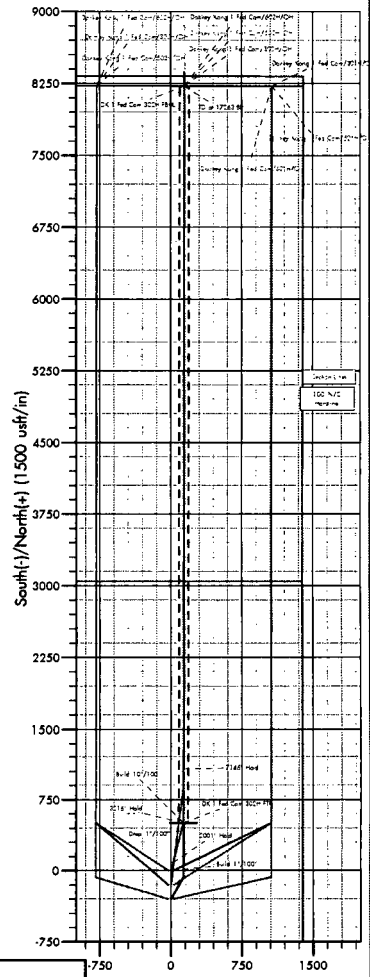
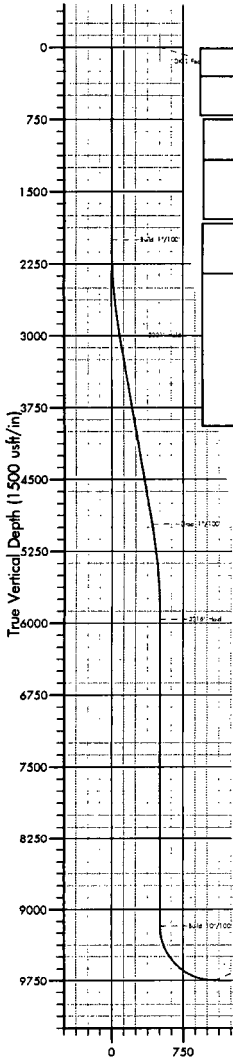
No formation data is available

Vertical Section at 1.00° (1500 usf/in)

Plan: Plan #1 (302H/OH)

Created By: Dusty Meyer Date: 8/21 September 19 2018

West(-)/East(+) (1500 usf/in)



Database:	EDM 5000.1 Single User Db	Local Co-ordinate Reference:	Well 302H
Company:	Centennial Resource Development, Inc.	TVD Reference:	RKB=25' @ 3390.00usft (H&P 650)
Project:	Lea Co., NM (NAD83)	MD Reference:	RKB=25' @ 3390.00usft (H&P 650)
Site:	Donkey Kong 1 Fed Com	North Reference:	True
Well:	302H	Survey Calculation Method:	Minimum Curvature
Wellbore:	OH		
Design:	Plan #1		

Project	Lea Co., NM (NAD83)		
Map System:	US State Plane 1983	System Datum:	Mean Sea Level
Geo Datum:	North American Datum 1983		
Map Zone:	New Mexico Eastern Zone		

Site	Donkey Kong 1 Fed Com				
Site Position:		Northing:	485,612.97 usft	Latitude:	32.331713
From:	Map	Easting:	823,562.72 usft	Longitude:	-103.419606
Position Uncertainty:	0.00 usft	Slot Radius:	13-3/16 "	Grid Convergence:	0.49

Well	302H					
Well Position	+N-S	299.92 usft	Northing:	485,912.62 usft	Latitude:	32.332538
	+E-W	-30.37 usft	Easting:	823,529.79 usft	Longitude:	-103.419705
Position Uncertainty		0.00 usft	Wellhead Elevation:		Ground Level:	3,365.00 usft

Wellbore	OH				
Magnetics	Model Name	Sample Date	Declination (°)	Dip Angle (°)	Field Strength (nT)
	IGRF2015	09/18/18	6.75	60.17	47,889.58492734

Design	Plan #1			
Audit Notes:				
Version:	Phase:	PLAN	Tie On Depth:	0.00
Vertical Section:	Depth From (TVD) (usft)	+N-S (usft)	+E-W (usft)	Direction (°)
	0.00	0.00	0.00	1.00

Plan Survey Tool Program	Date	09/19/18		
Depth From (usft)	Depth To (usft)	Survey (Wellbore)	Tool Name	Remarks
1	0.00	17,263.88	Plan #1 (OH)	MWD+IFR1+MS OWSG MWD + IFR1 + Multi-SI

Plan Sections										
Measured Depth (usft)	Inclination (°)	Azimuth (°)	Vertical Depth (usft)	+N-S (usft)	+E-W (usft)	Dogleg Rate (°/100usft)	Build Rate (°/100usft)	Turn Rate (°/100usft)	TFO (°)	Target
0.00	0.00	0.00	0.00	0.00	0.00	0.00	0.00	0.00	0.00	
2,000.00	0.00	0.00	2,000.00	0.00	0.00	0.00	0.00	0.00	0.00	
3,000.08	10.00	14.64	2,995.01	84.23	22.00	1.00	1.00	0.00	14.64	
5,001.47	10.00	14.64	4,965.99	420.51	109.86	0.00	0.00	0.00	0.00	
6,001.55	0.00	0.00	5,961.00	504.74	131.86	1.00	-1.00	0.00	180.00	
9,217.59	0.00	0.00	9,177.04	504.74	131.86	0.00	0.00	0.00	0.00	
10,117.59	90.00	0.09	9,750.00	1,077.70	132.77	10.00	10.00	0.00	0.09	
17,263.88	90.00	0.09	9,750.00	8,223.98	144.06	0.00	0.00	0.00	0.00	DK 1 Fed Com 302H

Database:	EDM 5000.1 Single User Db	Local Co-ordinate Reference:	Well 302H
Company:	Centennial Resource Development, Inc.	TVD Reference:	RKB=25' @ 3390.00usft (H&P 650)
Project:	Lea Co., NM (NAD83)	MD Reference:	RKB=25' @ 3390.00usft (H&P 650)
Site:	Donkey Kong 1 Fed Com	North Reference:	True
Well:	302H	Survey Calculation Method:	Minimum Curvature
Wellbore:	OH		
Design:	Plan #1		

Planned Survey										
Measured Depth (usft)	Inclination (°)	Azimuth (°)	Vertical Depth (usft)	+N/-S (usft)	+E/-W (usft)	Vertical Section (usft)	Dogleg Rate (°/100usft)	Build Rate (°/100usft)	Turn Rate (°/100usft)	
0.00	0.00	0.00	0.00	0.00	0.00	0.00	0.00	0.00	0.00	
100.00	0.00	0.00	100.00	0.00	0.00	0.00	0.00	0.00	0.00	
200.00	0.00	0.00	200.00	0.00	0.00	0.00	0.00	0.00	0.00	
300.00	0.00	0.00	300.00	0.00	0.00	0.00	0.00	0.00	0.00	
400.00	0.00	0.00	400.00	0.00	0.00	0.00	0.00	0.00	0.00	
500.00	0.00	0.00	500.00	0.00	0.00	0.00	0.00	0.00	0.00	
600.00	0.00	0.00	600.00	0.00	0.00	0.00	0.00	0.00	0.00	
700.00	0.00	0.00	700.00	0.00	0.00	0.00	0.00	0.00	0.00	
800.00	0.00	0.00	800.00	0.00	0.00	0.00	0.00	0.00	0.00	
900.00	0.00	0.00	900.00	0.00	0.00	0.00	0.00	0.00	0.00	
1,000.00	0.00	0.00	1,000.00	0.00	0.00	0.00	0.00	0.00	0.00	
1,100.00	0.00	0.00	1,100.00	0.00	0.00	0.00	0.00	0.00	0.00	
1,200.00	0.00	0.00	1,200.00	0.00	0.00	0.00	0.00	0.00	0.00	
1,300.00	0.00	0.00	1,300.00	0.00	0.00	0.00	0.00	0.00	0.00	
1,400.00	0.00	0.00	1,400.00	0.00	0.00	0.00	0.00	0.00	0.00	
1,500.00	0.00	0.00	1,500.00	0.00	0.00	0.00	0.00	0.00	0.00	
1,600.00	0.00	0.00	1,600.00	0.00	0.00	0.00	0.00	0.00	0.00	
1,700.00	0.00	0.00	1,700.00	0.00	0.00	0.00	0.00	0.00	0.00	
1,800.00	0.00	0.00	1,800.00	0.00	0.00	0.00	0.00	0.00	0.00	
1,900.00	0.00	0.00	1,900.00	0.00	0.00	0.00	0.00	0.00	0.00	
2,000.00	0.00	0.00	2,000.00	0.00	0.00	0.00	0.00	0.00	0.00	
Build 1°/100'										
2,100.00	1.00	14.64	2,099.99	0.84	0.22	0.85	1.00	1.00	0.00	
2,200.00	2.00	14.64	2,199.96	3.38	0.88	3.39	1.00	1.00	0.00	
2,300.00	3.00	14.64	2,299.86	7.60	1.98	7.63	1.00	1.00	0.00	
2,400.00	4.00	14.64	2,399.68	13.50	3.53	13.56	1.00	1.00	0.00	
2,500.00	5.00	14.64	2,499.37	21.09	5.51	21.19	1.00	1.00	0.00	
2,600.00	6.00	14.64	2,598.90	30.37	7.93	30.50	1.00	1.00	0.00	
2,700.00	7.00	14.64	2,698.26	41.32	10.79	41.50	1.00	1.00	0.00	
2,800.00	8.00	14.64	2,797.40	53.95	14.09	54.19	1.00	1.00	0.00	
2,900.00	9.00	14.64	2,896.30	68.25	17.83	68.55	1.00	1.00	0.00	
3,000.08	10.00	14.64	2,995.01	84.23	22.00	84.60	1.00	1.00	0.00	
2001' Hold										
3,100.00	10.00	14.64	3,093.41	101.02	26.39	101.47	0.00	0.00	0.00	
3,200.00	10.00	14.64	3,191.89	117.82	30.78	118.34	0.00	0.00	0.00	
3,300.00	10.00	14.64	3,290.37	134.63	35.17	135.22	0.00	0.00	0.00	
3,400.00	10.00	14.64	3,388.85	151.43	39.56	152.10	0.00	0.00	0.00	
3,500.00	10.00	14.64	3,487.33	168.23	43.95	168.97	0.00	0.00	0.00	
3,600.00	10.00	14.64	3,585.81	185.03	48.34	185.85	0.00	0.00	0.00	
3,700.00	10.00	14.64	3,684.29	201.83	52.73	202.73	0.00	0.00	0.00	
3,800.00	10.00	14.64	3,782.78	218.64	57.12	219.60	0.00	0.00	0.00	
3,900.00	10.00	14.64	3,881.26	235.44	61.51	236.48	0.00	0.00	0.00	
4,000.00	10.00	14.64	3,979.74	252.24	65.90	253.36	0.00	0.00	0.00	
4,100.00	10.00	14.64	4,078.22	269.04	70.29	270.23	0.00	0.00	0.00	
4,200.00	10.00	14.64	4,176.70	285.85	74.67	287.11	0.00	0.00	0.00	
4,300.00	10.00	14.64	4,275.18	302.65	79.06	303.99	0.00	0.00	0.00	
4,400.00	10.00	14.64	4,373.66	319.45	83.45	320.86	0.00	0.00	0.00	
4,500.00	10.00	14.64	4,472.14	336.25	87.84	337.74	0.00	0.00	0.00	
4,600.00	10.00	14.64	4,570.62	353.06	92.23	354.62	0.00	0.00	0.00	
4,700.00	10.00	14.64	4,669.10	369.86	96.62	371.49	0.00	0.00	0.00	
4,800.00	10.00	14.64	4,767.58	386.66	101.01	388.37	0.00	0.00	0.00	
4,900.00	10.00	14.64	4,866.06	403.46	105.40	405.25	0.00	0.00	0.00	
5,001.47	10.00	14.64	4,965.99	420.51	109.86	422.37	0.00	0.00	0.00	

Database:	EDM 5000.1 Single User Db	Local Co-ordinate Reference:	Well 302H
Company:	Centennial Resource Development, Inc.	TVD Reference:	RKB=25' @ 3390.00usft (H&P 650)
Project:	Lea Co., NM (NAD83)	MD Reference:	RKB=25' @ 3390.00usft (H&P 650)
Site:	Donkey Kong 1 Fed Com	North Reference:	True
Well:	302H	Survey Calculation Method:	Minimum Curvature
Wellbore:	OH		
Design:	Plan #1		

Planned Survey									
Measured Depth (usft)	Inclination (°)	Azimuth (°)	Vertical Depth (usft)	+N/-S (usft)	+E/-W (usft)	Vertical Section (usft)	Dogleg Rate (°/100usft)	Build Rate (°/100usft)	Turn Rate (°/100usft)
Drop 1°/100'									
5,100.00	9.02	14.64	5,063.16	436.26	113.97	438.19	1.00	-1.00	0.00
5,200.00	8.02	14.64	5,162.06	450.59	117.71	452.58	1.00	-1.00	0.00
5,300.00	7.02	14.64	5,261.20	463.24	121.02	465.29	1.00	-1.00	0.00
5,400.00	6.02	14.64	5,360.55	474.22	123.89	476.32	1.00	-1.00	0.00
5,500.00	5.02	14.64	5,460.09	483.52	126.31	485.66	1.00	-1.00	0.00
5,600.00	4.02	14.64	5,559.78	491.14	128.30	493.31	1.00	-1.00	0.00
5,700.00	3.02	14.64	5,659.59	497.07	129.85	499.27	1.00	-1.00	0.00
5,800.00	2.02	14.64	5,759.49	501.31	130.96	503.53	1.00	-1.00	0.00
5,900.00	1.02	14.64	5,859.45	503.87	131.63	506.10	1.00	-1.00	0.00
6,001.55	0.00	0.00	5,961.00	504.74	131.86	506.98	1.00	-1.00	0.00
3216' Hold									
6,100.00	0.00	0.00	6,059.45	504.74	131.86	506.98	0.00	0.00	0.00
6,200.00	0.00	0.00	6,159.45	504.74	131.86	506.98	0.00	0.00	0.00
6,300.00	0.00	0.00	6,259.45	504.74	131.86	506.98	0.00	0.00	0.00
6,400.00	0.00	0.00	6,359.45	504.74	131.86	506.98	0.00	0.00	0.00
6,500.00	0.00	0.00	6,459.45	504.74	131.86	506.98	0.00	0.00	0.00
6,600.00	0.00	0.00	6,559.45	504.74	131.86	506.98	0.00	0.00	0.00
6,700.00	0.00	0.00	6,659.45	504.74	131.86	506.98	0.00	0.00	0.00
6,800.00	0.00	0.00	6,759.45	504.74	131.86	506.98	0.00	0.00	0.00
6,900.00	0.00	0.00	6,859.45	504.74	131.86	506.98	0.00	0.00	0.00
7,000.00	0.00	0.00	6,959.45	504.74	131.86	506.98	0.00	0.00	0.00
7,100.00	0.00	0.00	7,059.45	504.74	131.86	506.98	0.00	0.00	0.00
7,200.00	0.00	0.00	7,159.45	504.74	131.86	506.98	0.00	0.00	0.00
7,300.00	0.00	0.00	7,259.45	504.74	131.86	506.98	0.00	0.00	0.00
7,400.00	0.00	0.00	7,359.45	504.74	131.86	506.98	0.00	0.00	0.00
7,500.00	0.00	0.00	7,459.45	504.74	131.86	506.98	0.00	0.00	0.00
7,600.00	0.00	0.00	7,559.45	504.74	131.86	506.98	0.00	0.00	0.00
7,700.00	0.00	0.00	7,659.45	504.74	131.86	506.98	0.00	0.00	0.00
7,800.00	0.00	0.00	7,759.45	504.74	131.86	506.98	0.00	0.00	0.00
7,900.00	0.00	0.00	7,859.45	504.74	131.86	506.98	0.00	0.00	0.00
8,000.00	0.00	0.00	7,959.45	504.74	131.86	506.98	0.00	0.00	0.00
8,100.00	0.00	0.00	8,059.45	504.74	131.86	506.98	0.00	0.00	0.00
8,200.00	0.00	0.00	8,159.45	504.74	131.86	506.98	0.00	0.00	0.00
8,300.00	0.00	0.00	8,259.45	504.74	131.86	506.98	0.00	0.00	0.00
8,400.00	0.00	0.00	8,359.45	504.74	131.86	506.98	0.00	0.00	0.00
8,500.00	0.00	0.00	8,459.45	504.74	131.86	506.98	0.00	0.00	0.00
8,600.00	0.00	0.00	8,559.45	504.74	131.86	506.98	0.00	0.00	0.00
8,700.00	0.00	0.00	8,659.45	504.74	131.86	506.98	0.00	0.00	0.00
8,800.00	0.00	0.00	8,759.45	504.74	131.86	506.98	0.00	0.00	0.00
8,900.00	0.00	0.00	8,859.45	504.74	131.86	506.98	0.00	0.00	0.00
9,000.00	0.00	0.00	8,959.45	504.74	131.86	506.98	0.00	0.00	0.00
9,100.00	0.00	0.00	9,059.45	504.74	131.86	506.98	0.00	0.00	0.00
9,200.00	0.00	0.00	9,159.45	504.74	131.86	506.98	0.00	0.00	0.00
9,217.59	0.00	0.00	9,177.04	504.74	131.86	506.98	0.00	0.00	0.00
Build 10°/100'									
9,250.00	3.24	0.09	9,209.43	505.66	131.86	507.89	10.00	10.00	0.00
9,300.00	8.24	0.09	9,259.17	510.66	131.87	512.89	10.00	10.00	0.00
9,350.00	13.24	0.09	9,308.27	519.97	131.88	522.20	10.00	10.00	0.00
9,400.00	18.24	0.09	9,356.38	533.53	131.91	535.76	10.00	10.00	0.00
9,450.00	23.24	0.09	9,403.13	551.24	131.93	553.46	10.00	10.00	0.00
9,500.00	28.24	0.09	9,448.15	572.94	131.97	575.17	10.00	10.00	0.00
9,550.00	33.24	0.09	9,491.11	598.49	132.01	600.71	10.00	10.00	0.00

Database:	EDM 5000.1 Single User Db	Local Co-ordinate Reference:	Well 302H
Company:	Centennial Resource Development, Inc.	TVD Reference:	RKB=25' @ 3390.00usft (H&P 650)
Project:	Lea Co., NM (NAD83)	MD Reference:	RKB=25' @ 3390.00usft (H&P 650)
Site:	Donkey Kong 1 Fed Com	North Reference:	True
Well:	302H	Survey Calculation Method:	Minimum Curvature
Wellbore:	OH		
Design:	Plan #1		

Planned Survey									
Measured Depth (usft)	Inclination (°)	Azimuth (°)	Vertical Depth (usft)	+N/-S (usft)	+E/-W (usft)	Vertical Section (usft)	Dogleg Rate (°/100usft)	Build Rate (°/100usft)	Turn Rate (°/100usft)
9,600.00	38.24	0.09	9,531.68	627.69	132.05	629.91	10.00	10.00	0.00
9,650.00	43.24	0.09	9,569.56	660.31	132.11	662.52	10.00	10.00	0.00
9,700.00	48.24	0.09	9,604.44	696.11	132.16	698.32	10.00	10.00	0.00
9,750.00	53.24	0.09	9,636.07	734.81	132.22	737.01	10.00	10.00	0.00
9,800.00	58.24	0.09	9,664.21	776.12	132.29	778.32	10.00	10.00	0.00
9,850.00	63.24	0.09	9,688.64	819.73	132.36	821.92	10.00	10.00	0.00
9,900.00	68.24	0.09	9,709.18	865.30	132.43	867.49	10.00	10.00	0.00
9,950.00	73.24	0.09	9,725.66	912.49	132.50	914.67	10.00	10.00	0.00
10,000.00	78.24	0.09	9,737.98	960.93	132.58	963.11	10.00	10.00	0.00
10,050.00	83.24	0.09	9,746.02	1,010.26	132.66	1,012.43	10.00	10.00	0.00
10,100.00	88.24	0.09	9,749.73	1,060.11	132.74	1,062.27	10.00	10.00	0.00
10,117.59	90.00	0.09	9,750.00	1,077.70	132.77	1,079.86	10.00	10.00	0.00
7146' Hold									
10,200.00	90.00	0.09	9,750.00	1,160.11	132.90	1,162.26	0.00	0.00	0.00
10,300.00	90.00	0.09	9,750.00	1,260.11	133.05	1,262.24	0.00	0.00	0.00
10,400.00	90.00	0.09	9,750.00	1,360.11	133.21	1,362.23	0.00	0.00	0.00
10,500.00	90.00	0.09	9,750.00	1,460.11	133.37	1,462.22	0.00	0.00	0.00
10,600.00	90.00	0.09	9,750.00	1,560.11	133.53	1,562.21	0.00	0.00	0.00
10,700.00	90.00	0.09	9,750.00	1,660.11	133.69	1,662.19	0.00	0.00	0.00
10,800.00	90.00	0.09	9,750.00	1,760.11	133.84	1,762.18	0.00	0.00	0.00
10,900.00	90.00	0.09	9,750.00	1,860.11	134.00	1,862.17	0.00	0.00	0.00
11,000.00	90.00	0.09	9,750.00	1,960.11	134.16	1,962.16	0.00	0.00	0.00
11,100.00	90.00	0.09	9,750.00	2,060.11	134.32	2,062.14	0.00	0.00	0.00
11,200.00	90.00	0.09	9,750.00	2,160.11	134.48	2,162.13	0.00	0.00	0.00
11,300.00	90.00	0.09	9,750.00	2,260.11	134.63	2,262.12	0.00	0.00	0.00
11,400.00	90.00	0.09	9,750.00	2,360.11	134.79	2,362.10	0.00	0.00	0.00
11,500.00	90.00	0.09	9,750.00	2,460.11	134.95	2,462.09	0.00	0.00	0.00
11,600.00	90.00	0.09	9,750.00	2,560.11	135.11	2,562.08	0.00	0.00	0.00
11,700.00	90.00	0.09	9,750.00	2,660.11	135.27	2,662.07	0.00	0.00	0.00
11,800.00	90.00	0.09	9,750.00	2,760.11	135.42	2,762.05	0.00	0.00	0.00
11,900.00	90.00	0.09	9,750.00	2,860.11	135.58	2,862.04	0.00	0.00	0.00
12,000.00	90.00	0.09	9,750.00	2,960.10	135.74	2,962.03	0.00	0.00	0.00
12,100.00	90.00	0.09	9,750.00	3,060.10	135.90	3,062.02	0.00	0.00	0.00
12,200.00	90.00	0.09	9,750.00	3,160.10	136.06	3,162.00	0.00	0.00	0.00
12,300.00	90.00	0.09	9,750.00	3,260.10	136.22	3,261.99	0.00	0.00	0.00
12,400.00	90.00	0.09	9,750.00	3,360.10	136.37	3,361.98	0.00	0.00	0.00
12,500.00	90.00	0.09	9,750.00	3,460.10	136.53	3,461.96	0.00	0.00	0.00
12,600.00	90.00	0.09	9,750.00	3,560.10	136.69	3,561.95	0.00	0.00	0.00
12,700.00	90.00	0.09	9,750.00	3,660.10	136.85	3,661.94	0.00	0.00	0.00
12,800.00	90.00	0.09	9,750.00	3,760.10	137.01	3,761.93	0.00	0.00	0.00
12,900.00	90.00	0.09	9,750.00	3,860.10	137.16	3,861.91	0.00	0.00	0.00
13,000.00	90.00	0.09	9,750.00	3,960.10	137.32	3,961.90	0.00	0.00	0.00
13,100.00	90.00	0.09	9,750.00	4,060.10	137.48	4,061.89	0.00	0.00	0.00
13,200.00	90.00	0.09	9,750.00	4,160.10	137.64	4,161.88	0.00	0.00	0.00
13,300.00	90.00	0.09	9,750.00	4,260.10	137.80	4,261.86	0.00	0.00	0.00
13,400.00	90.00	0.09	9,750.00	4,360.10	137.95	4,361.85	0.00	0.00	0.00
13,500.00	90.00	0.09	9,750.00	4,460.10	138.11	4,461.84	0.00	0.00	0.00
13,600.00	90.00	0.09	9,750.00	4,560.10	138.27	4,561.83	0.00	0.00	0.00
13,700.00	90.00	0.09	9,750.00	4,660.10	138.43	4,661.81	0.00	0.00	0.00
13,800.00	90.00	0.09	9,750.00	4,760.10	138.59	4,761.80	0.00	0.00	0.00
13,900.00	90.00	0.09	9,750.00	4,860.10	138.74	4,861.79	0.00	0.00	0.00
14,000.00	90.00	0.09	9,750.00	4,960.10	138.90	4,961.77	0.00	0.00	0.00
14,100.00	90.00	0.09	9,750.00	5,060.10	139.06	5,061.76	0.00	0.00	0.00
14,200.00	90.00	0.09	9,750.00	5,160.10	139.22	5,161.75	0.00	0.00	0.00

Database:	EDM 5000.1 Single User Db	Local Co-ordinate Reference:	Well 302H
Company:	Centennial Resource Development, Inc.	TVD Reference:	RKB=25' @ 3390.00usft (H&P 650)
Project:	Lea Co., NM (NAD83)	MD Reference:	RKB=25' @ 3390.00usft (H&P 650)
Site:	Donkey Kong 1 Fed Com	North Reference:	True
Well:	302H	Survey Calculation Method:	Minimum Curvature
Wellbore:	OH		
Design:	Plan #1		

Planned Survey									
Measured Depth (usft)	Inclination (°)	Azimuth (°)	Vertical Depth (usft)	+N/-S (usft)	+E/-W (usft)	Vertical Section (usft)	Dogleg Rate (°/100usft)	Build Rate (°/100usft)	Turn Rate (°/100usft)
14,300.00	90.00	0.09	9,750.00	5,260.10	139.38	5,261.74	0.00	0.00	0.00
14,400.00	90.00	0.09	9,750.00	5,360.10	139.53	5,361.72	0.00	0.00	0.00
14,500.00	90.00	0.09	9,750.00	5,460.10	139.69	5,461.71	0.00	0.00	0.00
14,600.00	90.00	0.09	9,750.00	5,560.10	139.85	5,561.70	0.00	0.00	0.00
14,700.00	90.00	0.09	9,750.00	5,660.10	140.01	5,661.69	0.00	0.00	0.00
14,800.00	90.00	0.09	9,750.00	5,760.10	140.17	5,761.67	0.00	0.00	0.00
14,900.00	90.00	0.09	9,750.00	5,860.10	140.32	5,861.66	0.00	0.00	0.00
15,000.00	90.00	0.09	9,750.00	5,960.10	140.48	5,961.65	0.00	0.00	0.00
15,100.00	90.00	0.09	9,750.00	6,060.10	140.64	6,061.63	0.00	0.00	0.00
15,200.00	90.00	0.09	9,750.00	6,160.10	140.80	6,161.62	0.00	0.00	0.00
15,300.00	90.00	0.09	9,750.00	6,260.10	140.96	6,261.61	0.00	0.00	0.00
15,400.00	90.00	0.09	9,750.00	6,360.10	141.12	6,361.60	0.00	0.00	0.00
15,500.00	90.00	0.09	9,750.00	6,460.10	141.27	6,461.58	0.00	0.00	0.00
15,600.00	90.00	0.09	9,750.00	6,560.10	141.43	6,561.57	0.00	0.00	0.00
15,700.00	90.00	0.09	9,750.00	6,660.10	141.59	6,661.56	0.00	0.00	0.00
15,800.00	90.00	0.09	9,750.00	6,760.10	141.75	6,761.55	0.00	0.00	0.00
15,900.00	90.00	0.09	9,750.00	6,860.10	141.91	6,861.53	0.00	0.00	0.00
16,000.00	90.00	0.09	9,750.00	6,960.10	142.06	6,961.52	0.00	0.00	0.00
16,100.00	90.00	0.09	9,750.00	7,060.10	142.22	7,061.51	0.00	0.00	0.00
16,200.00	90.00	0.09	9,750.00	7,160.10	142.38	7,161.50	0.00	0.00	0.00
16,300.00	90.00	0.09	9,750.00	7,260.10	142.54	7,261.48	0.00	0.00	0.00
16,400.00	90.00	0.09	9,750.00	7,360.10	142.70	7,361.47	0.00	0.00	0.00
16,500.00	90.00	0.09	9,750.00	7,460.10	142.85	7,461.46	0.00	0.00	0.00
16,600.00	90.00	0.09	9,750.00	7,560.10	143.01	7,561.44	0.00	0.00	0.00
16,700.00	90.00	0.09	9,750.00	7,660.10	143.17	7,661.43	0.00	0.00	0.00
16,800.00	90.00	0.09	9,750.00	7,760.10	143.33	7,761.42	0.00	0.00	0.00
16,900.00	90.00	0.09	9,750.00	7,860.10	143.49	7,861.41	0.00	0.00	0.00
17,000.00	90.00	0.09	9,750.00	7,960.10	143.64	7,961.39	0.00	0.00	0.00
17,100.00	90.00	0.09	9,750.00	8,060.10	143.80	8,061.38	0.00	0.00	0.00
17,200.00	90.00	0.09	9,750.00	8,160.10	143.96	8,161.37	0.00	0.00	0.00
17,263.88	90.00	0.09	9,750.00	8,223.98	144.06	8,225.24	0.00	0.00	0.00
TD at 17263.88									

Design Targets									
Target Name	Dip Angle (°)	Dip Dir. (°)	TVD (usft)	+N/-S (usft)	+E/-W (usft)	Northing (usft)	Easting (usft)	Latitude	Longitude
DK 1 Fed Com 302H FT	0.00	0.00	0.00	504.74	131.86	486,418.47	823,657.34	32.333925	-103.419278
- hit/miss target									
- plan misses target center by 521.68usft at 0.00usft MD (0.00 TVD, 0.00 N, 0.00 E)									
- Point									
DK 1 Fed Com 302H PE	0.00	0.00	9,750.00	8,223.98	144.06	494,137.53	823,603.70	32.355142	-103.419238
- plan hits target center									
- Point									

Database:	EDM 5000.1 Single User Db	Local Co-ordinate Reference:	Well 302H
Company:	Centennial Resource Development, Inc.	TVD Reference:	RKB=25' @ 3390.00usft (H&P 650)
Project:	Lea Co., NM (NAD83)	MD Reference:	RKB=25' @ 3390.00usft (H&P 650)
Site:	Donkey Kong 1.Fed Com	North Reference:	True
Well:	302H	Survey Calculation Method:	Minimum Curvature
Wellbore:	OH		
Design:	Plan #1		

Plan Annotations				
Measured Depth (usft)	Vertical Depth (usft)	Local Coordinates		Comment
		+N/-S (usft)	+E/-W (usft)	
2,000.00	2,000.00	0.00	0.00	Build 1°/100'
3,000.08	2,995.01	84.23	22.00	2001' Hold
5,001.47	4,965.99	420.51	109.86	Drop 1°/100'
6,001.55	5,961.00	504.74	131.86	3216' Hold
9,217.59	9,177.04	504.74	131.86	Build 10°/100'
10,117.59	9,750.00	1,077.70	132.77	7146' Hold
17,263.88	9,750.00	8,223.98	144.06	TD at 17263.88