

District I  
1625 N. French Dr., Hobbs, NM 88240  
Phone: (575) 393-6161 Fax: (575) 393-0720  
District II  
811 S. First St., Artesia, NM 88210  
Phone: (575) 748-1283 Fax: (575) 748-9720  
District III  
1000 Rio Brazos Road, Artesia, NM 87410  
Phone: (505) 334-6178 Fax: (505) 334-6170  
District IV  
1220 S. St. Francis Dr., Santa Fe, NM 87505  
Phone: (505) 476-3460 Fax: (505) 476-3462

State of New Mexico  
Energy, Minerals & Natural Resources Department  
OIL CONSERVATION DIVISION  
1220 South St. Francis Dr.  
Santa Fe, NM 87505

Form C-102  
Revised August 1, 2011  
Submit one copy to appropriate  
District Office

☐ AMENDED REPORT

WELL LOCATION AND ACREAGE DEDICATION PLAT

<sup>1</sup> API Number 70-025-45678	<sup>2</sup> Pool Code 97293	<sup>3</sup> Pool Name Ojo Chisco; Bone Spring, South
<sup>4</sup> Property Code 32-5119	<sup>5</sup> Property Name DONKEY KONG 1 FED COM	<sup>6</sup> Well Number #501H
<sup>7</sup> GRID No. 372165	<sup>8</sup> Operator Name CENTENNIAL RESOURCE PRODUCTION, LLC	<sup>9</sup> Elevation 3364.7'

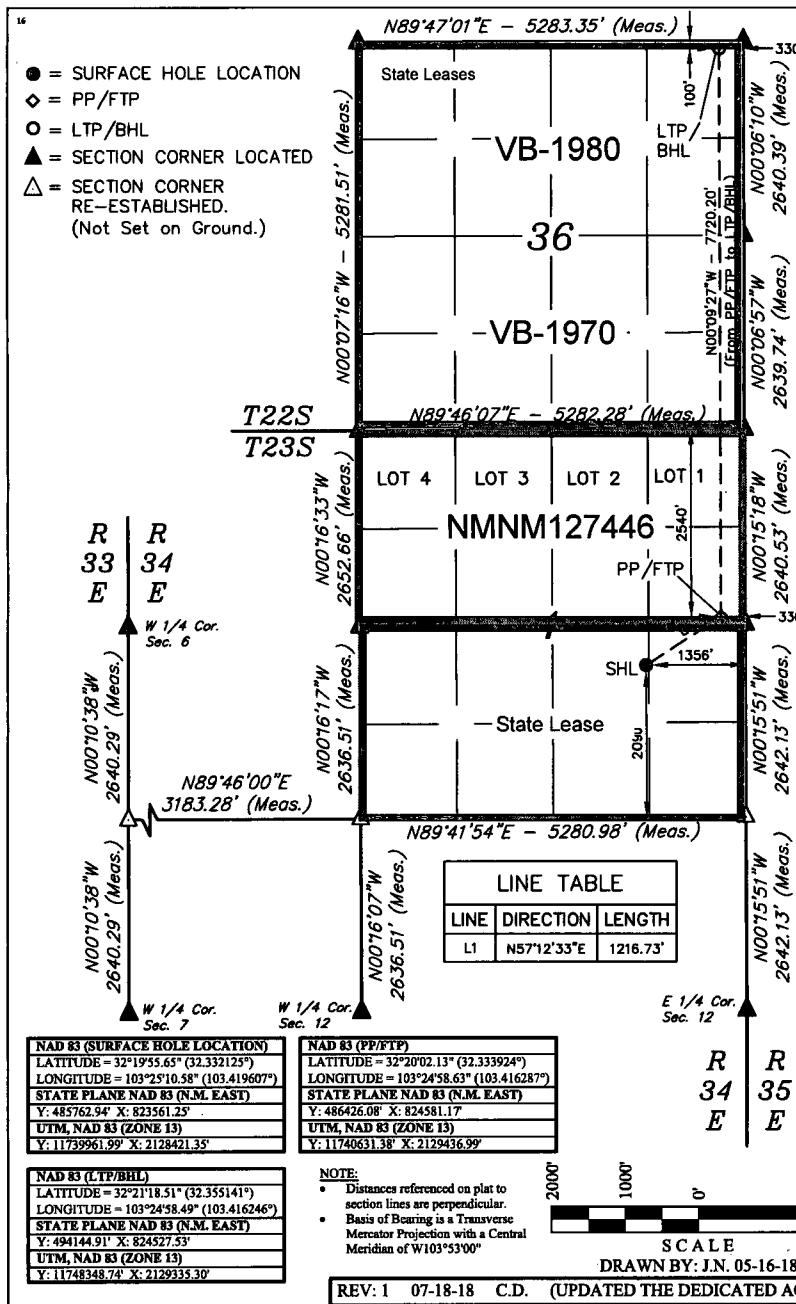
"Surface Location

UL or lot no.	Section	Township	Range	Lot Idn	Feet from the	North/South line	Feet from the	East/West line	County
J	1	23S	34E		2090	SOUTH	1356	EAST	LEA

"Bottom Hole Location If Different From Surface

UL or lot no.	Section	Township	Range	Lot Idn	Feet from the	North/South line	Feet from the	East/West line	County
A	36	22S	34E		100	NORTH	330	EAST	LEA
<sup>12</sup> Dedicated Acres 240.03	<sup>13</sup> Joint or Infill	<sup>14</sup> Consolidation Code	<sup>15</sup> Order No.						

No allowable will be assigned to this completion until all interests have been consolidated or a non-standard unit has been approved by the division.



"OPERATOR CERTIFICATION

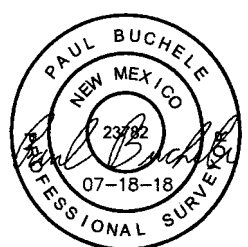
I hereby certify that the information contained herein is true and complete to the best of my knowledge and belief, and that this organization either owns a working interest or leased mineral interest in the land including the proposed bottom hole location or has a right to drill this well at this location pursuant to a contract with an owner of such a mineral or working interest, or to a voluntary pooling agreement or a compulsory pooling order heretofore entered by the division.

Signature \_\_\_\_\_ Date 9/17/18  
Kanicia Castillo  
Printed Name  
kanicia.castillo@cdevinc.com  
E-mail Address

"SURVEYOR CERTIFICATION

I hereby certify that the well location shown on this plat was plotted from field notes of actual surveys made by me or under my supervision, and that the same is true and correct to the best of my belief.

May 7, 2018  
Date of Survey  
Signature and Seal of Professional Surveyor:



Certificate Number:

District I  
1625 N. French Dr., Hobbs, NM 88240  
Phone: (575) 393-6161 Fax: (575) 393-0720  
District II  
811 S. First St., Artesia, NM 88210  
Phone: (575) 748-1283 Fax: (575) 748-9720  
District III  
1000 Rio Brazos Road, Aztec, NM 87410  
Phone: (505) 334-6178 Fax: (505) 334-6170  
District IV  
1220 S. St. Francis Dr., Santa Fe, NM 87505  
Phone: (505) 476-3460 Fax: (505) 476-3462

State of New Mexico  
Energy, Minerals & Natural Resources Department  
OIL CONSERVATION DIVISION  
1220 South St. Francis Dr.  
Santa Fe, NM 87505

Form C-102  
Revised August 1, 2011  
Submit one copy to appropriate  
District Office

☐ AMENDED REPORT

WELL LOCATION AND ACREAGE DEDICATION PLAT

1 API Number		2 Pool Code 97293		3 Pool Name Ojo Chisco; Bone Spring, South	
4 Property Code		5 Property Name DONKEY KONG I FED COM		6 Well Number #501H	
7 OGRID No. 372165		8 Operator Name CENTENNIAL RESOURCE PRODUCTION, LLC		9 Elevation 3364.7'	

10 Surface Location

UL or lot no.	Section	Township	Range	Lot Idn	Feet from the	North/South line	Feet from the	East/West line	County
J	I	23S	34E		2090	SOUTH	1356	EAST	LEA

11 Bottom Hole Location If Different From Surface

UL or lot no.	Section	Township	Range	Lot Idn	Feet from the	North/South line	Feet from the	East/West line	County
A	36	22S	34E		100	NORTH	330	EAST	LEA
12 Dedicated Acres 240.03		13 Joint or Infill		14 Consolidation Code		15 Order No.			

No allowable will be assigned to this completion until all interests have been consolidated or a non-standard unit has been approved by the division.

16

● = SURFACE HOLE LOCATION  
◆ = PP/FTP  
○ = LTP/BHL  
▲ = SECTION CORNER LOCATED  
△ = SECTION CORNER RE-ESTABLISHED.  
(Not Set on Ground.)

LINE TABLE		
LINE	DIRECTION	LENGTH
L1	N57°12'33"E	1216.73'

NAD 83 (SURFACE HOLE LOCATION)

LATITUDE = 32°19'55.65" (32.332125°)

LONGITUDE = 103°25'10.58" (103.419607°)

STATE PLANE NAD 83 (N.M. EAST)

Y: 485762.94' X: 823561.25'

UTM, NAD 83 (ZONE 13)

Y: 11739961.99' X: 2128421.35'

NAD 83 (PP/FTP)

LATITUDE = 32°20'02.13" (32.333924°)

LONGITUDE = 103°24'58.63" (103.416287°)

STATE PLANE NAD 83 (N.M. EAST)

Y: 486426.08' X: 824581.17'

UTM, NAD 83 (ZONE 13)

Y: 11740631.38' X: 2129436.99'

NAD 83 (LTP/BHL)

LATITUDE = 32°21'18.51" (32.355141°)

LONGITUDE = 103°24'58.49" (103.416246°)

STATE PLANE NAD 83 (N.M. EAST)

Y: 494144.91' X: 824527.53'

UTM, NAD 83 (ZONE 13)

Y: 11748348.74' X: 2129335.30'

NOTE:  
• Distances referenced on plat to section lines are perpendicular.  
• Basis of Bearing is a Transverse Mercator Projection with a Central Meridian of W103°53'00"

17 OPERATOR CERTIFICATION

I hereby certify that the information contained herein is true and complete to the best of my knowledge and belief, and that this organization either owns a working interest or unleased mineral interest in the land including the proposed bottom hole location or has a right to drill this well at this location pursuant to a contract with an owner of such a mineral or working interest, or to a voluntary pooling agreement or a compulsory pooling order heretofore entered by the division.

Signature: \_\_\_\_\_ Date: 9/17/18

Printed Name: Kanicia Castillo

E-mail Address: kanicia.castillo@cddevinc.com

18 SURVEYOR CERTIFICATION

I hereby certify that the well location shown on this plat was plotted from field notes of actual surveys made by me or under my supervision, and that the same is true and correct to the best of my belief.

May 7, 2018

Date of Survey

Signature and Seal of Professional Surveyor:

Certificate Number: \_\_\_\_\_

SCALE

DRAWN BY: J.N. 05-16-18

REV: 1 07-18-18 C.D. (UPDATED THE DEDICATED ACRES)