

District I  
1625 N. French Dr., Hobbs, NM 88240  
Phone: (505) 393-6161 Fax: (505) 393-0720  
District II  
811 S. First St., Artesia, NM 88210  
Phone: (505) 748-1283 Fax: (505) 748-9720  
District III  
1000 Rio Brazos Road, Aztec, NM 87410  
Phone: (505) 334-6178 Fax: (505) 334-6170  
District IV  
1220 S. St. Francis Dr., Sante Fe, NM 87505  
Phone: (505) 476-3460 Fax: (505) 476-3462

State of New Mexico  
Energy, Minerals & Natural Resources  
Department  
OIL CONSERVATION DIVISION  
1220 South St. Francis Dr.  
Sante Fe, NM 87505

FORM C-102

Revised August 1, 2011

Submit one copy to appropriate

District Office

RECEIVED

AMENDED REPORT

WELL LOCATION AND ACREAGE DEDICATION PLAT

<sup>1</sup> API Number <b>30-025-44837</b>	<sup>2</sup> Pool Code <b>2205</b>	<sup>3</sup> Pool Name <b>ANTELOPE RIDGE; Bone Spring, North</b>
<sup>4</sup> Property Code <b>321455</b>	<sup>5</sup> Property Name <b>FUNKY MONKS 8 FED COM</b>	
<sup>6</sup> Well Number <b>#601H</b>	<sup>7</sup> Elevation <b>3363'</b>	
<sup>8</sup> OGRID No. <b>7377</b>	<sup>9</sup> Operator Name <b>EOG RESOURCES, INC.</b>	

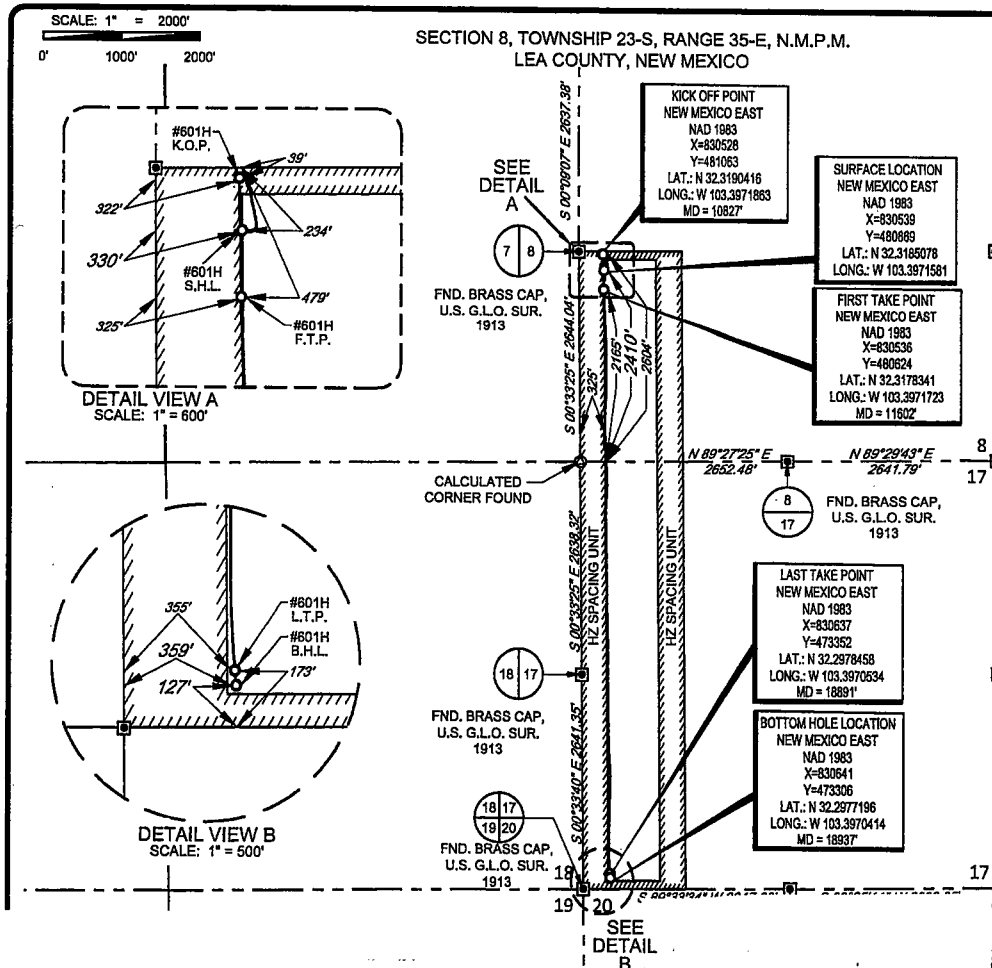
<sup>10</sup>Surface Location

UL or lot no.	Section	Township	Range	Lot Idn	Feet from the	North/South line	Feet from the	East/West line	County
<b>L</b>	<b>8</b>	<b>23-S</b>	<b>35-E</b>	<b>-</b>	<b>2410'</b>	<b>SOUTH</b>	<b>330'</b>	<b>WEST</b>	<b>LEA</b>

UL or lot no.	Section	Township	Range	Lot Idn	Feet from the	North/South line	Feet from the	East/West line	County
<b>M</b>	<b>17</b>	<b>23-S</b>	<b>35-E</b>	<b>-</b>	<b>127'</b>	<b>SOUTH</b>	<b>359'</b>	<b>WEST</b>	<b>LEA</b>

<sup>12</sup> Dedicated Acres	<sup>13</sup> Joint or Infill	<sup>14</sup> Consolidation Code	<sup>15</sup> Order No.
<b>240.00</b>			

No allowable will be assigned to this completion until all interests have been consolidated or a non-standard unit has been approved by the division.



<sup>17</sup>OPERATOR CERTIFICATION

I hereby certify that the information contained herein is true and complete to the best of my knowledge and belief, and that this organization either owns a working interest or unleased mineral interest in the land including the proposed bottom hole location or has a right to drill this well at this location pursuant to a contract with an owner of such a mineral or working interest, or to a voluntary pooling agreement or a compulsory pooling order heretofore entered by the division.

Signature: **Kay Maddox** Date: **2/26/2019**  
Printed Name: **KAY MADDOX**  
E-mail Address:

<sup>18</sup>SURVEYOR CERTIFICATION

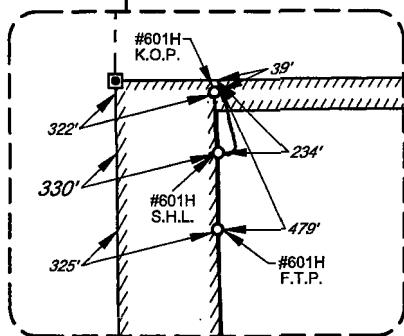
I hereby certify that the well location shown on this plat was plotted from field notes of actual surveys made by me or under my supervision, and that the same is true to the best of my belief.

Date of Survey: **02/26/2019**  
Signature: **Michael Brown**  
Professional Surveyor  
Certificate Number: **18329**

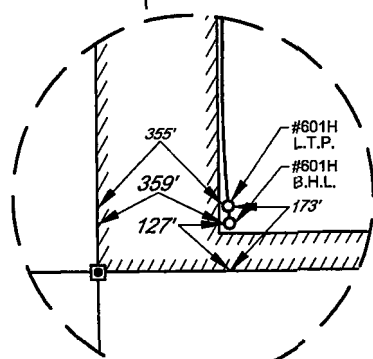
SCALE: 1" = 2000'

0' 1000' 2000'

SECTION 8, TOWNSHIP 23-S, RANGE 35-E, N.M.P.M.  
LEA COUNTY, NEW MEXICO



DETAIL VIEW A  
SCALE: 1" = 600'



DETAIL VIEW B  
SCALE: 1" = 500'

POINT	UTM ZONE 13 COORDINATES	
SHL	X=2135428.059	Y=11735111.809
KOP	X=2135416.453	Y=11735305.836
FTP	X=2135427.335	Y=11734866.700
LTP	X=2135572.831	Y=11727596.797
BHL	X=2135577.207	Y=11727550.948

FND. BRASS CAP,  
U.S. G.L.O. SUR.  
1913

FND. BRASS CAP,  
U.S. G.L.O. SUR.  
1913

FND. BRASS CAP,  
U.S. G.L.O. SUR.  
1913

KICK OFF POINT  
NEW MEXICO EAST  
NAD 1983  
X=830528  
Y=481063  
LAT.: N 32.3190416  
LONG.: W 103.3971863  
MD = 10827'

SURFACE LOCATION  
NEW MEXICO EAST  
NAD 1983  
X=830539  
Y=480869  
LAT.: N 32.3185078  
LONG.: W 103.3971581

FIRST TAKE POINT  
NEW MEXICO EAST  
NAD 1983  
X=830536  
Y=480824  
LAT.: N 32.3178341  
LONG.: W 103.3971723  
MD = 11602'

LAST TAKE POINT  
NEW MEXICO EAST  
NAD 1983  
X=830637  
Y=473352  
LAT.: N 32.2978458  
LONG.: W 103.3970534  
MD = 18891'

BOTTOM HOLE LOCATION  
NEW MEXICO EAST  
NAD 1983  
X=830641  
Y=473306  
LAT.: N 32.2977196  
LONG.: W 103.3970414  
MD = 18937'

FND. BRASS CAP,  
U.S. G.L.O. SUR.  
1913

FND. BRASS CAP,  
U.S. G.L.O. SUR.  
1913

FND. BRASS CAP,  
U.S. G.L.O. SUR.  
1913

FND. BRASS CAP,  
U.S. G.L.O. SUR.  
1913

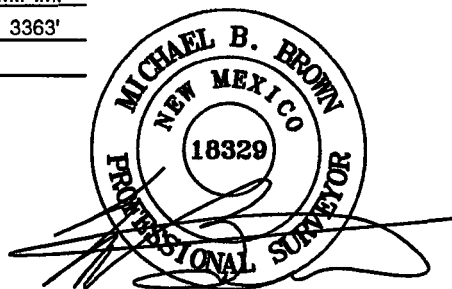
FND. BRASS CAP,  
U.S. G.L.O. SUR.  
1913

LEASE NAME & WELL NO.: FUNKY MONKS 8 FED COM #601H  
SECTION 8 TWP 23-S RGE 35-E SURVEY N.M.P.M.  
COUNTY LEA STATE NM ELEVATION 3363'  
DESCRIPTION 2410' FSL & 330' FWL



**TOPOGRAPHIC**  
LOYALTY INNOVATION LEGACY

1400 EVERMAN PARKWAY, Ste. 146 • FT. WORTH, TEXAS 76140  
TELEPHONE: (817) 744-7512 • FAX (817) 744-7554  
2903 NORTH BIG SPRING • MIDLAND, TEXAS 79705  
TELEPHONE: (432) 682-1653 OR (800) 767-1653 • FAX (432) 682-1743  
WWW.TOPOGRAPHIC.COM



Michael Blake Brown, P.S. No. 18329

NOVEMBER 14, 2018

NOTES:

1. ORIGINAL DOCUMENT SIZE: 8.5" X 11"
2. ALL BEARINGS, DISTANCES, AND COORDINATE VALUES CONTAINED HEREIN ARE GRID BASED UPON THE NEW MEXICO COORDINATE SYSTEM OF 1983, EAST ZONE, U.S. SURVEY FEET.
3. THIS WELL LOCATION SHOWN HEREON HAS BEEN SURVEYED ON THE GROUND UNDER MY SUPERVISION AND PREPARED ACCORDING TO THE EVIDENCE FOUND AT THE TIME OF SURVEY, AND DATA PROVIDED BY EOG RESOURCES, INC. THIS CERTIFICATION IS MADE AND LIMITED TO THOSE PERSONS OR ENTITIES SHOWN ON THE FACE OF THIS PLAT AND IS NON-TRANSFERABLE. THIS SURVEY IS CERTIFIED FOR THIS TRANSACTION ONLY.

FUNKY MONKS 8  
FED COM #601H  
AS completed

REVISION:

DATE: 02/06/2019

FILE: AD\_FUNKY\_MONKS\_8\_FED\_COM\_601H

DRAWN BY: H.B.

SHEET: 1 OF 1