

District I
1625 N. French Dr., Hobbs, NM 88240
Phone: (575) 393-6161 Fax: (575) 393-0720
District II
811 S. First St., Artesia, NM 88210
Phone: (575) 748-1283 Fax: (575) 748-9720
District III
1000 Rio Brazos Road, Aztec, NM 87410
Phone: (505) 334-6178 Fax: (505) 334-6170
District IV
1220 S. St. Francis Dr., Santa Fe, NM 87505
Phone: (505) 476-3460 Fax: (505) 476-3462

State of New Mexico
Energy, Minerals & Natural Resources Department
HOBBS OCD
OIL CONSERVATION DIVISION
1220 South St. Francis Dr.
Santa Fe, NM 87505

Form C-102
Revised August 1, 2011
Submit one copy to appropriate
District Office

MAR 05 2019

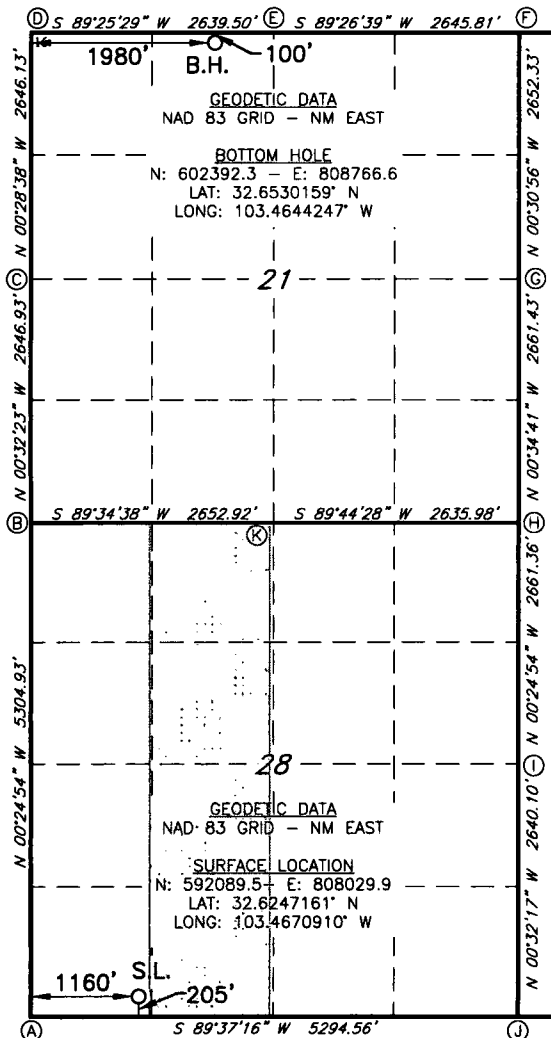
RECEIVED

☐ AMENDED REPORT

WELL LOCATION AND ACREAGE DEDICATION PLAT

¹ API Number 30-025-45688		² Pool Code 96989		³ Pool Name KLEIN RANCH; WOLFCAMP					
⁴ Property Code 325115		⁵ Property Name CHAROLAIS 28/21 WINC STATE COM						⁶ Well Number 1H	
⁷ GRID NO. 14744		⁸ Operator Name MEWBOURNE OIL COMPANY						⁹ Elevation 3721'	
¹⁰ Surface Location									
UL or lot no. M	Section 28	Township 19S	Range 35E	Lot Idn	Feet from the 205	North/South line SOUTH	Feet From the 1160	East/West line WEST	County LEA
¹¹ Bottom Hole Location If Different From Surface									
UL or lot no. C	Section 21	Township 19S	Range 35E	Lot Idn	Feet from the 100	North/South line NORTH	Feet from the 1980	East/West line WEST	County LEA
¹² Dedicated Acres 160		¹³ Joint or Infill		¹⁴ Consolidation Code		¹⁵ Order No.			

No allowable will be assigned to this completion until all interest have been consolidated or a non-standard unit has been approved by the division.



¹⁷ OPERATOR CERTIFICATION

I hereby certify that the information contained herein is true and complete to the best of my knowledge and belief, and that this organization either owns a working interest or unleased mineral interest in the land including the proposed bottom hole location or has a right to drill this well at this location pursuant to a contract with an owner of such a mineral or working interest, or to a voluntary pooling agreement or a compulsory pooling order heretofore entered by the division.

Signature: *Bradley Bishop* Date: **3-5-19**

Printed Name: **BRADLEY BISHOP**

E-mail Address: **BBISHOP@MEWBOURNE.COM**

¹⁸ SURVEYOR CERTIFICATION

I hereby certify that the well location shown on this plat was plotted from field notes of actual surveys made by me or under my supervision, and that the same is true and correct to the best of my belief.

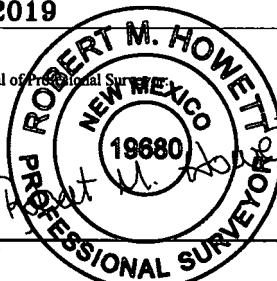
2-27-2019

Date of Survey

Signature and Seal of Professional Surveyor

19680

Certificate Number



LS19020241