

District I
1625 N. French Dr., Hobbs, NM 88240
Phone: (575) 393-6161 Fax: (575) 393-0720
District II
811 S. First St., Artesia, NM 88210
Phone: (575) 748-1283 Fax: (575) 748-9720
District III
1000 Rio Brazos Road, Aztec, NM 87410
Phone: (505) 334-6178 Fax: (505) 334-6170
District IV
1220 S. St. Francis Dr., Sante Fe, NM 87505
Phone: (505) 476-3460 Fax: (505) 476-3462

State of New Mexico
Energy, Minerals & Natural Resources
Department
OIL CONSERVATION DIVISION
1220 South St. Francis Dr.
Sante Fe, NM 87505

FORM C-102

Revised August 1, 2011

Submit one copy to appropriate

District Office

☐ AMENDED REPORT

WELL LOCATION AND ACREAGE DEDICATION PLAT

| | | |
|---|---|---|
| ¹ API Number 30-025- 44623 | ² Pool Code 96434 | ³ Pool Name Red Hills; Bone Spring, North |
| ⁴ Property Code 40398 | ⁵ Property Name JOLLY ROGER 16 STATE | ⁶ Well Number #303H |
| ⁷ OGRID No. 7377 | ⁸ Operator Name EOG RESOURCES, INC. | ⁹ Elevation 3554' |

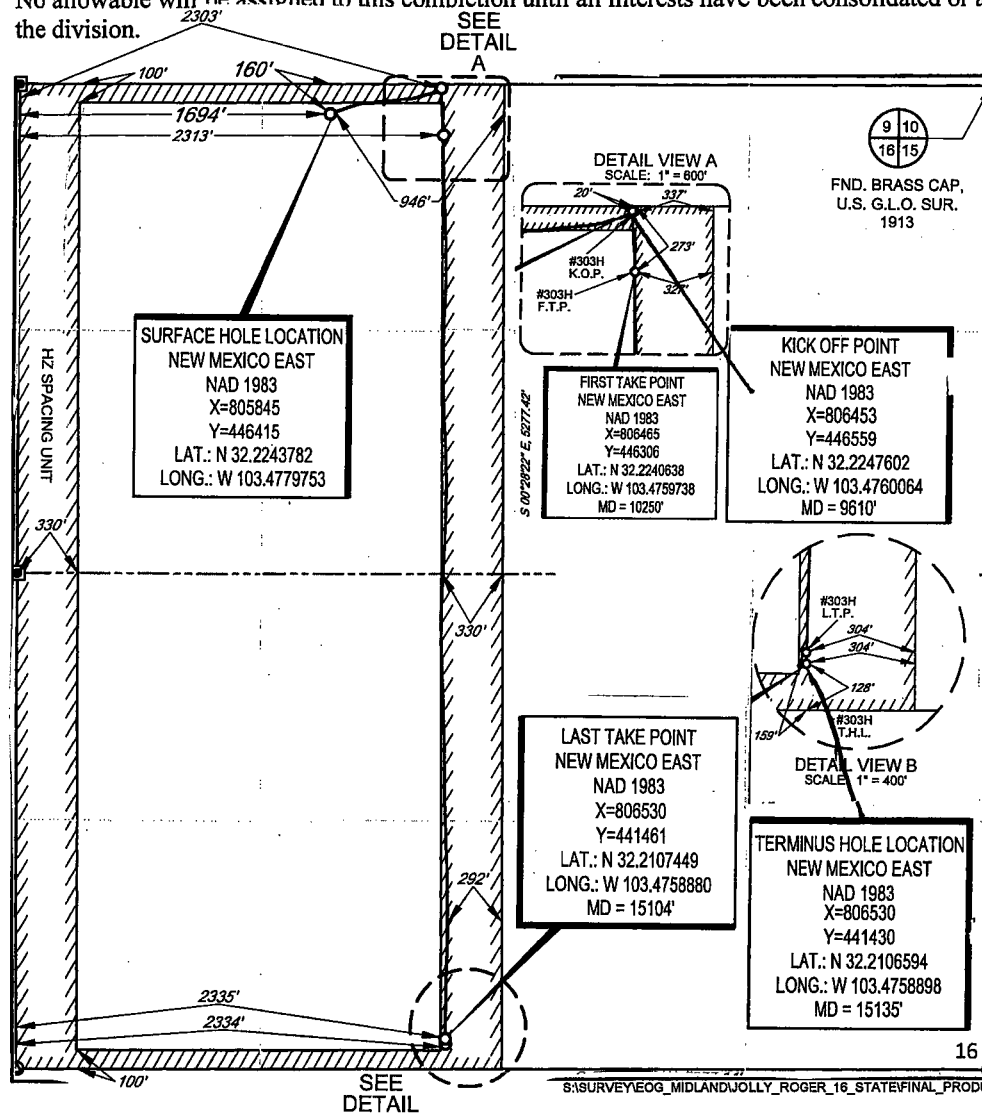
¹⁰Surface Location

| UL or lot no. | Section | Township | Range | Lot Idn | Feet from the | North/South line | Feet from the | East/West line | County |
|---------------|---------|----------|-------|---------|---------------|------------------|---------------|----------------|--------|
| C | 16 | 24-S | 34-E | - | 160' | NORTH | 1694' | WEST | LEA |

| UL or lot no. | Section | Township | Range | Lot Idn | Feet from the | North/South line | Feet from the | East/West line | County |
|---------------|---------|----------|-------|---------|---------------|------------------|---------------|----------------|--------|
| N | 16 | 24-S | 34-E | - | 128' | SOUTH | 2334' | WEST | LEA |

| | | | |
|---|-------------------------------|----------------------------------|-------------------------|
| ¹² Dedicated Acres 320 | ¹³ Joint or Infill | ¹⁴ Consolidation Code | ¹⁵ Order No. |
|---|-------------------------------|----------------------------------|-------------------------|

No allowable will be assigned to this completion until all interests have been consolidated or a non-standard unit has been approved by the division.



¹⁷OPERATOR CERTIFICATION

I hereby certify that the information contained herein is true and complete to the best of my knowledge and belief, and that this organization either owns a working interest or unleased mineral interest in the land including the proposed bottom hole location or has a right to drill this well at this location pursuant to a contract with an owner of such a mineral or working interest, or to a voluntary pooling agreement or a compulsory pooling order heretofore entered by the division.

Kay Maddox 3/11/19
Signature Date

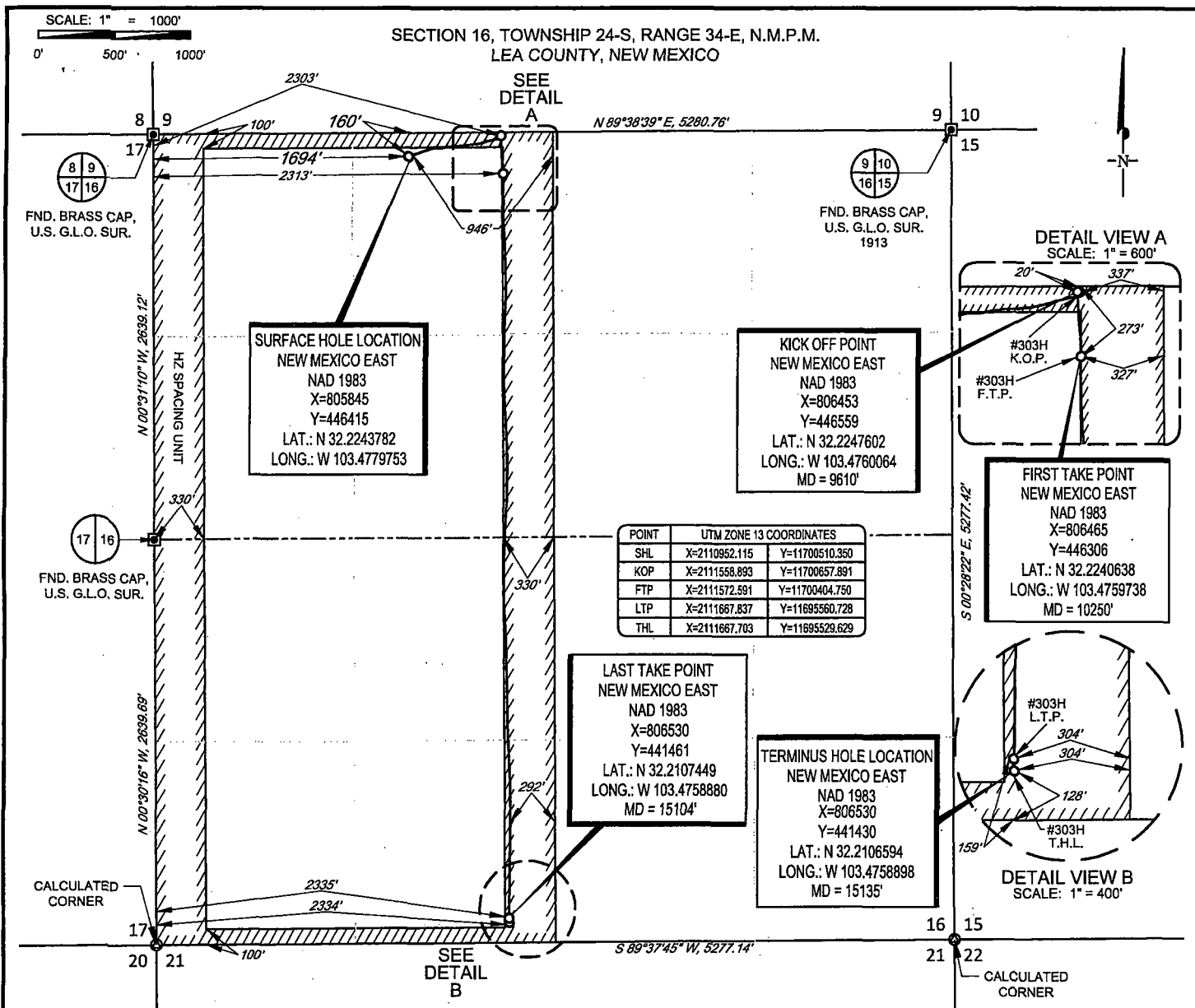
KAY MADDOX
Printed Name

E-mail Address

¹⁸SURVEYOR CERTIFICATION

I hereby certify that the well location shown on this plat was plotted from field notes of actual surveys made by me or under my supervision, and that the same is true to the best of my belief.

02/10/2018
Date of Survey
Signature and Seal of Professional Surveyor
NEW MEXICO
18329
PROFESSIONAL SURVEYOR
Certificate Number



LEASE NAME & WELL NO.: JOLLY ROGER 16 STATE #303H

SECTION 16 TWP 24-S RGE 34-E SURVEY N.M.P.M.

COUNTY LEA STATE NM ELEVATION 3554'

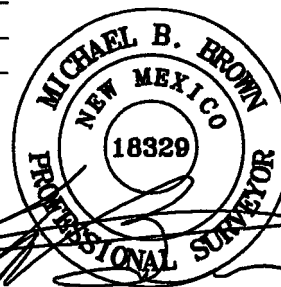
DESCRIPTION 160' FNL & 1694' FWL



TOPOGRAPHIC
LOYALTY INNOVATION LEGACY

1400 EVERMAN PARKWAY, Ste. 146 • FT. WORTH, TEXAS 76140
TELEPHONE: (817) 744-7512 • FAX: (817) 744-7554
2903 NORTH BIG SPRING • MIDLAND, TEXAS 79705
TELEPHONE: (432) 682-1653 OR (800) 767-1653 • FAX: (432) 682-1743
WWW.TOPOGRAPHIC.COM

EOG resources, Inc.



Michael Blake Brown, P.S. No. 18329
FEBRUARY 27, 2019

| JOLLY ROGER 16 STATE #303H AS-COMPLETED | REVISION: | NOTES: |
|---|-----------|--|
| DATE: 02/27/2019 | | 1. ORIGINAL DOCUMENT SIZE: 8.5" X 11" |
| FILE: AD_JOLLY_ROGER_16_STATE_303H | | 2. ALL BEARINGS, DISTANCES, AND COORDINATE VALUES CONTAINED HEREIN ARE GRID BASED UPON THE NEW MEXICO COORDINATE SYSTEM OF 1983, EAST ZONE, U.S. SURVEY FEET. |
| DRAWN BY: JLS | | 3. THIS WELL LOCATION SHOWN HEREON HAS BEEN SURVEYED ON THE GROUND UNDER MY SUPERVISION AND PREPARED ACCORDING TO THE EVIDENCE FOUND AT THE TIME OF SURVEY, AND DATA PROVIDED BY EOG RESOURCES, INC. THIS CERTIFICATION IS MADE AND LIMITED TO THOSE PERSONS OR ENTITIES SHOWN ON THE FACE OF THIS PLAT AND IS NON-TRANSFERABLE. THIS SURVEY IS CERTIFIED FOR THIS TRANSACTION ONLY. |
| SHEET: 1 OF 1 | | |