

District I  
1625 N. French Dr., Hobbs, NM 88240  
Phone: (575) 393-6161 Fax: (575) 393-0720  
District II  
811 S. First St., Artesia, NM 88210  
Phone: (575) 748-1283 Fax: (575) 748-9720  
District III  
1000 Rjo Brazos Road, Aztec, NM 87410  
Phone: (505) 334-6178 Fax: (505) 334-6170  
District IV  
1220 S. St. Francis Dr., Santa Fe, NM 87505  
Phone: (505) 476-3460 Fax: (505) 476-3462

State of New Mexico  
Energy, Minerals & Natural Resources  
Department  
OIL CONSERVATION DIVISION  
1220 South St. Francis Dr.  
Santa Fe, NM 87505

FORM C-102  
Revised August 1, 2011  
Submit one copy to appropriate  
District Office

☐ AMENDED REPORT

WELL LOCATION AND ACREAGE DEDICATION PLAT

<sup>1</sup> API Number 30-025-45672	<sup>2</sup> Pool Code 97964	<sup>3</sup> Pool Name WC-025 G-07 S243225C; LWR BONE SPRING
<sup>4</sup> Property Code 321651	<sup>5</sup> Property Name SAVAGE 2 STATE COM	
<sup>6</sup> Well Number 503H	<sup>7</sup> Operator Name EOG RESOURCES, INC.	
<sup>8</sup> OGRID No. 7377	<sup>9</sup> Elevation 3520'	

<sup>10</sup>Surface Location

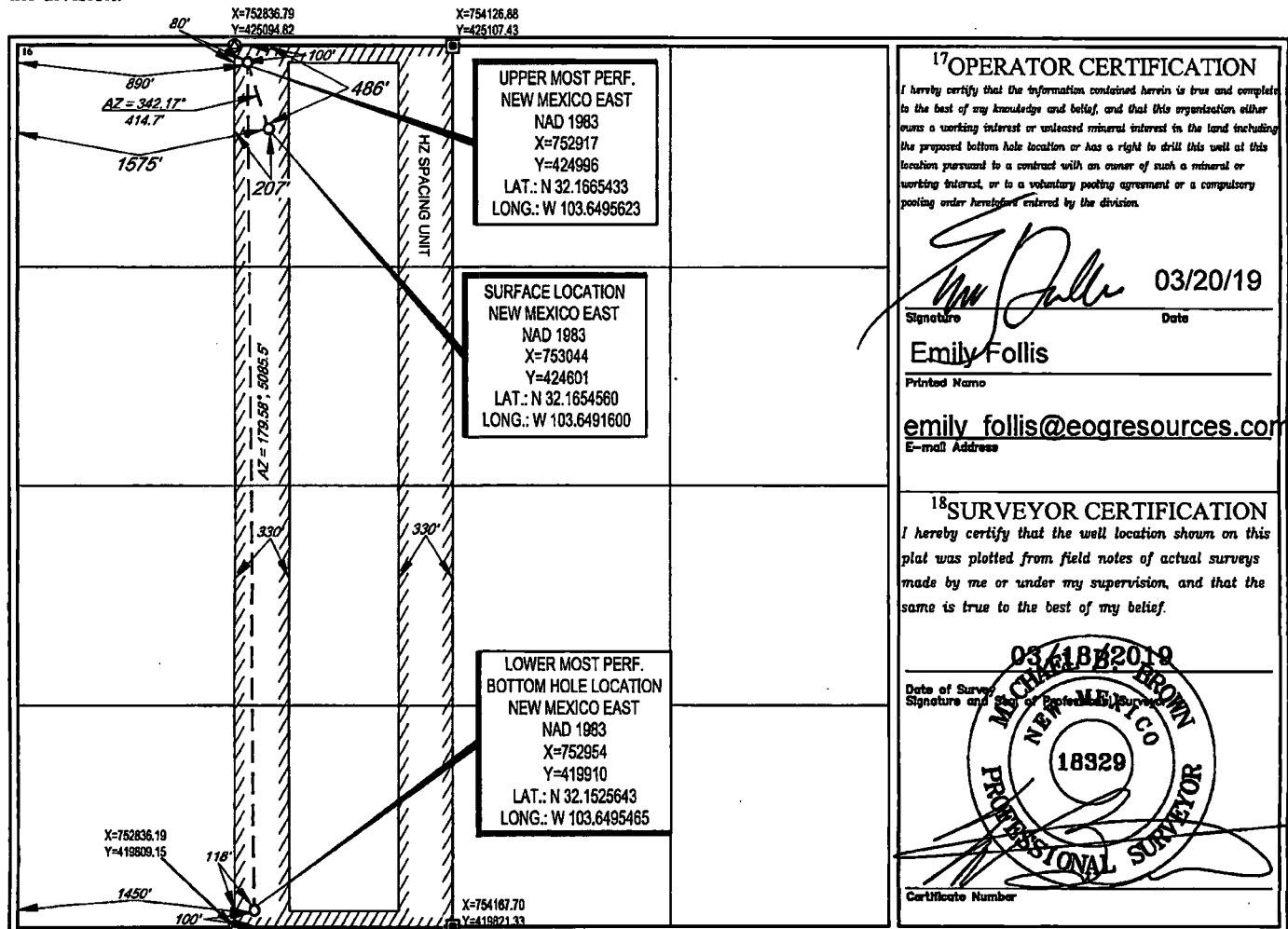
UL or lot no. 3C	Section 2	Township 25-S	Range 32-E	Lot Idn 3	Feet from the 496'	North/South line NORTH	Feet from the 1575'	East/West line WEST	County LEA
---------------------	--------------	------------------	---------------	--------------	-----------------------	---------------------------	------------------------	------------------------	---------------

<sup>11</sup>Bottom Hole Location If Different From Surface

UL or lot no. N	Section 2	Township 25-S	Range 32-E	Lot Idn -	Feet from the 100'	North/South line SOUTH	Feet from the 1450'	East/West line WEST	County LEA
--------------------	--------------	------------------	---------------	--------------	-----------------------	---------------------------	------------------------	------------------------	---------------

<sup>12</sup> Dedicated Acres 160.19	<sup>13</sup> Joint or Infill	<sup>14</sup> Consolidation Code	<sup>15</sup> Order No.
---	-------------------------------	----------------------------------	-------------------------

No allowable will be assigned to this completion until all interests have been consolidated or a non-standard unit has been approved by the division.



<sup>17</sup>OPERATOR CERTIFICATION

I hereby certify that the information contained herein is true and complete to the best of my knowledge and belief, and that this organization either owns a working interest or unleased mineral interest in the land including the proposed bottom hole location or has a right to drill this well at this location pursuant to a contract with an owner of such a mineral or working interest, or to a voluntary pooling agreement or a compulsory pooling order heretofore entered by the division.

Signature: *Emily Follis* Date: 03/20/19  
Printed Name: Emily Follis  
E-mail Address: emily.follis@eogresources.com

<sup>18</sup>SURVEYOR CERTIFICATION

I hereby certify that the well location shown on this plat was plotted from field notes of actual surveys made by me or under my supervision, and that the same is true to the best of my belief.

Date of Survey: 03/18/2019  
Signature and Seal of Professional Surveyor: *Michael Brown*  
Certificate Number: 18329