

Submit 1 Copy To Appropriate District Office
District I - (575) 393-6161
1625 N. French Dr., Hobbs, NM 88240
District II - (575) 748-1283
811 S. First St., Artesia, NM 88210
District III - (505) 334-6178
1000 Rio Brazos Rd., Aztec, NM 87410
District IV - (505) 476-3460
1220 S. St. Francis Dr., Santa Fe, NM 87505

State of New Mexico
Energy, Minerals and Natural Resources

OIL CONSERVATION DIVISION
1220 South St. Francis Dr.
Santa Fe, NM 87505

Form C-103
Revised August 1, 2011

WELL ARI NO.
30-02525812

Indicate Type of Lease
STATE ☒ FEE ☐

6. State Oil & Gas Lease No.

7. Lease Name or Unit Agreement Name

Central Vacuum Unit

8. Well Number: 15

9. OGRID Number
4323

10. Pool name or Wildcat
Vacuum, Grayburg-San Andres

SUNDRY NOTICES AND REPORTS ON WELLS
(DO NOT USE THIS FORM FOR PROPOSALS TO DRILL OR TO DEEPEN OR PLUG BACK TO A DIFFERENT RESERVOIR. USE "APPLICATION FOR PERMIT" (FORM C-101) FOR SUCH PROPOSALS.)

1. Type of Well: Oil Well ☒ Gas Well ☐ Other ☐

2. Name of Operator
Chevron USA, Inc.

3. Address of Operator
6301 Deauville Blvd., Midland, TX 79706

4. Well Location

Unit Letter F : 2630 feet from the NORTH line and 2560 feet from the WEST line
Section 30 Township 17S Range 35E NMPM County Lea

11. Elevation (Show whether DR, RKB, RT, GR, etc.)
3984' GL

12. Check Appropriate Box to Indicate Nature of Notice, Report or Other Data

NOTICE OF INTENTION TO

PERFORM REMEDIAL WORK ☐ PLUG AND ABANDON ☒
TEMPORARILY ABANDON ☐ CHANGE PLANS ☐
PULL OR ALTER CASING ☐ MULTIPLE COMPL ☐
DOWNHOLE COMMINGLE ☐

OTHER: ☐

SUBSEQUENT REPORT OF:

REMEDIAL WORK ☐ ALTERING CASING ☐
COMMENCE DRILLING OPNS. ☐ P AND A ☐
CASING/CEMENT JOB ☐

OTHER: ☐

13. Describe proposed or completed operations. (Clearly state all pertinent details, and give pertinent dates, including estimated date of starting any proposed work). SEE RULE 19.15.7.14 NMAC. For Multiple Completions: Attach wellbore diagram of proposed completion or recompletion. 8 5/8" 24# @ 408': TOC @ surface; 4 1/2" 10.5# @ 4813': TOC @ surface

Chevron USA INC respectfully requests to abandon this well as follows:

1. MIRU, NU BOP, pull tubing
2. Set CIBP @ 4400', circulate well with fresh water, test casing to 500 psi for 10 minutes - if pressure test passes, spot MLF
3. Spot 55 sx CL C cement f/ 4400' t/ 3651' (Perfs, Grayburg, Queen). If pressure test passed in Step 2, do not WOC & tag. If pressure test failed in Step 2, WOC, tag, pressure test to 500 psi for 10 minutes - if pressure test passes, spot MLF; if pressure test fails, contact engineer
4. Spot 45 sx CL C cement f/ 3231' t/ 2655' (7 Rivers, Yates, Tansil)
5. Spot 50 sx CL C cement f/ 1755' t/ 1119' (Salt, Casing Leaks)
6. Spot 50 sx CL C cement f/ 655' t/ surface (Casing Leaks, Shoe, Fresh Water)
7. Verify TOC @ surface, RDMO, and turn over to site reclamation

I hereby certify that the information above is true and complete to the best of my knowledge and belief.

4/3/2019

X Nick Glann

Nick Glann
P&A Engineer/Project Manager

SIGNATURE Signed by: Nick Glann

E-mail address: nglann@chevron.com PHONE: 432-687-7786

For State Use Only

APPROVED BY:

Kerry Foster

TITLE

Compliance Officer A

DATE

4-3-19

Conditions of Approval (if any):

See Attached
Conditions of Approval

CVU 15 CURRENT WELLBORE DIAGRAM

Created: 11/07/12 By: Chay
 Updated: By:
 Lease: Central Vacuum Unit
 Field: Vacuum Grayburg San Andres
 Surf. Loc.: 2630' FNL & 2560' FWL
 Bot. Loc.:
 County: Lea St.: NM
 Status: Active Injection

Well #: 15 St. Lse:
 API: 30-025-25812
 Unit Ltr.: F Section: 30
 TSHP/Rng: T17S / R35E
 Unit Ltr.: F Section: 30
 TSHP/Rng: T17S / R35E
 Directions: Buckeye Townsite
 Chevno: EQ0045

Surface Casing

Size: 8-5/8", K-55
 Wt., Grd.: 24#
 Depth: 408'
 Sxs Cmt: 425 sxs
 Circulate: Yes
 TOC: Surface
 Hole Size: 12-1/4"

Sqz csg lks @ 173-605' w/51sx

Sqz csg lks @ 500-1300' w/50sx

Production Casing

Size: 4-1/2", K-55
 Wt., Grd.: 10.5#
 Depth: 4813'
 Sxs Cmt: 2100 sxs
 Circulate: Yes
 TOC: Surface
 Hole Size: 7-7/8"

KB: 3996'
 DF:
 GL: 3984'
 Ini. Spud: 03/17/78
 Ini. Comp.: 04/28/78

History

Completion: Acdz w/6000 gals 15% NE. Ran 2-3/8" OD plastic coated tbq, set @ 4435'. Wtr Inj began: 12/12/78.

8/18/93: Add'd perfs, 4425' - 4789', acdz w/5000 gals 20% NE, Pkr @ 4380'. Tst, RTI.

9/8/93: 2-3/8" tbq, EOT @ 4385', set 4.5" AD-1 Pkr @ 4388'.

3/5/10: Coil tbq cleanout and acid wash. Unable to wash past 4394'. Bullhead 3378 gals 15% HCl f/ end of coil.

8/12/02: Sqz csg Lk @ 1300'-500', w/50 sxs. Sqz csg Lk @ 605' - 173', w/51 sxs. DO cmt, Tst.

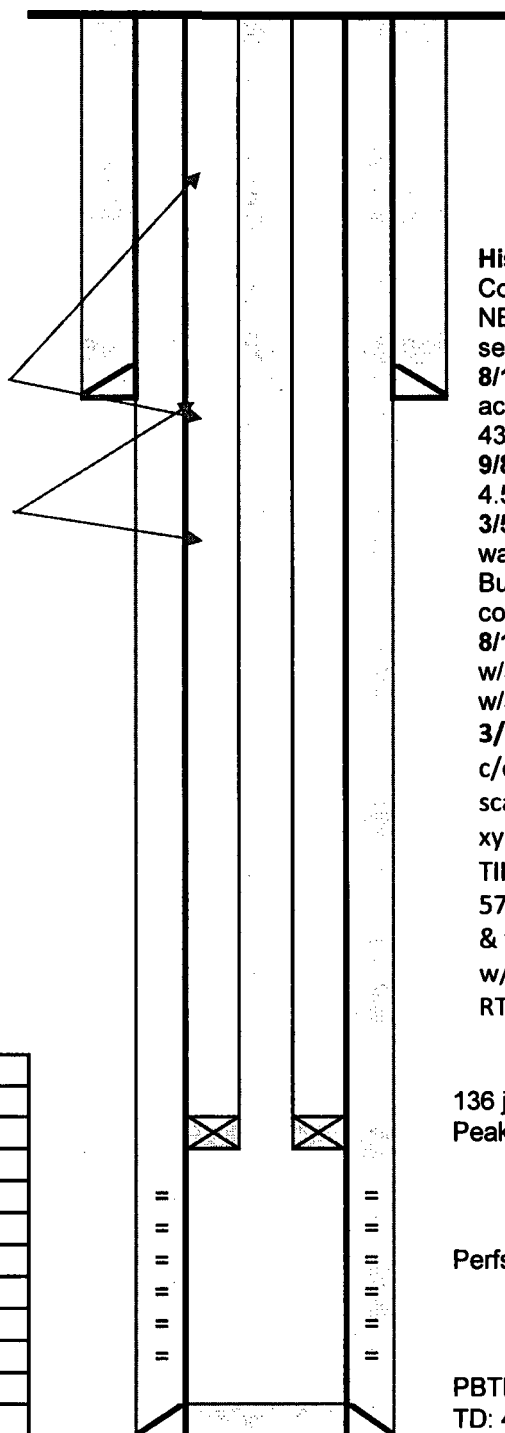
3/7/13: Cleanout. Tag fill @ 4364', c/o to 4810' PBDT (iron sulfide & scale). Set pkr, pump 1000 gals xylene & 10,000 gals 15% HCl w/RS. TIH w/RBP & pkr; found lks f/ 641-579' & sqz 'd w/ 5bbls cmt slurry - d/o & tst ok. Found lks f/ 516-06' & sqz 'd w/ 4bbls cmt slurry - d/o & tst ok. RTI.

136 jts 2-3/8" TK-99 IPC Tubing
 Peak AS-1X Packer @ 4346'

Perfs: 4425' - 4789'

PBDT: 4810'
 TD: 4813'

Formation Tops	
Santa Rosa	1219
Tecovas	1457
Dewey Lake	1525
Rustler	1580
Salt	1705
Tansil	2755
Yates	2858
Seven Rivers	3181
Queen	3751
Grayburg	4095
San Andres	4425



CVU 15 PROPOSED WELLBORE DIAGRAM

Created: 11/07/12 By: Chay
 Updated: By:
 Lease: Central Vacuum Unit
 Field: Vacuum Grayburg San Andres
 Surf. Loc.: 2630' FNL & 2560' FWL
 Bot. Loc.:
 County: Lea St.: NM
 Status: Active Injection

Well #: 15 St. Lse:
 API: 30-025-25812
 Unit Ltr.: F Section: 30
 TSHP/Rng: T17S / R35E
 Unit Ltr.: F Section: 30
 TSHP/Rng: T17S / R35E
 Directions: Buckeye Townsite
 Chevno: EQ0045

Surface Casing

Size: 8-5/8", K-55
 Wt., Grd.: 24#
 Depth: 408'
 Sxs Cmt: 425 sxs
 Circulate: Yes
 TOC: Surface
 Hole Size: 12-1/4"

Sqz csg lks @ 173-605' w/51sx

Sqz csg lks @ 500-1300' w/50sx

Production Casing

Size: 4-1/2", K-55
 Wt., Grd.: 10.5#
 Depth: 4813'
 Sxs Cmt: 2100 sxs
 Circulate: Yes
 TOC: Surface
 Hole Size: 7-7/8"

KB: 3996'
 DF:
 GL: 3984'
 Ini. Spud: 03/17/78
 Ini. Comp.: 04/28/78

Spot 50 sx CL C cmt g/ 655' t/ surface
(Casing leaks, Shoe, Fresh Water)

Spot 50 sx CL C cmt f/ 1755' t/ 1119'
(Salt, Casing Leaks)

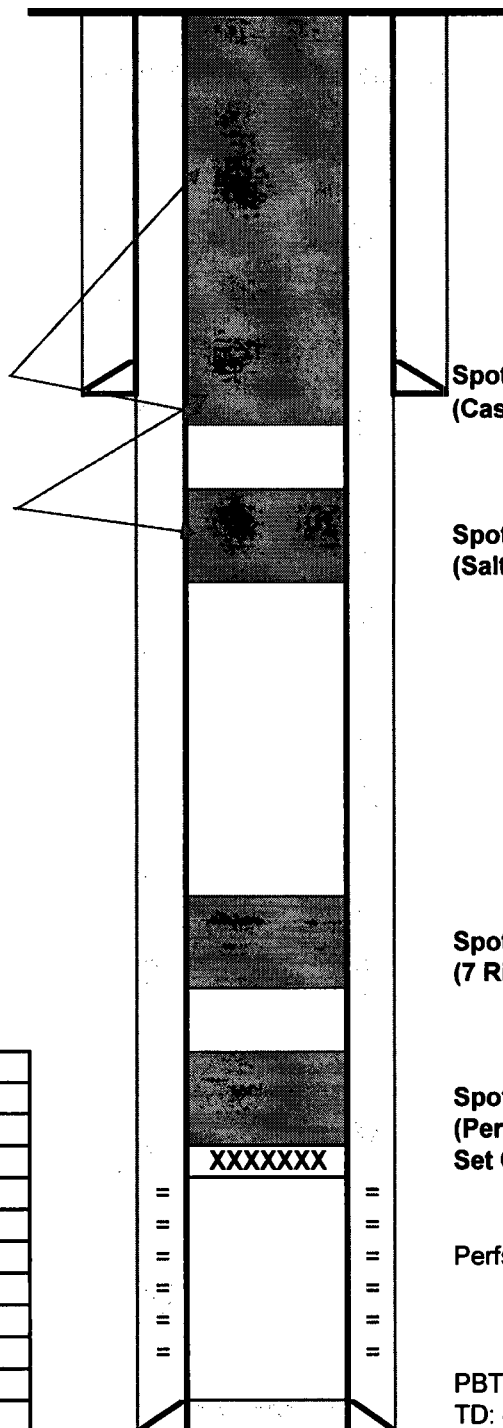
Spot 45 sx CL C cmt f/ 3231' t/ 2655'
(7 Rivers, Yates, Tansil)

Spot 55 sx CL C cmt f/ 4400' t/ 3651'
(Perfs, Grayburg, Queen)
Set CIBP @ 4400'

Perfs: 4425' - 4789'

PBTD: 4810'
TD: 4813'

Formation Tops	
Santa Rosa	1219
Tecovas	1457
Dewey Lake	1525
Rustler	1580
Salt	1705
Tansil	2755
Yates	2858
Seven Rivers	3181
Queen	3751
Grayburg	4095
San Andres	4425



GENERAL CONDITIONS OF APPROVAL:

- 1) Insure all bradenheads have been exposed, identified, and valves are operational prior to rigging up on well.
- 2) Contact the appropriate NMOCD District Office no later than 24 hours prior to moving in and rigging up.
- 3) A copy of the approved C103 intent to P&A should be distributed to the onsite company and plugging representatives. Approved procedures are good for a period of one year from approved date, unless otherwise specified on the C103 intent. Approvals past this date will require the submission and approval of a new C103 intent.
- 4) A company representative is required to be present to witness all operations including setting CIBP's, circulation of mud laden fluids, perforating, squeezing or spotting cement plugs, tags, or any other operations approved on the C103 intent to P&A. Company representative should contact the NMOCD and report all operations.
- 5) Any changes that may be required during plugging operations should be approved by the NMOCD before proceeding.
- 6) A closed loop system is to be used for all plugging operations. Contents of the steel pits to be hauled to a NMOCD permitted disposal facility.
- 7) Mud laden fluids must be placed between all cement plugs mixed at 25 sacks of salt gel per 100 barrels of brine.
- 8) All cement plugs will be 100' or 25 sacks cement, whichever is greater. Class 'C' cement will be used above 7500' and Class 'H' below 7500'. Plugs should be no more than 3000' apart
- 9) Site remediation due within one year of well plugging completion.