

Submit 1 Copy To Appropriate District Office

District I - (575) 393-6161  
1625 N. French Dr., Hobbs, NM 88240  
District II - (575) 748-1283  
811 S. First St., Artesia, NM 88210  
District III - (505) 334-6178  
1000 Rio Brazos Rd., Aztec, NM 87410  
District IV - (505) 476-3460  
1220 S. St. Francis Dr., Santa Fe, NM 87505

State of New Mexico  
Energy, Minerals and Natural Resources

OIL CONSERVATION DIVISION  
1220 South St. Francis Dr.  
Santa Fe, NM 87505

Form C-103  
Revised August 1, 2011

<b>SUNDRY NOTICES AND REPORTS ON WELLS</b> (DO NOT USE THIS FORM FOR PROPOSALS TO DRILL OR TO DEEPEN OR PLUG BACK TO DIFFERENT RESERVOIR. USE "APPLICATION FOR PERMIT" (FORM C-101) FOR SUCH PROPOSALS.)		WELL API NO. 30-025-31570
1. Type of Well: Oil Well <input checked="" type="checkbox"/> Gas Well <input type="checkbox"/> Other <input type="checkbox"/>		5. Indicate Type of Lease 2011 STATE <input checked="" type="checkbox"/> FEE <input type="checkbox"/>
2. Name of Operator Chevron Midcontinent, L.P.		6. State Oil & Gas Lease No.
3. Address of Operator 6301 Deauville Blvd., Midland, TX 79706		7. Lease Name or Unit Agreement Name Lovington Paddock Unit
4. Well Location Unit Letter E : 1380 feet from the NORTH line and 400 feet from the WEST line Section 1 Township 17S Range 36E, NMPM, County Lea		8. Well Number: 136
11. Elevation (Show whether DR, RKB, RT, GR, etc.) 3837' GL		9. OGRID Number 241333
		10. Pool name or Wildcat Lovington, Paddock

12. Check Appropriate Box to Indicate Nature of Notice, Report or Other Data

NOTICE OF INTENTION TO:

PERFORM REMEDIAL WORK ☐ PLUG AND ABANDON ☒  
TEMPORARILY ABANDON ☐ CHANGE PLANS ☐  
PULL OR ALTER CASING ☐ MULTIPLE COMPL ☐  
DOWNHOLE COMMINGLE ☐

OTHER: ☐

SUBSEQUENT REPORT OF:

REMEDIAL WORK ☐ ALTERING CASING ☐  
COMMENCE DRILLING OPNS. ☐ P AND A ☐  
CASING/CEMENT JOB ☐

OTHER: ☐

13. Describe proposed or completed operations. (Clearly state all pertinent details, and give pertinent dates, including estimated date of starting any proposed work). SEE RULE 19.15.7.14 NMAC. For Multiple Completions: Attach wellbore diagram of proposed completion or recompletion. 8 5/8" 24# @ 1300': TOC @ surface; 5 1/2" 15.5# @ 6450': TOC @ surface; CIBP @ 6000' - well is currently TA'ed

Chevron USA INC respectfully requests to abandon this well as follows:

1. MIRU Coil Tubing Unit
2. TIH & tag CIBP @ 6000', fill well with fresh water, pressure test casing to 500 psi for 10 minutes - if pressure test passes, spot MLF
3. Spot 25 sx CL C cement f/ 6000' t/ 5773' (Perfs, Glorieta). If pressure test in Step 2 was unsuccessful, WOC, tag, pressure test casing to 500 psi for 10 minutes - if pressure test passes, spot MLF; if pressure test fails, contact engineer. If pressure test in Step 2 was successful, do not WOC & tag.
4. Spot 40 sx CL C cement f/ 4638' t/ 4294' (San Andres, Grayburg)
5. Spot 110 sx CL C cement f/ 3752' t/ 2750' (Queen, 7 Rivers, B. Salt)
6. Spot 30 sx CL C cement f/ 2250' t/ 1995' (T. Salt, Anhydrite)
7. Spot 150 sx CL C cement f/ 1350' t/ surface (Shoe, Fresh Water)
8. Verify top of cement at surface on all casing strings

I hereby certify that the information above is true and complete to the best of my knowledge and belief.

4/2/2019

X Nick Glann

Nick Glann  
P&A Engineer/Project Manager

SIGNATURE Signed by: Nick Glann

For State Use Only

APPROVED BY: Kerry Fortner  
Conditions of Approval (if any):

TITLE Compliance Officer A DATE 4-3-19

E-mail address: nglann@chevron.com PHONE: 432-687-7786

See Attached  
Conditions of Approval

# CURRENT WELLBORE DIAGRAM

## LPU 136

Created: 06/28/11 By: PTB  
 Updated: By:  
 Lease: Lovington Paddock Unit  
 Field: Lovington Paddock  
 Surf. Loc.: 1380' FNL & 400' FWL  
 Bot. Loc.:  
 County: Lea St.: NM  
 Status: TA'd Producing Well

Well #: 136 St. Lse:  
 API: 30-025-31570  
 Unit Ltr.: E Section: 1  
 TSHP/Rng: 17S 36E  
 Pool Code: OGRID:  
 Directions: Lovington, NM  
 Chevno: OV1663

### Surface Casing

Size: 8 5/8"  
 Wt., Grd.: 24#  
 Depth: 1300  
 Sxs Cmt: 500  
 Circulate: yes  
 TOC: surface  
 Hole Size: 12-1/4"

### Log Formation Tops

Anhy	2095
Salt	2200
Base Salt	2850
Seven Rivers	3287
Queen	3702
Grayburg	4394
San Andres	4588
Glorieta	5969
Paddock	6057

### Production Casing

Size: 5 1/2"  
 Wt., Grd.: 15.5#  
 Depth: 6450  
 Sxs Cmt: 1350  
 Circulate: Yes  
 TOC: Surface  
 Hole Size: 7 7/8"

KB:  
 DF:  
 GL: 3,837  
 Ini. Spud: 05/01/92  
 Ini. Comp.: 06/04/92

### Well History:

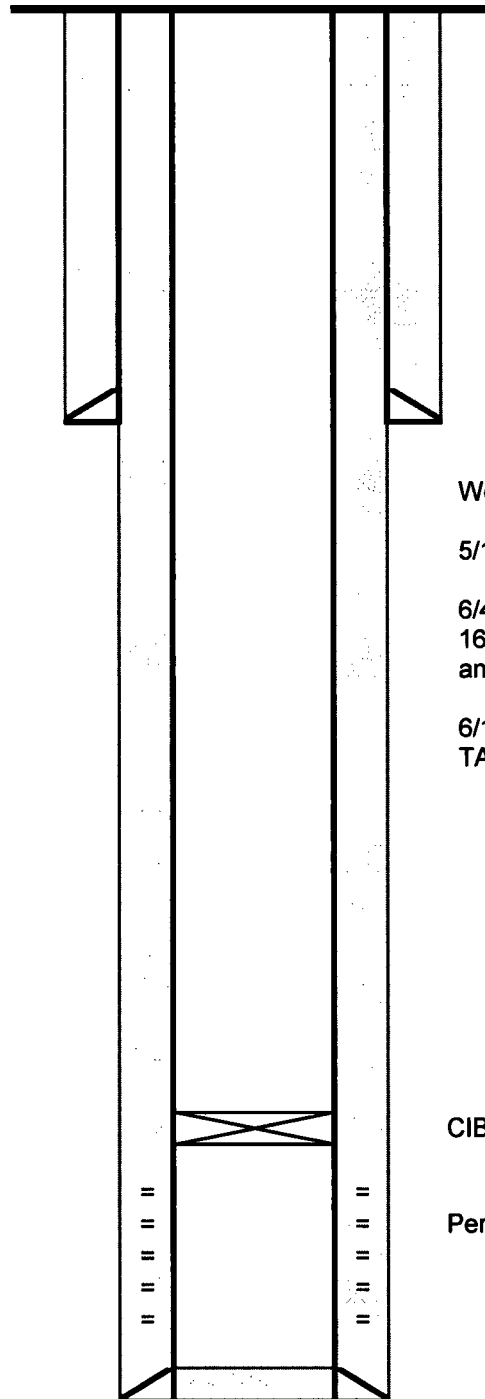
5/1/92 Spud well

6/4/92 Complete well. Intial stim  
16,000 gals 28% NEFE HCl acid  
and 12.6 tons CO2.

6/14/06 Set CIBP @ 6000'. Well is  
TA'd.

CIBP @ 6000'

Perfs: 6031' - 6269'



TD - 6450'; PBTD - 6400'

# PROPOSED WELLBORE DIAGRAM

## LPU 136

Created: 06/28/11 By: PTB  
 Updated: By:  
 Lease: Lovington Paddock Unit  
 Field: Lovington Paddock  
 Surf. Loc.: 1380' FNL & 400' FWL  
 Bot. Loc.:  
 County: Lea St.: NM  
 Status: TA'd Producing Well

Well #: 136 St. Lse:  
 API: 30-025-31570  
 Unit Ltr.: E Section: 1  
 TSHP/Rng: 17S 36E  
 Pool Code: OGRID:  
 Directions: Lovington, NM  
 Chevno: OV1663

### Surface Casing

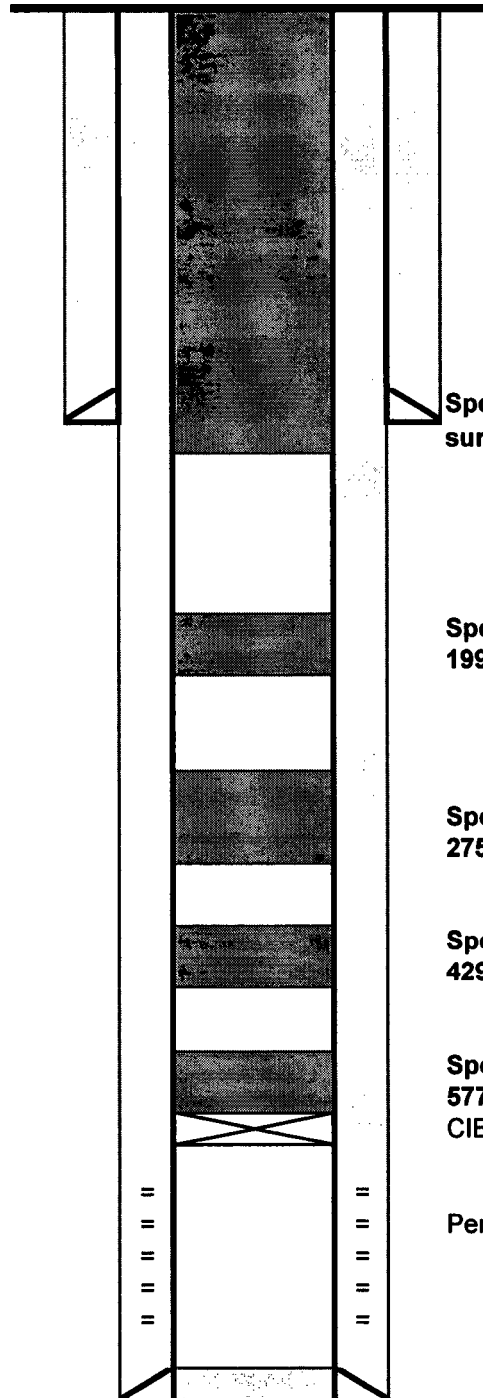
Size: 8 5/8"  
 Wt., Grd.: 24#  
 Depth: 1300  
 Sxs Cmt: 500  
 Circulate: yes  
 TOC: surface  
 Hole Size: 12-1/4"

Log Formation Tops	
Anhy	2095
Salt	2200
Base Salt	2850
Seven Rivers	3287
Queen	3702
Grayburg	4394
San Andres	4588
Glorieta	5969
Paddock	6057

### Production Casing

Size: 5 1/2"  
 Wt., Grd.: 15.5#  
 Depth: 6450  
 Sxs Cmt: 1350  
 Circulate: Yes  
 TOC: Surface  
 Hole Size: 7 7/8"

KB:  
 DF:  
 GL: 3,837  
 Ini. Spud: 05/01/92  
 Ini. Comp.: 06/04/92



Spot 150 sx CL C cmt f/ 1350' t/  
surface (Shoe, Fresh Water)

Spot 30 sx CL C cmt f/ 2250' t/  
1995' (T. Salt, Anhydrite)

Spot 110 sx CL C cmt f/ 3752' t/  
2750' (Queen, 7 Rivers, B. Salt)

Spot 40 sx CL C cmt f/ 4638' t/  
4294' (San Andres, Grayburg)

Spot 25 sx CL C cmt f/ 6000' t/  
5773' (Perfs, Glorieta)  
CIBP @ 6000'

Perfs: 6031' - 6269'

TD - 6450'; PBTD - 6400'

#### GENERAL CONDITIONS OF APPROVAL:

- 1) Insure all bradenheads have been exposed, identified, and valves are operational prior to rigging up on well.
- 2) Contact the appropriate NMOCD District Office no later than 24 hours prior to moving in and rigging up.
- 3) A copy of the approved C103 intent to P&A should be distributed to the onsite company and plugging representatives. Approved procedures are good for a period of one year from approved date, unless otherwise specified on the C103 intent. Approvals past this date will require the submission and approval of a new C103 intent.
- 4) A company representative is required to be present to witness all operations including setting CIBP's, circulation of mud laden fluids, perforating, squeezing or spotting cement plugs, tags, or any other operations approved on the C103 intent to P&A. Company representative should contact the NMOCD and report all operations.
- 5) Any changes that may be required during plugging operations should be approved by the NMOCD before proceeding.
- 6) A closed loop system is to be used for all plugging operations. Contents of the steel pits to be hauled to a NMOCD permitted disposal facility.
- 7) Mud laden fluids must be placed between all cement plugs mixed at 25 sacks of salt gel per 100 barrels of brine.
- 8) All cement plugs will be 100' or 25 sacks cement, whichever is greater. Class 'C' cement will be used above 7500' and Class 'H' below 7500'. Plugs should be no more than 3000' apart
- 9) Site remediation due within one year of well plugging completion.