

District I
1625 N. French Dr., Hobbs, NM 88240
Phone: (575) 393-6161 Fax: (575) 393-0720
District II
811 S. First St., Artesia, NM 88210
Phone: (575) 748-1283 Fax: (575) 748-9720
District III
1000 Rio Brazos Road, Artesia, NM 87410
Phone: (505) 334-6178 Fax: (505) 334-6170
District IV
1220 S. St. Francis Dr., Santa Fe, NM 87505
Phone: (505) 476-3460 Fax: (505) 476-3462

State of New Mexico
Energy, Minerals & Natural Resources Department
OIL CONSERVATION DIVISION
1220 South St. Francis Dr.
Santa Fe, NM 87505

Form C-102
Revised August 1, 2011
Submit one copy to appropriate
District Office

HOBBS OCD

APR 17 2019

☐ AMENDED REPORT

WELL LOCATION AND ACREAGE DEDICATION PLAT

API Number 30-025-	Pool Code	Pool Name
Property Code	Property Name AVOGATO "31" STATE	Well Number 100
OGRID No. 16696	Operator Name OXY USA INC.	Elevation 3735.9'

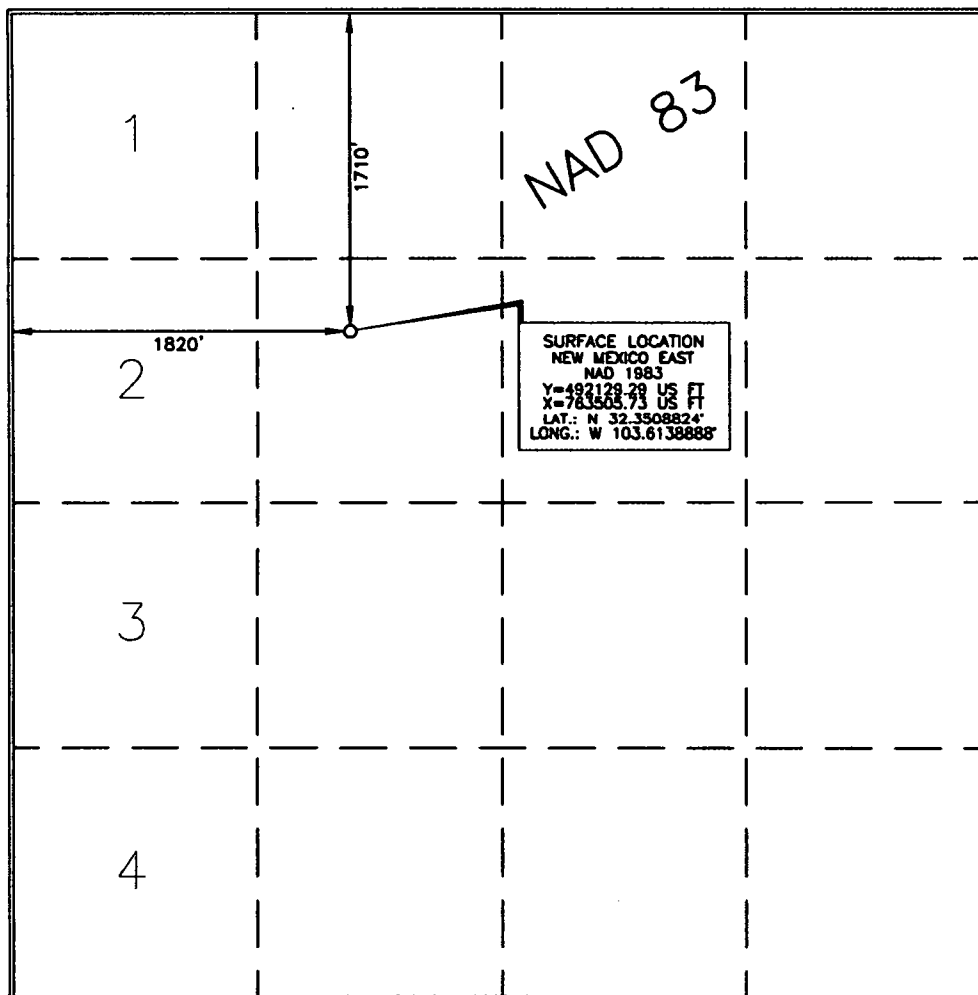
Surface Location

UL or lot no.	Section	Township	Range	Lot Idn	Feet from the	North/South line	Feet from the	East/West line	County
F	31	22 SOUTH	33 EAST, N.M.P.M.		1710'	NORTH	1820'	WEST	LEA

Bottom Hole Location If Different From Surface

UL or lot no.	Section	Township	Range	Lot Idn	Feet from the	North/South line	Feet from the	East/West line	County
Dedicated Acres		Joint or Infill	Consolidation Code	Order No.					

No allowable will be assigned to this completion until all interests have been consolidated or a non-standard unit has been approved by the division.



OPERATOR CERTIFICATION

I hereby certify that the information contained herein is true and complete to the best of my knowledge and belief, and that this organization either owns a working interest or leased mineral interest in the land including the proposed bottom hole location or has a right to drill this well at this location pursuant to a contract with an owner of such a mineral or working interest, or to a voluntary pooling agreement or a compulsory pooling order heretofore entered by the division.

Signature: *Leslie Reeves* Date: 4/8/2019
Printed Name: LESLIE REEVES
E-mail Address: LESLIE_REEVES@OXY.COM

SURVEYOR CERTIFICATION

I hereby certify that the well location shown on this plat was plotted from field notes of actual surveys made by me or under my supervision, and that the same is true and correct to the best of my belief.

Date of Survey: FEBRUARY 25, 2019
Signature and Seal: *Terry J. Asel*
Professional Surveyor

Certificate Number: 15079

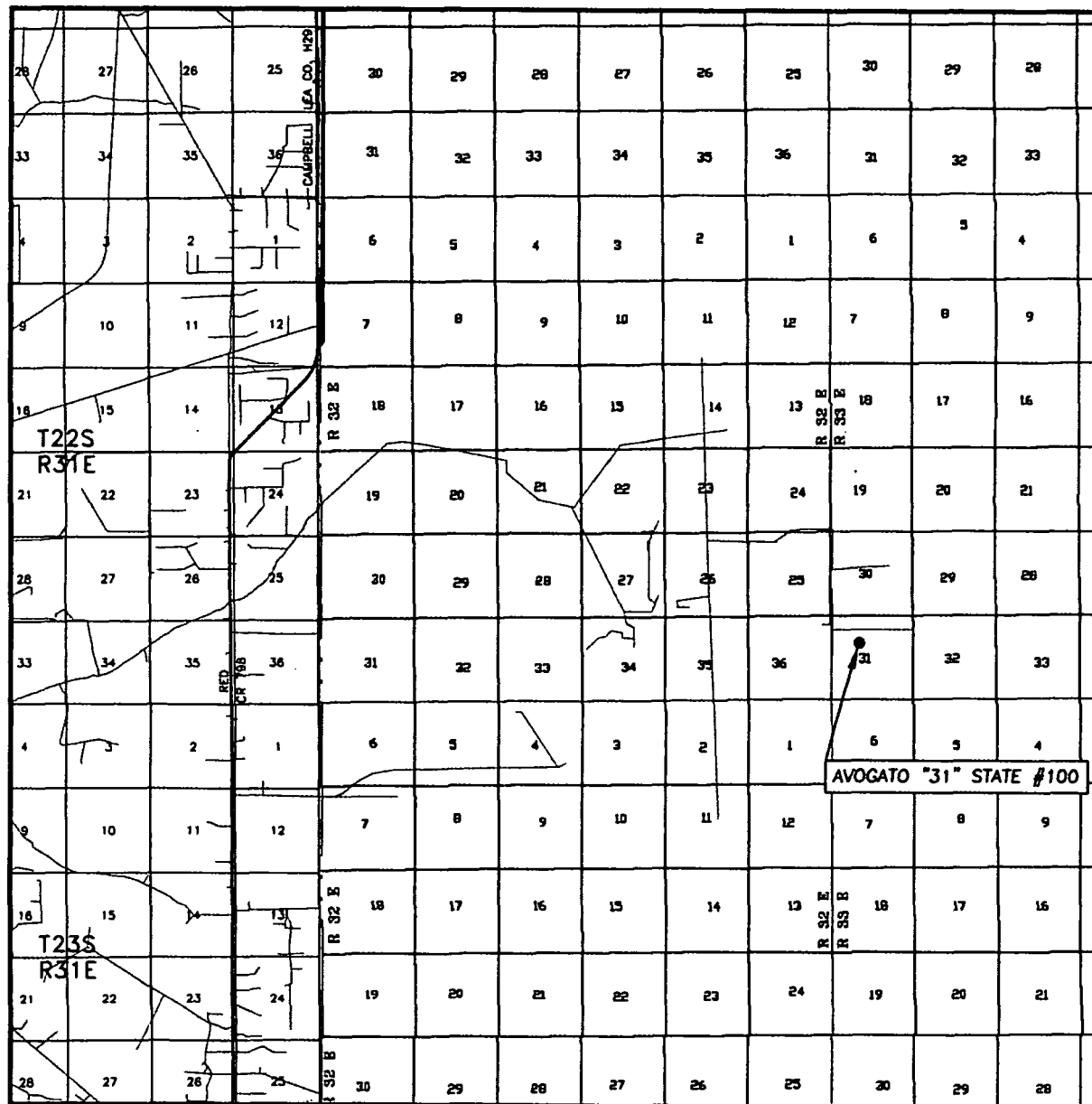
WO# 190225WL (NA)

FAA PERMIT: NO



Survey Date: 02/25/19	Sheet 1 of 1 Sheets	
W.O. Number: 190225WL	Drawn By: KA	Rev:
Date: 03/22/19	190225WL	Scale: 1"=200'

VICINITY MAP

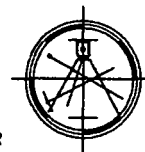


SEC. 31 TWP. 22-S RGE. 33-E
 SURVEY N.M.P.M.
 COUNTY LEA
 DESCRIPTION 1710' FNL & 1820' FWL
 ELEVATION 3735.9'
 OPERATOR OXY USA INC.
 LEASE AVOGATO "31" STATE #100

SCALE: 1" = 2 MILES

Asel Surveying

P.O. BOX 393 - 310 W. TAYLOR
 HOBBS, NEW MEXICO - 575-393-9146



DIRECTIONS BEGINNING AT THE INTERSECTION OF HWY. #128 AND COUNTY ROAD #798 (RED ROAD), GO NORTH ON COUNTY ROAD #798 FOR 7.3 MILES, TURN RIGHT AND GO NORTHEAST ON CALICHE ROAD FOR 2.7 MILES, CONTINUE EAST/SOUTHEAST FOR 2.5 MILES, CONTINUE NORTHEAST FOR 2.0 MILES, TURN RIGHT AND GO SOUTH FOR 1.3 MILES, TURN LEFT AND GO EAST FOR 0.7 MILES, TURN LEFT AND GO NORTHEAST/EAST FOR 0.8 MILES, CONTINUE EAST FOR 100.0 FEET, TURN RIGHT AND GO SOUTH FOR 1.1 MILES, TURN LEFT AND GO EAST FOR 0.3 MILES, TURN RIGHT ON PROPOSED ROAD AND GO SOUTH FOR 665.6 FEET TO LOCATION.