

District I  
1625 N. French Dr., Hobbs, NM 88240  
Phone: (575) 393-6161 Fax: (575) 393-0720  
District II  
811 S. First St., Artesia, NM 88210  
Phone: (575) 748-1283 Fax: (575) 748-9720  
District III  
1000 Rio Brazos Road, Aztec, NM 87410  
Phone: (505) 334-6178 Fax: (505) 334-6170  
District IV  
1220 S. St. Francis Dr., Santa Fe, NM 87505  
Phone: (505) 476-3460 Fax: (505) 476-3462

State of New Mexico  
Energy, Minerals & Natural Resources  
Department  
OIL CONSERVATION DIVISION  
1220 South St. Francis Dr.  
Santa Fe, NM 87505

FORM C-102

Revised August 1, 2011

Submit one copy to appropriate

District Office

☐ AMENDED REPORT

WELL LOCATION AND ACREAGE DEDICATION PLAT

<sup>1</sup> API Number <b>30-025-45844</b>	<sup>2</sup> Pool Code <b>96674</b>	<sup>3</sup> Pool Name <b>TRIPLE X; DONE SPRING WEST</b>
<sup>4</sup> Property Code <b>325171</b>	<sup>5</sup> Property Name <b>ZEUS STATE</b>	
<sup>6</sup> OGRID No. <b>372043</b>	<sup>7</sup> Operator Name <b>TAP ROCK OPERATING, LLC.</b>	<sup>8</sup> Well Number <b>173H</b>
		<sup>9</sup> Elevation <b>3617'</b>

<sup>10</sup>Surface Location

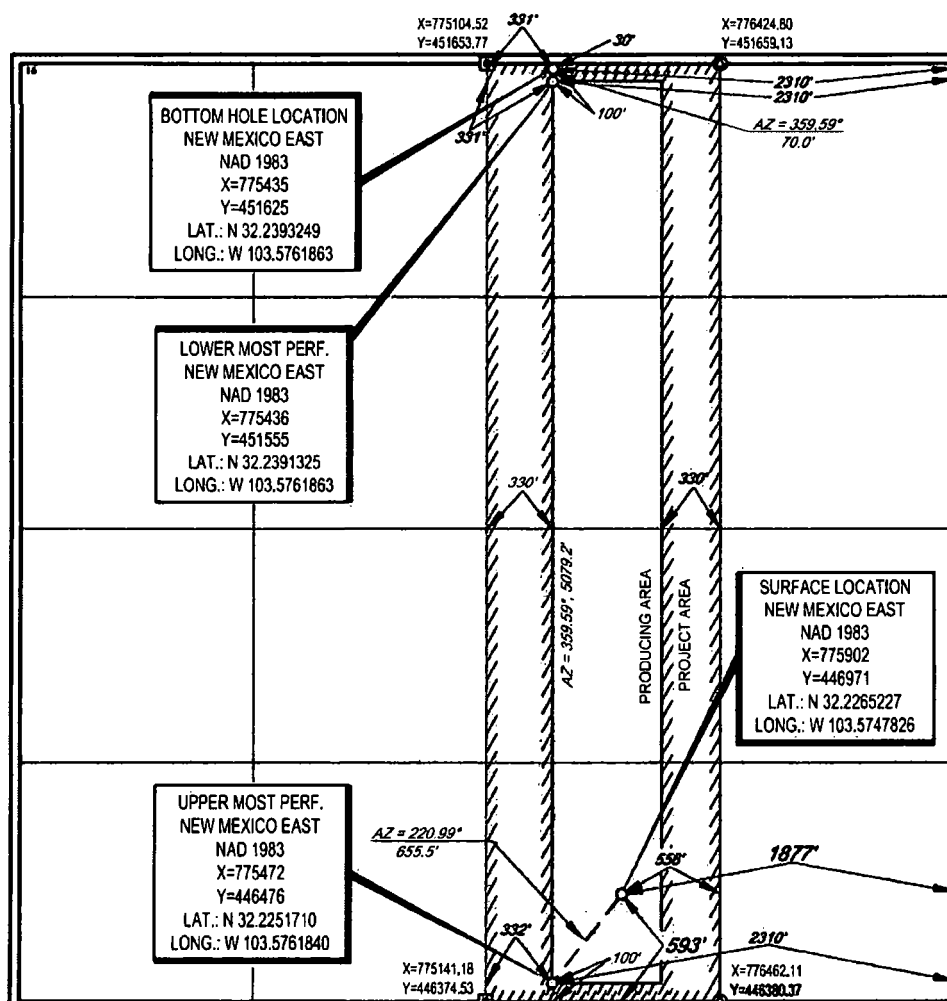
UL or lot no.	Section	Township	Range	Lot Ida	Feet from the	North/South line	Feet from the	East/West line	County
<b>0</b>	<b>9</b>	<b>24-S</b>	<b>33-E</b>	<b>-</b>	<b>593'</b>	<b>SOUTH</b>	<b>1877'</b>	<b>EAST</b>	<b>LEA</b>

<sup>11</sup>Bottom Hole Location If Different From Surface

UL or lot no.	Section	Township	Range	Lot Ida	Feet from the	North/South line	Feet from the	East/West line	County
<b>B</b>	<b>9</b>	<b>24-S</b>	<b>33-E</b>	<b>-</b>	<b>30'</b>	<b>NORTH</b>	<b>2310'</b>	<b>EAST</b>	<b>LEA</b>

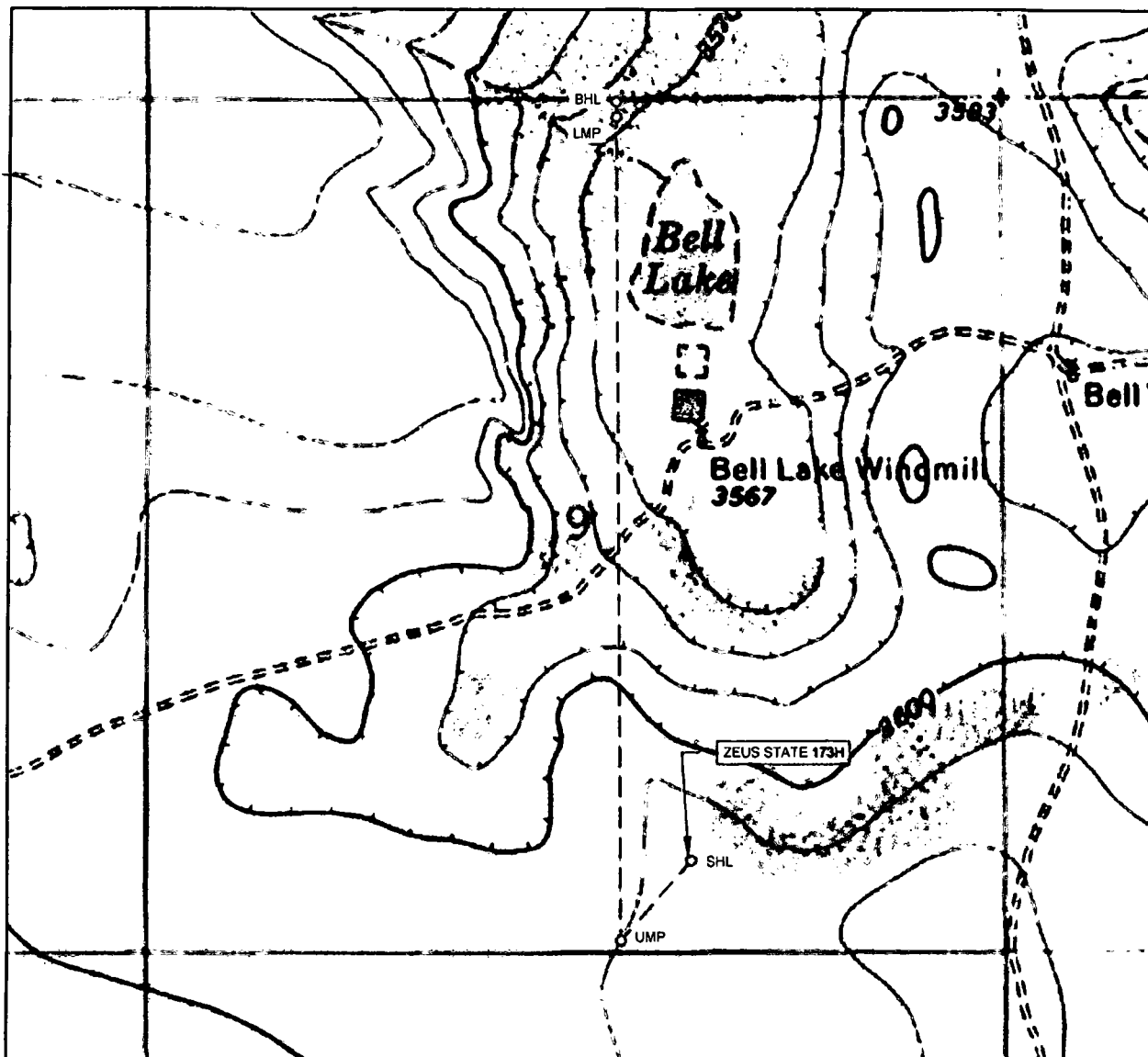
<sup>12</sup> Dedicated Acres	<sup>13</sup> Joint or Infill	<sup>14</sup> Consolidation Code	<sup>15</sup> Order No.

No allowable will be assigned to this completion until all interests have been consolidated or a non-standard unit has been approved by the division.



<sup>17</sup> OPERATOR CERTIFICATION	
I hereby certify that the information contained herein is true and complete to the best of my knowledge and belief, and that this organization either owns a working interest or undivided mineral interest in the land including the proposed bottom hole location or has a right to drill this well at this location pursuant to a contract with an owner of such a mineral or working interest, or to a voluntary pooling agreement or a compulsory pooling order heretofore entered by the division.	
Signature <i>Rachelle Reese</i>	Date <b>4/23/19</b>
Printed Name <b>Rachelle Reese</b>	
E-mail Address <b>mreesed@taprock.com</b>	
<sup>18</sup> SURVEYOR CERTIFICATION	
I hereby certify that the well location shown on this plat was plotted from field notes of actual surveys made by me or under my supervision, and that the same is true to the best of my belief.	
Date of Survey <b>04/23/2019</b>	Signature and Seal of Registered Surveyor <i>[Signature]</i>
Certificate Number <b>11401</b>	

# LOCATION & ELEVATION VERIFICATION MAP



LEASE NAME & WELL NO.: ZEUS STATE 173H

SECTION 9 TWP 24-S RGE 33-E SURVEY N.M.P.M.  
 COUNTY LEA STATE NM ELEVATION 3617'  
 DESCRIPTION 593' FSL & 1877' FEL

LATITUDE N 32.2265227 LONGITUDE W 103.5747826



SCALE: 1" = 1000'  
 0' 500' 1000'

THIS EASEMENT/SERVITUDE LOCATION SHOWN HEREON HAS BEEN SURVEYED ON THE GROUND UNDER MY SUPERVISION AND PREPARED ACCORDING TO THE EVIDENCE FOUND AT THE TIME OF SURVEY, AND DATA PROVIDED BY TAP ROCK OPERATING, LLC. THIS CERTIFICATION IS MADE AND LIMITED TO THOSE PERSONS OR ENTITIES SHOWN ON THE FACE OF THIS PLAT AND IS NON-TRANSFERABLE. THIS SURVEY IS CERTIFIED FOR THIS TRANSACTION ONLY.

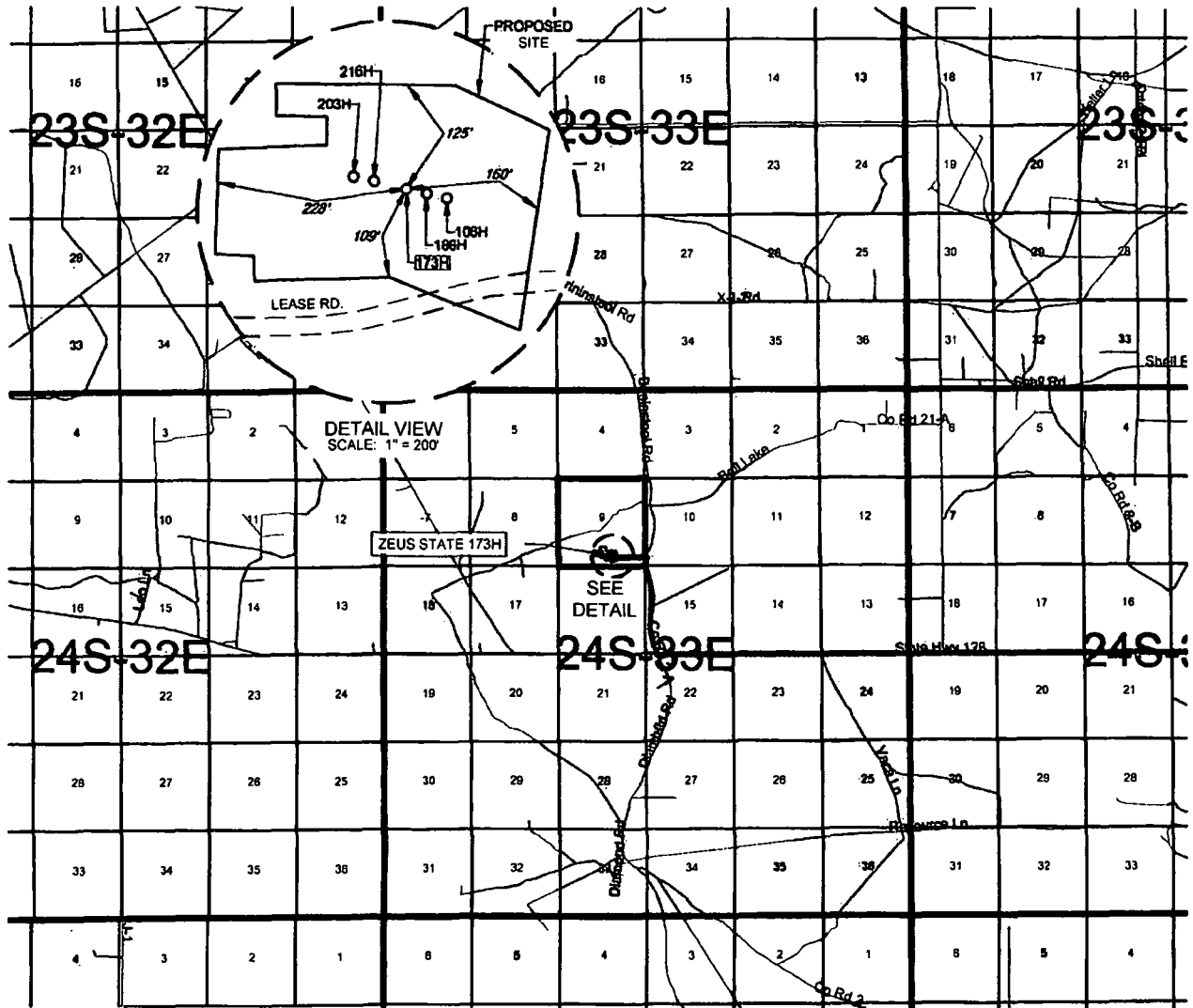
ALL BEARINGS, DISTANCES, AND COORDINATE VALUES CONTAINED HEREON ARE GRID BASED UPON THE NEW MEXICO COORDINATE SYSTEM OF 1983, EAST ZONE, U.S. SURVEY FEET.



**TOPOGRAPHIC**  
 LOYALTY INNOVATION LEGACY

1400 EVERMAN PARKWAY, Ste. 140 • FT. WORTH, TEXAS 76140  
 TELEPHONE: (817) 744-7512 • FAX (817) 744-7554  
 2803 NORTH BIG SPRING • MIDLAND, TEXAS 79705  
 TELEPHONE: (432) 682-1853 OR (800) 767-1853 • FAX (432) 682-1743  
 WWW.TOPOGRAPHIC.COM

# EXHIBIT 2 VICINITY MAP



LEASE NAME & WELL NO.: ZEUS STATE 173H

SECTION 9 TWP 24-S RGE 33-E SURVEY N.M.P.M.  
COUNTY LEA STATE NM  
DESCRIPTION 593' FSL & 1877' FEL

DISTANCE & DIRECTION  
FROM INT. OF NM-128 W & NM-18S, GO WEST ON NM-128 W  $\pm 23.9$   
MILES, THENCE NORTH (RIGHT) ON BRININSTOOL RD.  $\pm 1.1$  MILES,  
THENCE WEST (LEFT) ON LEASE RD.  $\pm 0.3$  MILES, TO A POINT  $\pm 184$   
FEET SOUTHEAST OF THE LOCATION.



SCALE: 1" = 1000'  
0' 5000' 10000'



**TOPOGRAPHIC**  
LOYALTY. INNOVATION. LEGACY

1400 EVERMAN PARKWAY, Ste. 140 • FT. WORTH, TEXAS 76140  
TELEPHONE: (817) 744-7512 • FAX (817) 744-7554  
2603 NORTH BIG SPRING • MIDLAND, TEXAS 79705  
TELEPHONE: (432) 882-1653 OR (800) 767-1653 • FAX (432) 882-1743  
WWW.TOPOGRAPHIC.COM

THIS EASEMENT/SERVITUDE LOCATION SHOWN HEREON HAS BEEN SURVEYED ON THE GROUND UNDER MY SUPERVISION AND PREPARED ACCORDING TO THE EVIDENCE FOUND AT THE TIME OF SURVEY, AND DATA PROVIDED BY TAP ROCK OPERATING, L.L.C. THIS CERTIFICATION IS MADE AND LIMITED TO THOSE PERSONS OR ENTITIES SHOWN ON THE FACE OF THIS PLAT AND IS NON-TRANSFERABLE. THIS SURVEY IS CERTIFIED FOR THIS TRANSACTION ONLY.

ALL BEARINGS, DISTANCES, AND COORDINATE VALUES CONTAINED HEREON ARE GRID BASED UPON THE NEW MEXICO COORDINATE SYSTEM OF 1983, EAST ZONE, U.S. SURVEY FEET.

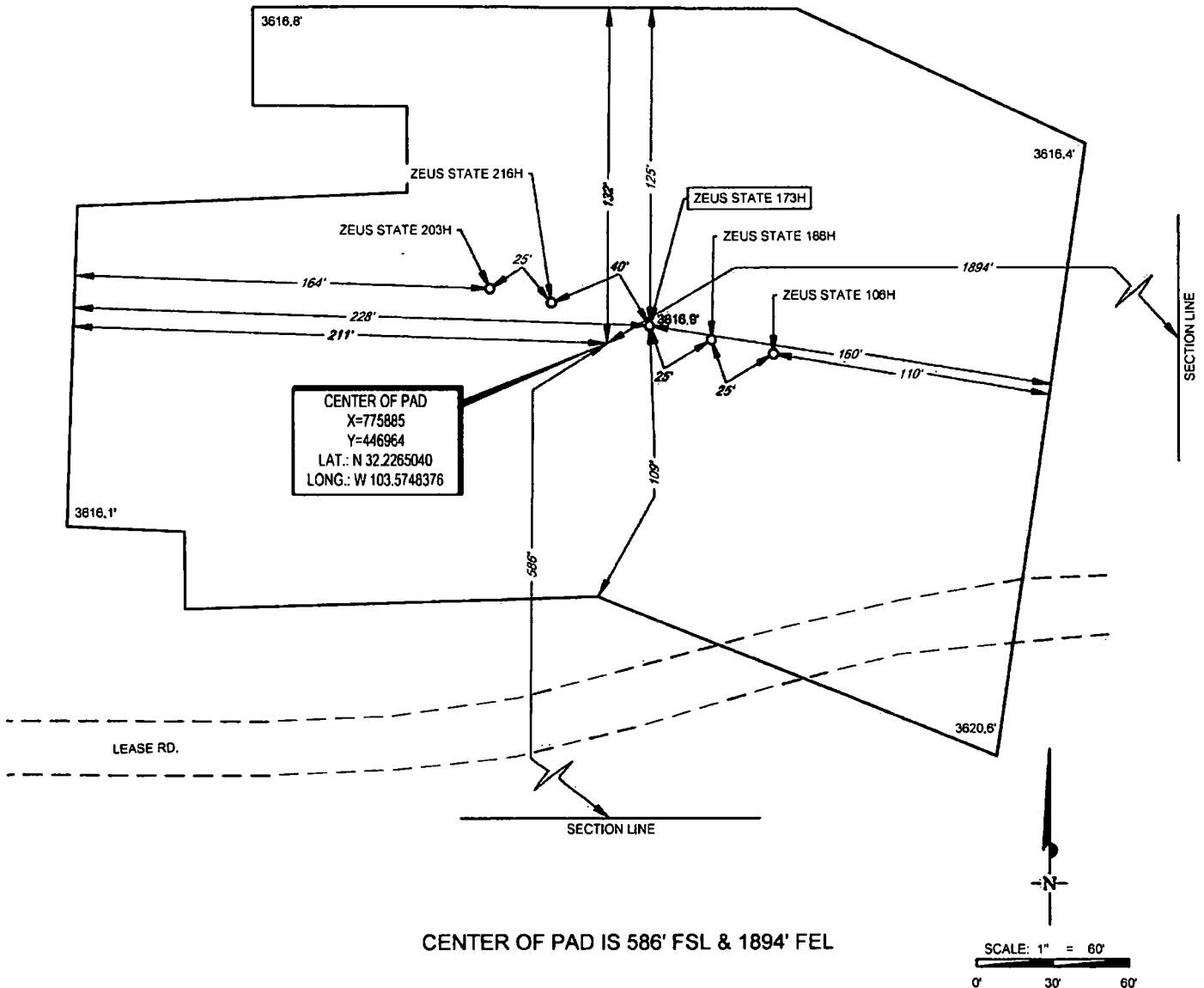


# EXHIBIT 2B



SECTION 9, TOWNSHIP 24-S, RANGE 33-E, N.M.P.M.  
LEA COUNTY, NEW MEXICO

DETAIL VIEW  
SCALE: 1" = 60'



LEASE NAME & WELL NO.: ZEUS STATE 173H  
173H LATITUDE N 32.2265227 173H LONGITUDE W 103.5747826

ALL BEARINGS, DISTANCES, AND COORDINATE VALUES CONTAINED HEREON ARE GRID BASED UPON THE NEW MEXICO COORDINATE SYSTEM OF 1983, EAST ZONE, U.S. SURVEY FEET  
THIS PROPOSED PAD SITE LOCATION SHOWN HEREON HAS BEEN SURVEYED ON THE GROUND UNDER MY SUPERVISION AND PREPARED ACCORDING TO THE EVIDENCE FOUND AT THE TIME OF SURVEY, AND DATA PROVIDED BY TAP ROCK OPERATING, LLC. THIS CERTIFICATION IS MADE AND LIMITED TO THOSE PERSONS OR ENTITIES SHOWN ON THE FACE OF THIS PLAT AND IS NON-TRANSFERABLE. THIS SURVEY IS CERTIFIED FOR THIS TRANSACTION ONLY.

**TOPOGRAPHIC**  
LOYALTY INNOVATION LEGACY  
1400 EVERMAN PARKWAY, Ste. 146 • FT. WORTH, TEXAS 76140  
TELEPHONE: (817) 744-7512 • FAX (817) 744-7554  
2903 NORTH BIG SPRING • MIDLAND, TEXAS 79705  
TELEPHONE: (432) 682-1653 OR (800) 787-1653 • FAX (432) 682-1743  
WWW.TOPOGRAPHIC.COM

ORIGINAL DOCUMENT SIZE: 8.5" X 11"