

District I
1625 N. French Dr., Hobbs, NM 88240
Phone: (575) 393-6161 Fax: (575) 393-0720
District II
811 S. First St., Artesia, NM 88210
Phone: (575) 748-1283 Fax: (575) 748-9720
District III
1000 Rio Brazos Road, Aztec, NM 87410
Phone: (505) 334-6178 Fax: (505) 334-6170
District IV
1220 S. St. Francis Dr., Santa Fe, NM 87505
Phone: (505) 476-3460 Fax: (505) 476-3462

State of New Mexico
Energy, Minerals & Natural Resources
Department
OIL CONSERVATION DIVISION
1220 South St. Francis Dr.
Santa Fe, NM 87505

HOBBS OCD
APR 23 2019

FORM C-102
Revised August 1, 2011
Submit one copy to appropriate
District Office

☐ AMENDED REPORT

WELL LOCATION AND ACREAGE DEDICATION PLAT

| | | |
|--|---|--|
| ¹ API Number 30-025-44845 | ² Pool Code 96674 | ³ Pool Name TRIPLE X; BONE SPRING, WEST |
| ⁴ Property Code 725171 | ⁵ Property Name ZEUS STATE | |
| ⁶ GRID No. 372043 | ⁷ Operator Name TAP ROCK OPERATING, LLC. | ⁸ Well Number 186H |
| | | ⁹ Elevation 3617' |

¹⁰Surface Location

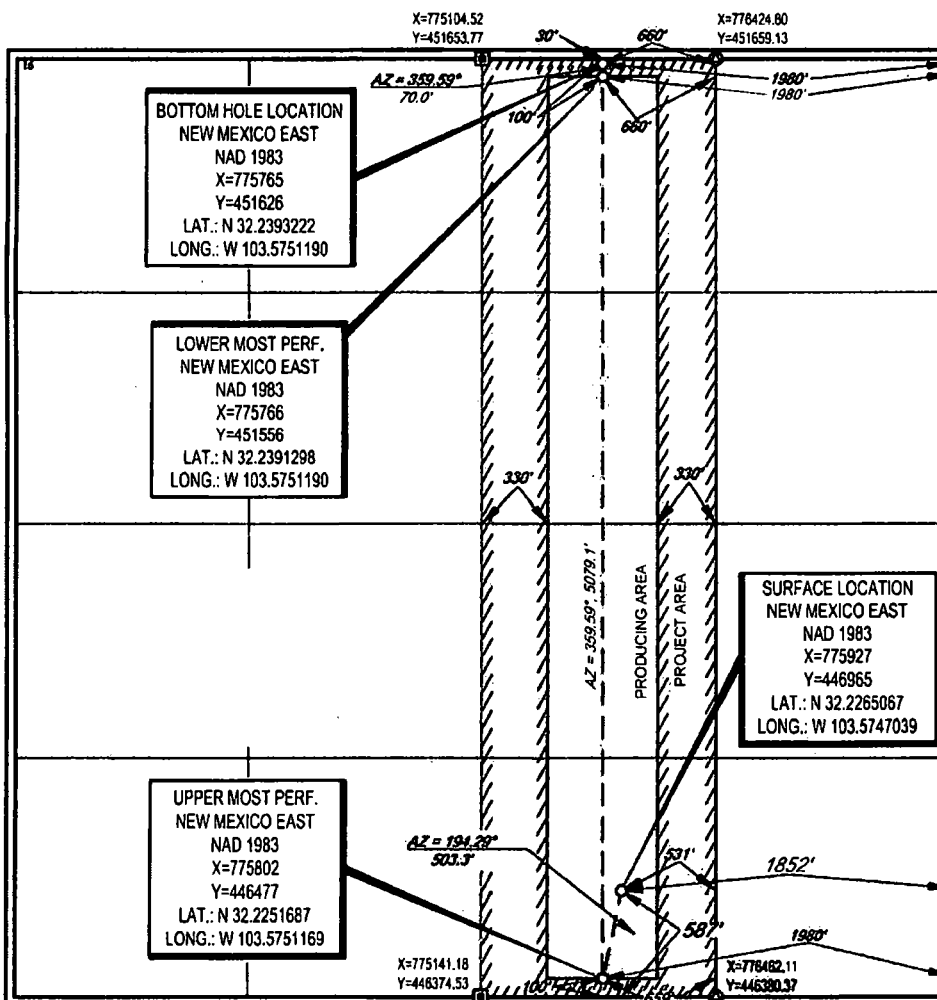
| UL or lot no. | Section | Township | Range | Lot Idn | Feet from the | North/South line | Feet from the | East/West line | County |
|---------------|----------|-------------|-------------|----------|---------------|------------------|---------------|----------------|------------|
| 0 | 9 | 24-S | 33-E | - | 587' | SOUTH | 1852' | EAST | LEA |

¹¹Bottom Hole Location If Different From Surface

| UL or lot no. | Section | Township | Range | Lot Idn | Feet from the | North/South line | Feet from the | East/West line | County |
|---------------|----------|-------------|-------------|----------|---------------|------------------|---------------|----------------|------------|
| B | 9 | 24-S | 33-E | - | 30' | NORTH | 1980' | EAST | LEA |

| | | | |
|-------------------------------|-------------------------------|----------------------------------|-------------------------|
| ¹² Dedicated Acres | ¹³ Joint or Infill | ¹⁴ Consolidation Code | ¹⁵ Order No. |
| | | | |

No allowable will be assigned to this completion until all interests have been consolidated or a non-standard unit has been approved by the division.



¹⁷OPERATOR CERTIFICATION

I hereby certify that the information contained herein is true and complete to the best of my knowledge and belief, and that this organization either owns a working interest or undivided mineral interest in the land including the proposed bottom hole location or has a right to drill this well at this location pursuant to a contract with an owner of such a mineral or working interest, or to a voluntary pooling agreement or a compulsory pooling order heretofore entered by the division.

Rachelle Reese 4/23/19
Signature Date

Rachelle Reese
Printed Name

rreese@taprock.com
E-mail Address

¹⁸SURVEYOR CERTIFICATION

I hereby certify that the well location shown on this plat was plotted from field notes of actual surveys made by me or under my supervision, and that the same is true to the best of my belief.

04/23/2019
Date of Survey

John A. Carnegie
Signature

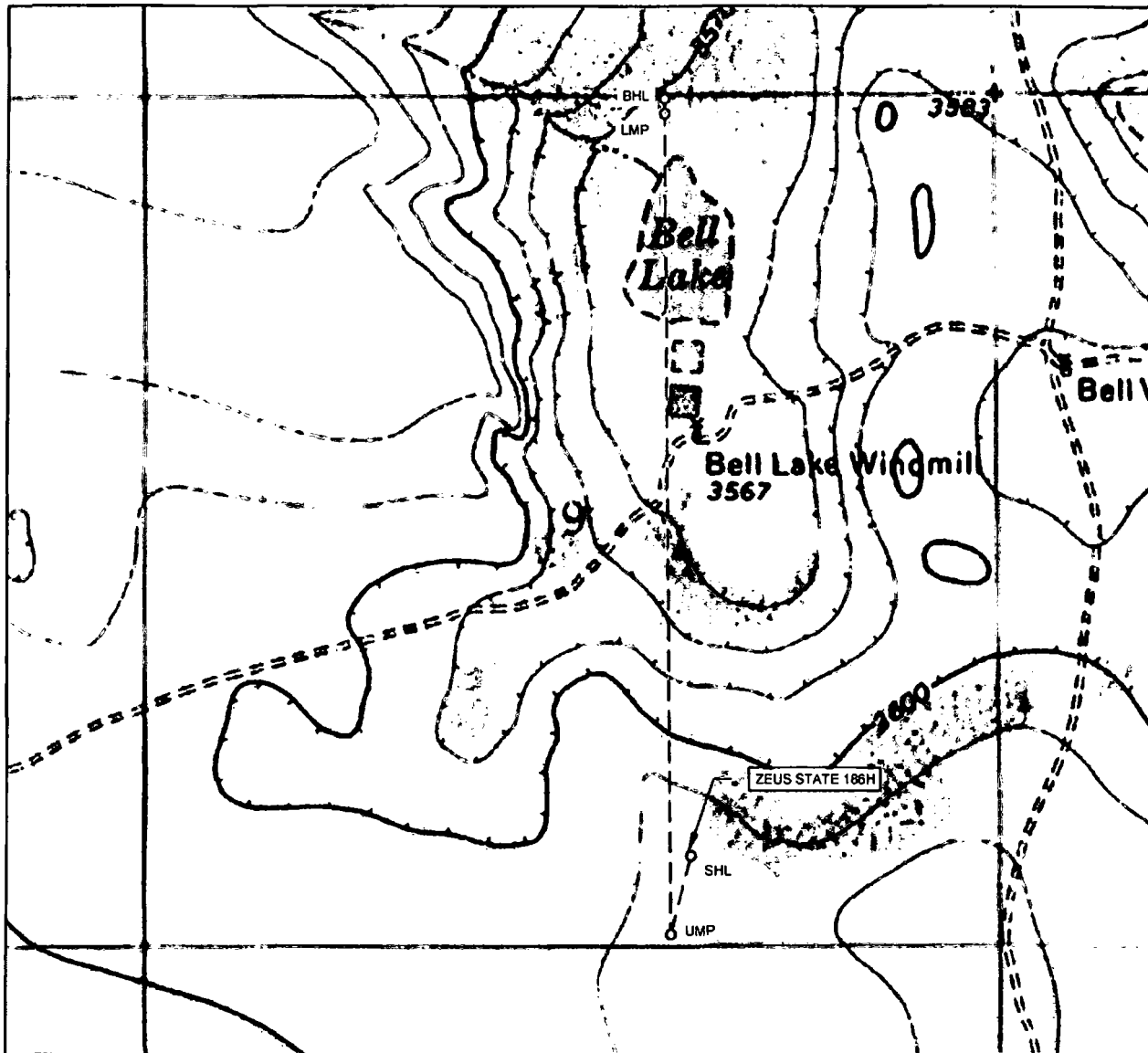
NEW MEXICO
REGISTERED PROFESSIONAL SURVEYOR
11401

M. J. Carnegie
Certificate Number

POTASH OIL & GAS MINE AREA

UTM: FW FILED IN FW SHARED SURVEY ITAP ROCK ZEUS UNIT FINAL PRODUCT SLO ZEUS STATE 186H REV2.DWG 4/22/2019 9:12:22 AM mneest

LOCATION & ELEVATION VERIFICATION MAP



LEASE NAME & WELL NO.: ZEUS STATE 186H

SECTION 9 TWP 24-S RGE 33-E SURVEY N.M.P.M.
 COUNTY LEA STATE NM ELEVATION 3617'
 DESCRIPTION 587' FSL & 1852' FEL

LATITUDE N 32.2265067 LONGITUDE W 103.5747039



SCALE: 1" = 1000'
 0' 500' 1000'

THIS EASEMENT/SERVITUDE LOCATION SHOWN HEREON HAS BEEN SURVEYED ON THE GROUND UNDER MY SUPERVISION AND PREPARED ACCORDING TO THE EVIDENCE FOUND AT THE TIME OF SURVEY, AND DATA PROVIDED BY TAP ROCK OPERATING, LLC. THIS CERTIFICATION IS MADE AND LIMITED TO THOSE PERSONS OR ENTITIES SHOWN ON THE FACE OF THIS PLAT AND IS NON-TRANSFERABLE. THIS SURVEY IS CERTIFIED FOR THIS TRANSACTION ONLY.

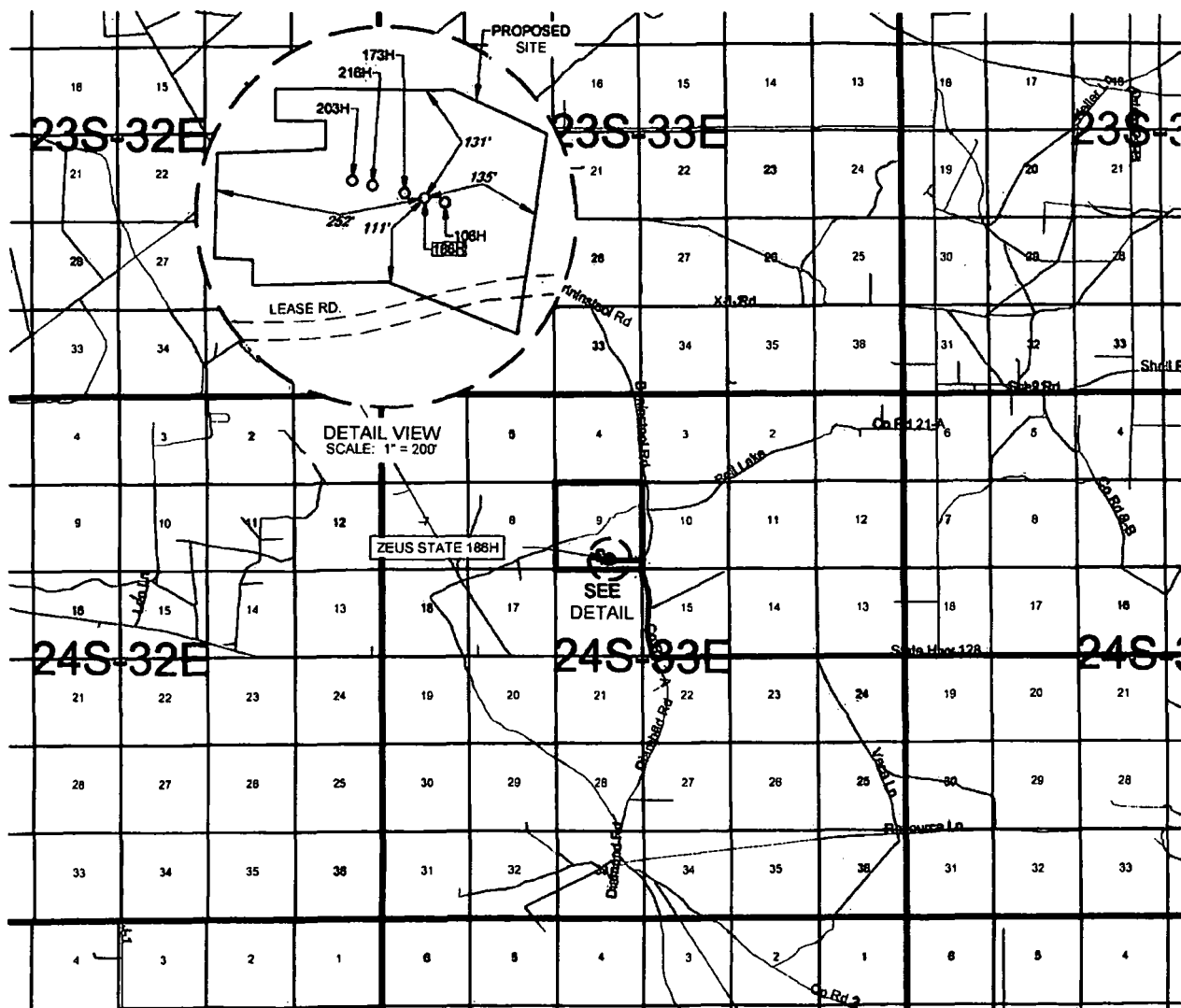
ALL BEARINGS, DISTANCES, AND COORDINATE VALUES CONTAINED HEREON ARE GRID BASED UPON THE NEW MEXICO COORDINATE SYSTEM OF 1983, EAST ZONE, U.S. SURVEY FEET.



TOPOGRAPHIC
 LOYALTY INNOVATION LEGACY

1400 EVERMAN PARKWAY, Ste. 146 • FT. WORTH, TEXAS 76140
 TELEPHONE: (817) 744-7512 • FAX (817) 744-7554
 2803 NORTH BIG SPRING • MIDLAND, TEXAS 79705
 TELEPHONE: (432) 682-1853 OR (800) 787-1853 • FAX (432) 682-1743
 WWW.TOPOGRAPHIC.COM

EXHIBIT 2 VICINITY MAP

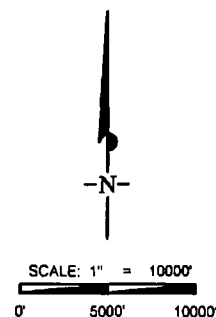


TAP ROCK

LEASE NAME & WELL NO.: ZEUS STATE 186H

SECTION 9 TWP 24-S RGE 33-E SURVEY N.M.P.M.
COUNTY LEA STATE NM
DESCRIPTION 587' FSL & 1852' FEL

DISTANCE & DIRECTION
FROM INT. OF NM-128 W & NM-18S, GO WEST ON NM-128 W ±23.9
MILES, THENCE NORTH (RIGHT) ON BRININSTOOL RD. ±1.1 MILES,
THENCE WEST (LEFT) ON LEASE RD. ±0.3 MILES, TO A POINT ±162
FEET SOUTHEAST OF THE LOCATION.



THIS EASEMENT/SERVITUDE LOCATION SHOWN HEREON HAS BEEN SURVEYED ON THE GROUND UNDER MY SUPERVISION AND PREPARED ACCORDING TO THE EVIDENCE FOUND AT THE TIME OF SURVEY, AND DATA PROVIDED BY TAP ROCK OPERATING, LLC. THIS CERTIFICATION IS MADE AND LIMITED TO THOSE PERSONS OR ENTITIES SHOWN ON THE FACE OF THIS PLAT AND IS NON-TRANSFERABLE. THIS SURVEY IS CERTIFIED FOR THIS TRANSACTION ONLY.

ALL BEARINGS, DISTANCES, AND COORDINATE VALUES CONTAINED HEREON ARE GRID BASED UPON THE NEW MEXICO COORDINATE SYSTEM OF 1983, EAST ZONE, U.S. SURVEY FEET

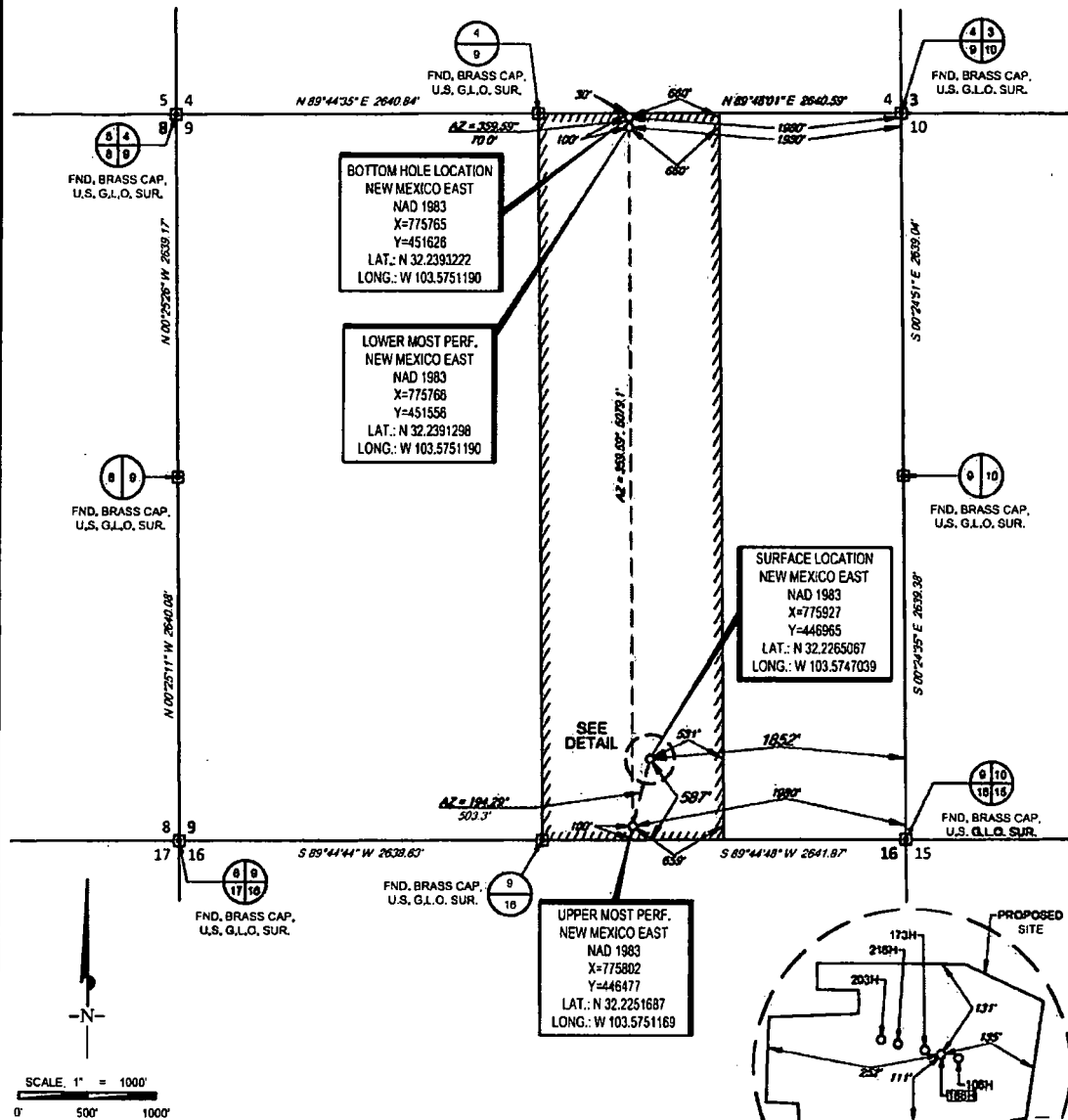


TOPOGRAPHIC
LOYALTY INNOVATION LEGACY

1400 EVERMAN PARKWAY, Ste. 146 • FT. WORTH, TEXAS 76140
TELEPHONE: (817) 744-7512 • FAX (817) 744-7534
2803 NORTH BIG SPRING • MIDLAND, TEXAS 79703
TELEPHONE: (432) 682-1853 OR (800) 787-1853 • FAX (432) 682-1743
WWW.TOPOGRAPHIC.COM

TAP ROCK EXHIBIT 2A

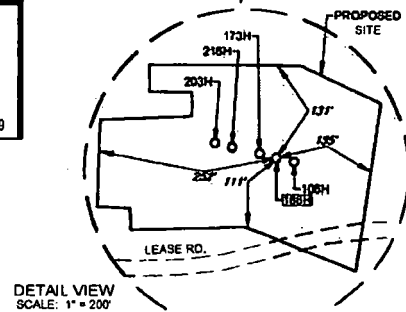
SECTION 9, TOWNSHIP 24-S, RANGE 33-E, N.M.P.M.
LEA COUNTY, NEW MEXICO



LEASE NAME & WELL NO.: ZEUS STATE 186H

SECTION 9 TWP 24-S RGE 33-E SURVEY N.M.P.M.
COUNTY LEA STATE NM
DESCRIPTION 587' FSL & 1852' FEL

DISTANCE & DIRECTION
FROM INT. OF NM-128 W & NM-18S, GO WEST ON NM-128 W ± 23.9
MILES, THENCE NORTH (RIGHT) ON BRINSTOOL RD. ± 1.1 MILES,
THENCE WEST (LEFT) ON LEASE RD. ± 0.3 MILES, TO A POINT ± 162
FEET SOUTHEAST OF THE LOCATION.



John Trevor Carnegie, P.S. No. 11401
April 2, 2019

TOPOGRAPHIC
LOYALTY INNOVATION LEGACY
1400 EVERMAN PARKWAY, SUITE 145 • FT. WORTH, TEXAS 76140
TELEPHONE (817) 744-7919 • FAX (817) 744-7924
1303 NORTH 300 SPRINGS • MIDLAND, TEXAS 79705
TELEPHONE (432) 682-1653 OR (800) 767-1053 • FAX (432) 682-1743
WWW.TOPOGRAPHIC.COM

ALL BEARINGS, DISTANCES, AND COORDINATE VALUES CONTAINED HEREON ARE GRID
BASED UPON THE NEW MEXICO COORDINATE SYSTEM OF 1983, EAST ZONE, U.S. SURVEY
FEET

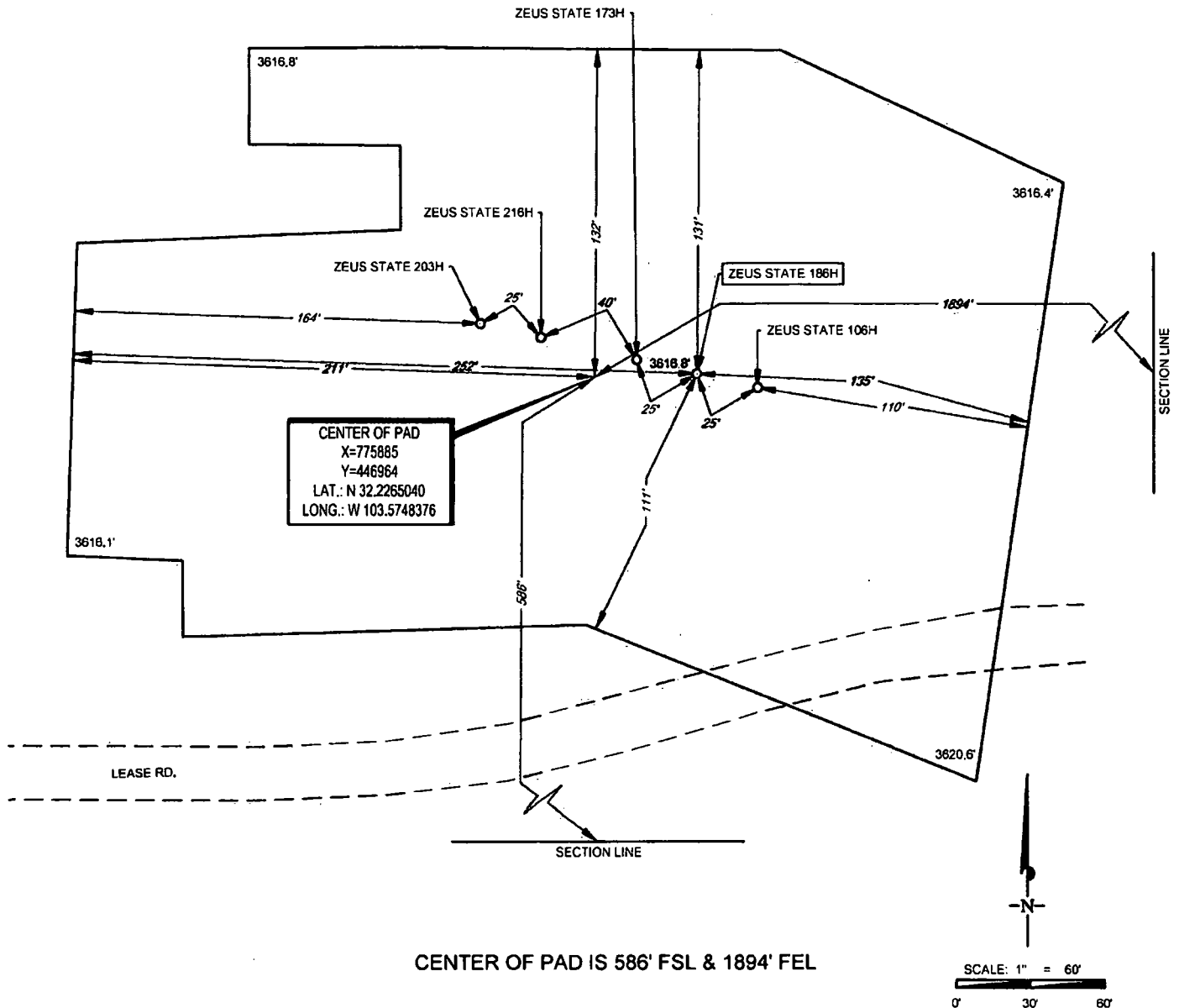
THIS EASEMENT/SERVITUDE LOCATION SHOWN HEREON HAS BEEN SURVEYED ON THE GROUND
UNDER MY SUPERVISION AND PREPARED ACCORDING TO THE EVIDENCE FOUND AT THE TIME OF
SURVEY, AND DATA PROVIDED BY TAP ROCK OPERATING, LLC. THIS CERTIFICATION IS MADE AND
LIMITED TO THOSE PERSONS OR ENTITIES SHOWN ON THE FACE OF THIS PLAT AND IS
NON-TRANSFERABLE. THIS SURVEY IS CERTIFIED FOR THIS TRANSACTION ONLY.

EXHIBIT 2B



SECTION 9, TOWNSHIP 24-S, RANGE 33-E, N.M.P.M.
LEA COUNTY, NEW MEXICO

DETAIL VIEW
SCALE: 1" = 60'



LEASE NAME & WELL NO.: ZEUS STATE 186H
186H LATITUDE N 32.2265067 186H LONGITUDE W 103.5747039

ALL BEARINGS, DISTANCES, AND COORDINATE VALUES CONTAINED HEREON ARE GRID BASED UPON THE NEW MEXICO COORDINATE SYSTEM OF 1983, EAST ZONE, U.S. SURVEY FEET
THIS PROPOSED PAD SITE LOCATION SHOWN HEREON HAS BEEN SURVEYED ON THE GROUND UNDER MY SUPERVISION AND PREPARED ACCORDING TO THE EVIDENCE FOUND AT THE TIME OF SURVEY AND DATA PROVIDED BY TAP ROCK OPERATING, LLC. THIS CERTIFICATION IS MADE AND LIMITED TO THOSE PERSONS OR ENTITIES SHOWN ON THE FACE OF THIS PLAT AND IS NON-TRANSFERABLE. THIS SURVEY IS CERTIFIED FOR THIS TRANSACTION ONLY.

ORIGINAL DOCUMENT SIZE: 8.5" X 11"



TOPOGRAPHIC
LOYALTY INNOVATION LEGACY

1400 EVERMAN PARKWAY, Ste. 146 • FT. WORTH, TEXAS 76140
TELEPHONE: (817) 744-7512 • FAX (817) 744-7564
2803 NORTH BIG SPRING • MIDLAND, TEXAS 79705
TELEPHONE: (432) 682-1653 OR (800) 787-1853 • FAX (432) 682-1743
WWW.TOPOGRAPHIC.COM