

District I
1625 N. French Dr., Hobbs, NM 88240
Phone: (575) 393-6161 Fax: (575) 393-0720
District II
811 S. First St., Artesia, NM 88210
Phone: (575) 748-1283 Fax: (575) 748-9720
District III
1000 Rio Brazos Road, Aztec, NM 87410
Phone: (505) 334-6178 Fax: (505) 334-6170
District IV
1220 S. St. Francis Dr., Santa Fe, NM 87505
Phone: (505) 476-3460 Fax: (505) 476-3462

State of New Mexico
Energy, Minerals & Natural Resources
Department
OIL CONSERVATION DIVISION
1220 South St. Francis Dr.
Santa Fe, NM 87505

HOBBS OCD FORM C-102
Revised August 1, 2011
Submit one copy to appropriate
District Office
APR 12 2019
RECEIVED
AMENDED REPORT

WELL LOCATION AND ACREAGE DEDICATION PLAT

¹ API Number 30-025- 45371	² Pool Code 98092	³ Pool Name WC-025 G-09 S243336I; Upper Wolfcamp
⁴ Property Code 322918	⁵ Property Name CARAVAN 28 STATE COM	⁶ Well Number #702H
⁷ GRID No. 7377	⁸ Operator Name EOG RESOURCES, INC.	⁹ Elevation 3518'

¹⁰Surface Location

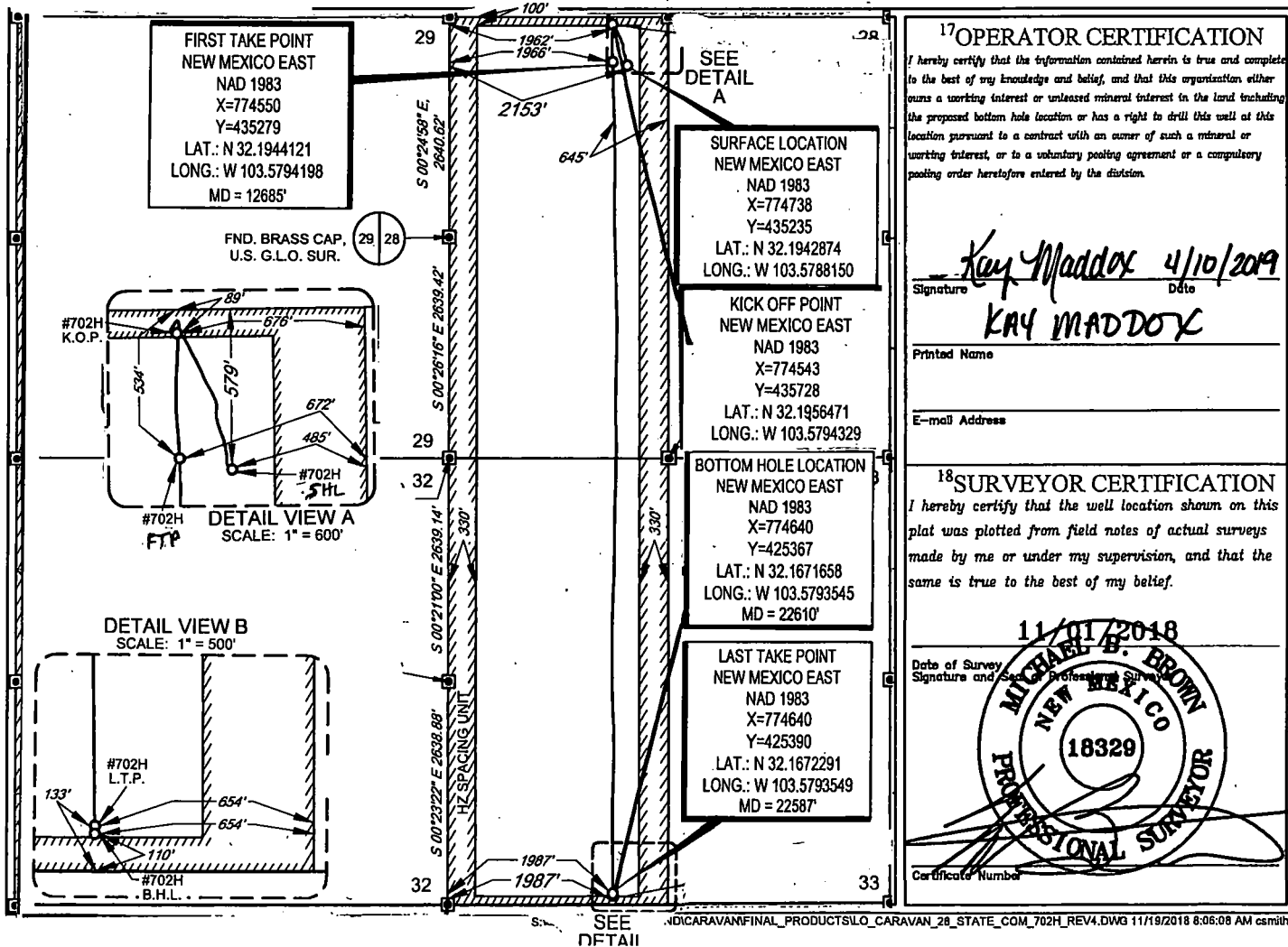
UL or lot no.	Section	Township	Range	Lot Idn	Feet from the	North/South line	Feet from the	East/West line	County
C	28	24-S	33-E	-	579'	NORTH	2153'	WEST	LEA

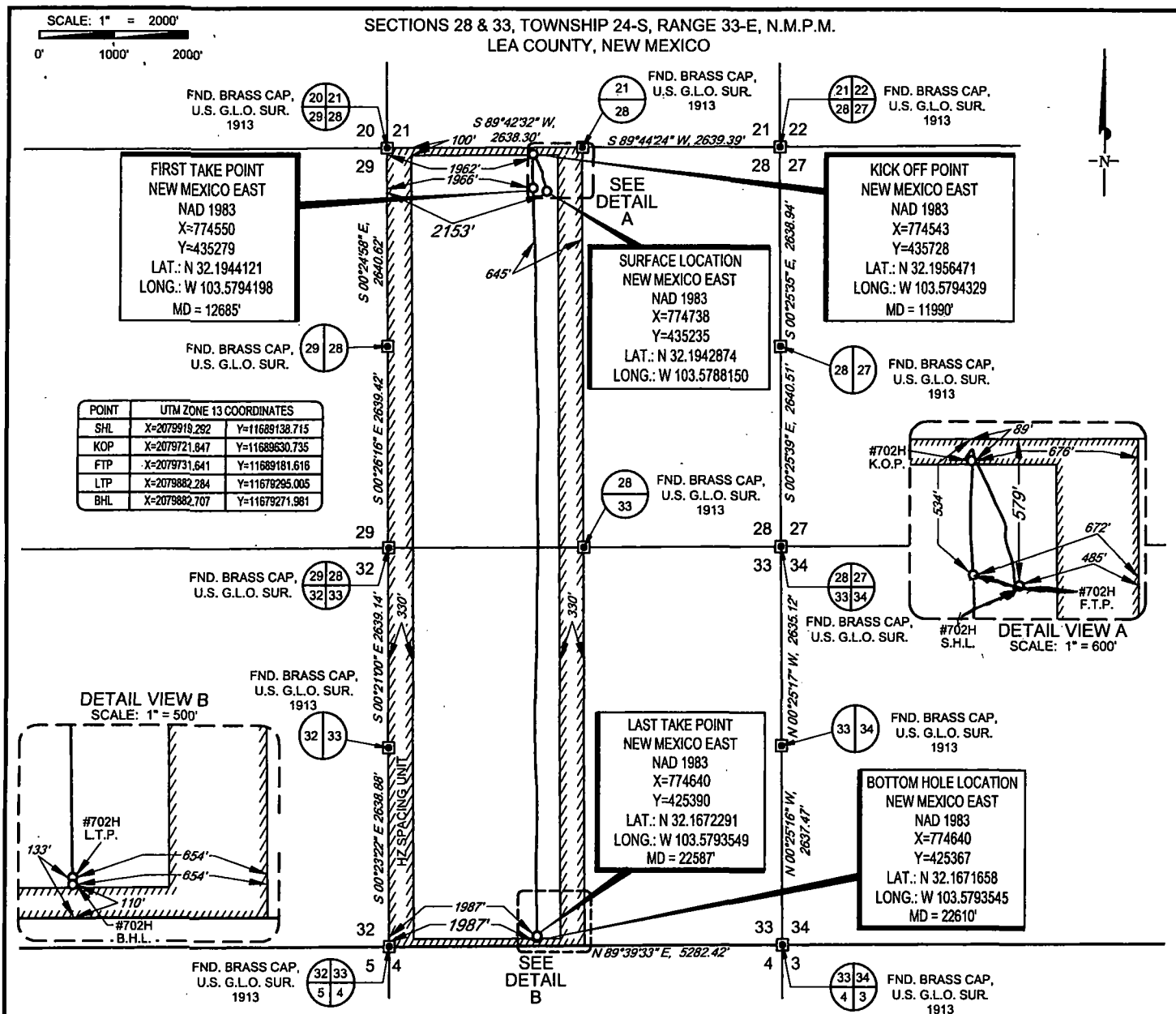
¹¹Bottom Hole Location If Different From Surface

UL or lot no.	Section	Township	Range	Lot Idn	Feet from the	North/South line	Feet from the	East/West line	County
N	33	24-S	33-E	-	110'	SOUTH	1987'	WEST	LEA

¹² Dedicated Acres 320	¹³ Joint or Infill	¹⁴ Consolidation Code	¹⁵ Order No.
---	-------------------------------	----------------------------------	-------------------------

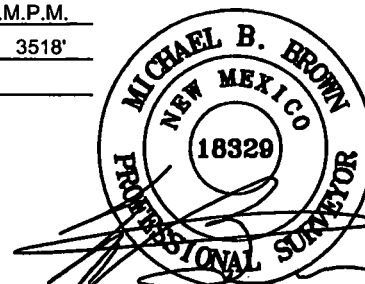
No allowable will be assigned to this completion until all interests have been consolidated or a non-standard unit has been approved by the division.





Geog resources, Inc.

TOPOGRAPHIC
LOYALTY INNOVATION LEGACY
1400 EVERMAN PARKWAY, Ste. 148 • FT. WORTH, TEXAS 76140
TELEPHONE: (817) 744-7512 • FAX: (817) 744-7554
2903 NORTH BIG SPRING • MIDLAND, TEXAS 79705
TELEPHONE: (432) 682-1653 OR (800) 767-1653 • FAX: (432) 682-1743
WWW.TOPOGRAPHIC.COM



Michael Blake Brown, P.S. No. 18329
MARCH 06, 2019

CARAVAN 28 STATE COM #702H AS-DRILLED	REVISION:		NOTES:
DATE: 03/06/2019			1. ORIGINAL DOCUMENT SIZE: 8.5" X 11" 2. ALL BEARINGS, DISTANCES, AND COORDINATE VALUES CONTAINED HEREIN ARE GRID BASED UPON THE NEW MEXICO COORDINATE SYSTEM OF 1983, EAST ZONE, U.S. SURVEY FEET. 3. THIS WELL LOCATION SHOWN HEREON HAS BEEN SURVEYED ON THE GROUND UNDER MY SUPERVISION AND PREPARED ACCORDING TO THE EVIDENCE FOUND AT THE TIME OF SURVEY, AND DATA PROVIDED BY EOG RESOURCES, INC. THIS CERTIFICATION IS MADE AND LIMITED TO THOSE PERSONS OR ENTITIES SHOWN ON THE FACE OF THIS PLAT AND IS NON-TRANSFERABLE. THIS SURVEY IS CERTIFIED FOR THIS TRANSACTION ONLY.
FILE:AD_CARAVAN_28_STATE_COM_702H			
DRAWN BY: H.B.			
SHEET: 1 OF 1			