

District I  
1625 N. French Dr., Hobbs, NM 88240  
Phone: (575) 393-6161 Fax: (575) 393-0720  
District II  
811 S. First St., Artesia, NM 88210  
Phone: (575) 748-1283 Fax: (575) 748-9720  
District III  
1000 Rio Brazos Road, Aztec, NM 87410  
Phone: (505) 334-6178 Fax: (505) 334-6170  
District IV  
1220 S. St. Francis Dr., Santa Fe, NM 87505  
Phone: (505) 476-3460 Fax: (505) 476-3462

State of New Mexico  
Energy, Minerals & Natural Resources  
Department  
OIL CONSERVATION DIVISION  
1220 South St. Francis Dr.  
Santa Fe, NM 87505

FORM C-102

Revised August 1, 2011

Submit one copy to appropriate

District Office

☐ AMENDED REPORT

WELL LOCATION AND ACREAGE DEDICATION PLAT

<sup>1</sup> API Number 30-025-45318	<sup>2</sup> Pool Code 98092	<sup>3</sup> Pool Name WC025-G09 S2433361; UPPER WOLF CAMP
<sup>4</sup> Property Code 319634	<sup>5</sup> Property Name MAMBA 30 STATE COM	<sup>6</sup> Well Number #706H
<sup>7</sup> OGRID No. 7377	<sup>8</sup> Operator Name EOG RESOURCES, INC.	<sup>9</sup> Elevation 3563'

<sup>10</sup>Surface Location

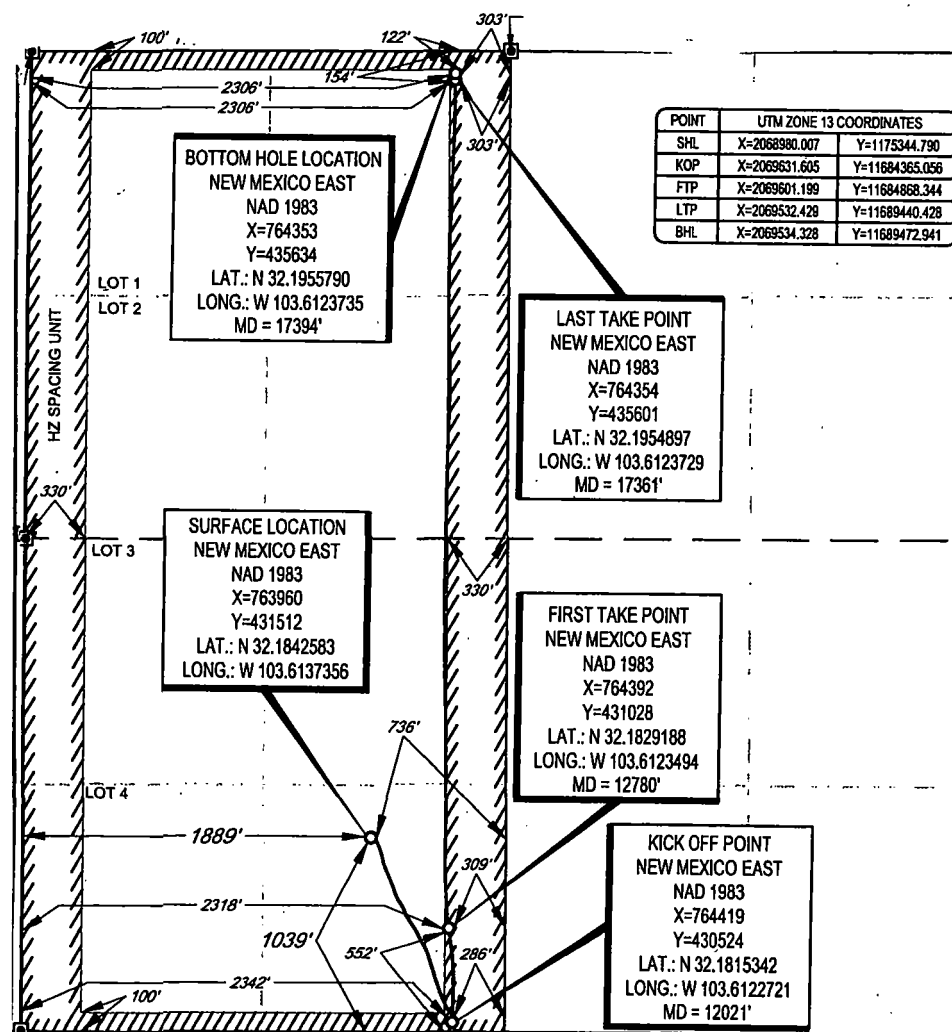
UL or lot no.	Section	Township	Range	Lot Idn	Feet from the	North/South line	Feet from the	East/West line	County
N	30	24-S	33-E	-	1039'	SOUTH	1889'	WEST	LEA

<sup>11</sup>Bottom Hole Location If Different From Surface

UL or lot no.	Section	Township	Range	Lot Idn	Feet from the	North/South line	Feet from the	East/West line	County
C	30	24-S	33-E	-	122	NORTH	2306'	WEST	LEA

<sup>12</sup> Dedicated Acres 316.72	<sup>13</sup> Joint or Infill	<sup>14</sup> Consolidation Code	<sup>15</sup> Order No.
---	-------------------------------	----------------------------------	-------------------------

No allowable will be assigned to this completion until all interests have been consolidated or a non-standard unit has been approved by the division.



**17 OPERATOR CERTIFICATION**  
I hereby certify that the information contained herein is true and complete to the best of my knowledge and belief, and that this organization either owns a working interest or unleased mineral interest in the land including the proposed bottom hole location or has a right to drill this well at this location pursuant to a contract with an owner of such a mineral or working interest, or to a voluntary pooling agreement or a compulsory pooling order heretofore entered by the division.

Signature: Kay Maddox Date: 4/29/19  
Printed Name: KAY MADDUX  
E-mail Address: \_\_\_\_\_

**18 SURVEYOR CERTIFICATION**  
I hereby certify that the well location shown on this plat was plotted from field notes of actual surveys made by me or under my supervision, and that the same is true to the best of my belief.

Date of Survey: 08/07/2018  
Signature: [Signature]  
Professional Surveyor: 18329  
Certificate Number: \_\_\_\_\_

SCALE: 1" = 1000'

0' 500' 1000'

SECTION 30, TOWNSHIP 24-S, RANGE 33-E, N.M.P.M.  
LEA COUNTY, NEW MEXICO

FND. BRASS CAP,  
U.S. G.L.O. SUR.  
1913

POINT	UTM ZONE 13 COORDINATES
SHL	X=2068990.007 Y=1175344.790
KOP	X=2069631.605 Y=11684365.056
FTP	X=2069601.199 Y=11684658.344
LTP	X=2069532.426 Y=11689440.428
BHL	X=2069534.328 Y=11689472.941

FND. BRASS CAP,  
U.S. G.L.O. SUR.  
1913

FND. BRASS CAP,  
U.S. G.L.O. SUR.  
1913

FND. BRASS CAP,  
U.S. G.L.O. SUR.  
1913

**BOTTOM HOLE LOCATION**  
NEW MEXICO EAST  
NAD 1983  
X=764353  
Y=435634  
LAT.: N 32.1955790  
LONG.: W 103.6123735  
MD = 17394'

**LAST TAKE POINT**  
NEW MEXICO EAST  
NAD 1983  
X=764354  
Y=435601  
LAT.: N 32.1954897  
LONG.: W 103.6123729  
MD = 17361'

**SURFACE LOCATION**  
NEW MEXICO EAST  
NAD 1983  
X=763960  
Y=431512  
LAT.: N 32.1842583  
LONG.: W 103.6137356

**FIRST TAKE POINT**  
NEW MEXICO EAST  
NAD 1983  
X=764392  
Y=431028  
LAT.: N 32.1829188  
LONG.: W 103.6123494  
MD = 12780'

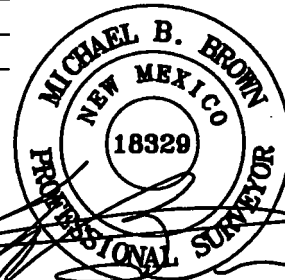
**KICK OFF POINT**  
NEW MEXICO EAST  
NAD 1983  
X=764419  
Y=430524  
LAT.: N 32.1815342  
LONG.: W 103.6122721  
MD = 12021'

LEASE NAME & WELL NO.: MAMBA 30 STATE COM #706H  
SECTION 30 TWP 24-S RGE 33-E SURVEY N.M.P.M.  
COUNTY LEA STATE NM ELEVATION 356'  
DESCRIPTION 1039' FSL & 1889' FWL



**TOPOGRAPHIC**  
LOYALTY INNOVATION LEGACY

1400 EVERMAN PARKWAY, Ste. 146 • FT. WORTH, TEXAS 76140  
TELEPHONE: (817) 744-7512 • FAX (817) 744-7554  
2903 NORTH BIG SPRING • MIDLAND, TEXAS 79705  
TELEPHONE: (432) 682-1653 OR (800) 767-1653 • FAX (432) 682-1743  
WWW.TOPOGRAPHIC.COM



Michael Blake Brown, P.S. No. 18329  
November 6, 2018

**eoog resources, Inc.**

MAMBA 30 STATE COM  
#706H  
AS-COMPLETED  
DATE: 04/15/19  
FILE: AD\_MAMBA\_30\_STATE\_COM\_706H  
DRAWN BY: TRG  
SHEET: 1 OF 1

REVISION:

NOTES:

1. ORIGINAL DOCUMENT SIZE: 8.5" X 11"
2. ALL BEARINGS, DISTANCES, AND COORDINATE VALUES CONTAINED HEREIN ARE GRID BASED UPON THE NEW MEXICO COORDINATE SYSTEM OF 1983, EAST ZONE, U.S. SURVEY FEET.
3. THIS WELL LOCATION SHOWN HEREON HAS BEEN SURVEYED ON THE GROUND UNDER MY SUPERVISION AND PREPARED ACCORDING TO THE EVIDENCE FOUND AT THE TIME OF SURVEY, AND DATA PROVIDED BY EOG RESOURCES, INC. THIS CERTIFICATION IS MADE AND LIMITED TO THOSE PERSONS OR ENTITIES SHOWN ON THE FACE OF THIS PLAT AND IS NON-TRANSFERABLE. THIS SURVEY IS CERTIFIED FOR THIS TRANSACTION ONLY.