

DISTRICT I  
1625 N. FRENCH DR., HOHES, NM 88240  
Phone: (978) 508-6161 Fax: (978) 528-0720

DISTRICT II  
811 S. FIRST ST., ARTESIA, NM 88210  
Phone: (575) 748-1888 Fax: (575) 748-9720

DISTRICT III  
1000 RIO BRAZOS RD., AZTEC, NM 87410  
Phone: (505) 334-6176 Fax: (505) 334-6170

DISTRICT IV  
1820 S. ST. FRANCIS DR., SANTA FE, NM 87505  
Phone: (505) 478-3460 Fax: (505) 478-3462

State of New Mexico  
Energy, Minerals & Natural Resources Department  
**OIL CONSERVATION DIVISION**  
1220 SOUTH ST. FRANCIS DR.  
Santa Fe, New Mexico 87505

Form C-102  
Revised August 1, 2011  
Submit one copy to appropriate  
District Office

☐ AMENDED REPORT

**WELL LOCATION AND ACREAGE DEDICATION PLAT**

API Number <b>30-025-45882</b>	Pool Code <b>98094</b>	Pool Name <b>BOBCAT DRAW UPR WOLFCAMP</b>
Property Code <b>325475</b>	Property Name <b>STRANGER 33 FED</b>	Well Number <b>7H</b>
OGRID No. <b>6137</b>	Operator Name <b>DEVON ENERGY PRODUCTION COMPANY, L.P.</b>	Elevation <b>3331.4'</b>

**Surface Location**

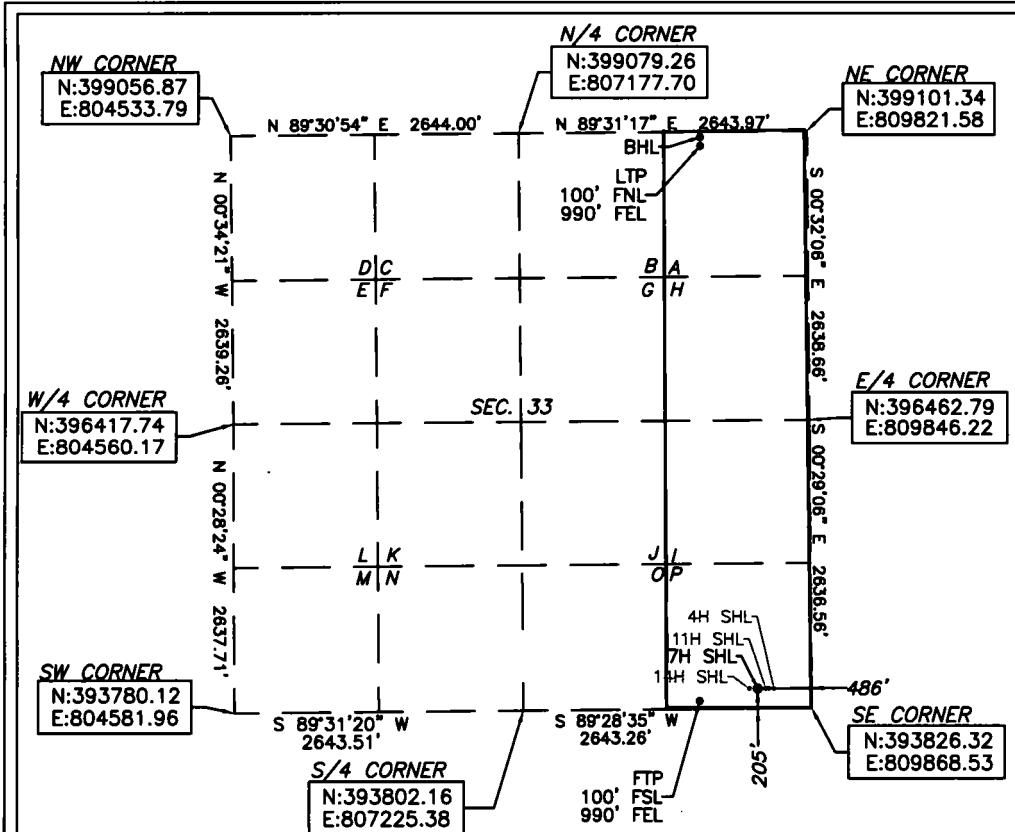
UL or lot No.	Section	Township	Range	Lot Idn	Feet from the	North/South line	Feet from the	East/West line	County
P	33	25-S	34-E	7	205	SOUTH	486	EAST	LEA

**Bottom Hole Location If Different From Surface**

UL or lot No.	Section	Township	Range	Lot Idn	Feet from the	North/South line	Feet from the	East/West line	County
A	33	25-S	34-E	A	20	NORTH	990	EAST	LEA

Dedicated Acres	Joint or Infill	Consolidation Code	Order No.
160			

NO ALLOWABLE WILL BE ASSIGNED TO THIS COMPLETION UNTIL ALL INTERESTS HAVE BEEN CONSOLIDATED  
OR A NON-STANDARD UNIT HAS BEEN APPROVED BY THE DIVISION



**STRANGER 33 FED 7H**  
ELEV: 3331.4'  
LAT: 32.0803038  
LONG: -103.4679035

**BOTTOM OF HOLE**  
LAT: 32.0941862  
LONG: -103.4695455

**FIRST TAKE POINT**  
LAT: 32.0800136  
LONG: -103.4695305

**LAST TAKE POINT**  
LAT: 32.0939663  
LONG: -103.4695451

Note: All bearings recited herein are based on the New Mexico State Plane Coordinate System, NAD 83, New Mexico East Zone 3001, US Survey Feet, all distances are grid.

**OPERATOR CERTIFICATION**

I hereby certify that the information herein is true and complete to the best of my knowledge and belief, and that this organization either owns a working interest or unleased mineral interest in the land including the proposed bottom hole location or has a right to drill this well at this location pursuant to a contract with an owner of such mineral or working interest, or to a voluntary pooling agreement or a compulsory pooling order heretofore entered by the division.

Rebecca Deal 10/25/2018  
Signature Date  
Rebecca Deal, Regulatory Analyst  
Printed Name  
rebecca.deal@dm.com  
E-mail Address

**SURVEYOR CERTIFICATION**

I hereby certify that the well location shown on this plat was plotted from field notes of actual surveys made by me or under my supervision, and that the same is true and correct to the best of my belief.

07/2018

Date of Survey

Signature & Seal of Professional Surveyor



08/16/18

Certificate No. 22404 B.L. LAMAN  
Date of Survey: 7/25/18 DRAWN BY: CM