

DISTRICT I
1626 N. PIERCE DR., HOBBES, NM 88240
Phone: (505) 555-6161 Fax: (505) 555-0720

DISTRICT II
511 S. FIRST ST., ARTESIA, NM 88210
Phone: (505) 748-1225 Fax: (505) 748-9720

DISTRICT III
1000 RIO BRAZOS RD., AZTEC, NM 87410
Phone: (505) 334-6170 Fax: (505) 334-6170

DISTRICT IV
1220 S. ST. FRANCIS DR., SANTA FE, NM 87505
Phone: (505) 476-3460 Fax: (505) 476-3460

State of New Mexico
Energy, Minerals & Natural Resources Department
OIL CONSERVATION DIVISION
1220 SOUTH ST. FRANCIS DR.
Santa Fe, New Mexico 87505

Form C-102
Revised August 1, 2011
Submit one copy to appropriate
District Office

☐ AMENDED REPORT

WELL LOCATION AND ACREAGE DEDICATION PLAT

API Number 70-025-48922	Pool Code 98135	Pool Name WC-025 G-09 S243310P; UPPER WOLFCAMP
Property Code 79747	Property Name BELL LAKE 19 STATE	Well Number 33H
GRID No. 6137	Operator Name DEVON ENERGY PRODUCTION COMPANY, L.P.	Elevation 3540.3'

Surface Location

UL or lot No.	Section	Township	Range	Lot Idn	Feet from the	North/South line	Feet from the	East/West line	County
P	19	24-S	33-E		281	SOUTH	1062	EAST	LEA

Bottom Hole Location If Different From Surface

UL or lot No.	Section	Township	Range	Lot Idn	Feet from the	North/South line	Feet from the	East/West line	County
A	19	24-S	33-E		20	NORTH	330	EAST	LEA

Dedicated Acres	Joint or Infill	Consolidation Code	Order No.
160			

**NO ALLOWABLE WILL BE ASSIGNED TO THIS COMPLETION UNTIL ALL INTERESTS HAVE BEEN CONSOLIDATED
OR A NON-STANDARD UNIT HAS BEEN APPROVED BY THE DIVISION**

OPERATOR CERTIFICATION

I hereby certify that the information herein is true and complete to the best of my knowledge and belief, and that this organization either owns a working interest or unleased mineral interest in the land including the proposed bottom hole location or has a right to drill this well at this location pursuant to a contract with an owner of such mineral or working interest, or to a voluntary pooling agreement or a compulsory pooling order heretofore entered by the division.

Rebecca Deal 5/9/2019
Signature Date

Rebecca Deal, Regulatory Analyst

Printed Name

rebecca.deal@dm.com

E-mail Address

SURVEYOR CERTIFICATION

I hereby certify that the well location shown on this plat was plotted from field notes of actual surveys made by me or under my supervision, and that the same is true and correct to the best of my belief.

1/2019

Date of Survey

Signature & Seal of Professional Surveyor



04/09/19

Certificate No. 22404

B. L. LAMAN

DRAWN BY: CM

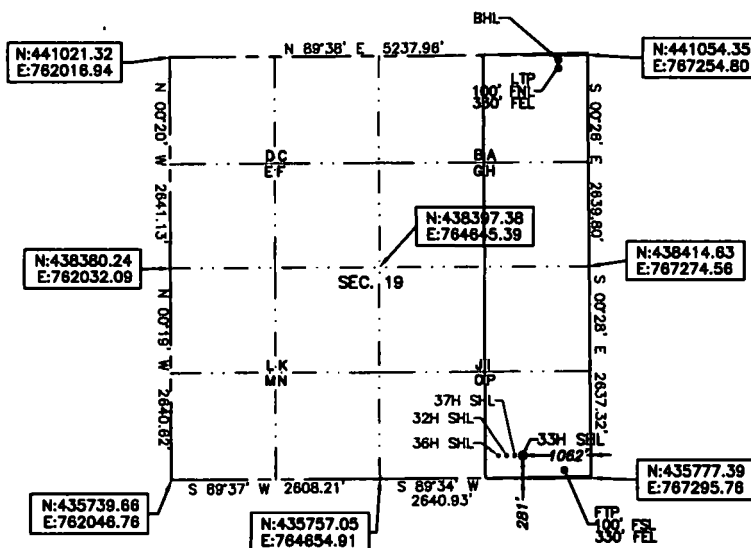
BELL LAKE 19 STATE 33H
ELEV. 3540.3'
LAT: 32.198689
LON: -103.606293
N: 436050.20
E: 766231.53

FIRST TAKE POINT
LAT: 32.198194
LON: -103.603926
N: 435874.85
E: 766964.97

BOTTOM OF HOLE
LAT: 32.210371
LON: -103.603942
N: 441032.27
E: 766924.86

LAST TAKE POINT
LAT: 32.210151
LON: -103.603942
N: 440852.27
E: 766925.55

SEC. 19 CENTER POINT
N: 438397.38
E: 764645.39



Note: All bearings recited herein are based on the New Mexico State Plane Coordinate System, NAD 83, New Mexico East Zone 3001, US Survey Feet, all distances are grid.