

District I
1625 N. French Dr., Hobbs, NM 88240
Phone: (575) 393-6161 Fax: (575) 393-0720
District II
811 S. First St., Artesia, NM 88210
Phone: (575) 748-1283 Fax: (575) 748-9720
District III
1000 Rio Brazos Road, Aztec, NM 87410
Phone: (505) 334-6178 Fax: (505) 334-6170
District IV
1220 S. St. Francis Dr., Santa Fe, NM 87505
Phone: (505) 476-3460 Fax: (505) 476-3462

State of New Mexico
Energy, Minerals & Natural Resources Department
CONSERVATION DIVISION
1220 South St. Francis Dr.
Santa Fe, NM 87505

Form C-102
Revised August 1, 2011
Submit one copy to appropriate
District Office

☐ AMENDED REPORT

WELL LOCATION AND ACREAGE DEDICATION PLAT

¹ API Number 30-025-45375	² Pool Code 2220	³ Pool Name Antelope Ridge; Wolfcamp
⁴ Property Code	⁵ Property Name SOLOMON FEDERAL COM	⁶ Well Number 709H
⁷ OGRID No. 372165	⁸ Operator Name CENTENNIAL RESOURCE PRODUCTION, LLC	⁹ Elevation 3494.6'

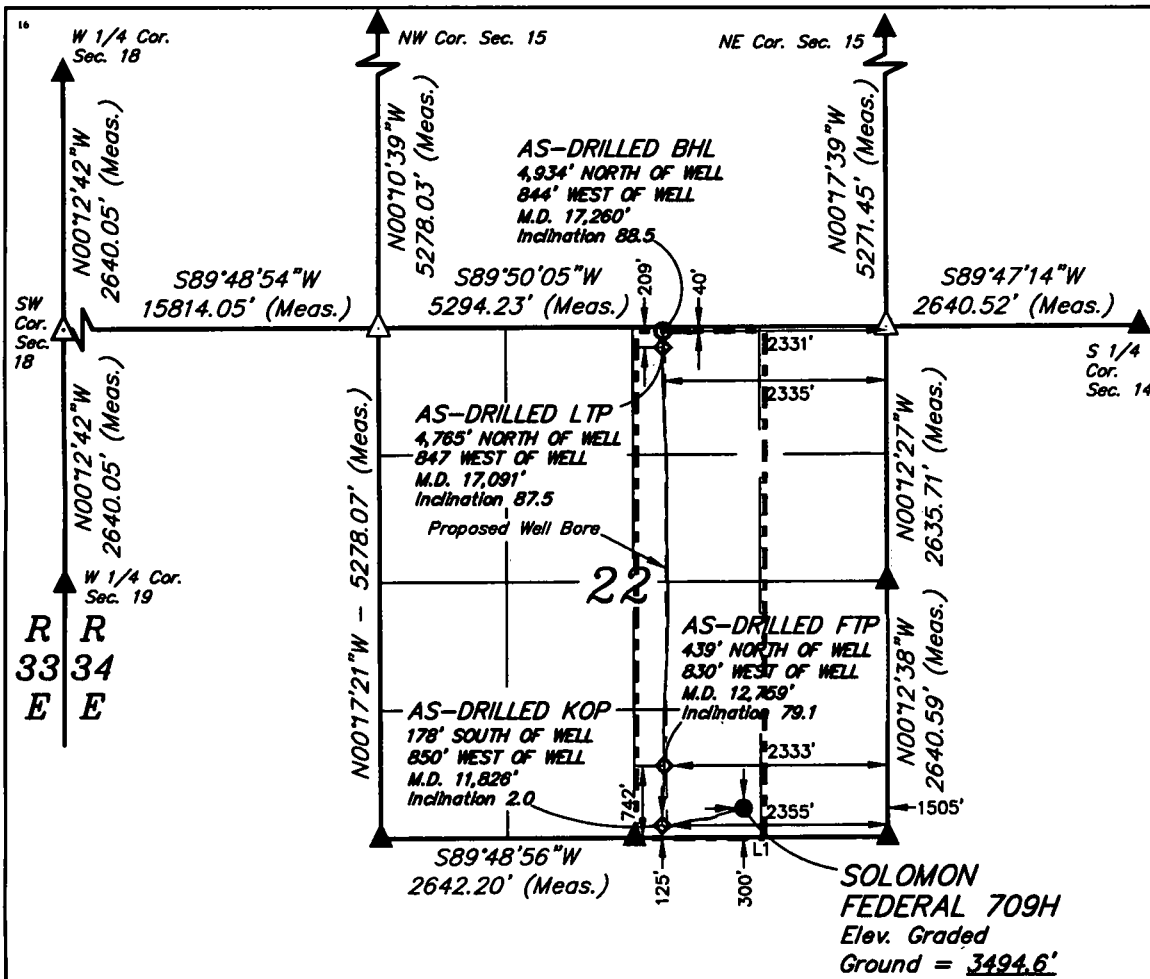
¹⁰ Surface Location

UL or lot no. O	Section 22	Township 24S	Range 34E	Lot Idn	Feet from the 300	North/South line SOUTH	Feet from the 1505	East/West line EAST	County LEA
--------------------	---------------	-----------------	--------------	---------	----------------------	---------------------------	-----------------------	------------------------	---------------

¹¹ Bottom Hole Location If Different From Surface

UL or lot no. B	Section 22	Township 24S	Range 34E	Lot Idn	Feet from the 40	North/South line NORTH	Feet from the 2331	East/West line EAST	County LEA
¹² Dedicated Acres 160	¹³ Joint or Infill	¹⁴ Consolidation Code	¹⁵ Order No.						

No allowable will be assigned to this completion until all interests have been consolidated or a non-standard unit has been approved by the division.



¹⁷ OPERATOR CERTIFICATION

I hereby certify that the information contained herein is true and complete to the best of my knowledge and belief, and that this organization either owns a working interest or unleased mineral interest in the land including the proposed bottom hole location or has a right to drill this well at this location pursuant to a contract with an owner of such a mineral or working interest, or to a voluntary pooling agreement or a compulsory pooling order heretofore entered by the division.

Signature: *K. C.* Date: 5/6/19

Printed Name: Kanicia Castillo

E-mail Address: Kanicia.castillo@cdevinc.com

LINE TABLE

LINE	DIRECTION	LENGTH
L1	S89°48'56"W	2644.65'

NAD 83 (AS-DRILLED SHL)
LATITUDE = 32°11'47.78" (32.196606°)
LONGITUDE = 103°27'14.93" (103.454148°)
STATE PLANE NAD 83 (N.M. EAST)
Y: 436371.43' X: 813295.89'
UTM, NAD 83 (ZONE 13)
Y: 11690514.06' X: 2118464.38'

NAD 83 (AS-DRILLED KOP)
LATITUDE = 32°11'46.05" (32.196125°)
LONGITUDE = 103°27'24.83" (103.456896°)
STATE PLANE NAD 83 (N.M. EAST)
Y: 436189.65' X: 812447.16'
UTM, NAD 83 (ZONE 13)
Y: 11690327.05' X: 2117616.90'

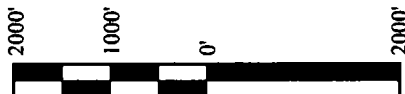
NAD 83 (AS-DRILLED FTP)
LATITUDE = 32°11'52.16" (32.197822°)
LONGITUDE = 103°27'24.57" (103.456825°)
STATE PLANE NAD 83 (N.M. EAST)
Y: 436807.05' X: 812464.38'
UTM, NAD 83 (ZONE 13)
Y: 11690944.46' X: 2117630.29'

NOTE:

- Distances referenced on plat to section lines are perpendicular.
- Basis of Bearing is a Transverse Mercator Projection with a Central Meridian of W103°53'00"

NAD 83 (AS-DRILLED LTP)
LATITUDE = 32°12'34.96" (32.209711°)
LONGITUDE = 103°27'24.57" (103.456824°)
STATE PLANE NAD 83 (N.M. EAST)
Y: 441132.39' X: 812429.15'
UTM, NAD 83 (ZONE 13)
Y: 11695268.93' X: 2117568.24'

NAD 83 (AS-DRILLED BHL)
LATITUDE = 32°12'36.63" (32.210175°)
LONGITUDE = 103°27'24.52" (103.456812°)
STATE PLANE NAD 83 (N.M. EAST)
Y: 441301.27' X: 812431.72'
UTM, NAD 83 (ZONE 13)
Y: 11695437.80' X: 2117569.76'



SCALE
DRAWN BY: C.M.T. 04-17-19

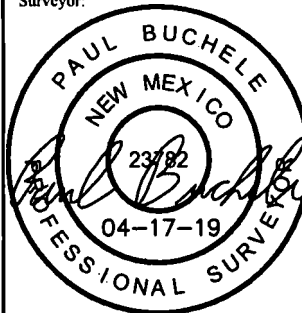
- = AS-DRILLED SHL
- ◆ = AS-DRILLED KOP/TAKE POINT
- = AS-DRILLED BHL
- ▲ = SECTION CORNER LOCATED
- △ = SECTION CORNER RE-ESTABLISHED.
(Not Set on Ground.)

¹⁸ SURVEYOR CERTIFICATION

I hereby certify that the well location shown on this plat was plotted from field notes of actual surveys made by me or under my supervision, and that the same is true and correct to the best of my belief.

December 10, 2018

Date of Survey
Signature and Seal of Professional Surveyor:



Certificate Number: