

District I
1625 N. French Dr., Hobbs, NM 88240
Phone: (575) 393-6161 Fax: (575) 393-0720
District II
811 S. First St., Artesia, NM 88210
Phone: (575) 748-1283 Fax: (575) 748-9720
District III
1000 Rio Brazos Road, Aztec, NM 87410
Phone: (505) 334-6178 Fax: (505) 334-6170
District IV
1220 S. St. Francis Dr., Santa Fe, NM 87505
Phone: (505) 476-3460 Fax: (505) 476-3462

State of New Mexico
Energy, Minerals & Natural Resources Department
OIL CONSERVATION DIVISION
1220 South St. Francis Dr.
Santa Fe, NM 87505

HOBBS OCD
MAY 14 2019
RECEIVED

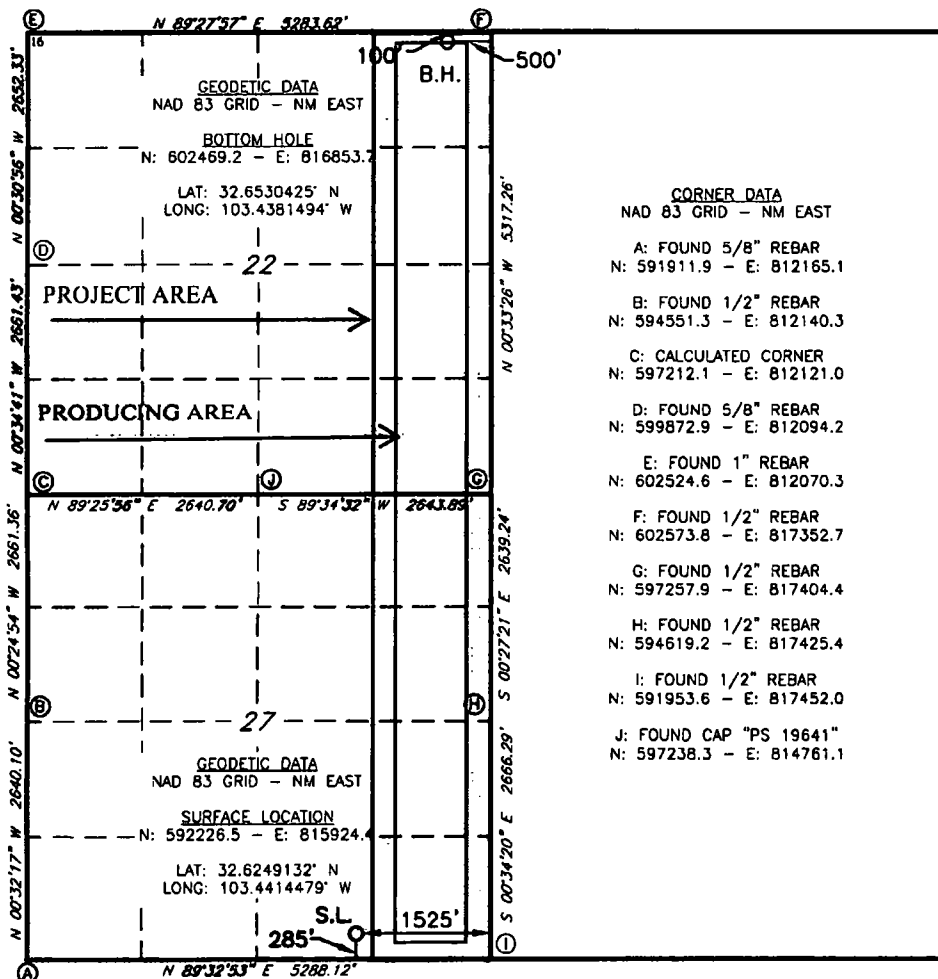
Form C-102
Revised August 1, 2011
Submit one copy to appropriate
District Office

☐ AMENDED REPORT

WELL LOCATION AND ACREAGE DEDICATION PLAT

1 API Number 30-025-95970		2 Pool Code 49680		3 Pool Name PEARL; BONE SPRING	
4 Property Code 925651		5 Property Name BEEFMASTER 27/22 B2PA STATE COM			6 Well Number 1H
7 OGRID NO. 14744		8 Operator Name MEWBOURNE OIL COMPANY			9 Elevation 3706'
10 Surface Location					
UL or lot no. 0	Section 27	Township 19S	Range 35E	Lot Idn 285	Feet from the SOUTH
Feet From the 1525		East/West line EAST		County LEA	
11 Bottom Hole Location If Different From Surface					
UL or lot no. A	Section 22	Township 19S	Range 35E	Lot Idn 100	Feet from the NORTH
Feet From the 500		East/West line EAST		County LEA	
12 Dedicated Acres 320		13 Joint or Infill		14 Consolidation Code	
15 Order No.					

No allowable will be assigned to this completion until all interest have been consolidated or a non-standard unit has been approved by the division.



17 OPERATOR CERTIFICATION	
I hereby certify that the information contained herein is true and complete to the best of my knowledge and belief, and that this organization either owns a working interest or undivided mineral interest in the land including the proposed bottom hole location or has a right to drill this well at this location pursuant to a contract with an owner of such a mineral or working interest, or to a voluntary pooling agreement or a compulsory pooling order previously entered by the division.	
Signature Bradley Bishop	Date 4-9-19
Printed Name BRADLEY BISHOP	
E-mail Address BBISHOP@MEWBOURNE.COM	
18 SURVEYOR CERTIFICATION	
I hereby certify that the well location shown on this plat was plotted from field notes of actual surveys made by me or under my supervision, and that the same is true and correct to the best of my belief.	
3-25-2019	
Date of Survey	
Signature and Seal of Professional Surveyor ROBERT M. HOWETT	
19680	
Certificate Number	

LS19030379