

DISTRICT I
1825 N. French Dr., Hobbs, NM 88240
Phone: (505) 393-8161 Fax: (505) 393-0720

DISTRICT II
811 S. First St., Artesia, NM 88210
Phone: (505) 748-1253 Fax: (505) 748-0720

DISTRICT III
1000 Rio Brazos Rd., Aztec, NM 87410
Phone: (505) 334-8178 Fax: (505) 334-8170

DISTRICT IV
1820 S. St. Francis Dr., Santa Fe, NM 87505
Phone: (505) 478-3460 Fax: (505) 478-3463

State of New Mexico
Energy, Minerals & Natural Resources Department

OIL CONSERVATION DIVISION
HOBBS OCD
1220 South St. Frances Dr.
Santa Fe, NM 87505

Form C-102
Revised August 1, 2011
Submit one copy to appropriate
District Office

"AS DRILLED"

XX AMENDED REPORT

RECEIVED

WELL LOCATION AND ACREAGE DEDICATION PLAT

API Number 30-025-45211	Pool Code 98247	Pool Name WC-025 G-08 S203435D; WC
Property Code 302802	Property Name LEA UNIT	Well Number 100H
OGRD No. 240974	Operator Name LEGACY RESERVES OPERATING LP	Elevation 3665'

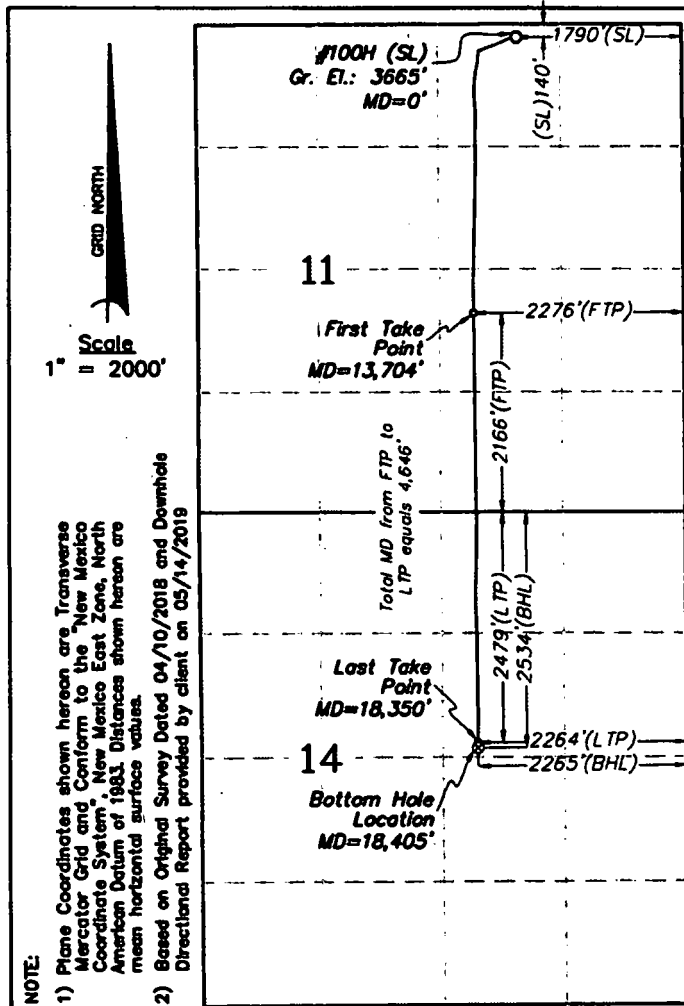
Surface Location

UL or lot No.	Section	Township	Range	Lot Idn	Feet from the	North/South line	Feet from the	East/West line	County
B	11	20 S	34 E		140	NORTH	1790	EAST	LEA

Bottom Hole Location If Different From Surface

UL or lot No.	Section	Township	Range	Lot Idn	Feet from the	North/South line	Feet from the	East/West line	County
G	14	20 S	34 E		2534	NORTH	2265	EAST	LEA
Dedicated Acres 240	Joint or Infill	Consolidation Code	Order No.						

NO ALLOWABLE WILL BE ASSIGNED TO THIS COMPLETION UNTIL ALL INTERESTS HAVE BEEN CONSOLIDATED OR A NON-STANDARD UNIT HAS BEEN APPROVED BY THE DIVISION



SURFACE LOCATION
(NAD83)

Plane Coordinate
X = 789,317.0
Y = 580,948.9
Geodetic (D.D.)
32.59450115° N
103.52814107° W

FIRST TAKE POINT
(NAD83)

Plane Coordinate
X = 788,854.32
Y = 577,973.68
Geodetic (D.D.)
32.58633338° N
103.52971631° W

LAST TAKE POINT
(NAD83)

Plane Coordinate
X = 788,901.99
Y = 573,328.61
Geodetic (D.D.)
32.57356549° N
103.52967545° W

BOTTOM HOLE LOCATION
& LAST TAKE POINT
(NAD83)

Plane Coordinate
X = 788,902.28
Y = 573,273.12
Geodetic (D.D.)
32.57341297° N
103.52967588° W

OPERATOR CERTIFICATION

I hereby certify that the information contained herein is true and complete to the best of my knowledge and belief, and that this organization either owns a working interest or undivided interest in the land including the proposed bottom hole location or has a right to drill this well of this location pursuant to a contract with an owner of such a mineral or working interest, or to a voluntary pooling agreement or a compulsory pooling order heretofore entered by the Division.

Laura Pina 05/22/19
Signature Date

Laura Pina
Printed Name

lpina@legacylp.com
E-mail Address

SURVEYOR CERTIFICATION

I hereby certify that the well location shown on this plat was plotted from field notes of actual surveys made by me or under my supervision, and that the same is true and correct to the best of my belief.

December 20, 2017

Date of Survey

Lindsay Gyax
Signature & Seal
Lindsay Gyax
Professional Surveyor
23263
05-16-19

W.O. Num. 2019-0297

Certificate No. Lindsay Gyax 23263