

District I  
1625 N. French Dr., Hobbs, NM 88240  
Phone: (505) 393-6161 Fax: (505) 393-0720  
District II  
811 S. First St., Artesia, NM 88210  
Phone: (505) 748-1283 Fax: (505) 748-9720  
District III  
1000 Rio Brazos Road, Aztec, NM 87410  
Phone: (505) 334-6178 Fax: (505) 334-6170  
District IV  
1220 S. St. Francis Dr., Santa Fe, NM 87505  
Phone: (505) 476-3460 Fax: (505) 476-3462

State of New Mexico  
Energy, Minerals & Natural Resources  
Department  
OIL CONSERVATION DIVISION  
1220 South St. Francis  
Santa Fe, NM 87505

FORM C-102

Revised August 1, 2011

Submit one copy to appropriate

District Office

☒ AMENDED REPORT

WELL LOCATION AND ACREAGE DEDICATION PLAT

<sup>1</sup> API Number 30-025-44346	<sup>2</sup> Pool Code 98097	<sup>3</sup> Pool Name Sanders Tank; Upper Wolfcamp
<sup>4</sup> Property Code 320563	<sup>5</sup> Property Name MAGNOLIA 15 FED COM	<sup>6</sup> Well Number #705H
<sup>7</sup> GRID No. 7377	<sup>8</sup> Operator Name EOG RESOURCES, INC.	<sup>9</sup> Elevation 3301'

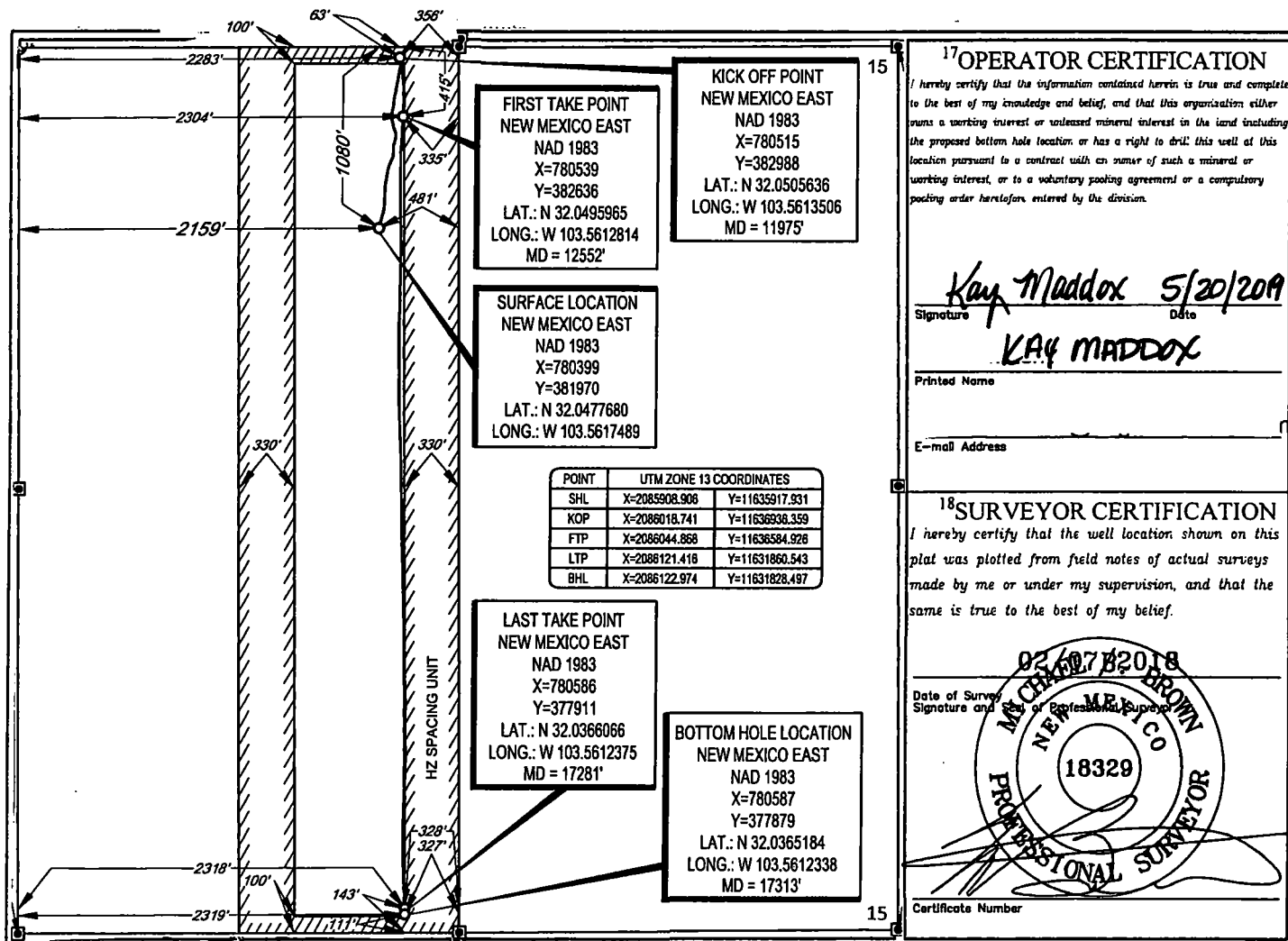
<sup>10</sup>Surface Location

UL or lot no.	Section	Township	Range	Lot Idn	Feet from the	North/South line	Feet from the	East/West line	County
C	15	26-S	33-E	-	1080'	NORTH	2159'	WEST	LEA

UL or lot no.	Section	Township	Range	Lot Idn	Feet from the	North/South line	Feet from the	East/West line	County
N	15	26-S	33-E	-	111'	SOUTH	2319'	WEST	LEA

<sup>12</sup> Dedicated Acres 160.00	<sup>13</sup> Joint or Infill	<sup>14</sup> Consolidation Code	<sup>15</sup> Order No.
---	-------------------------------	----------------------------------	-------------------------

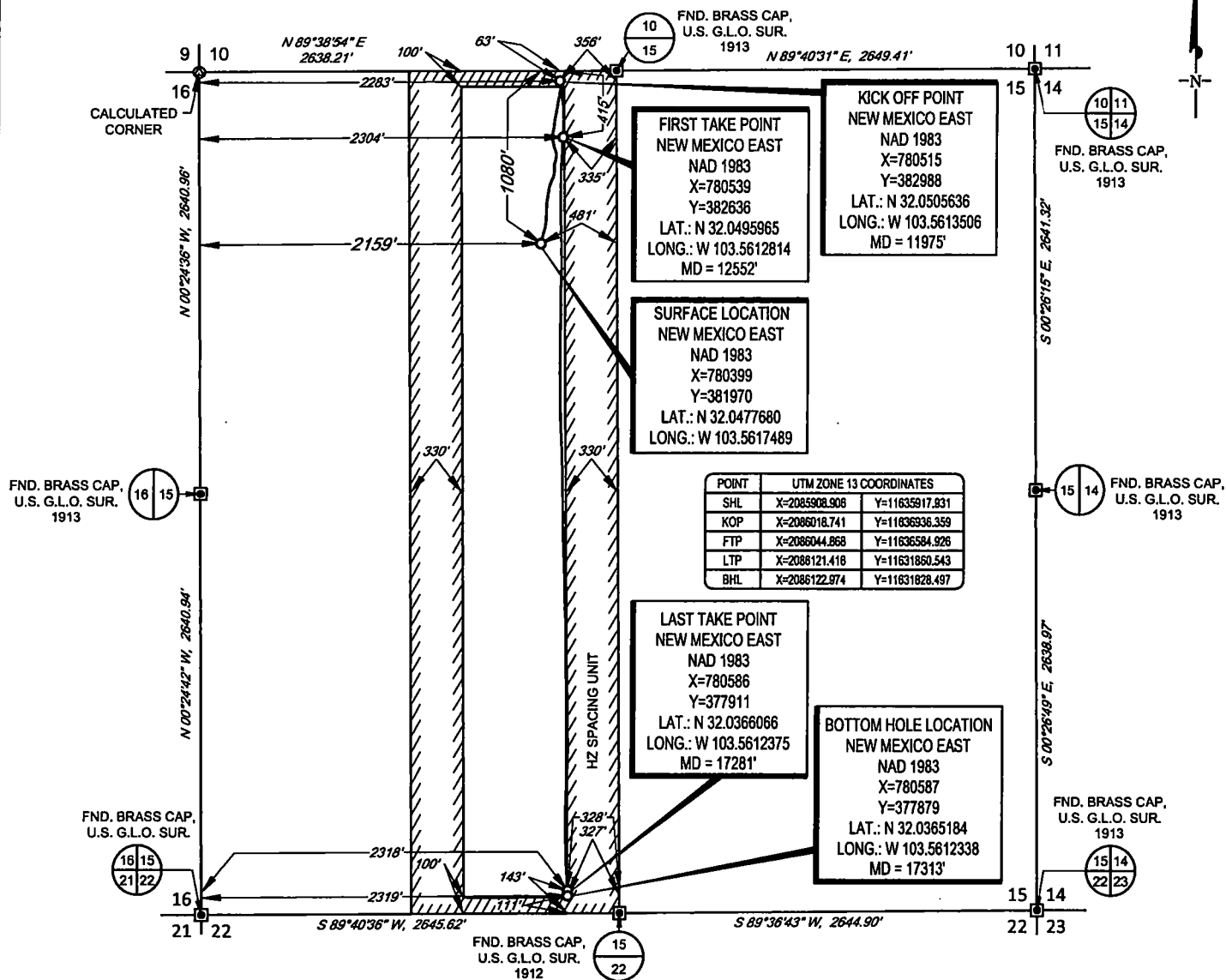
No allowable will be assigned to this completion until all interests have been consolidated or a non-standard unit has been approved by the division.



SCALE: 1" = 1000'

0' 500' 1000'

SECTION 15, TOWNSHIP 26-S, RANGE 33-E, N.M.P.M.  
LEA COUNTY, NEW MEXICO

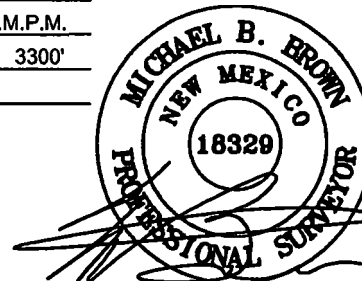


LEASE NAME & WELL NO.: MAGNOLIA 15 FED COM #705H  
SECTION 15 TWP 26-S RGE 33-E SURVEY N.M.P.M.  
COUNTY LEA STATE NM ELEVATION 3300'  
DESCRIPTION 1080' FNL & 2159' FWL



**TOPOGRAPHIC**  
LOYALTY INNOVATION LEGACY

1400 EVERMAN PARKWAY, Ste. 148 • FT. WORTH, TEXAS 76140  
TELEPHONE: (817) 744-7512 • FAX (817) 744-7554  
TEXAS FIRM REGISTRATION NO. 10042504  
WWW.TOPOGRAPHIC.COM



Michael Blake Brown, P.S. No. 18329  
April 25, 2019

**Geog resources, Inc.**

MAGNOLIA 15 FED COM #705H AS-COMPLETED  DATE: 04/25/2019 FILE: AD_MAGNOLIA_15_FED_COM_705H DRAWN BY: MML SHEET: 1 OF 1	REVISION:	NOTES:
		1. ORIGINAL DOCUMENT SIZE: 8.5" X 11"
		2. ALL BEARINGS, DISTANCES, AND COORDINATE VALUES CONTAINED HEREIN ARE GRID BASED UPON THE NEW MEXICO COORDINATE SYSTEM, EAST ZONE, U.S. SURVEY FEET, NORTH AMERICAN DATUM 1983.
		3. THIS WELL LOCATION SHOWN HEREON HAS BEEN SURVEYED ON THE GROUND UNDER MY SUPERVISION AND PREPARED ACCORDING TO THE EVIDENCE FOUND AT THE TIME OF SURVEY, AND DATA PROVIDED BY EOG RESOURCES, INC. THIS CERTIFICATION IS MADE AND LIMITED TO THOSE PERSONS OR ENTITIES SHOWN ON THE FACE OF THIS PLAT AND IS NON-TRANSFERABLE. THIS SURVEY IS CERTIFIED FOR THIS TRANSACTION ONLY.