

District I
1625 N. French Dr., Hobbs, NM 88240
Phone: (575) 393-6161 Fax: (575) 393-0720
District II
811 S. First St., Artesia, NM 88210
Phone: (575) 748-1283 Fax: (575) 748-9720
District III
1000 Rio Brazos Road, Aztec, NM 87410
Phone: (505) 334-6178 Fax: (505) 334-6170
District IV
1220 S. St. Francis Dr., Santa Fe, NM 87505
Phone: (505) 476-3460 Fax: (505) 476-3462

State of New Mexico
Energy, Minerals & Natural Resources Department
OIL CONSERVATION DIVISION
1220 South St. Francis Dr.
Santa Fe, NM 87505

Form C-102
Revised August 1, 2011
Submit one copy to appropriate
District Office

☐ AMENDED REPORT

WELL LOCATION AND ACREAGE DEDICATION PLAT

APL Number 3005-46021		Pool Code 96553	Pool Name Ojo Chiso; Bone Spring
Property Code 725659	Property Name CARNE ASADA STATE COM		Well Number 501H
OCRID No. 372165	Operator Name CENTENNIAL RESOURCE PRODUCTION, LLC		Elevation 3635.4'

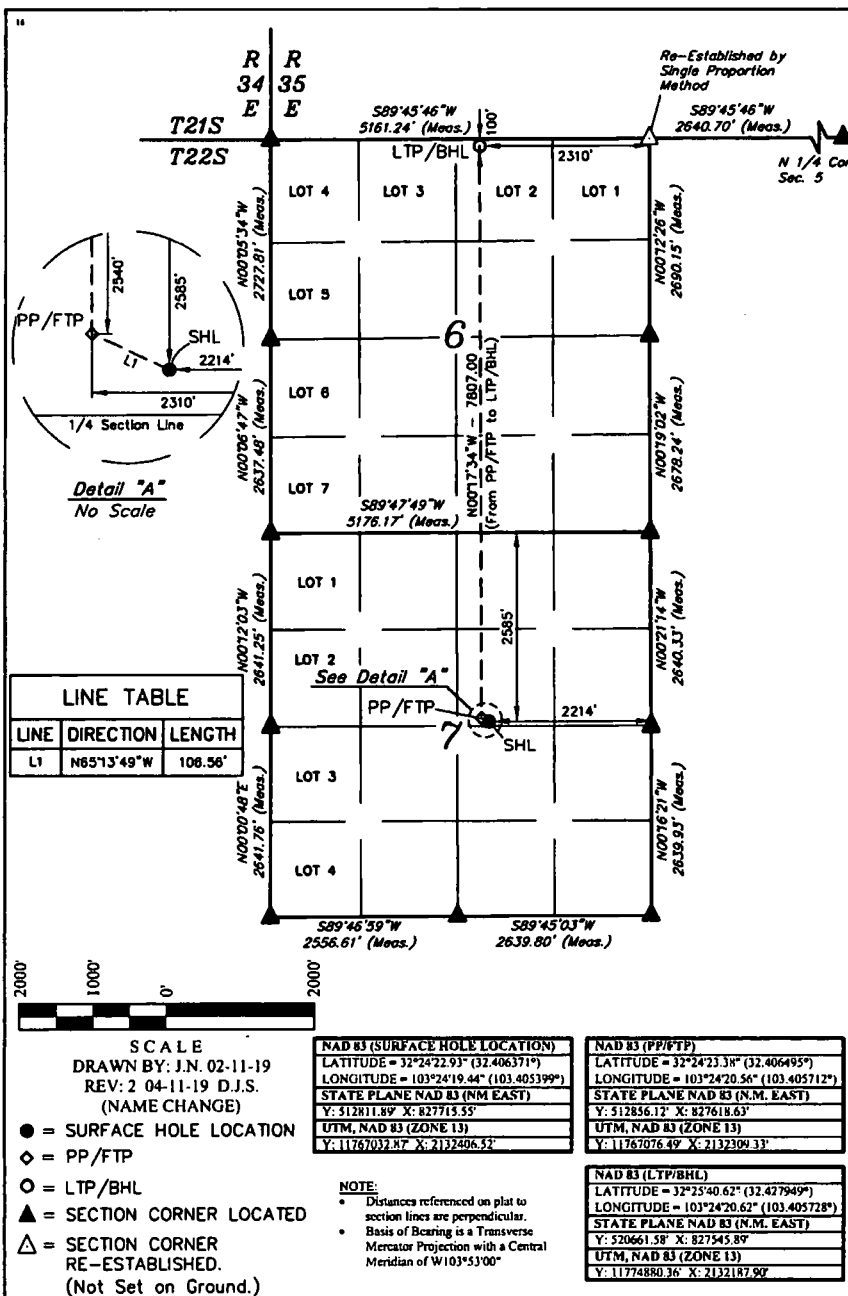
"Surface Location"

UL or lot no.	Section	Township	Range	Lot Idn	Feet from the	North/South line	Feet from the	East/West line	County
G	7	22S	35E		2585	NORTH	2214	EAST	LEA

"Bottom Hole Location If Different From Surface"

UL or lot no.	Section	Township	Range	Lot Idn	Feet from the	North/South line	Feet from the	East/West line	County
2	6	22S	35E		100	NORTH	2310	EAST	LEA
Dedicated Acres 242.45		Joint or fee title		Consolidation Code		Order No.			

No allowable will be assigned to this completion until all interests have been consolidated or a non-standard unit has been approved by the division.



"OPERATOR CERTIFICATION"

I hereby certify that the information contained herein is true and complete to the best of my knowledge and belief, and that this organization either owns a working interest or unleased mineral interest in the land including the proposed bottom hole location or has a right to drill this well at this location pursuant to a contract with an owner of such a mineral or working interest, or to a voluntary pooling agreement or a compulsory pooling order heretofore entered by the division.

Signature **Sarah Ferreyros** Date **5/14/19**

Printed Name **Sarah Ferreyros**

E-mail Address **Sarah.Ferreyros@cdanr.com**

"SURVEYOR CERTIFICATION"

I hereby certify that the well location shown on this plat was plotted from field notes of actual surveys made by me or under my supervision, and that the same is true and correct to the best of my belief.

February 08, 2019

Date of Survey
Signature and Seal of Professional Surveyor:



Certificate Number: