

DISTRICT I
1625 N. FRENCH DR., HOBBBS, NM 88240
Phone: (505) 853-6181 Fax: (505) 853-0720

DISTRICT II
811 S. FIRST ST., ARTESIA, NM 88210
Phone: (505) 748-1223 Fax: (505) 748-0720

DISTRICT III
1000 RIO BRAZOS RD., AZTEC, NM 87410
Phone: (505) 334-8178 Fax: (505) 334-8170

DISTRICT IV
1220 S. ST. FRANCIS DR., SANTA FE, NM 87505
Phone: (505) 476-3460 Fax: (505) 476-3463

State of New Mexico
Energy, Minerals & Natural Resources Department
OIL CONSERVATION DIVISION
1220 SOUTH ST. FRANCIS DR.
Santa Fe, New Mexico 87505

Form C-102

Revised August 1, 2011

Submit one copy to appropriate

District Office

MAY 22 2019

☐ AMENDED REPORT

WELL LOCATION AND ACREAGE DEDICATION PLAT

API Number 30-05-16-003	Pool Code 98094	Pool Name BOBCAT DRAW; UPR WOLFCAMP
Property Code 725475	Property Name STRANGER 33 FED	Well Number 14H
OGRID No. 6137	Operator Name DEVON ENERGY PRODUCTION COMPANY, L.P.	Elevation 3332.2'

Surface Location

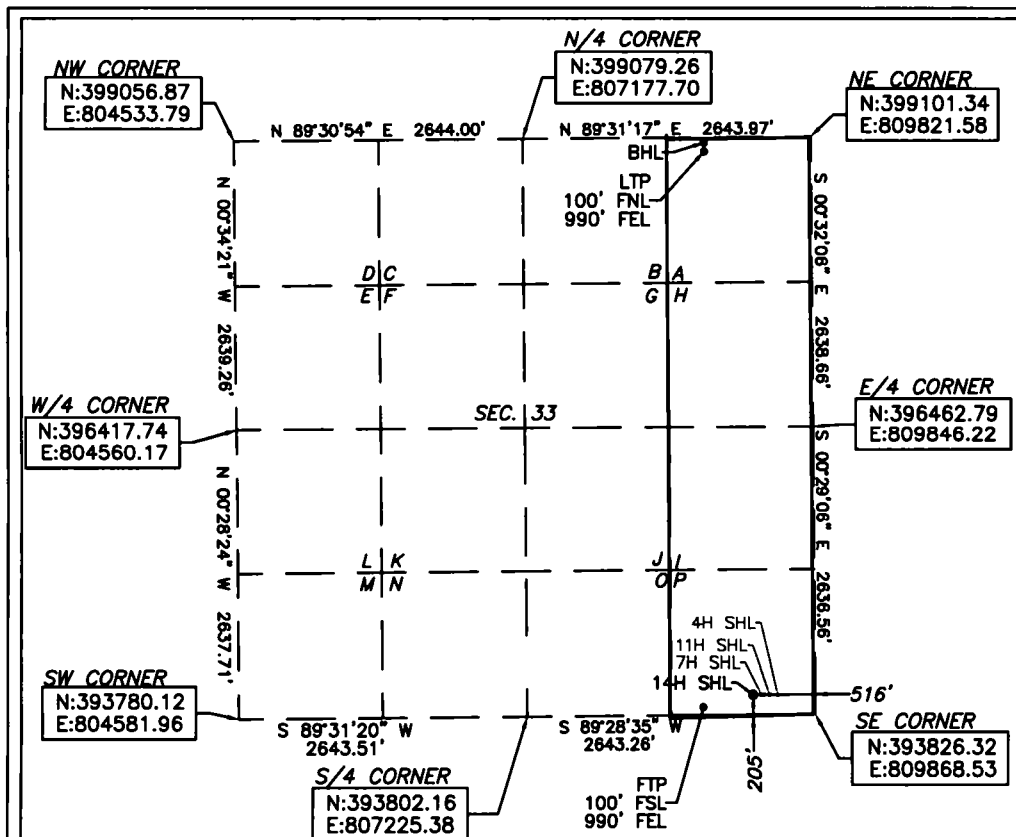
UL or lot No.	Section	Township	Range	Lot Idn	Feet from the	North/South line	Feet from the	East/West line	County
P	33	25-S	34-E		205	SOUTH	516	EAST	LEA

Bottom Hole Location If Different From Surface

UL or lot No.	Section	Township	Range	Lot Idn	Feet from the	North/South line	Feet from the	East/West line	County
A	33	25-S	34-E		20	NORTH	990	EAST	LEA

Dedicated Acres 160	Joint or Infill	Consolidation Code	Order No.
-------------------------------	-----------------	--------------------	-----------

NO ALLOWABLE WILL BE ASSIGNED TO THIS COMPLETION UNTIL ALL INTERESTS HAVE BEEN CONSOLIDATED
OR A NON-STANDARD UNIT HAS BEEN APPROVED BY THE DIVISION



Note: All bearings recited herein are based on the New Mexico State Plane Coordinate System, NAD 83, New Mexico East Zone 3001, US Survey Feet, all distances are grid.

STRANGER 33 FED 14H
ELEV: 3332.2'
LAT: 32.0803037
LONG: -103.4680003

FIRST TAKE POINT
LAT: 32.0800136
LONG: -103.4695305

BOTTOM OF HOLE
LAT: 32.0941862
LONG: -103.4695455

LAST TAKE POINT
LAT: 32.0939663
LONG: -103.4695451

OPERATOR CERTIFICATION

I hereby certify that the information herein is true and complete to the best of my knowledge and belief, and that this organization either owns a working interest or unleased mineral interest in the land including the proposed bottom hole location or has a right to drill this well at this location pursuant to a contract with an owner of such mineral or working interest, or to a voluntary pooling agreement or a compulsory pooling order heretofore entered by the division.

Rebecca Deal 10/25/2018
Signature Date

Rebecca Deal, Regulatory Analyst
Printed Name

rebecca.deal@dmv.com

E-mail Address

SURVEYOR CERTIFICATION

I hereby certify that the well location shown on this plat was plotted from field notes of actual surveys made by me or under my supervision, and that the same is true and correct to the best of my belief.

07/2018

Date of Survey

Signature & Seal of Professional Surveyor



08/16/18

Certificate No. 22404 B.L. LAMAN
Date of Survey: 7/25/18 DRAWN BY: CM