

District I  
1625 N. French Dr., Hobbs, NM 88240  
Phone: (575) 393-6161 Fax: (575) 393-0720  
District II  
811 S. First St., Artesia, NM 88210  
Phone: (575) 748-1283 Fax: (575) 748-9720  
District III  
1000 Rio Brazos Road, Aztec, NM 87410  
Phone: (505) 334-6178 Fax: (505) 334-6170  
District IV  
1220 S. St. Francis Dr., Santa Fe, NM 87505  
Phone: (505) 476-3460 Fax: (505) 476-3462

State of New Mexico  
Energy, Minerals & Natural Resources Department  
OIL CONSERVATION DIVISION  
1220 South St. Francis Dr.  
Santa Fe, NM 87505

Form C-102  
Revised August 1, 2011  
Submit one copy to appropriate  
District Office

MAY 24 2019

☐ AMENDED REPORT

RECEIVED

WELL LOCATION AND ACREAGE DEDICATION PLAT

<sup>1</sup> API Number 30-025-45778	<sup>2</sup> Pool Code 96434	<sup>3</sup> Pool Name Red Hills; Bone Spring, North
<sup>4</sup> Property Code 318022	<sup>5</sup> Property Name PIRATE STATE	<sup>6</sup> Well Number 401H
<sup>7</sup> OGRID No. 372165	<sup>8</sup> Operator Name CENTENNIAL RESOURCE PRODUCTION, LLC	<sup>9</sup> Elevation 3527.6'

<sup>10</sup> Surface Location

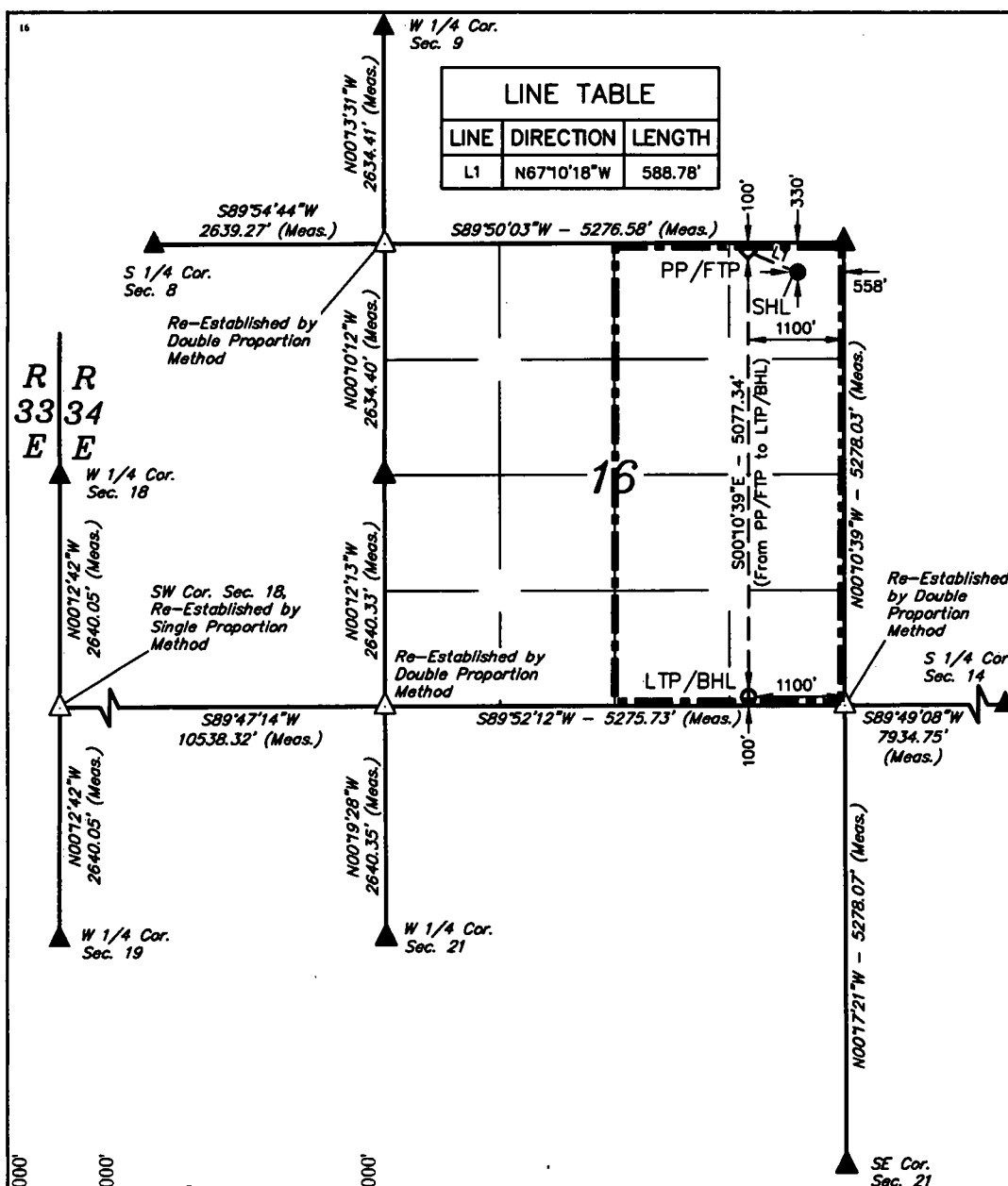
UL or lot no. A	Section 16	Township 24S	Range 34E	Lot Idn	Feet from the 330	North/South line NORTH	Feet from the 558	East/West line EAST	County LEA
--------------------	---------------	-----------------	--------------	---------	----------------------	---------------------------	----------------------	------------------------	---------------

<sup>11</sup> Bottom Hole Location If Different From Surface

UL or lot no. P	Section 16	Township 24S	Range 34E	Lot Idn	Feet from the 100	North/South line SOUTH	Feet from the 1100	East/West line EAST	County LEA
--------------------	---------------	-----------------	--------------	---------	----------------------	---------------------------	-----------------------	------------------------	---------------

<sup>12</sup> Dedicated Acres 320	<sup>13</sup> Joint or Infill	<sup>14</sup> Consolidation Code	<sup>15</sup> Order No.
--------------------------------------	-------------------------------	----------------------------------	-------------------------

No allowable will be assigned to this completion until all interests have been consolidated or a non-standard unit has been approved by the division.



**"OPERATOR  
CERTIFICATION**

I hereby certify that the information contained herein is true and complete to the best of my knowledge and belief, and that this organization either owns a working interest or unleased mineral interest in the land including the proposed bottom hole location or has a right to drill this well at this location pursuant to a contract with an owner of such a mineral or working interest, or to a voluntary pooling agreement or a compulsory pooling order heretofore entered by the division.

K.C. 5/23/19

Signature Date

Kanicia Castillo

Printed Name

Kanicia.castillo@cdevinc.com

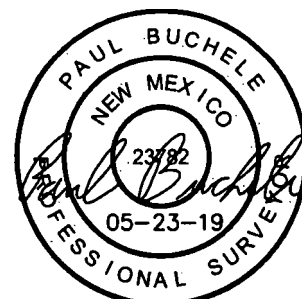
E-mail Address

**"SURVEYOR  
CERTIFICATION**

I hereby certify that the well location shown on this plat was plotted from field notes of actual surveys made by me or under my supervision, and that the same is true and correct to the best of my belief.

December 01, 2018

Date of Survey  
Signature and Seal of Professional Surveyor:



Certificate Number:

SCALE

DRAWN BY: C.D. 12-10-18

REV.: 1 J.N. 05-23-19

(UPDATE DEDICATED ACREAGE)

- = SURFACE HOLE LOCATION
- ◆ = PP/FTP
- = LTP/BHL
- ▲ = SECTION CORNER LOCATED
- △ = SECTION CORNER RE-ESTABLISHED (Not Set on Ground.)

NAD 83 (SURFACE HOLE LOCATION)	
LATITUDE = 32°13'26.02" (32.223894°)	
LONGITUDE = 103°28'05.46" (103.468183°)	
STATE PLANE NAD 83 (N.M. EAST)	
Y: 446263.38' X: 808874.54'	
UTM, NAD 83 (ZONE 13)	
Y: 11700377.08' X: 2113982.34'	

NOTE:

- Distances referenced on plat to section lines are perpendicular.
- Basis of Bearing is a Transverse Mercator Projection with a Central Meridian of W103°53'00"

NAD 83 (PP/FTP)	
LATITUDE = 32°13'28.30" (32.224527°)	
LONGITUDE = 103°28'11.76" (103.469934°)	
STATE PLANE NAD 83 (N.M. EAST)	
Y: 446489.50' X: 808331.02'	
UTM, NAD 83 (ZONE 13)	
Y: 11700599.79' X: 2113437.49'	

NAD 83 (LTP/BHL)	
LATITUDE = 32°12'38.06" (32.210573°)	
LONGITUDE = 103°28'11.81" (103.469947°)	
STATE PLANE NAD 83 (N.M. EAST)	
Y: 441413.11' X: 808368.01'	
UTM, NAD 83 (ZONE 13)	
Y: 11695524.41' X: 2113505.98'	