

District I
1625 N. French Dr., Hobbs, NM 88240
Phone: (575) 393-6161 Fax: (575) 393-0720
District II
811 S. First St., Artesia, NM 88210
Phone: (575) 748-1283 Fax: (575) 748-9720
District III
1000 Rio Brazos Road, Aztec, NM 87410
Phone: (505) 334-6178 Fax: (505) 334-6170
District IV
1220 S. St. Francis Dr., Santa Fe, NM 87505
Phone: (505) 476-3460 Fax: (505) 476-3462

State of New Mexico
Energy, Minerals & Natural Resources Department
OIL CONSERVATION DIVISION
1220 South St. Francis Dr.
Santa Fe, NM 87505

Form C-102
Revised August 1, 2011
Submit one copy to appropriate
District Office
☒ AMERICAN OILPORT
As Drilled

HOBBS OCD
JUN 03 2019
RECEIVED

WELL LOCATION AND ACREAGE DEDICATION PLAT

1 API Number 30-025-44528		2 Pool Code 44500		3 Pool Name Maljamar, Yeso West	
4 Property Code 32080		5 Property Name PERIDOT 8 FEDERAL		6 Well Number 1H	
7 OGRID No. 217817		8 Operator Name ConocoPhillips Company		9 Elevation 4046.2'	

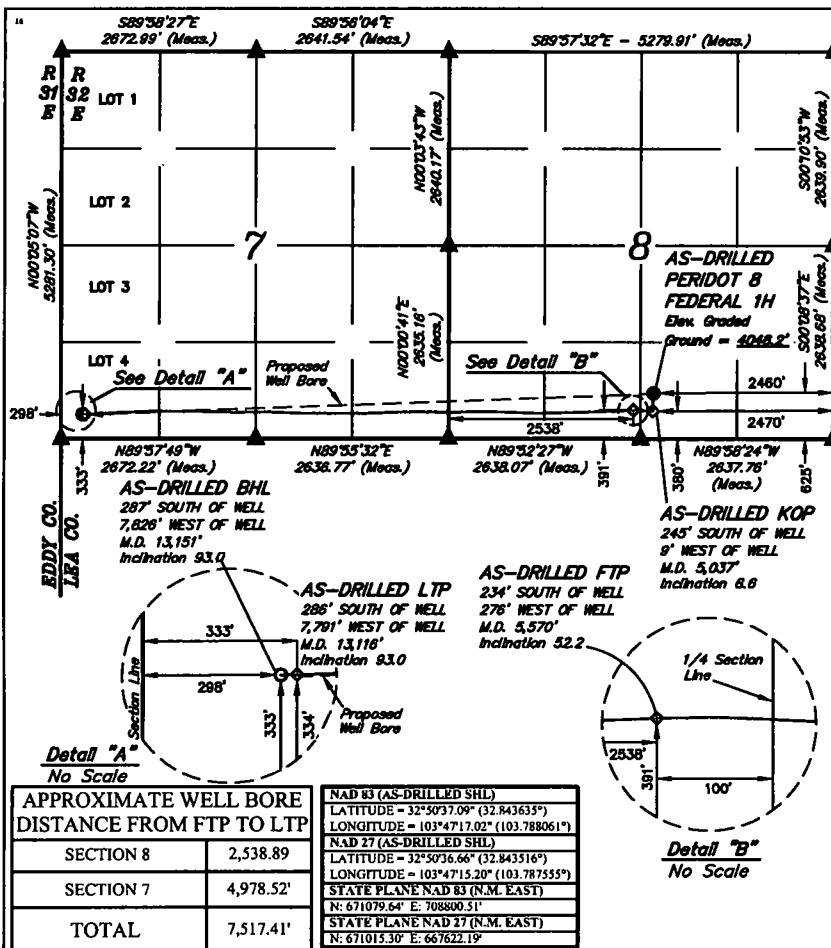
10 Surface Location

UL or lot no.	Section	Township	Range	Lot Idn	Feet from the	North/South line	Feet from the	East/West line	County
O	8	17S	32E		625	SOUTH	2460	EAST	LEA

11 Bottom Hole Location If Different From Surface

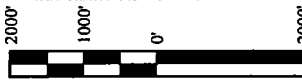
UL or lot no.	Section	Township	Range	Lot Idn	Feet from the	North/South line	Feet from the	East/West line	County
4	7	17S	32E		333	SOUTH	298	WEST	LEA
12 Dedicated Acres 240.91		13 Joint or Infill		14 Consolidation Code		15 Order No.			

No allowable will be assigned to this completion until all interests have been consolidated or a non-standard unit has been approved by the division.



APPROXIMATE WELL BORE DISTANCE FROM FTP TO LTP	
SECTION 8	2,538.89
SECTION 7	4,978.52'
TOTAL	7,517.41'

NOTE:
• Distances referenced on plat to section lines are perpendicular.
• Basis of Bearing is a Transverse Mercator Projection with a Central Meridian of W103°53'00"



DRAWN BY: C.D. 08-23-18
REV. 1 03-28-19 C.M.T. (UPDATE FTP)

- = AS-DRILLED SHL
- ◆ = AS-DRILLED PP/FTP/LTP
- = AS-DRILLED BHL
- ▲ = SECTION CORNER LOCATED

NAD 83 (AS-DRILLED SHL) LATITUDE = 32°50'37.09" (32.843635°) LONGITUDE = 103°47'17.02" (103.788061°)	NAD 83 (AS-DRILLED KOP) LATITUDE = 32°50'34.66" (32.842962°) LONGITUDE = 103°47'17.12" (103.788090°)
NAD 27 (AS-DRILLED SHL) LATITUDE = 32°50'36.66" (32.843516°) LONGITUDE = 103°47'15.20" (103.787555°)	NAD 27 (AS-DRILLED KOP) LATITUDE = 32°50'34.24" (32.842844°) LONGITUDE = 103°47'15.30" (103.787584°)
STATE PLANE NAD 83 (N.M. EAST) N: 671079.64' E: 708800.51'	STATE PLANE NAD 83 (N.M. EAST) N: 670834.98' E: 708792.90'
STATE PLANE NAD 27 (N.M. EAST) N: 671013.30' E: 667622.19'	STATE PLANE NAD 27 (N.M. EAST) N: 670770.63' E: 667614.38'
NAD 83 (AS-DRILLED LTP) LATITUDE = 32°50'34.31" (32.842865°) LONGITUDE = 103°48'48.32" (103.813423°)	NAD 83 (AS-DRILLED LTP) LATITUDE = 32°50'33.89" (32.842746°) LONGITUDE = 103°48'46.50" (103.812917°)
STATE PLANE NAD 83 (N.M. EAST) N: 670760.13' E: 701012.74'	STATE PLANE NAD 83 (N.M. EAST) N: 670695.89' E: 659834.34'
STATE PLANE NAD 27 (N.M. EAST) N: 670695.89' E: 659834.34'	

NAD 83 (AS-DRILLED PP/FTP) LATITUDE = 32°50'34.78" (32.842993°) LONGITUDE = 103°47'20.25" (103.788960°)	NAD 83 (AS-DRILLED BHL) LATITUDE = 32°50'34.30" (32.842862°) LONGITUDE = 103°48'48.73" (103.813537°)
NAD 27 (AS-DRILLED PP/FTP) LATITUDE = 32°50'34.35" (32.842875°) LONGITUDE = 103°47'18.43" (103.788454°)	NAD 27 (AS-DRILLED BHL) LATITUDE = 32°50'33.88" (32.842744°) LONGITUDE = 103°48'46.91" (103.813031°)
STATE PLANE NAD 83 (N.M. EAST) N: 670844.89' E: 708523.73'	STATE PLANE NAD 83 (N.M. EAST) N: 670759.10' E: 700977.81'
STATE PLANE NAD 27 (N.M. EAST) N: 670780.56' E: 667347.40'	STATE PLANE NAD 27 (N.M. EAST) N: 670694.85' E: 659799.40'

12 OPERATOR CERTIFICATION

I hereby certify that the information contained herein is true and complete to the best of my knowledge and belief, and that this organization either owns a working interest or unleased mineral interest in the land including the proposed bottom hole location or has a right to drill this well at this location pursuant to a contract with an owner of such a mineral or working interest, or to a voluntary pooling agreement or a compulsory pooling order heretofore entered by the division.

Susan B. Maunder 3/31/19
Signature Date

Susan B. Maunder
Printed Name

Susan.B.Maunder@conocophillips.com

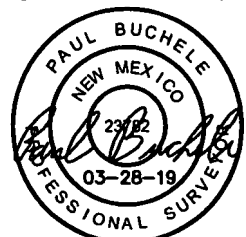
E-mail Address

13 SURVEYOR CERTIFICATION

I hereby certify that the well location shown on this plat was plotted from field notes of actual surveys made by me or under my supervision, and that the same is true and correct to the best of my belief.

August 22, 2018

Date of Survey
Signature and Seal of Professional Surveyor:



Certificate Number: