

District I
1625 N. French Dr., Hobbs, NM 88240
Phone: (575) 393-6161 Fax: (575) 393-0720
District II
811 S. First St., Artesia, NM 88210
Phone: (575) 748-1283 Fax: (575) 748-9720
District III
1000 Rio Brazos Road, Aztec, NM 87410
Phone: (505) 334-6178 Fax: (505) 334-6170
District IV
1220 S. St. Francis Dr., Santa Fe, NM 87505
Phone: (505) 476-3460 Fax: (505) 476-3462

State of New Mexico **HOBBS OCD**
Energy, Minerals & Natural Resources
Department **MAY 31 2019**
OIL CONSERVATION DIVISION
1220 South St. Francis Dr. **RECEIVED**
Santa Fe, NM 87505

FORM C-102
Revised August 1, 2011
Submit one copy to appropriate
District Office
☐ AMENDED REPORT

WELL LOCATION AND ACREAGE DEDICATION PLAT

¹ API Number 30-025- 42749	² Pool Code 97663	³ Pool Name ROCK LAKE; DELAWARE
⁴ Property Code 315703	⁵ Property Name TRIGG 5 FED	
⁷ OGRID No. 7377	⁶ Well Number #1	
⁸ Operator Name EOG RESOURCES, INC.		⁹ Elevation 3466'

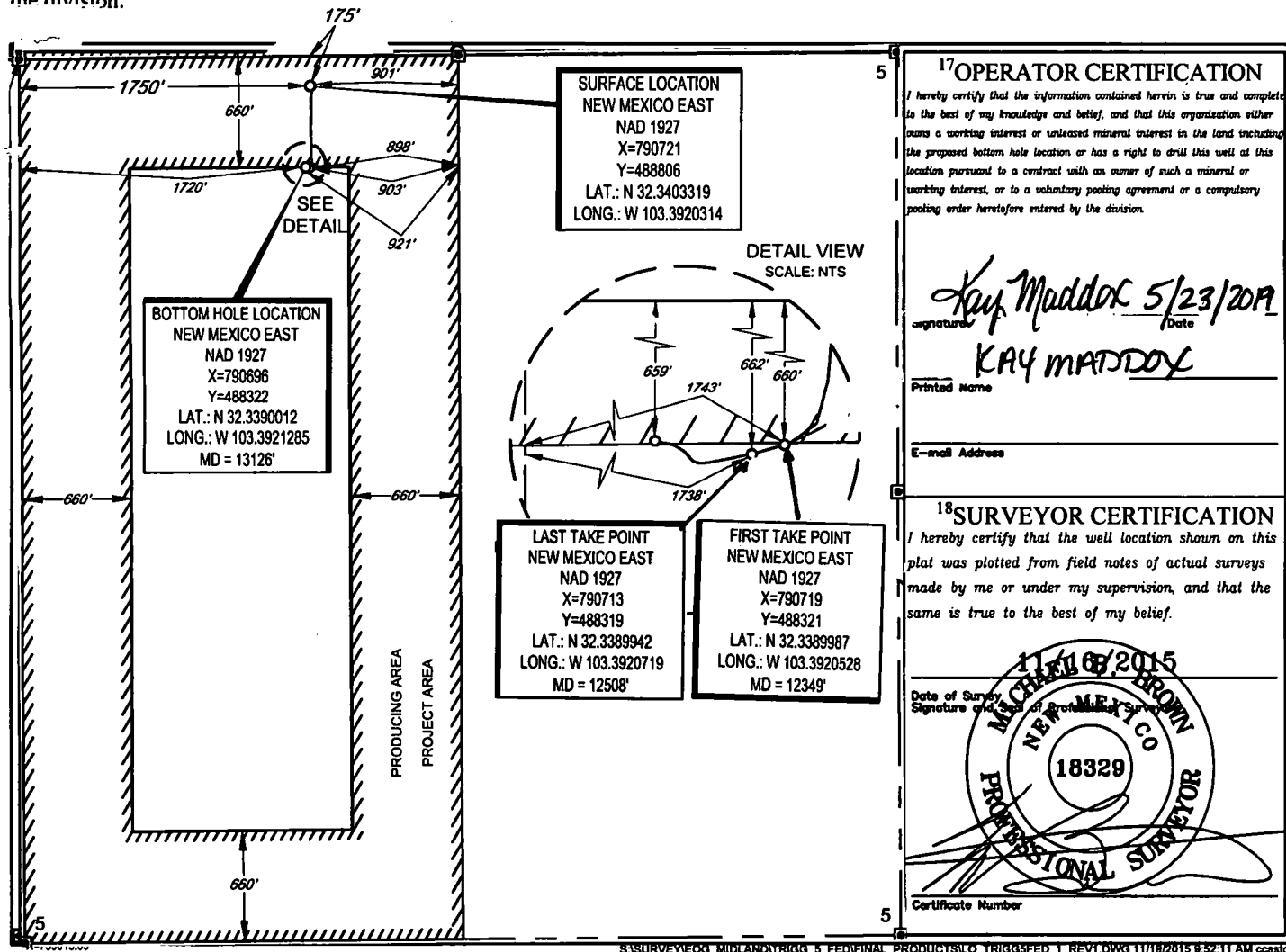
¹⁰Surface Location

UL or lot no.	Section	Township	Range	Lot Idn	Feet from the	North/South line	Feet from the	East/West line	County
C	5	23-S	35-E	-	175'	NORTH	1750'	WEST	LEA

UL or lot no.	Section	Township	Range	Lot Idn	Feet from the	North/South line	Feet from the	East/West line	County
C	5	23-S	35-E	-	659'	NORTH	1720'	WEST	LEA

¹¹ Dedicated Acres 320.52	¹² Joint or Infill	¹³ Consolidation Code	¹⁴ Order No.
--	-------------------------------	----------------------------------	-------------------------

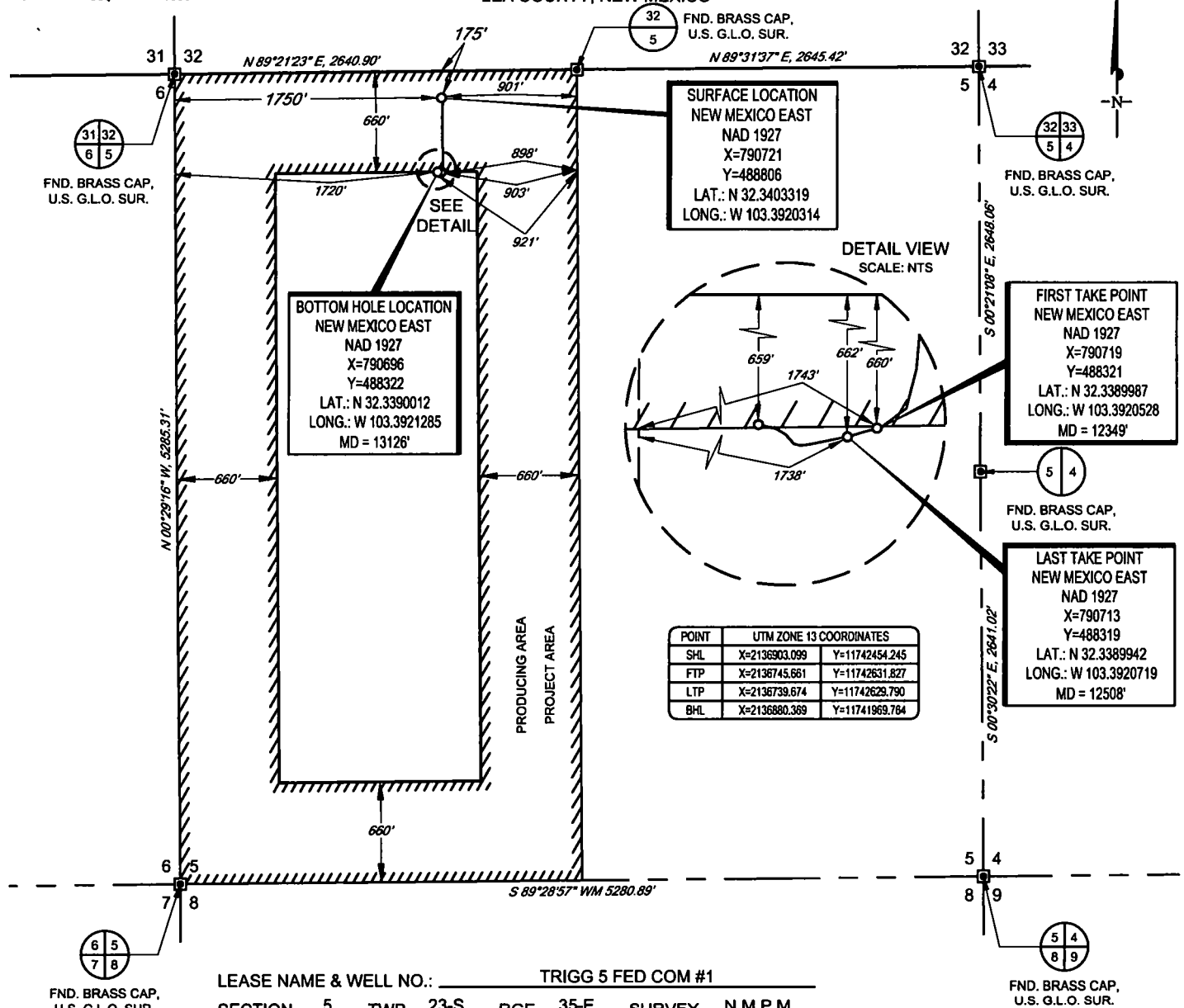
No allowable will be assigned to this completion until all interests have been consolidated or a non-standard unit has been approved by the division.



SCALE: 1" = 1000'

0' 500' 1000'

SECTION 5, TOWNSHIP 23-S, RANGE 35-E, N.M.P.M.
LEA COUNTY, NEW MEXICO



TOPOGRAPHIC
LOYALTY INNOVATION LEGACY

1400 EVERMAN
PARKWAY, Ste. 197 • FT. WORTH, TEXAS 76140 TELEPHONE:
(817) 744-7512 • FAX (817) 744-7548
2903 NORTH BIG SPRING • MIDLAND, TEXAS 79705
TELEPHONE: (432) 682-1853 OR (800) 767-1853 • FAX (432) 682-1743
WWW.TOPOGRAPHIC.COM



Michael Blake Brown, P.S. No. 18329
MAY 18, 2017

Geog resources, Inc.

TRIGG 5 FED COM #1 AS-COMPLETED	REVISION:
DATE: 05/29/97	
FILE:AD_TRIGG_5_FED_COM_1H	
DRAWN BY: A.C.C.	
SHEET: 1 OF 1	

NOTES:

1. ORIGINAL DOCUMENT SIZE: 8.5" X 11"
2. ALL BEARINGS, DISTANCES, AND COORDINATE VALUES CONTAINED HEREIN ARE GRID BASED UPON THE NEW MEXICO STATE PLANE COORDINATE SYSTEM, EAST ZONE, U.S. SURVEY FEET, NORTH AMERICAN DATUM 1927.
3. THIS WELL LOCATION SHOWN HEREON HAS BEEN SURVEYED ON THE GROUND UNDER MY SUPERVISION AND PREPARED ACCORDING TO THE EVIDENCE FOUND AT THE TIME OF SURVEY, AND DATA PROVIDED BY EOG RESOURCES, INC. THIS CERTIFICATION IS MADE AND LIMITED TO THOSE PERSONS OR ENTITIES SHOWN ON THE FACE OF THIS PLAT AND IS NON-TRANSFERABLE. THIS SURVEY IS CERTIFIED FOR THIS TRANSACTION ONLY.