

District I
1625 N. French Dr., Hobbs, NM 88240
Phone: (575) 393-6161 Fax: (575) 393-0720
District II
811 S. First St., Artesia, NM 88210
Phone: (575) 748-1283 Fax: (575) 748-9720
District III
1000 Rio Brazos Road, Aztec, NM 87410
Phone: (505) 334-6178 Fax: (505) 334-6170
District IV
1220 S. St. Francis Dr., Santa Fe, NM 87505
Phone: (505) 476-3460 Fax: (505) 476-3462

State of New Mexico
Energy, Minerals & Natural Resources
Department
OIL CONSERVATION DIVISION
1220 South St. Francis Dr.
Santa Fe, NM 87505

FORM C-102

Revised August 1, 2011

Submit one copy to appropriate

District Office

☐ AMENDED REPORT

HOBBS OCD
JUN 13 2019
RECEIVED

WELL LOCATION AND ACREAGE DEDICATION PLAT

¹ API Number 30-025-46126	² Pool Code 96674	³ Pool Name TRIPLE X; DANE SPRING WEST
⁴ Property Code 325410	⁵ Property Name HYPERION STATE	⁶ Well Number 141H
⁷ OGRID No. 372043	⁸ Operator Name TAP ROCK OPERATING, LLC.	⁹ Elevation 3537'

¹⁰Surface Location

UL or lot no.	Section	Township	Range	Lot Idn	Feet from the	North/South line	Feet from the	East/West line	County
D	20	24-S	33-E	-	527'	NORTH	540'	WEST	LEA

¹¹Bottom Hole Location If Different From Surface

UL or lot no.	Section	Township	Range	Lot Idn	Feet from the	North/South line	Feet from the	East/West line	County
M	20	24-S	33-E	-	30'	SOUTH	331'	WEST	LEA

¹² Dedicated Acres	¹³ Joint or Infill	¹⁴ Consolidation Code	¹⁵ Order No.
-------------------------------	-------------------------------	----------------------------------	-------------------------

No allowable will be assigned to this completion until all interests have been consolidated or a non-standard unit has been approved by the division.

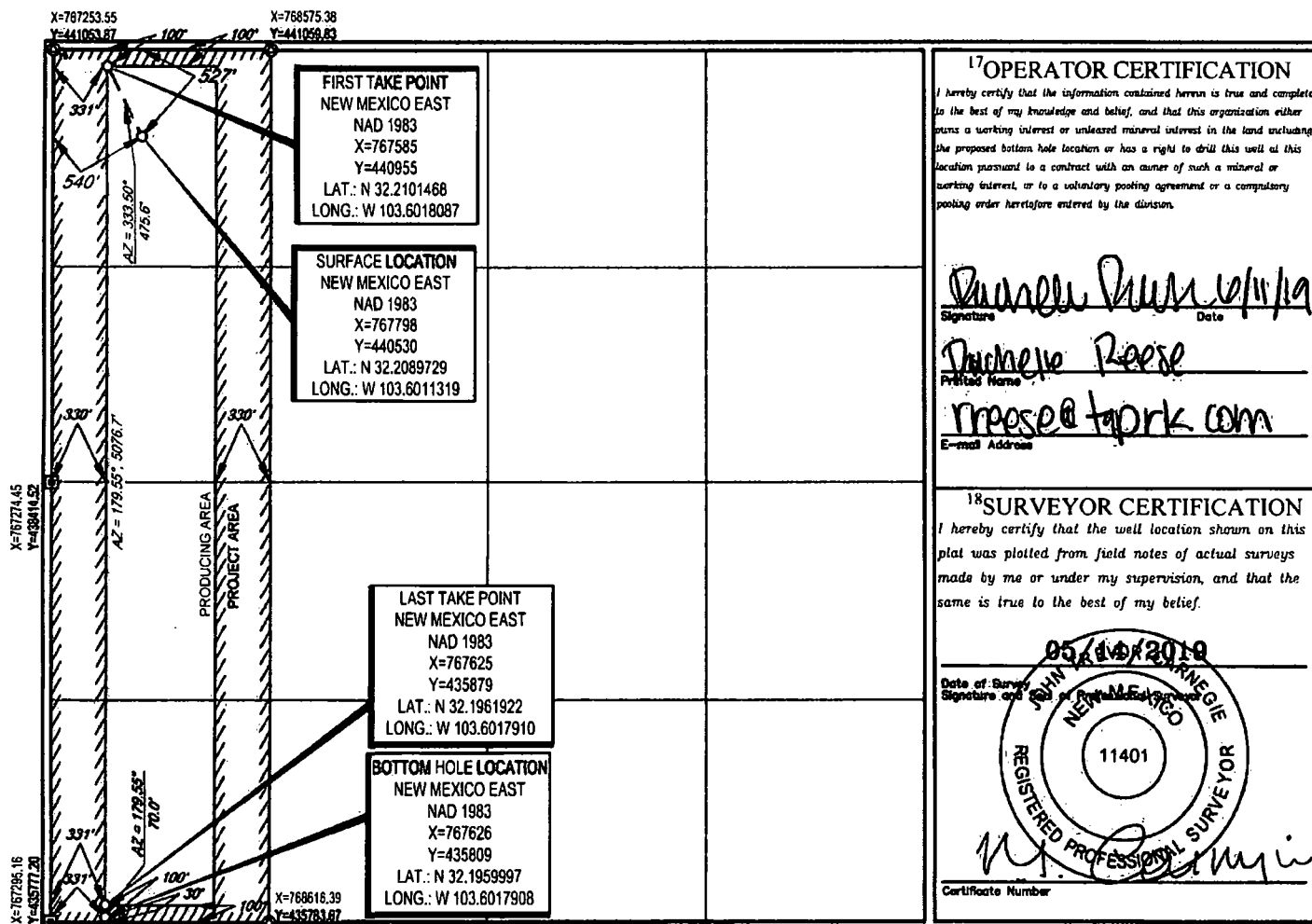
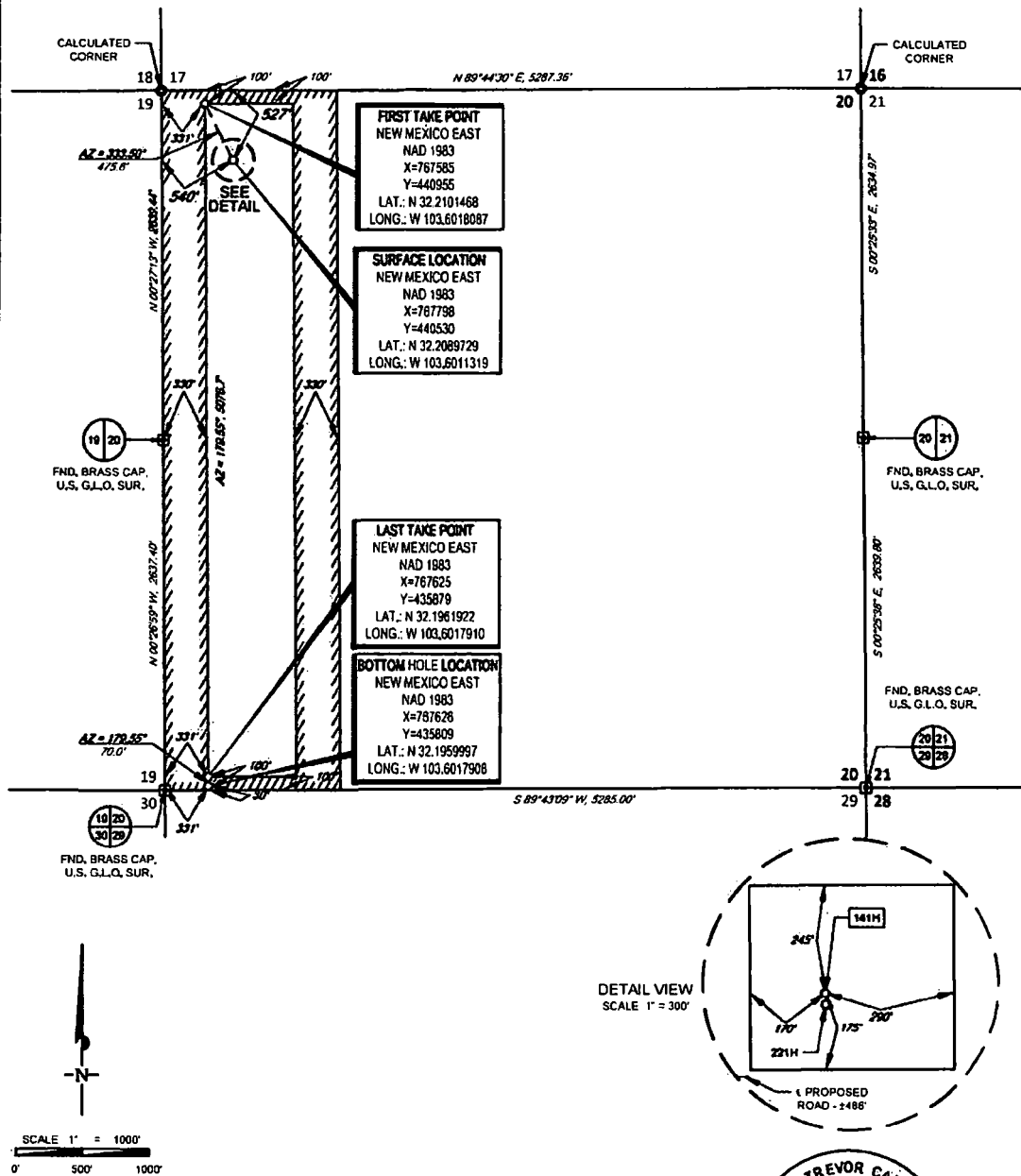


EXHIBIT 2A

SECTION 20, TOWNSHIP 24-S, RANGE 33-E, N.M.P.M.
LEA COUNTY, NEW MEXICO

LEASE NAME & WELL NO.: HYPERION STATE 141H

SECTION 20 TWP 24-S RGE 33-E SURVEY N.M.P.M.
COUNTY LEA STATE NM
DESCRIPTION 527' FNL & 540' FWL

DISTANCE & DIRECTION
FROM INT. OF NM-128 & DELAWARE BASIN RD., GO WEST ON NM-128
±5.4 MILES, THENCE SOUTH (LEFT) ON A LEASE RD. ±880 FEET,
THENCE NORTHEAST (LEFT) ON A PROPOSED RD. ±486 FEET TO A
POINT ±255 FEET SOUTHWEST OF THE LOCATION.

ALL BEARINGS, DISTANCES, AND COORDINATE VALUES CONTAINED HEREON ARE GRID
BASED UPON THE NEW MEXICO COORDINATE SYSTEM OF 1983, EAST ZONE, U S SURVEY
FEET

THIS EASEMENT/SERVITUDE LOCATION SHOWN HEREON HAS BEEN SURVEYED ON THE GROUND UNDER MY SUPERVISION AND PREPARED ACCORDING TO THE EVIDENCE FOUND AT THE TIME OF SURVEY, AND DATA PROVIDED BY TAP ROCK OPERATING, LLC THIS CERTIFICATION IS MADE AND LIMITED TO THOSE PERSONS OR ENTITIES SHOWN ON THE FACE OF THIS PLAT AND IS NON-TRANSFERABLE. THIS SURVEY IS CERTIFIED FOR THIS TRANSACTION ONLY.



John Trevor Carnegie, P.S. No. 11401
MAY 14, 2019



TOPOGRAPHIC
LOYALTY INNOVATION LEGACY

1400 EVERMAN PARKWAY, Ste. 148 • FT. WORTH, TEXAS 76140
TELEPHONE: (817) 744-7512 • FAX (817) 744-7594
 2503 NORTH BIRK SPRING • MIDLAND, TEXAS 79705
TELEPHONE (432) 682-1653 OR (800) 787-1853 • FAX (432) 682-1743
WWW.TOPOGRAPHIC.COM