

UNITED STATES
DEPARTMENT OF THE INTERIOR
BUREAU OF LAND MANAGEMENTRECEIVED
Operator CopyFORM APPROVED
OMB No. 1004-0137
Expires: July 31, 2010

WELL COMPLETION OR RECOMPLETION REPORT

5. Lease Serial No.
NMNM669251a. Type of Well ☒ Oil Well ☐ Gas Well ☐ Dry ☐ Other
b. Type of Completion ☒ New Well ☐ Work Over ☐ Deepen ☐ Plug Back ☐ Diff. Resvr.
Other

6. If Indian, Allottee or Tribe Name

7. Unit or CA Agreement Name and No.
NMNM137096X2. Name of Operator
OXY USA INCORPORATEDContact: SARAH CHAPMAN
E-Mail: SARAH_CHAPMAN@OXY.COM8. Lease Name and Well No.
MESA VERDE BS UNIT 11H3. Address P O BOX 4294
HOUSTON, TX 77210-42943a. Phone No. (include area code)
Ph: 713-350-49979. API Well No.
30-025-44187-00-S1

4. Location of Well (Report location clearly and in accordance with Federal requirements)*

At surface SESE 420FSL 1070FEL 32.211316 N Lat, 103.708749 W Lon

Sec 18 T24S R32E Mer NMP

At top prod interval reported below NENE 213FNL 1441FEL 32.231001 N Lat, 103.709784 W Lon

Sec 7 T24S R32E Mer NMP

At total depth NENE 23FNL 1443FEL 32.231431 N Lat, 103.709784 W Lon

10. Field and Pool, or Exploratory
MESA VERDE; 3311. Sec., T., R., M., or Block and Survey
or Area Sec 18 T24S R32E Mer NMP12. County or Parish
LEA13. State
NM14. Date Spudded
03/01/201815. Date T.D. Reached
06/24/201816. Date Completed
☐ D & A ☒ Ready to Prod.
07/12/201817. Elevations (DF, KB, RT, GL)*
3569 GL18. Total Depth: MD 18175
TVD 1044319. Plug Back T.D.: MD 18121
TVD 1044320. Depth Bridge Plug Set: MD
TVD21. Type Electric & Other Mechanical Logs Run (Submit copy of each)
GAMMARAYANDMUCL22. Was well cored? ☒ No ☐ Yes (Submit analysis)
Was DST run? ☒ No ☐ Yes (Submit analysis)
Directional Survey? ☒ No ☐ Yes (Submit analysis)

23. Casing and Liner Record (Report all strings set in well)

Hole Size	Size/Grade	Wt. (#/ft.)	Top (MD)	Bottom (MD)	Stage Cementer Depth	No. of Sk. & Type of Cement	Slurry Vol. (BBL)	Cement Top*	Amount Pulled
17.500	13.375 J55	54.5	0	948		4558	294	0	
12.250	9.625 L80	43.5	0	4702		1379	420	0	
8.500	5.500 P110	20.0	0	18175		2729	734	509	

24. Tubing Record

Size	Depth Set (MD)	Packer Depth (MD)	Size	Depth Set (MD)	Packer Depth (MD)	Size	Depth Set (MD)	Packer Depth (MD)

25. Producing Intervals

Formation	Top	Bottom	Perforated Interval	Size	No. Holes	Perf. Status
A) BONE SPRING 2ND	8574	17985	10292 TO 17985	0.000	1025	ACTIVE
B)						
C)						
D)						

26. Perforation Record

27. Acid, Fracture, Treatment, Cement Squeeze, Etc.

Depth Interval	Amount and Type of Material
10292 TO 17985	12705840G SLICK WATER & 195000G OF 7.5% HCL W/ 7817640# SAND

28. Production - Interval A

Date First Produced	Test Date	Hours Tested	Test Production	Oil BBL	Gas MCF	Water BBL	Oil Gravity Corr. API	Gas Gravity	Production Method
08/11/2018	10/15/2018	24	→	5686.0	3710.0	4508.0			FLows FROM WELL
Choke Size	Tbg. Press. Flwg. SI	Csg. Press. 743.0	24 Hr. Rate →	Oil BBL 5686	Gas MCF 3710	Water BBL 4508	Gas:Oil Ratio 652	Well Status	

28a. Production - Interval B

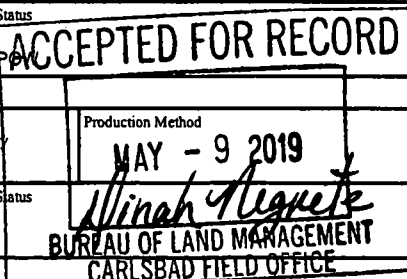
Date First Produced	Test Date	Hours Tested	Test Production	Oil BBL	Gas MCF	Water BBL	Oil Gravity Corr. API	Gas Gravity	Production Method
			→						
Choke Size	Tbg. Press. Flwg. SI	Csg. Press.	24 Hr. Rate →	Oil BBL	Gas MCF	Water BBL	Gas:Oil Ratio	Well Status	

(See Instructions and spaces for additional data on reverse side)

ELECTRONIC SUBMISSION #442168 VERIFIED BY THE BLM WELL INFORMATION SYSTEM

** BLM REVISED ** BLM REVISED ** BLM REVISED ** BLM REVISED ** BLM REVISED **

Reclamation Due: 1/12/2019



28b. Production - Interval C

Date First Produced	Test Date	Hours Tested	Test Production →	Oil BBL	Gas MCF	Water BBL	Oil Gravity Corr. API	Gas Gravity	Production Method
Choke Size	Tbg. Press. Flwg. SI	Csg. Press.	24 Hr. Rate →	Oil BBL	Gas MCF	Water BBL	Gas:Oil Ratio	Well Status	

28c. Production - Interval D

Date First Produced	Test Date	Hours Tested	Test Production →	Oil BBL	Gas MCF	Water BBL	Oil Gravity Corr. API	Gas Gravity	Production Method
Choke Size	Tbg. Press. Flwg. SI	Csg. Press.	24 Hr. Rate →	Oil BBL	Gas MCF	Water BBL	Gas:Oil Ratio	Well Status	

29. Disposition of Gas(Sold, used for fuel, vented, etc.)
SOLD

30. Summary of Porous Zones (Include Aquifers):

Show all important zones of porosity and contents thereof: Cored intervals and all drill-stem tests, including depth interval tested, cushion used, time tool open, flowing and shut-in pressures and recoveries.

31. Formation (Log) Markers

Formation	Top	Bottom	Descriptions, Contents, etc.	Name	Top Meas. Depth
BELL CANYON	4662	5556	OIL, GAS, WATER	RUSTLER	830
CHERRY CANYON	5557	6887	OIL, GAS, WATER	SALADO	1149
BRUSHY CANYON	6888	8573	OIL, GAS, WATER	CASTILE	3335
BONE SPRING	8574	9536	OIL, GAS, WATER	DELAWARE	4641
BONE SPRING 1ST	9537	9934	OIL, GAS, WATER	BELL CANYON	4662
BONE SPRING 2ND	9935	10125	OIL, GAS, WATER	CHERRY CANYON	5557
				BRUSHY CANYON	6888
				BONE SPRING	8574

32. Additional remarks (include plugging procedure):

LOG HEADER, DIRECTIONAL SURVEY, AS-DRILLED C-102 PLAT AND WBD ARE ATTACHED.

33. Circle enclosed attachments:

- | | | | |
|---|--------------------|---------------|-----------------------|
| 1. Electrical/Mechanical Logs (1 full set req'd.) | 2. Geologic Report | 3. DST Report | 4. Directional Survey |
| 5. Sundry Notice for plugging and cement verification | 6. Core Analysis | 7. Other: | |

34. I hereby certify that the foregoing and attached information is complete and correct as determined from all available records (see attached instructions):

Electronic Submission #442168 Verified by the BLM Well Information System.

For OXY USA INCORPORATED, sent to the Hobbs

Committed to AFMSS for processing by DINAH NEGRETE on 04/06/2019 (19DCN0065SE)

Name (please print) SARAH CHAPMAN

Title REGULATORY SPECIALIST

Signature (Electronic Submission)

Date 11/01/2018

Title 18 U.S.C. Section 1001 and Title 43 U.S.C. Section 1212, make it a crime for any person knowingly and willfully to make to any department or agency of the United States any false, fictitious or fraudulent statements or representations as to any matter within its jurisdiction.

**** REVISED ** REVISED ** REVISED ** REVISED ** REVISED ** REVISED ** REVISED ** REVISED ****

JUN 03 2019

Revised August 1, 2011

District Office

☒ AMENDED REPORT
AS. Drilled

District I
1625 N. French Dr., Hobbs, NM 88240
Phone: (575) 393-6161 Fax: (575) 393-0720

District II
811 S. First St., Artesia, NM 88210
Phone: (505) 748 1281 Fax: (775) 746 9721

District III
1000 Rio Brazos Road, Artesia, NM 87410
Phone: (505) 334-6178 Fax: (505) 334-6170

District IV
1220 S. St. Francis Dr., Santa Fe, NM 87505
Phone: (505) 476-3460 Fax: (505) 476-3462

State of New Mexico
Energy, Minerals & Natural Resources Department
OIL CONSERVATION DIVISION
1220 South St. Francis Dr.
Santa Fe, NM 87505

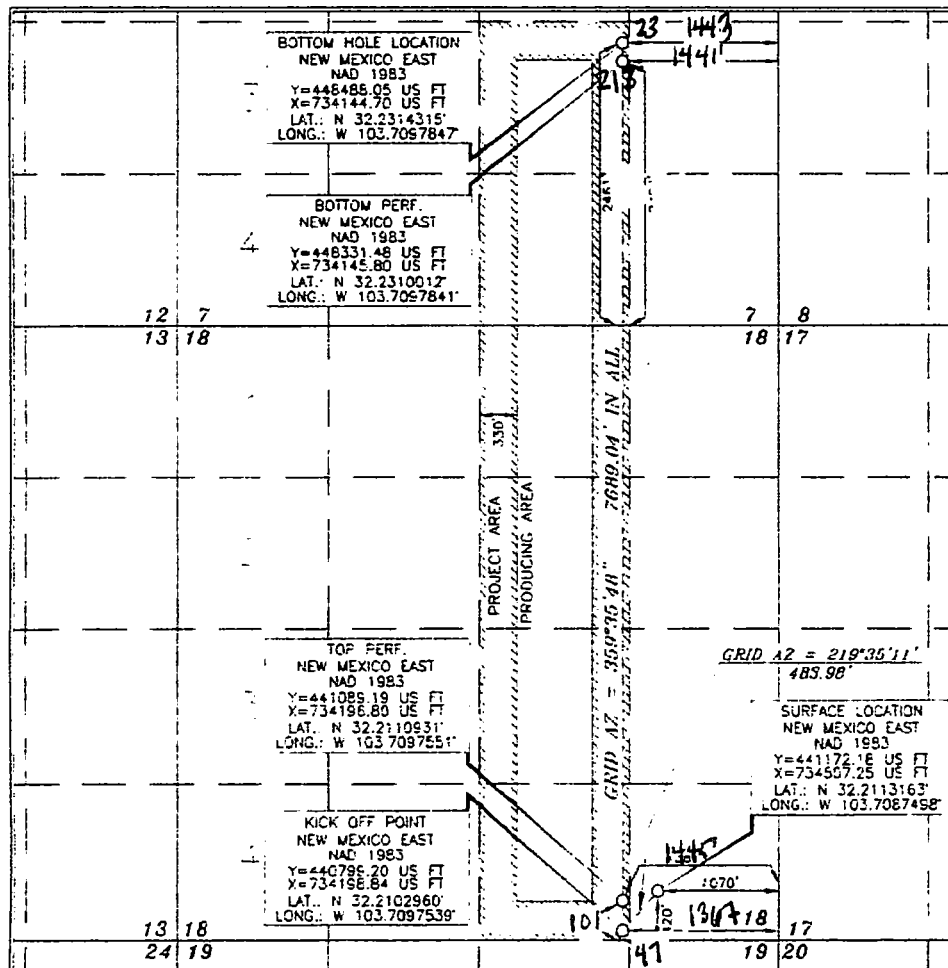
API Number 30-025-44187	Pool Code 96229	Pool Name Mesa Verde; Bone Spring
Property Code 320828	Property Name MESA VERDE DS Unit	Well Number 11H
OGRID No. 146916	Operator Name OXY USA INC.	Elevation 3569.8'

LT. or lot no.	Section	Township	Range	Lot lds.	Feet from the	North South line	Feet from the	East West line	County
P	18	24 SOUTH	32 EAST, N.M.P.M.		420'	SOUTH	1070'	EAST	LEA

UL or lo: no.	Section	Township	Range	Lot Idn	Feet from the	North South line	Feet from the	East/West: line	County
8	7	24 SOUTH	32 EAST, N.M.P.M.		23'	NORTH	1443'	EAST	LEA

Dedicated Acres	Joint or Infill	Consolidation Code	Order No.
			FTD - 101' FSL 1445' FEL
			LTP - 213' FNL 1441' FEL

No allowable will be assigned to this completion until all interests have been consolidated or a non-standard unit has been approved by the division.



I already accept that the information contained herein is true and complete to the best of my knowledge and belief, and that this organizational order meets a working interest or voluntary financial interest in the land including the proposed lease, less payment of less a right to drill. This well on this location pertains to a contract with an owner of such a mineral or working interest or to a voluntary pooling agreement or a compulsory pooling order.

literary matter by the division.

Jc A Mc 8/2/18

Signature

Sarah Chapman

Personal Name

Sarah - Chapman@oxy.com

I hereby certify that the well location shown on this plat was plotted from the notes of actual surveys made by me, and under my supervision, and that the same is true and correct to the best of my belief.

15079
OCTOBER 1, 2015

Date of Subj. _____

Signature and Seal of Professional Supervisor

Terry Paul 9/26/2016
Certificate Number 15079

WD 151001WL-c (Rev. A) (KA)

RECEIVED

Intent ☐ As Drilled ☒

JUN 03 2019

API #
30-025-44187

DISTRICT II-ARTESIA O.C.D.

Operator Name:

OXY USA Inc.

Property Name:

MEJA VERDE BS UNIT

Well Number

114

Kick Off Point (KOP)

UL	Section	Township	Range	Lot	Feet	From N/S	Feet	From E/W	County
P	18	24S	32E		47	S	1367	E	LEA
Latitude					Longitude				NAD
32.21030					-103.70981				NAD 83

First Take Point (FTP)

UL	Section	Township	Range	Lot	Feet	From N/S	Feet	From E/W	County
P	18	24S	32E		101	S	1445	E	LEA
Latitude					Longitude				NAD
32.21045					-103.70997				NAD 83

Last Take Point (LTP)

UL	Section	Township	Range	Lot	Feet	From N/S	Feet	From E/W	County
J	7	24S	32E		213	N	1441	E	LEA
Latitude					Longitude				NAD
32.23136					-103.70981				NAD 83

Is this well the defining well for the Horizontal Spacing Unit? ☐Is this well an infill well? ☐

If infill is yes please provide API if available, Operator Name and well number for Defining well for Horizontal Spacing Unit.

API #

Operator Name:

Property Name:

Well Number

KZ 06/29/2018