

District I
1623 N. French Dr., Hobbs, NM 88240
Phone: (575) 393-6161 Fax: (575) 393-0720
District II
811 S. First St., Artesia, NM 88210
Phone: (575) 748-1283 Fax: (575) 748-9720
District III
1000 Rio Brazos Road, Aztec, NM 87410
Phone: (505) 334-6178 Fax: (505) 334-6170
District IV
1220 S. St. Francis Dr., Santa Fe, NM 87505
Phone: (505) 476-3460 Fax: (505) 476-3462

State of New Mexico **HOBBS OCD**
Energy, Minerals & Natural Resources
Department JUN 20 2019
OIL CONSERVATION DIVISION
1220 South St. Francis **RECEIVED**
Santa Fe, NM 87505

FORM C-102
Revised August 1, 2011
Submit one copy to appropriate
District Office
☐ AMENDED REPORT

WELL LOCATION AND ACREAGE DEDICATION PLAT

API Number 30-025- 6144	Pool Code 33813 98294	Pool Name WC-025 G-09 9263619C WC
Property Code 722777	Property Name GOLDEN BELL FED COM 26 36 06	Well Number 121H
OGRID No. 372224	Operator Name AMEREDEV OPERATING, LLC.	Elevation 3025'

10 Surface Location

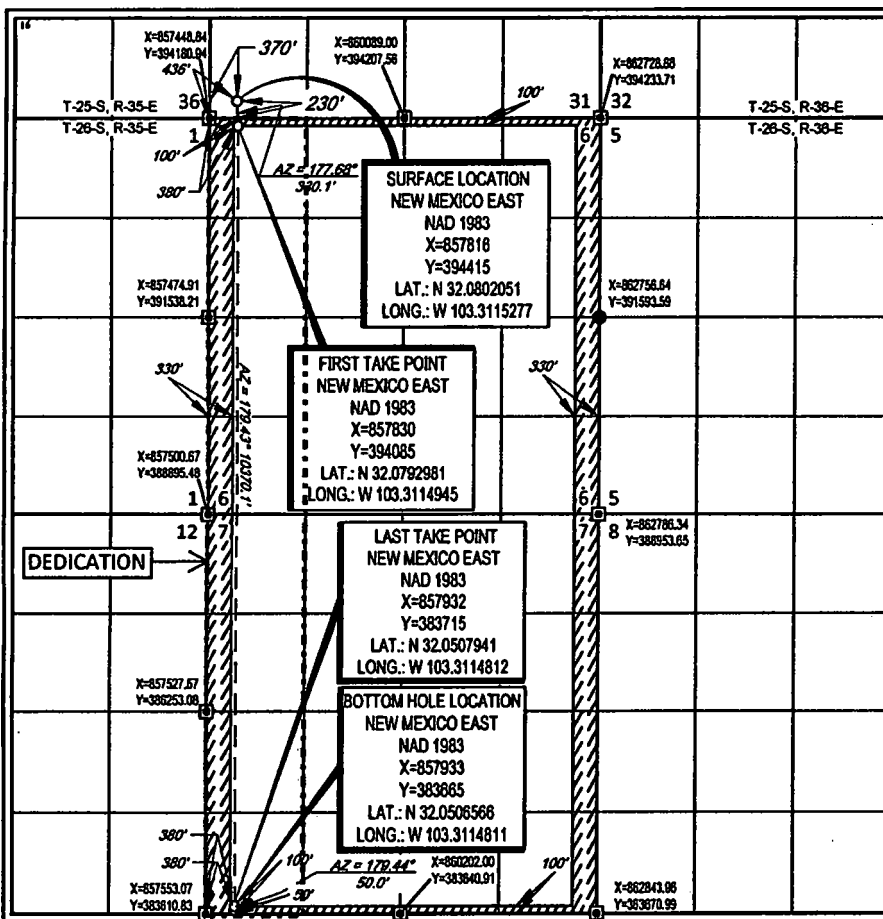
UL or lot no. M(4)	Section 31	Township 25-S	Range 36-E	Lot Ida 4	Feet from the 230'	North/South line SOUTH	Feet from the 370'	East/West line WEST	County LEA
-----------------------	---------------	------------------	---------------	--------------	-----------------------	---------------------------	-----------------------	------------------------	---------------

11 Bottom Hole Location If Different From Surface

UL or lot no. M(4)	Section 7	Township 26-S	Range 36-E	Lot Ida 4	Feet from the 50'	North/South line SOUTH	Feet from the 380'	East/West line WEST	County LEA
-----------------------	--------------	------------------	---------------	--------------	----------------------	---------------------------	-----------------------	------------------------	---------------

Dedicated Acres 320	Joint or Infill	Consolidation Code C	Order No.
------------------------	-----------------	-------------------------	-----------

No allowable will be assigned to this completion until all interests have been consolidated or a non-standard unit has been approved by the division.



17 OPERATOR CERTIFICATION

I hereby certify that the information contained herein is true and complete to the best of my knowledge and belief, and that this organization either owns a working interest or undivided mineral interest in the land including the proposed bottom hole location or has a right to drill this well at this location pursuant to a contract with an owner of such a mineral or working interest, or to a voluntary pooling agreement or a compulsory pooling order heretofore entered by the division.

Signature *Floyd Hammond* Date 2/22/19

Printed Name
Floyd Hammond

E-mail Address
fhammond@ameredev.com

18 SURVEYOR CERTIFICATION

I hereby certify that the well location shown on this plat was plotted from field notes of actual surveys made by me or under my supervision, and that the same is true to the best of my belief.

Date of Survey 8/5/2018
Signature of Professional Surveyor *[Signature]*

Professional Surveyor Seal: MICHAEL BROWN, NEW MEXICO, 18329, PROFESSIONAL SURVEYOR
Certificate Number

AMEREDEV

AMEREDEV OPERATING, LLC EXHIBIT 2A

SECTION 31, TOWNSHIP 25-S, RANGE 36-E, N.M.P.M.
LEA COUNTY, NEW MEXICO

SURFACE LOCATION
NEW MEXICO EAST
NAD 1983
X=857816
Y=394415
LAT.: N 32.0802051
LONG.: W 103.3115277

N 89°25'20"E
2640.22'
FND. BRASS CAP.
U.S. G.L.O. SUR.

FIRST TAKE POINT
NEW MEXICO EAST
NAD 1983
X=857830
Y=394085
LAT.: N 32.0792981
LONG.: W 103.3114945

LAST TAKE POINT
NEW MEXICO EAST
NAD 1983
X=857932
Y=383715
LAT.: N 32.0507941
LONG.: W 103.3114812

BOTTOM HOLE LOCATION
NEW MEXICO EAST
NAD 1983
X=857933
Y=383665
LAT.: N 32.0506566
LONG.: W 103.3114811

T-25-S, R-35-E
T-26-S, R-35-E
FND. BRASS CAP.
U.S. G.L.O. SUR.

T-25-S, R-36-E
T-26-S, R-36-E

FND. BRASS CAP.
U.S. G.L.O. SUR.

FND. BRASS CAP.
U.S. G.L.O. SUR.

1/2" IRON
ROD FOUND

FND. BRASS CAP.
U.S. G.L.O. SUR.

FND. BRASS CAP.
U.S. G.L.O. SUR.

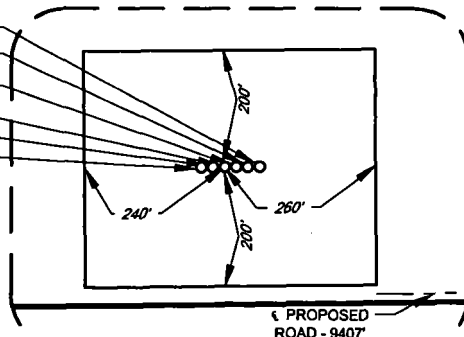
FND. BRASS CAP.
U.S. G.L.O. SUR.

FND. BRASS CAP.
U.S. G.L.O. SUR.

FND. BRASS CAP.
U.S. G.L.O. SUR.

FND. BRASS CAP.
U.S. G.L.O. SUR.

NANDINA FED COM 25 36 31 121H
NANDINA FED COM 25 36 31 111H
NANDINA FED COM 25 36 31 101H
GOLDEN BELL FED COM 26 36 06 121H
GOLDEN BELL FED COM 26 36 06 111H
GOLDEN BELL FED COM 26 36 06 101H



SCALE: 1" = 2000'
0' 1000' 2000'

LEASE NAME & WELL NO.: GOLDEN BELL FED COM 26 36 06 121H

SECTION 31 TWP 25-S RGE 36-E SURVEY N.M.P.M.
COUNTY LEA STATE NM
DESCRIPTION 230' FSL & 370' FWL

DISTANCE & DIRECTION
FROM INT. OF 3RD ST. N.M. 205/ERVING PAN RD. & N.M. 128 HEAD SOUTH ON

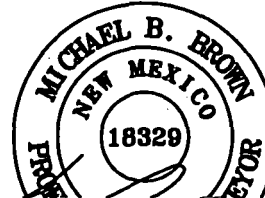


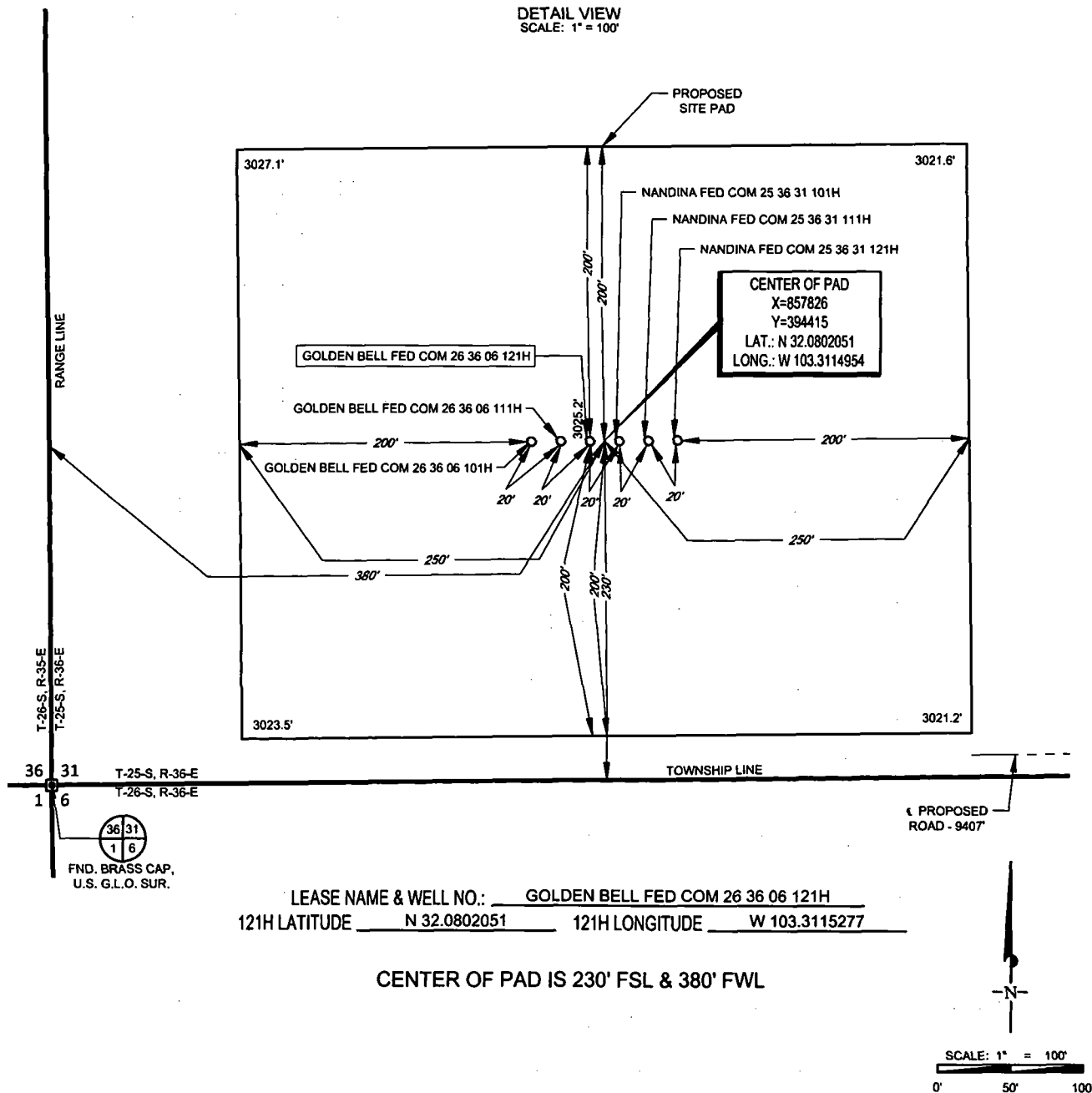
EXHIBIT 2B

AMEREDEV

AMEREDEV OPERATING, LLC

SECTION 31, TOWNSHIP 25-S, RANGE 36-E, N.M.P.M.
LEA COUNTY, NEW MEXICO

DETAIL VIEW
SCALE: 1" = 100'



ALL BEARINGS, DISTANCES, AND COORDINATE VALUES CONTAINED HEREON ARE GRID
BASED UPON THE NEW MEXICO STATE PLANE COORDINATE SYSTEM, EAST ZONE OF THE
NORTH AMERICAN DATUM 1983, U.S. SURVEY FEET

THIS PROPOSED PAD SITE LOCATION SHOWN HEREON HAS BEEN SURVEYED ON THE GROUND UNDER
MY SUPERVISION AND PREPARED ACCORDING TO THE EVIDENCE FOUND AT THE TIME OF SURVEY,
AND DATA PROVIDED BY AMEREDEV OPERATING LLC. THIS CERTIFICATION IS MADE AND LIMITED TO
THOSE PERSONS OR ENTITIES SHOWN ON THE FACE OF THIS PLAT AND IS NON-TRANSFERABLE. THIS
SURVEY IS CERTIFIED FOR THIS TRANSACTION ONLY.

ORIGINAL DOCUMENT SIZE: 8.5" X 11"

S:\SURVEY\AMEREDEV_OPERATING_ILLO\GOLDEN_BELL_FED_COM\FINAL_PRODUCTS\LO_GOLDEN_BELL_FED_COM_26_36_06_121H_REV1.DWG 11/26/2016 3:36:27 PM ccaston

TOPOGRAPHIC
LOYALTY INNOVATION LEGACY
1400 EVERMAN PARKWAY, Ste. 146 • FT. WORTH, TEXAS 76140
TELEPHONE: (817) 744-7512 • FAX (817) 744-7554
2803 NORTH BIG SPRING • MIDLAND, TEXAS 79705
TELEPHONE: (432) 682-1653 OR (800) 767-1653 • FAX (432) 682-1743
WWW.TOPOGRAPHIC.COM