

District I  
1625 N. French Dr., Hobbs, NM 88240  
Phone: (575) 393-6161 Fax: (575) 393-0720  
District II  
811 S. First St., Artesia, NM 88210  
Phone: (575) 748-1283 Fax: (575) 748-9720  
District III  
1000 Rio Brazos Road, Aztec, NM 87410  
Phone: (505) 334-6178 Fax: (505) 334-6170  
District IV  
1220 S. St. Francis Dr., Santa Fe, NM 87505  
Phone: (505) 476-3460 Fax: (505) 476-3462

State of New Mexico  
Energy, Minerals & Natural Resources  
Department  
OIL CONSERVATION DIVISION  
1220 South St. Francis Dr.  
Santa Fe, NM 87505

FORM C-102

Revised August 1, 2011

Submit one copy to appropriate

District Office

JUN 13 2019

RECEIVED

☐ AMENDED REPORT

WELL LOCATION AND ACREAGE DEDICATION PLAT

<sup>1</sup> API Number 30-025- <b>45585</b>	<sup>2</sup> Pool Code 98094	<sup>3</sup> Pool Name <b>BOBCAT DRAW; UPPER WOLFCAMP</b>
<sup>4</sup> Property Code 38481	<sup>5</sup> Property Name <b>CABALLO 23 FED</b>	<sup>6</sup> Well Number <b>#706H</b>
<sup>7</sup> OGRID No. 7377	<sup>8</sup> Operator Name <b>EOG RESOURCES, INC.</b>	<sup>9</sup> Elevation <b>3342'</b>

<sup>10</sup>Surface Location

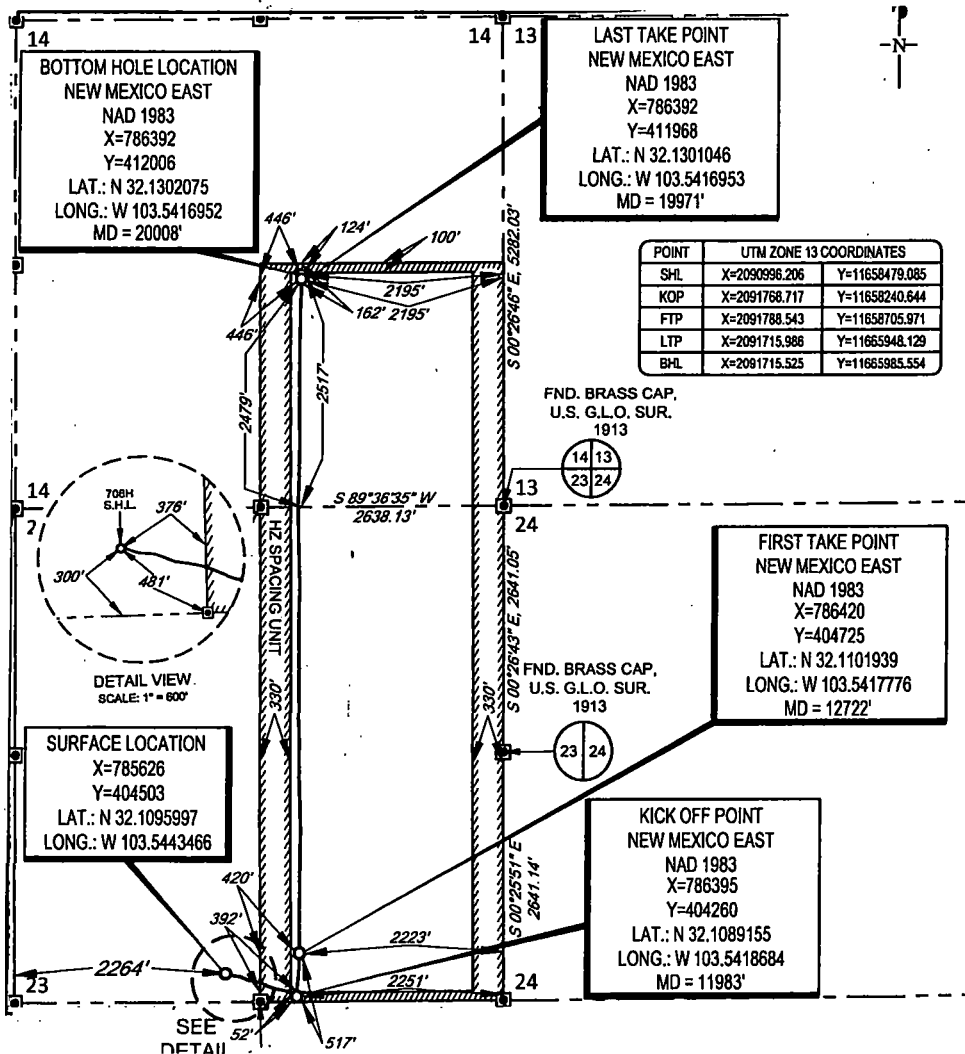
UL or lot no.	Section	Township	Range	Lot Idn	Feet from the	North/South line	Feet from the	East/West line	County
N	23	25-S	33-E	-	300'	SOUTH	2264'	WEST	LEA

<sup>11</sup>Bottom Hole Location If Different From Surface

UL or lot no.	Section	Township	Range	Lot Idn	Feet from the	North/South line	Feet from the	East/West line	County
J	14	25-S	33-E	-	2517'	SOUTH	2195'	EAST	LEA

<sup>12</sup> Dedicated Acres <b>480.00</b>	<sup>13</sup> Joint or Infill	<sup>14</sup> Consolidation Code	<sup>15</sup> Order No.
--	-------------------------------	----------------------------------	-------------------------

No allowable will be assigned to this completion until all interests have been consolidated or a non-standard unit has been approved by the division.



<sup>17</sup>OPERATOR CERTIFICATION

I hereby certify that the information contained herein is true and complete to the best of my knowledge and belief, and that this organization either owns a working interest or unless mineral interest in the land including the proposed bottom hole location or has a right to drill this well at this location pursuant to a contract with an owner of such a mineral or working interest, or to a voluntary pooling agreement or a compulsory pooling order heretofore entered by the division.

*Kay Maddox* 6/14/2019  
Signature Date

**KAY MADDUX**  
Printed Name

E-mail Address

<sup>18</sup>SURVEYOR CERTIFICATION

I hereby certify that the well location shown on this plat was plotted from field notes of actual surveys made by me or under my supervision, and that the same is true to the best of my belief.

Date of Survey  
Signature and Seal of Professional Surveyor

**MICHAEL BROWN**  
NEW MEXICO  
18329  
PROFESSIONAL SURVEYOR

Certificate Number

SCALE: 1" = 2000'

0' 1000' 2000'

SECTION 23, TOWNSHIP 25-S, RANGE 33-E, N.M.P.M.  
LEA COUNTY, NEW MEXICO

FND. BRASS CAP.  
U.S. G.L.O. SUR.  
1913

FND. BRASS CAP.  
U.S. G.L.O. SUR.  
1913

FND. BRASS CAP.  
U.S. G.L.O. SUR.  
1913

**BOTTOM HOLE LOCATION**  
NEW MEXICO EAST  
NAD 1983  
X=786392  
Y=412006  
LAT.: N 32.1302075  
LONG.: W 103.5416952  
MD = 20008'

**LAST TAKE POINT**  
NEW MEXICO EAST  
NAD 1983  
X=786392  
Y=411968  
LAT.: N 32.1301046  
LONG.: W 103.5416953  
MD = 19971'

POINT	UTM ZONE 13 COORDINATES	
SHL	X=2090996.206	Y=11658479.085
KOP	X=2091766.717	Y=11658240.644
FTP	X=2091788.543	Y=11658705.971
LTP	X=2091715.986	Y=11663948.129
BHL	X=2091715.525	Y=11663985.554

FND. BRASS CAP.  
U.S. G.L.O. SUR.  
1913

FND. BRASS CAP.  
U.S. G.L.O. SUR.  
1913

FND. BRASS CAP.  
U.S. G.L.O. SUR.  
1913

FND. BRASS CAP.  
U.S. G.L.O. SUR.  
1913

FND. BRASS CAP.  
U.S. G.L.O. SUR.  
1913

**FIRST TAKE POINT**  
NEW MEXICO EAST  
NAD 1983  
X=786420  
Y=404725  
LAT.: N 32.1101939  
LONG.: W 103.5417776  
MD = 12722'

**SURFACE LOCATION**  
X=785626  
Y=404503  
LAT.: N 32.1095997  
LONG.: W 103.5443466

**KICK OFF POINT**  
NEW MEXICO EAST  
NAD 1983  
X=786395  
Y=404260  
LAT.: N 32.1089155  
LONG.: W 103.5418684  
MD = 11983'

FND. BRASS CAP.  
U.S. G.L.O. SUR.  
1913

FND. BRASS CAP.  
U.S. G.L.O. SUR.  
1913

FND. BRASS CAP.  
U.S. G.L.O. SUR.  
1913

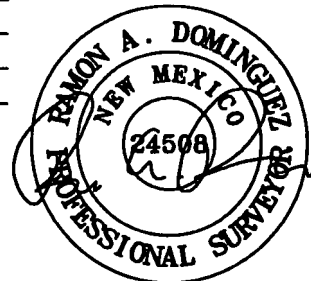
**DETAIL VIEW**  
SCALE: 1" = 600'

LEASE NAME & WELL NO.: CABALLO 23 FED #706H  
SECTION 23 TWP 25-S RGE 33-E SURVEY N.M.P.M.  
COUNTY LEA STATE NM ELEVATION 3342'  
DESCRIPTION 300' FSL & 2264' FWL



**TOPOGRAPHIC**  
LOYALTY INNOVATION LEGACY

1400 EVERMAN PARKWAY, Ste. 146 • FT. WORTH, TEXAS 76140  
TELEPHONE: (817) 744-7512 • FAX: (817) 744-7554  
2803 NORTH BIG SPRING • MIDLAND, TEXAS 79705  
TELEPHONE: (432) 682-1653 OR (800) 767-1653 • FAX: (432) 682-1743  
WWW.TOPOGRAPHIC.COM



Ramon A. Dominguez, P.S. No. 24508  
MAY 15, 2019



CABALLO 23 FED  
#706H  
AS-COMPLETED

REVISION:

NOTES:

1. ORIGINAL DOCUMENT SIZE: 8.5" X 11"
2. ALL BEARINGS, DISTANCES, AND COORDINATE VALUES CONTAINED HEREIN ARE GRID BASED UPON THE NEW MEXICO COORDINATE SYSTEM OF 1983, EAST ZONE, U.S. SURVEY FEET.
3. THIS WELL LOCATION SHOWN HEREON HAS BEEN SURVEYED ON THE GROUND UNDER MY SUPERVISION AND PREPARED ACCORDING TO THE EVIDENCE FOUND AT THE TIME OF SURVEY, AND DATA PROVIDED BY EOG RESOURCES, INC. THIS CERTIFICATION IS MADE AND LIMITED TO THOSE PERSONS OR ENTITIES SHOWN ON THE FACE OF THIS PLAT AND IS NON-TRANSFERABLE. THIS SURVEY IS CERTIFIED FOR THIS TRANSACTION ONLY.

DATE: 05/15/19

FILE:AD\_CABALLO\_23\_FED\_706H

DRAWN BY: TRG

SHEET: 1 OF 1