

District I
1625 N. French Dr., Hobbs, NM 88240
Phone: (575) 393-6161 Fax: (575) 393-0720
District II
811 S. First St., Artesia, NM 88210
Phone: (575) 748-1283 Fax: (575) 748-9720
District III
1000 Rio Brazos Road, Aztec, NM 87410
Phone: (505) 334-6178 Fax: (505) 334-6170
District IV
1220 S. St. Francis Dr., Santa Fe, NM 87505
Phone: (505) 476-3460 Fax: (505) 476-3462

State of New Mexico
Energy, Minerals & Natural Resources
Department
OIL CONSERVATION DIVISION
1220 South St. Francis Dr.
Santa Fe, NM 87505

HOBBS OCD

FORM C-102

Revised August 1, 2011

Submit one copy to appropriate

District Office

☐ AMENDED REPORT

WELL LOCATION AND ACREAGE DEDICATION PLAT

¹ API Number 30-025- 45588	² Pool Code 98094	³ Pool Name BOBCAT DRAW; UPPER WOLFCAMP
⁴ Property Code 38481	⁵ Property Name CABALLO 23 FED	⁶ Well Number #709H
⁷ GRID No. 7377	⁸ Operator Name EOG RESOURCES, INC.	⁹ Elevation 3343'

¹⁰Surface Location

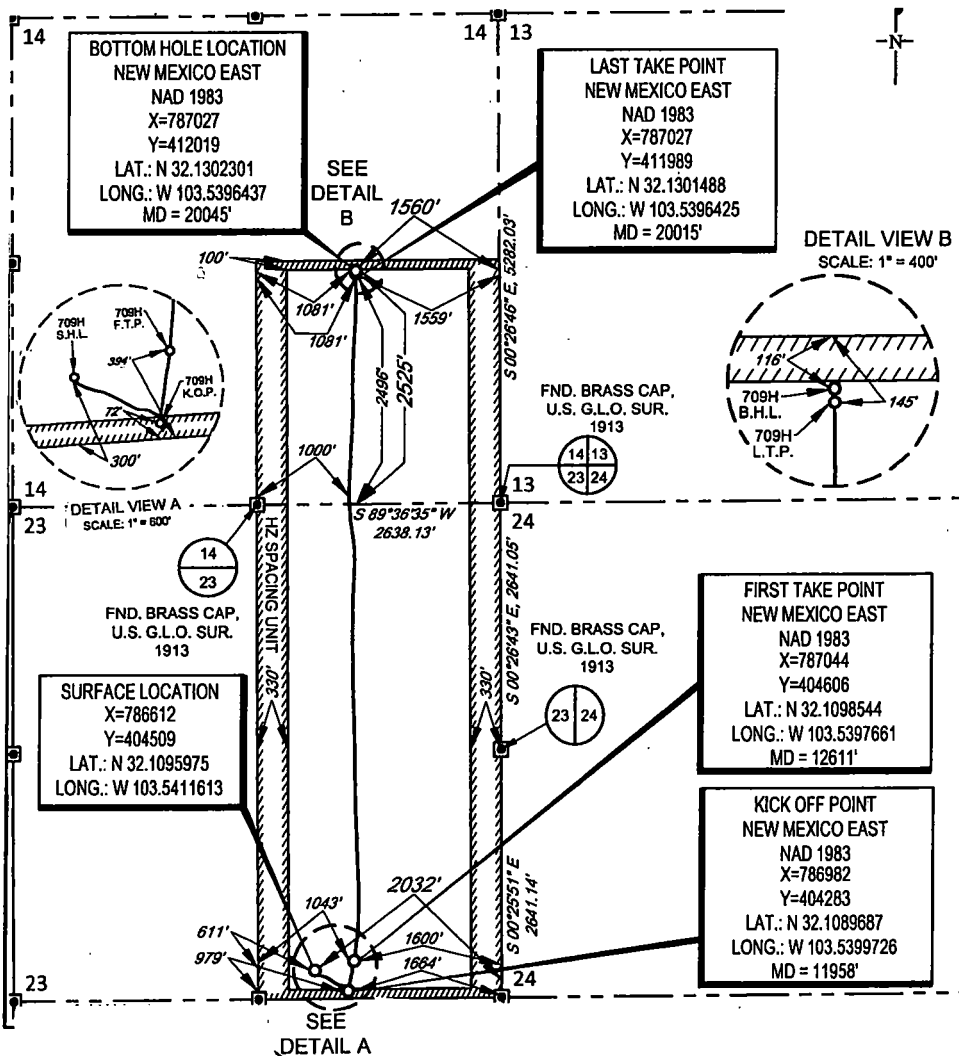
UL or lot no.	Section	Township	Range	Lot Idn	Feet from the	North/South line	Feet from the	East/West line	County
0	23	25-S	33-E	-	300'	SOUTH	2032'	EAST	LEA

¹¹Bottom Hole Location If Different From Surface

UL or lot no.	Section	Township	Range	Lot Idn	Feet from the	North/South line	Feet from the	East/West line	County
J	14	25-S	33-E	-	2496'	SOUTH	1559'	EAST	LEA

¹² Dedicated Acres 480.00	¹³ Joint or Infill	¹⁴ Consolidation Code	¹⁵ Order No.
--	-------------------------------	----------------------------------	-------------------------

No allowable will be assigned to this completion until all interests have been consolidated or a non-standard unit has been approved by the division.



¹⁷OPERATOR CERTIFICATION	
I hereby certify that the information contained herein is true and complete to the best of my knowledge and belief, and that this organization either owns a working interest or undivided mineral interest in the land including the proposed bottom hole location or has a right to drill this well at this location pursuant to a contract with an owner of such a mineral or working interest, or to a voluntary pooling agreement or a compulsory pooling order heretofore entered by the division.	
Signature <i>Kay Maddox</i>	Date 6/11/2019
Printed Name KAY MADDOX	
E-mail Address	
¹⁸SURVEYOR CERTIFICATION	
I hereby certify that the well location shown on this plat was plotted from field notes of actual surveys made by me or under my supervision, and that the same is true to the best of my belief.	
Date of Survey 6/11/2019	Professional Surveyor 18329
Certificate Number	

SCALE: 1" = 2000'

0' 1000' 2000'

SECTION 23, TOWNSHIP 25-S, RANGE 33-E, N.M.P.M.
LEA COUNTY, NEW MEXICO

FND. BRASS CAP.
U.S. G.L.O. SUR.
1913

FND. BRASS CAP.
U.S. G.L.O. SUR.
1913

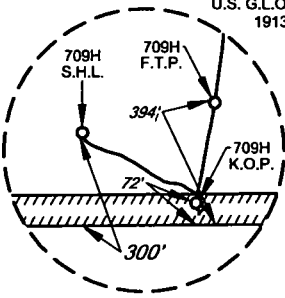
FND. BRASS CAP.
U.S. G.L.O. SUR.
1913

**BOTTOM HOLE LOCATION
NEW MEXICO EAST**
NAD 1983
X=787027
Y=412019
LAT.: N 32.1302301
LONG.: W 103.5396437
MD = 20045'

**LAST TAKE POINT
NEW MEXICO EAST**
NAD 1983
X=787027
Y=411989
LAT.: N 32.1301488
LONG.: W 103.5396425
MD = 20015'

DETAIL VIEW B
SCALE: 1" = 400'

POINT	UTM ZONE 13 COORDINATES
SHL	X=2091982.283 Y=11658491.625
KOP	X=2092353.351 Y=11658267.912
FTP	X=2092412.903 Y=11658590.915
LTP	X=2092351.110 Y=11665972.793
BHL	X=2092350.341 Y=11666002.372



DETAIL VIEW A
SCALE: 1" = 600'

**FIRST TAKE POINT
NEW MEXICO EAST**
NAD 1983
X=787044
Y=404606
LAT.: N 32.1098544
LONG.: W 103.5397661
MD = 12611'

**KICK OFF POINT
NEW MEXICO EAST**
NAD 1983
X=786982
Y=404283
LAT.: N 32.1089687
LONG.: W 103.5399726
MD = 11958'

SURFACE LOCATION
X=786612
Y=404509
LAT.: N 32.1095975
LONG.: W 103.5411613

LEASE NAME & WELL NO.: CABALLO 23 FED #709H

SECTION 23 TWP 25-S RGE 33-E SURVEY N.M.P.M.

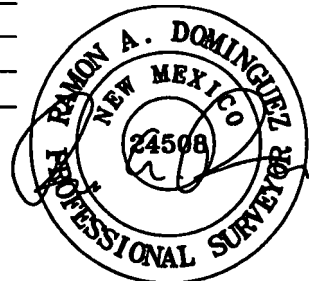
COUNTY LEA STATE NM ELEVATION 3343'

DESCRIPTION 300' FSL & 2032' FEL



TOPOGRAPHIC
LOYALTY INNOVATION LEGACY

1400 EVERMAN PARKWAY, Ste. 146 • FT. WORTH, TEXAS 76140
TELEPHONE: (817) 744-7512 • FAX: (817) 744-7554
2803 NORTH BIG SPRING • MIDLAND, TEXAS 79705
TELEPHONE: (432) 682-1653 OR (800) 787-1653 • FAX: (432) 682-1743
WWW.TOPOGRAPHIC.COM



Ramon A. Dominguez, P.S. No. 24508

MAY 9, 2019

eg resources, Inc.

CABALLO 23 FED #709H AS-COMPLETED	REVISION:
DATE: 05/09/19	
FILE: AD_CABALLO_23_FED_709H	
DRAWN BY: H.B.	
SHEET: 1 OF 1	

NOTES:

1. ORIGINAL DOCUMENT SIZE: 8.5" X 11"
2. ALL BEARINGS, DISTANCES, AND COORDINATE VALUES CONTAINED HEREIN ARE GRID BASED UPON THE NEW MEXICO COORDINATE SYSTEM OF 1983, EAST ZONE, U.S. SURVEY FEET.
3. THIS WELL LOCATION SHOWN HEREON HAS BEEN SURVEYED ON THE GROUND UNDER MY SUPERVISION AND PREPARED ACCORDING TO THE EVIDENCE FOUND AT THE TIME OF SURVEY, AND DATA PROVIDED BY EOG RESOURCES, INC. THIS CERTIFICATION IS MADE AND LIMITED TO THOSE PERSONS OR ENTITIES SHOWN ON THE FACE OF THIS PLAT AND IS NON-TRANSFERABLE. THIS SURVEY IS CERTIFIED FOR THIS TRANSACTION ONLY.