

District I  
1625 N. French Dr., Hobbs, NM 88240  
Phone: (575) 393-6161 Fax: (575) 393-0720  
District II  
811 S. First St., Artesia, NM 88210  
Phone: (575) 748-1283 Fax: (575) 748-9720  
District III  
1000 Rio Brazos Road, Aztec, NM 87410  
Phone: (505) 334-6178 Fax: (505) 334-6170  
District IV  
1220 S. St. Francis Dr., Santa Fe, NM 87505  
Phone: (505) 476-3460 Fax: (505) 476-3462

State of New Mexico  
Energy, Minerals & Natural Resources  
Department  
OIL CONSERVATION DIVISION  
1220 South St. Francis Dr.  
Santa Fe, NM 87505

FORM C-102  
Revised August 1, 2011  
Submit one copy to appropriate  
District Office  
AMENDED REPORT

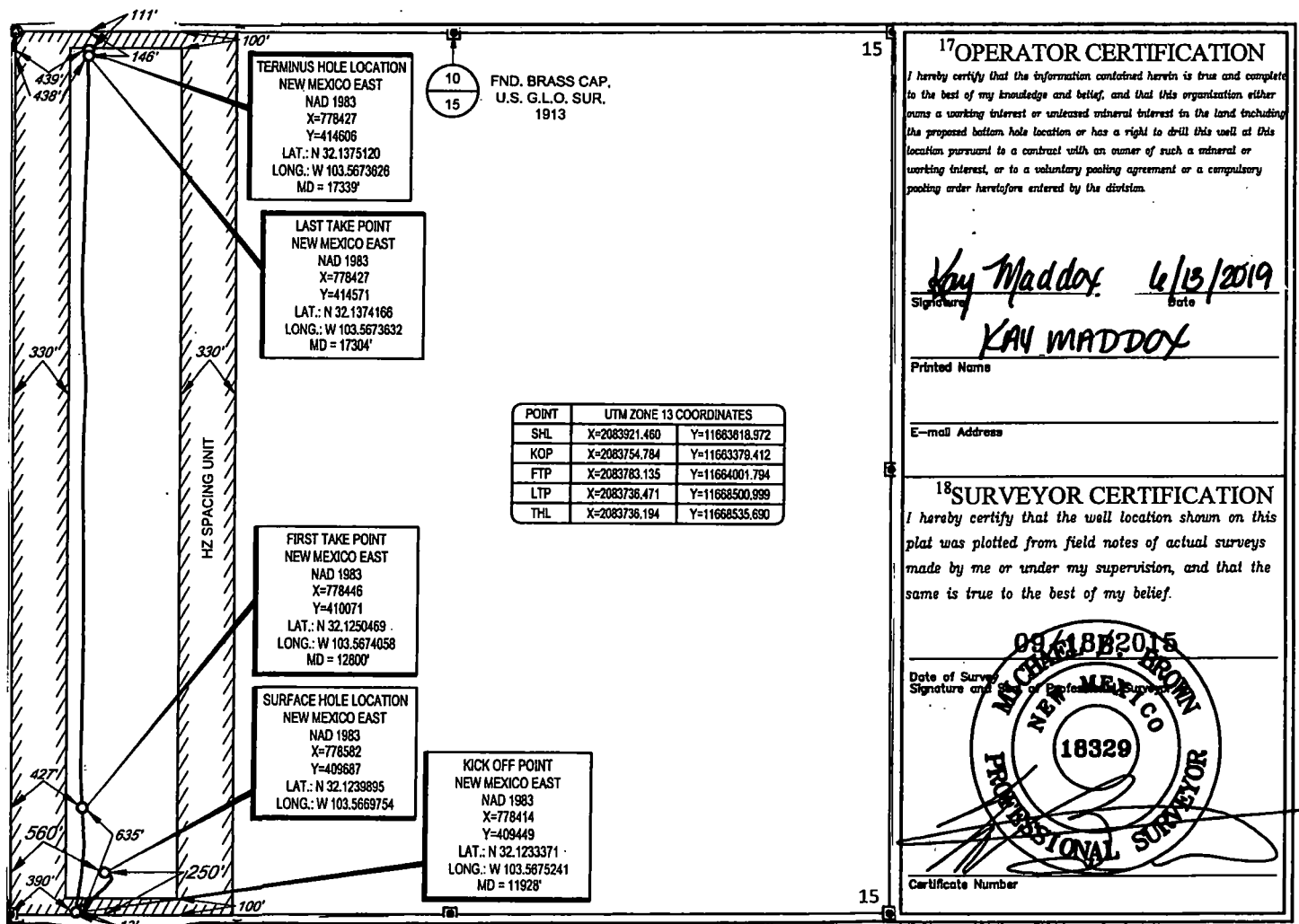
WELL LOCATION AND ACREAGE DEDICATION PLAT

<sup>1</sup> API Number 30-025-42877	<sup>2</sup> Pool Code 98180	<sup>3</sup> Pool Name WC-025 G-09 S253309P; Upper Wolfcamp
<sup>4</sup> Property Code 315310	<sup>5</sup> Property Name STREETCAR 15 FED	<sup>6</sup> Well Number #706H
<sup>7</sup> OGRID No. 7377	<sup>8</sup> Operator Name EOG RESOURCES, INC.	<sup>9</sup> Elevation 3371'

<sup>10</sup> Surface Location									
UL or lot no. M	Section 15	Township 25-S	Range 33-E	Lot Idn -	Feet from the 250'	North/South line SOUTH	Feet from the 560'	East/West line WEST	County LEA

<sup>11</sup> Bottom Hole Location If Different From Surface									
UL or lot no. D	Section 15	Township 25-S	Range 33-E	Lot Idn -	Feet from the 111'	North/South line NORTH	Feet from the 439'	East/West line WEST	County LEA
<sup>12</sup> Dedicated Acres 160	<sup>13</sup> Joint or Infill	<sup>14</sup> Consolidation Code	<sup>15</sup> Order No.						

No allowable will be assigned to this completion until all interests have been consolidated or a non-standard unit has been approved by the division.

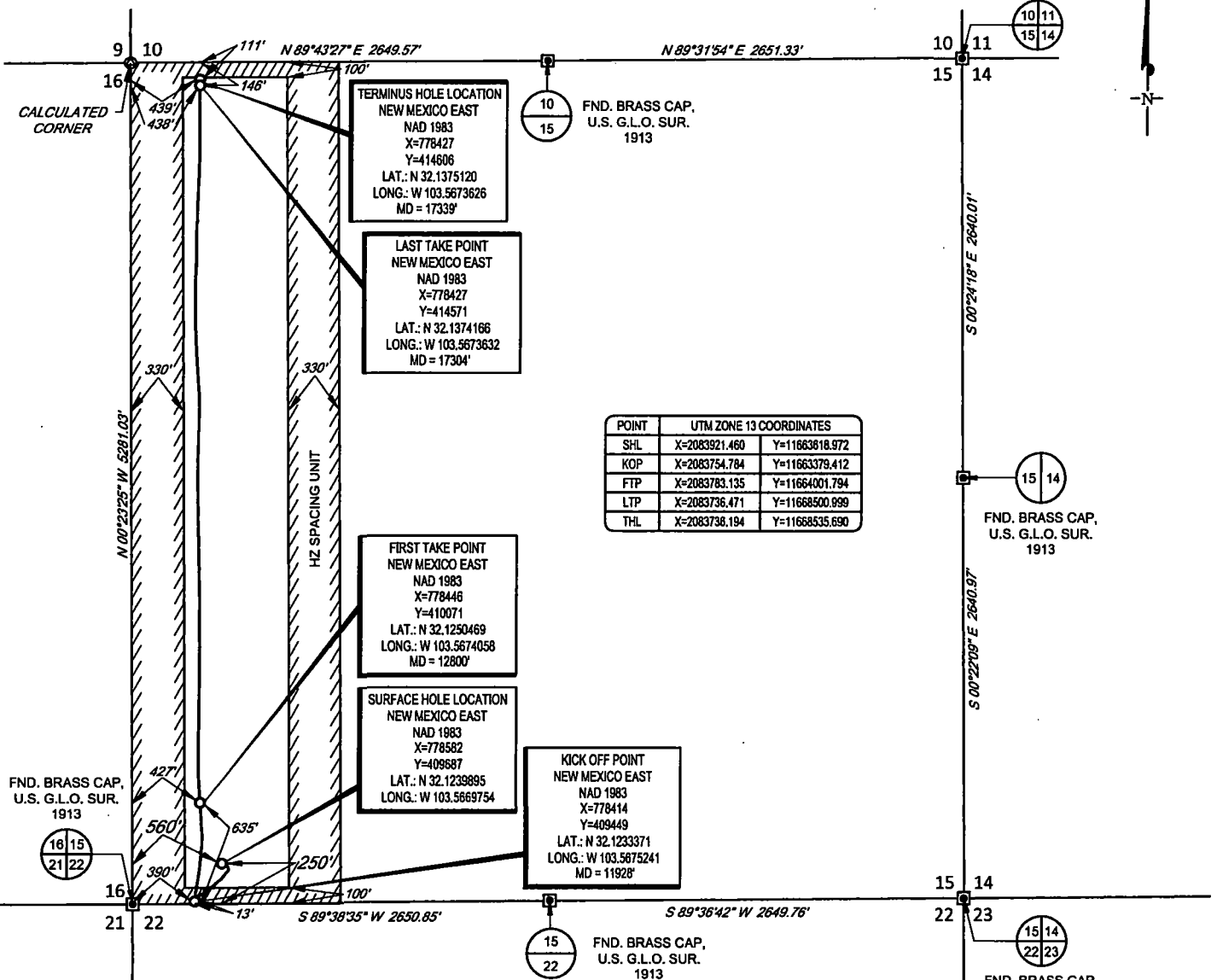


SCALE: 1" = 1000'

0' 500' 1000'

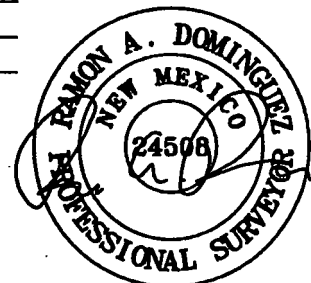
SECTION 15, TOWNSHIP 25-S, RANGE 33-E, N.M.P.M.  
LEA COUNTY, NEW MEXICO

FND. BRASS CAP,  
U.S. G.L.O. SUR.  
1913



LEASE NAME & WELL NO.: STREETCAR 15 FED #706H  
SECTION 15 TWP 25-S RGE 33-E SURVEY N.M.P.M.  
COUNTY LEA STATE NM ELEVATION 3371'  
DESCRIPTION 250' FSL & 560' FWL

**TOPOGRAPHIC**  
LOYALTY INNOVATION LEGACY  
1400 EVERMAN PARKWAY, Ste. 148 • FT. WORTH, TEXAS 76140  
TELEPHONE: (817) 744-7512 • FAX (817) 744-7554  
TEXAS FIRM REGISTRATION NO. 10042504  
WWW.TOPOGRAPHIC.COM



Ramon A. Dominguez, P.S. No. 24508  
MAY 17, 2019

**EOG resources, Inc.**

STREETCAR 15 FED #706H AS-COMPLETED	REVISION:	<b>NOTES:</b> 1. ORIGINAL DOCUMENT SIZE: 8.5" X 11" 2. ALL BEARINGS, DISTANCES, AND COORDINATE VALUES CONTAINED HEREIN ARE GRID BASED UPON THE NEW MEXICO COORDINATE SYSTEM OF 1983, EAST ZONE, U.S. SURVEY FEET. 3. THIS WELL LOCATION SHOWN HEREON HAS BEEN SURVEYED ON THE GROUND UNDER MY SUPERVISION AND PREPARED ACCORDING TO THE EVIDENCE FOUND AT THE TIME OF SURVEY, AND DATA PROVIDED BY EOG RESOURCES, INC. THIS CERTIFICATION IS MADE AND LIMITED TO THOSE PERSONS OR ENTITIES SHOWN ON THE FACE OF THIS PLAT AND IS NON-TRANSFERABLE. THIS SURVEY IS CERTIFIED FOR THIS TRANSACTION ONLY. 5. ADJOINER INFORMATION SHOWN FOR INFORMATIONAL PURPOSES ONLY.
DATE: 05/17/19		
FILE: AD_STREETCAR15FED_706H		
DRAWN BY: IMU		
SHEET: 1 OF 1		