

DISTRICT I
1625 N. French Dr., Hobbs, NM 88240
Phone (575) 893-6161 Fax: (575) 893-0720

DISTRICT II
811 S. First St., Artesia, NM 88210
Phone (505) 834-6176 Fax: (505) 834-6170

DISTRICT III
1000 Rio Brazos Rd., Aztec, NM 87410
Phone (505) 834-6176 Fax: (505) 834-6170

DISTRICT IV
1226 S. St. Francis Dr., Santa Fe, NM 87505
Phone (505) 476-3450 Fax: (505) 476-3453

State of New Mexico
Energy, Minerals and Natural Resources Department

OIL CONSERVATION DIVISION
1226 South St. Francis Dr.
Santa Fe, New Mexico 87505

Form C-102
Revised August 1, 2011

Submit one copy to appropriate
District Office

WELL LOCATION AND ACREAGE DEDICATION PLAT

☐ AMENDED REPORT

API Number 30-025-44851	Pool Code 98282	Pool Name WC-025 G-08 S213201D; WOLFCAMP
Property Code	Property Name MINIS 1 FED COM WCA	Well Number 10H
OGRID No. 372137	Operator Name CHISHOLM ENERGY OPERATING, LLC	Elevation 3722'

Surface Location

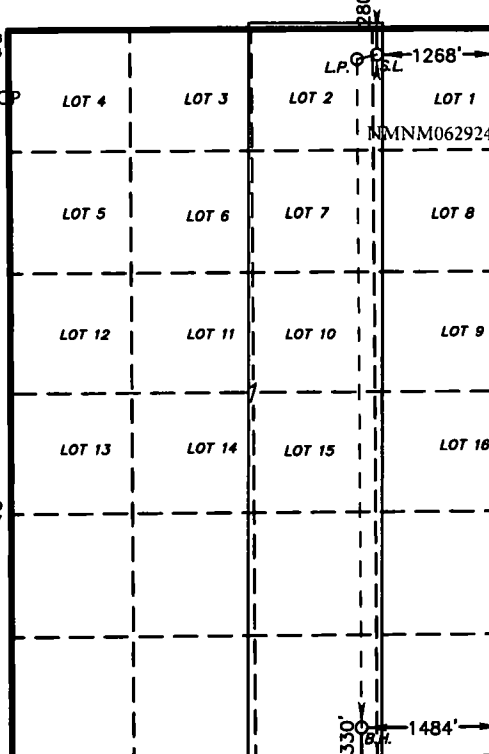
UL or lot No. A LOT 1	Section 1	Township 21 S	Range 32 E	Lot Idn 1	FEET from the 280	North/South line NORTH	FEET from the 1268	East/West line EAST	County LEA
--------------------------	--------------	------------------	---------------	--------------	----------------------	---------------------------	-----------------------	------------------------	---------------

Bottom Hole Location If Different From Surface

UL or lot No. 0	Section 1	Township 21 S	Range 32 E	Lot Idn	FEET from the 330	North/South line SOUTH	FEET from the 1484	East/West line EAST	County LEA
--------------------	--------------	------------------	---------------	---------	----------------------	---------------------------	-----------------------	------------------------	---------------

Dedicated Acres 238.75	Joint or Infill	Consolidation Code	Order No.
---------------------------	-----------------	--------------------	-----------

NO ALLOWABLE WILL BE ASSIGNED TO THIS COMPLETION UNTIL ALL INTERESTS HAVE BEEN CONSOLIDATED
OR A NON-STANDARD UNIT HAS BEEN APPROVED BY THE DIVISION

<p>SURFACE LOCATION/KOP Lat - N 32.521579 Long - W 103.623968 NMSPCE- N 554208.9 E 759980.7 (NAD-83) FIRST TAKE POINT/ LANDING POINT 330 FNL & 1484 FEL Lat - N 32.521442 Long - W 103.624669 NMSPCE- N 554157.7 E 759765.1 (NAD-83)</p> <p>LAST TAKE POINT/ PROPOSED BOTTOM HOLE LOCATION Lat - N 32.501596 Long - W 103.624641 NMSPCE- N 546937.5 E 759821.6 (NAD-83)</p>	 <p>LOT 1 LOT 2 LOT 3 LOT 4 LOT 5 LOT 6 LOT 7 LOT 8 LOT 9 LOT 10 LOT 11 LOT 12 LOT 13 LOT 14 LOT 15 LOT 16</p>	<p>OPERATOR CERTIFICATION I hereby certify that the information contained herein is true and complete to the best of my knowledge and belief, and that this organization either owns a working interest or released mineral interest in the land including the proposed bottom hole location or has a right to drill this well at this location pursuant to a contract with an owner of such a mineral or working interest, or to a voluntary pooling agreement or a compulsory pooling order heretofore entered by the division.</p> <p><i>Jennifer Elrod</i> 6/20/19 Signature Date</p> <p>Jennifer Elrod Printed Name jelrod@chisholmenergy.com Email Address</p> <p>SURVEYOR CERTIFICATION I hereby certify that the well location shown on this plat was plotted from field notes of actual surveys made by me or under my supervision and that the same is true and correct to the best of my belief.</p> <p>Date Surveyed Signature of Professional Surveyor Certificate No. 7977 Basin Surveyors</p> <p>0' 1000' 2000' 3000' 4000' SCALE: 1" = 1000' WO Num.: 34614</p>
--	---	---

NMNM062924

Intent ☒ As Drilled ☐API #
30-025-44851

NMNM062924

Operator Name: CHISHOLM ENERGY OPERATING, LLC	Property Name: MINIS 1 FED COM WCA	Well Number 10H
--	---------------------------------------	--------------------

Kick Off Point (KOP)

UL	Section 1	Township 21S	Range 32E	Lot 1	Feet 330	From N/S NORTH	Feet 1484	From E/W EAST	County LEA
Latitude 32.521442					Longitude -103.624669				NAD 83

First Take Point (FTP)

UL	Section 1	Township 21S	Range 32E	Lot 2	Feet 330	From N/S NORTH	Feet 1484	From E/W EAST	County LEA
Latitude 32.501442					Longitude -103.624669				NAD 83

Last Take Point (LTP)

UL O	Section 1	Township 21S	Range 32E	Lot	Feet 330	From N/S SOUTH	Feet 1484	From E/W EAST	County LEA
Latitude 32.501586					Longitude -103.624641				NAD 83

Is this well the defining well for the Horizontal Spacing Unit? ☒Is this well an infill well? ☐

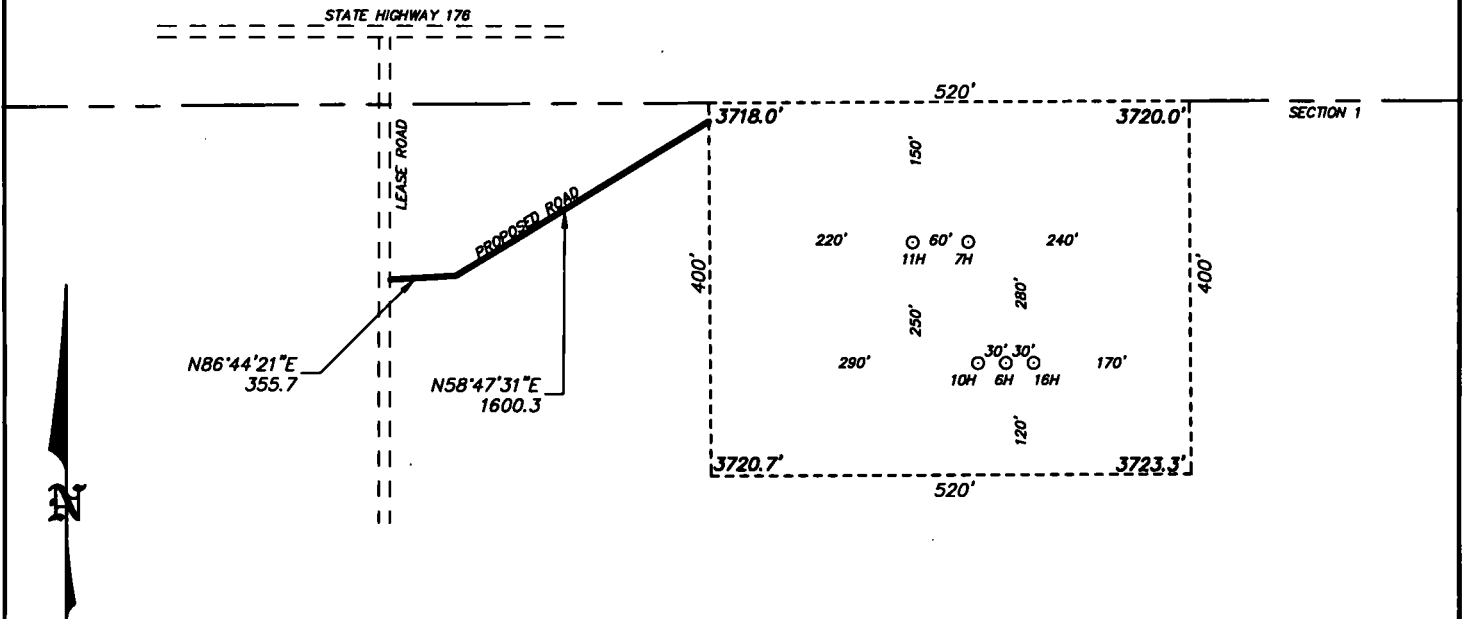
If infill is yes please provide API if available, Operator Name and well number for Defining well for Horizontal Spacing Unit.

API #

Operator Name:	Property Name:	Well Number
----------------	----------------	-------------

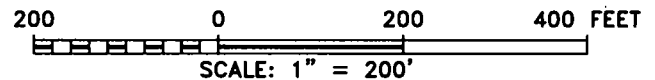
KZ 06/29/2018

SECTION 1, TOWNSHIP 21 SOUTH, RANGE 32 EAST, N.M.P.M.,
LEA COUNTY, NEW MEXICO.



CHISHOLM ENERGY OPERATING, LLC
MINIS 1 FED COM WCA 10H
ELEV. - 3722'
Lat - N 32.521579
Long - W 103.623968
NMSPCE- N 554208.9
E 759980.7
(NAD-83)

EUNICE, NM IS ±28 MILES TO THE SOUTHEAST OF LOCATION.



Directions to Location:

FROM THE INTERSECTION OF US 62-180 & STATE
HIGHWAY 176, GO SOUTH ON HIGHWAY 176 TO MILE
MARKER 6, CONTINUE 0.4 MILES TO LEASE ROAD
THEN GO SOUTH 300 FEET TO PROPOSED ROAD.

basin
surveys
focused on excellence
in the oilfield

P.O. Box 1786 (575) 393-7316 - Office
1120 N. West County Rd. (575) 392-2206 - Fax
Hobbs, New Mexico 88241 basin-surveys.com

CHISHOLM ENERGY OPERATING, LLC

REF: MINIS 1 FED COM WCA 10H / WELL PAD TOPO

THE MINIS 1 FED COM WCA 10H LOCATED 280' FROM
THE NORTH LINE AND 1268' FROM THE EAST LINE OF
SECTION 1, TOWNSHIP 21 SOUTH, RANGE 32 EAST,
N.M.P.M., LEA COUNTY, NEW MEXICO.

W.O. Number: 34614 Drawn By: J GOAD Date: 6-7-2019 Survey Date: 6-4-2019 Sheet 1 of 1 Sheets