

OBBS OCD  
JUL 11 2019  
RECEIVED  
ATION PLAT

**FORM C-102**  
**Revised August 1, 2011**  
**one copy to appropriate**  
**District Office**

☐ **AMENDED REPORT**

# WELL LOCATION AND ACREAGE DEDICATION PLAT

<sup>1</sup> API Number 30-025-46126	<sup>2</sup> Pool Code 96674	<sup>3</sup> Pool Name Triple X ; Bone Spring, West
<sup>4</sup> Property Code 325410	<sup>5</sup> Property Name HYPERION STATE	<sup>6</sup> Well Number 141H
<sup>7</sup> OGRID No. 372043	<sup>8</sup> Operator Name TAP ROCK OPERATING, LLC.	<sup>9</sup> Elevation 3537'

### <sup>10</sup>Surface Location

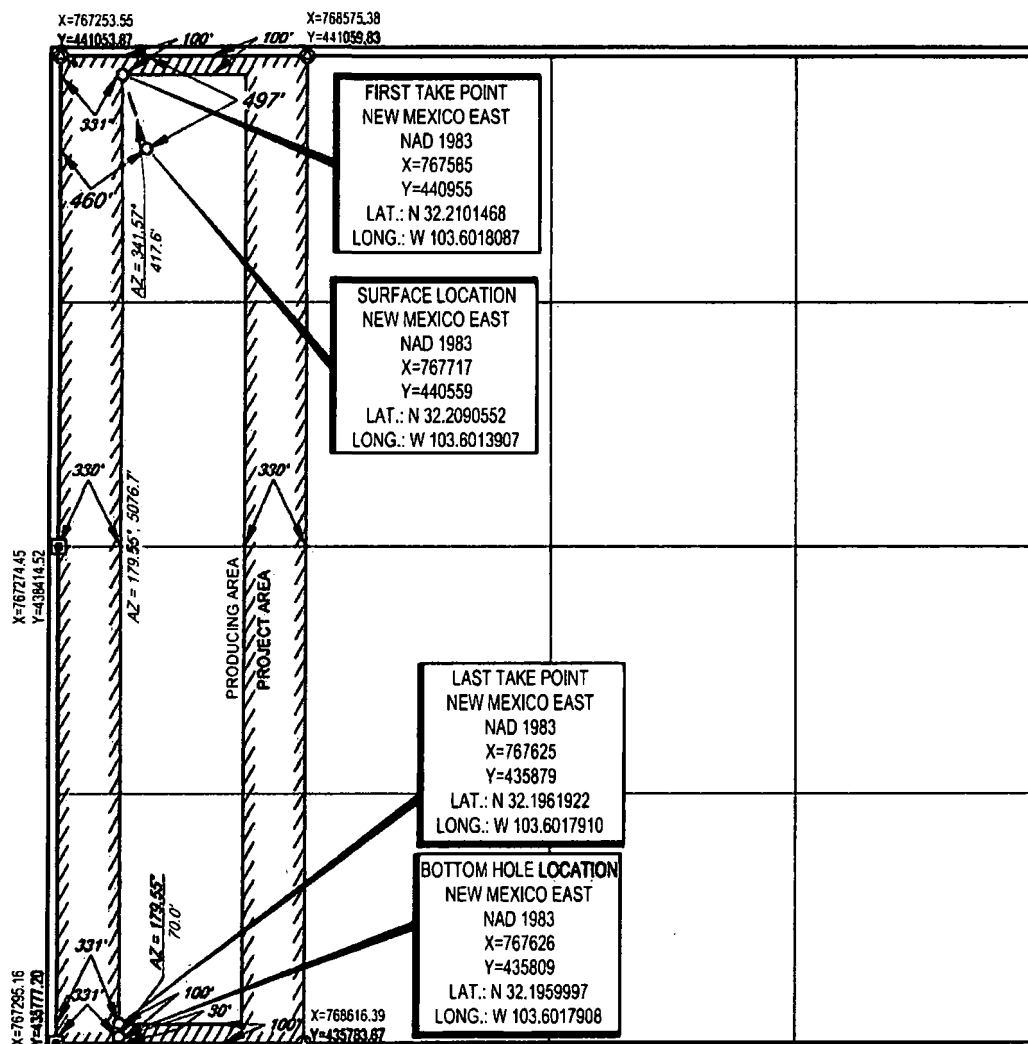
UL or lot no.	Section	Township	Range	Lot Idn	Feet from the	North/South line	Feet from the	East/West line	County
D	20	24-S	33-E	-	497'	NORTH	460'	WEST	LEA

<sup>11</sup>Bottom Hole Location If Different From Surface

UL or lot no.	Section	Township	Range	Lot Idn	Feet from the	North/South line	Feet from the	East/West line	County
M	20	24-S	33-E	-	30'	SOUTH	331'	WEST	LEA

<sup>13</sup> Dedicated Acres	<sup>14</sup> Joint or Infill	<sup>15</sup> Consolidation Code	<sup>16</sup> Order No.
-------------------------------	-------------------------------	----------------------------------	-------------------------

No allowable will be assigned to this completion until all interests have been consolidated or a non-standard unit has been approved by the division.



# 17 OPERATOR CERTIFICATION

I hereby certify that the information contained herein is true and complete to the best of my knowledge and belief, and that this organization either owns a working interest or undivided mineral interest in the land including the proposed bottom hole location or has a right to drill this well at this location pursuant to a contract with an owner of such a mineral or working interest, or to a voluntary pooling agreement or a compulsory pooling order heretofore entered by the division.

Rachelle Reese 7/11/19

Signature

Date

Rachelle Reese

Printed Name

rreese@tprk.com

E-mail Address

# 18 SURVEYOR CERTIFICATION

I hereby certify that the well location shown on this plat was plotted from field notes of actual surveys made by me or under my supervision, and that the same is true to the best of my belief.

06/07/2019

Date of Survey

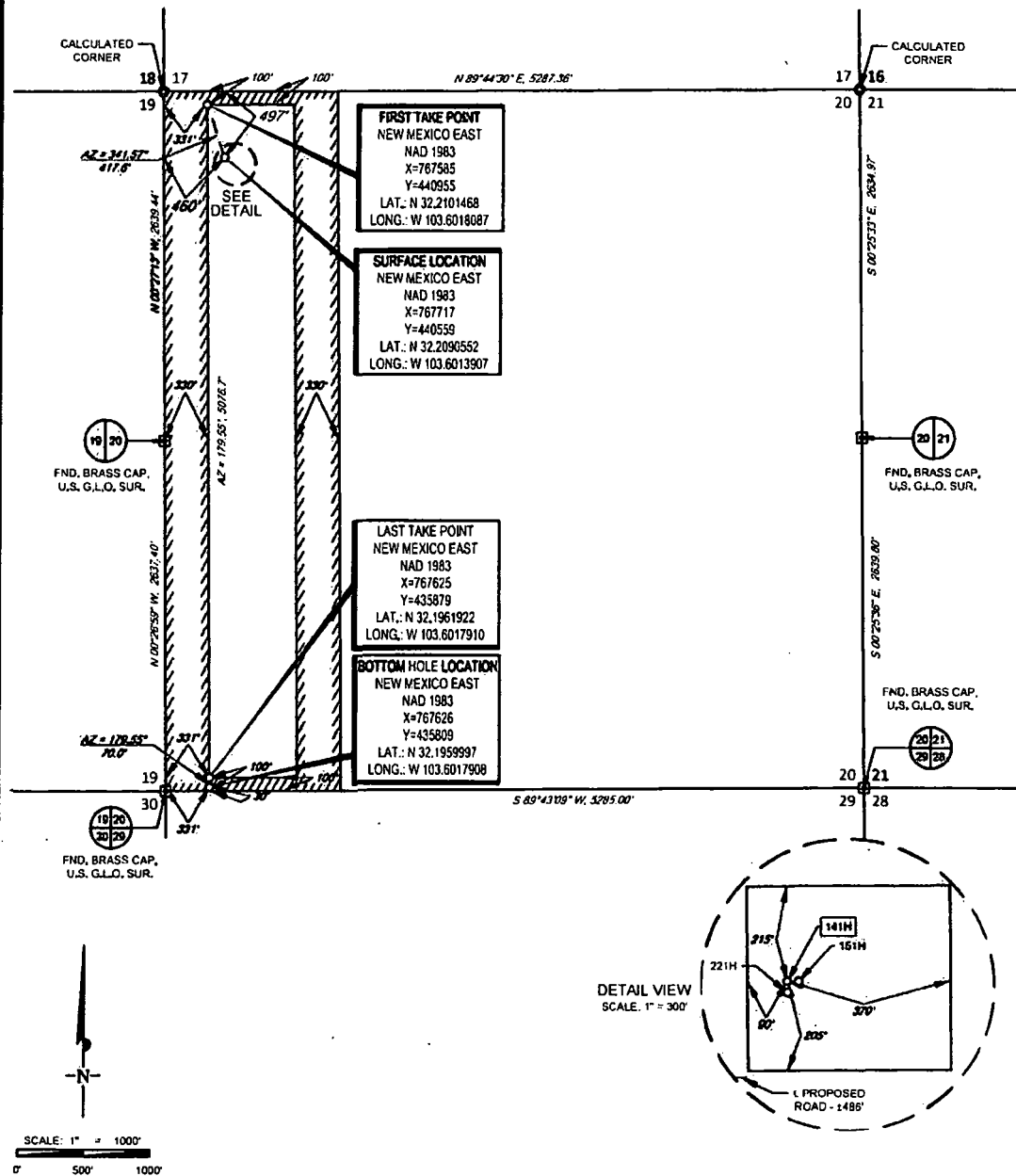
Signature of

or Professional Engineer

Certificate Number

# TAP ROCK EXHIBIT 2A

SECTION 20, TOWNSHIP 24-S, RANGE 33-E, N.M.P.M.  
LEA COUNTY, NEW MEXICO



LEASE NAME & WELL NO.: HYPERION STATE 141H

SECTION 20 TWP 24-S RGE 33-E SURVEY N.M.P.M.  
COUNTY LEA STATE NM  
DESCRIPTION 497' FNL & 460' FWL

DISTANCE & DIRECTION  
FROM INT. OF NM-128 & DELAWARE BASIN RD., GO WEST ON NM-128  
±5.4 MILES, THENCE SOUTH (LEFT) ON A LEASE RD. ±880 FEET,  
THENCE NORTHEAST (LEFT) ON A PROPOSED RD. ±488 FEET TO A  
POINT ±238 FEET SOUTHWEST OF THE LOCATION.

ALL BEARINGS, DISTANCES, AND COORDINATE VALUES CONTAINED HEREON ARE GRID  
BASED UPON THE NEW MEXICO COORDINATE SYSTEM OF 1983, EAST ZONE, U.S. SURVEY  
FEET  
THIS EASEMENT/SERVITUDE LOCATION SHOWN HEREON HAS BEEN SURVEYED ON THE GROUND  
UNDER MY SUPERVISION AND PREPARED ACCORDING TO THE EVIDENCE FOUND AT THE TIME OF  
SURVEY AND DATA PROVIDED BY TAP ROCK OPERATING, LLC. THIS CERTIFICATION IS MADE AND  
LIMITED TO THOSE PERSONS OR ENTITIES SHOWN ON THE FACE OF THIS PLAT AND IS  
NON-TRANSFERABLE. THIS SURVEY IS CERTIFIED FOR THIS TRANSACTION ONLY.

"PRELIMINARY. THIS DOCUMENT SHALL NOT  
BE RECORDED FOR ANY PURPOSE."

John Trevor Carnegie, P.S. No. 11401  
JUNE 7, 2019

**TOPOGRAPHIC**  
LOYALTY INNOVATION LEGACY.  
1400 EVERMAN PARKWAY, Ste. 140 • FT. WORTH, TEXAS 76140  
TELEPHONE (817) 744-7519 • FAX (817) 744-7054  
2803 NORTH 513 SPRINGS • MIDLAND, TEXAS 79705  
TELEPHONE (432) 682-1653 OR (800) 767-1853 • FAX (432) 682-1743  
WWW.TOPOGRAPHIC.COM