

District I  
1625 N. French Dr., Hobbs, NM 88240  
Phone: (575) 393-6161 Fax: (575) 393-0720  
District II  
811 S. First St., Artesia, NM 88210  
Phone: (505) 748-1283 Fax: (575) 748-9720  
District III  
1000 Rio Brazos Road, Aztec, NM 87410  
Phone: (505) 334-6178 Fax: (505) 334-6170  
District IV  
1220 S. St. Francis Dr., Santa Fe, NM 87505  
Phone: (505) 476-3460 Fax: (505) 476-3462

State of New Mexico  
Energy, Minerals & Natural Resources  
Department  
OIL CONSERVATION DIVISION  
1220 South St. Francis Dr.  
Santa Fe, NM 87505

FORM C-102

Revised August 1, 2011

Submit one copy to appropriate

District Office

☐ AMENDED REPORT

WELL LOCATION AND ACREAGE DEDICATION PLAT

API Number <b>30-025-46238</b>		Pool Code <b>98135</b>	Pool Name <b>WC-025 G-09 5243310P; UPR WC</b>
Property Code <b>325667</b>	Property Name <b>POSEIDON STATE COM</b>		Well Number <b>205H</b>
OGRID No. <b>372043</b>	Operator Name <b>TAP ROCK OPERATING, LLC.</b>		Elevation <b>3610'</b>

<sup>10</sup>Surface Location

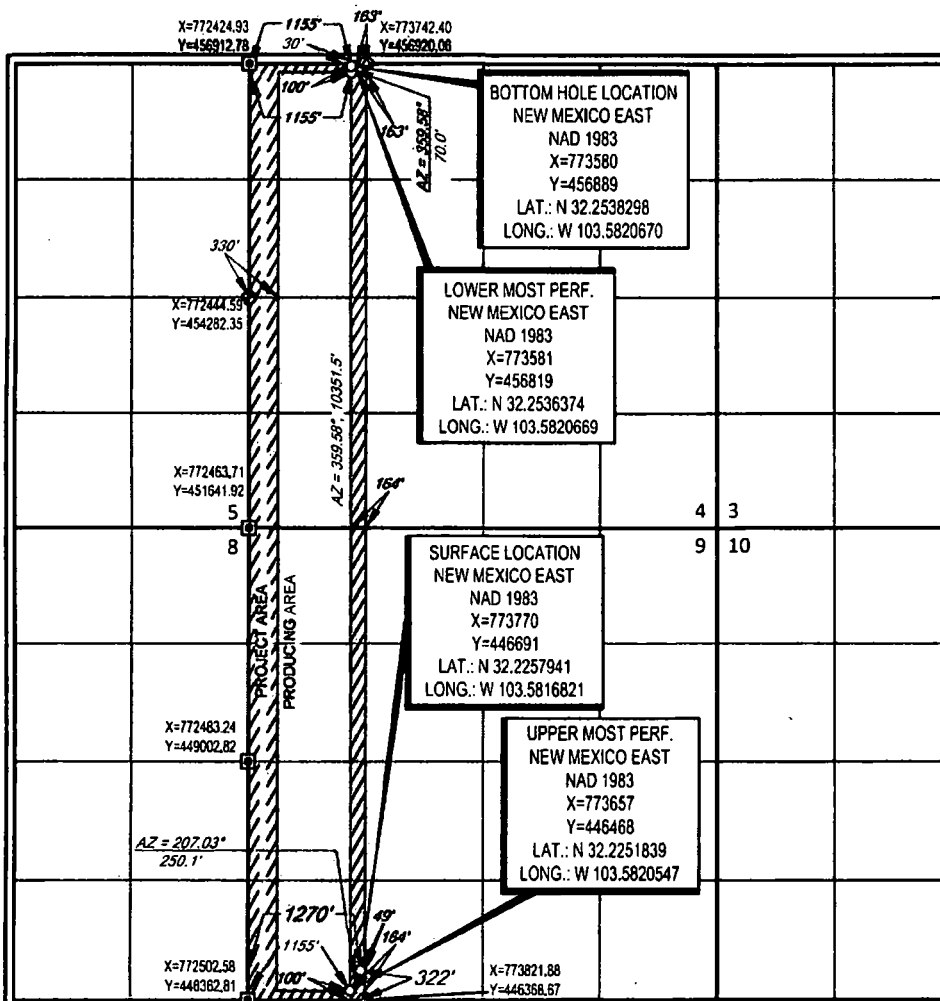
UL or lot no.	Section	Township	Range	Lot Idn	Feet from the	North/South line	Feet from the	East/West line	County
<b>M</b>	<b>9</b>	<b>24-S</b>	<b>33-E</b>	<b>-</b>	<b>322'</b>	<b>SOUTH</b>	<b>1270'</b>	<b>WEST</b>	<b>LEA</b>

<sup>11</sup>Bottom Hole Location If Different From Surface

UL or lot no.	Section	Township	Range	Lot Idn	Feet from the	North/South line	Feet from the	East/West line	County
<b>D</b>	<b>4</b>	<b>24-S</b>	<b>33-E</b>	<b>-</b>	<b>30'</b>	<b>NORTH</b>	<b>1155'</b>	<b>WEST</b>	<b>LEA</b>

<sup>12</sup> Dedicated Acres	<sup>13</sup> Joint or Infill	<sup>14</sup> Consolidation Code	<sup>15</sup> Order No.

No allowable will be assigned to this completion until all interests have been consolidated or a non-standard unit has been approved by the division.

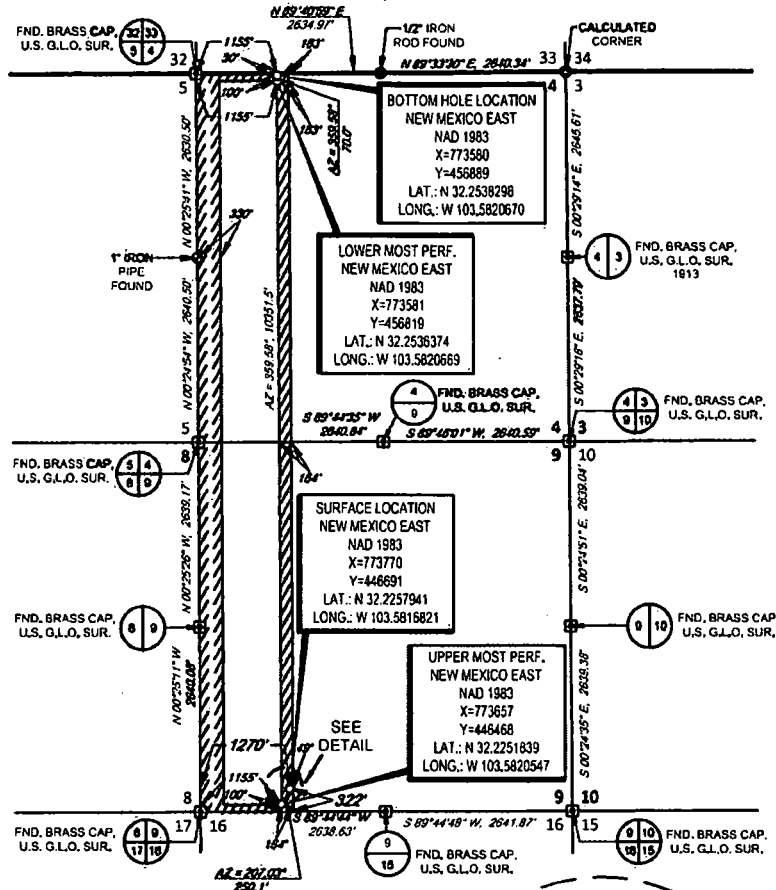


<sup>17</sup> OPERATOR CERTIFICATION	
I hereby certify that the information contained herein is true and complete to the best of my knowledge and belief, and that this organization either owns a working interest or undivided mineral interest in the land including the proposed bottom hole location or has a right to drill this well at this location pursuant to a contract with an owner of such a mineral or working interest, or to a voluntary pooling agreement or a compulsory pooling order heretofore entered by the division.	
Signature <i>Erica Hixson</i>	Date <i>7/15/19</i>
Printed Name <i>Erica Hixson</i>	
E-mail Address <i>ehixson@taprk.com</i>	
<sup>18</sup> SURVEYOR CERTIFICATION	
I hereby certify that the well location shown on this plat was plotted from field notes of actual surveys made by me or under my supervision, and that the same is true to the best of my belief.	
Date of Survey <i>06/10/2019</i>	
Signature and Seal of Registered Professional Surveyor <i>[Signature]</i>	
Certificate Number <i>11401</i>	

# TAP ROCK

## EXHIBIT 2A

SECTION 9, TOWNSHIP 24-S, RANGE 33-E, N.M.P.M.  
LEA COUNTY, NEW MEXICO



SCALE 1" = 2000'  
0' 1000' 2000'

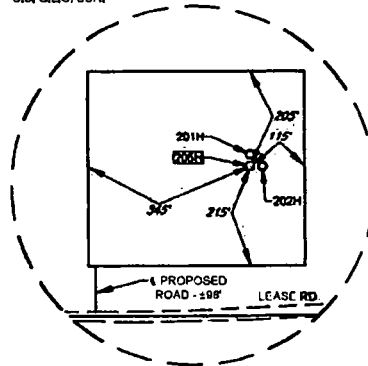
LEASE NAME & WELL NO.: POSEIDON STATE COM 205H

SECTION 9 TWP 24-S RGE 33-E SURVEY N.M.P.M.  
COUNTY LEA STATE NM  
DESCRIPTION 322' FSL & 1270' FWL

DISTANCE & DIRECTION  
FROM INT. OF NM-128 W & NM-18S, GO WEST ON NM-128 W  $\pm 23.9$   
MILES, THENCE NORTH (RIGHT) ON BRININSTOOL RD. 2-A  $\pm 1.1$  MILES,  
THENCE WEST (LEFT) ON LEASE RD.  $\pm 0.9$  MILE, THENCE NORTH  
(RIGHT) ON PROPOSED RD.  $\pm 98$  FEET, TO A POINT  $\pm 394$  FEET  
SOUTHWEST OF THE LOCATION.

ALL BEARINGS, DISTANCES, AND COORDINATE VALUES CONTAINED HEREON ARE GRID  
BASED UPON THE NEW MEXICO COORDINATE SYSTEM OF 1983, EAST ZONE, U.S. SURVEY  
FEET

THIS EASEMENT/SERVITUDE LOCATION SHOWN HEREON HAS BEEN SURVEYED ON THE GROUND  
UNDER MY SUPERVISION AND PREPARED ACCORDING TO THE EVIDENCE FOUND AT THE TIME OF  
SURVEY, AND DATA PROVIDED BY TAP ROCK OPERATING, LLC. THIS CERTIFICATION IS MADE AND  
LIMITED TO THOSE PERSONS OR ENTITIES SHOWN ON THE FACE OF THIS PLAT AND IS  
NON-TRANSFERABLE. THIS SURVEY IS CERTIFIED FOR THIS TRANSACTION ONLY.



John Trevor Carnegie, P.S. No. 11401  
JUNE 12, 2019

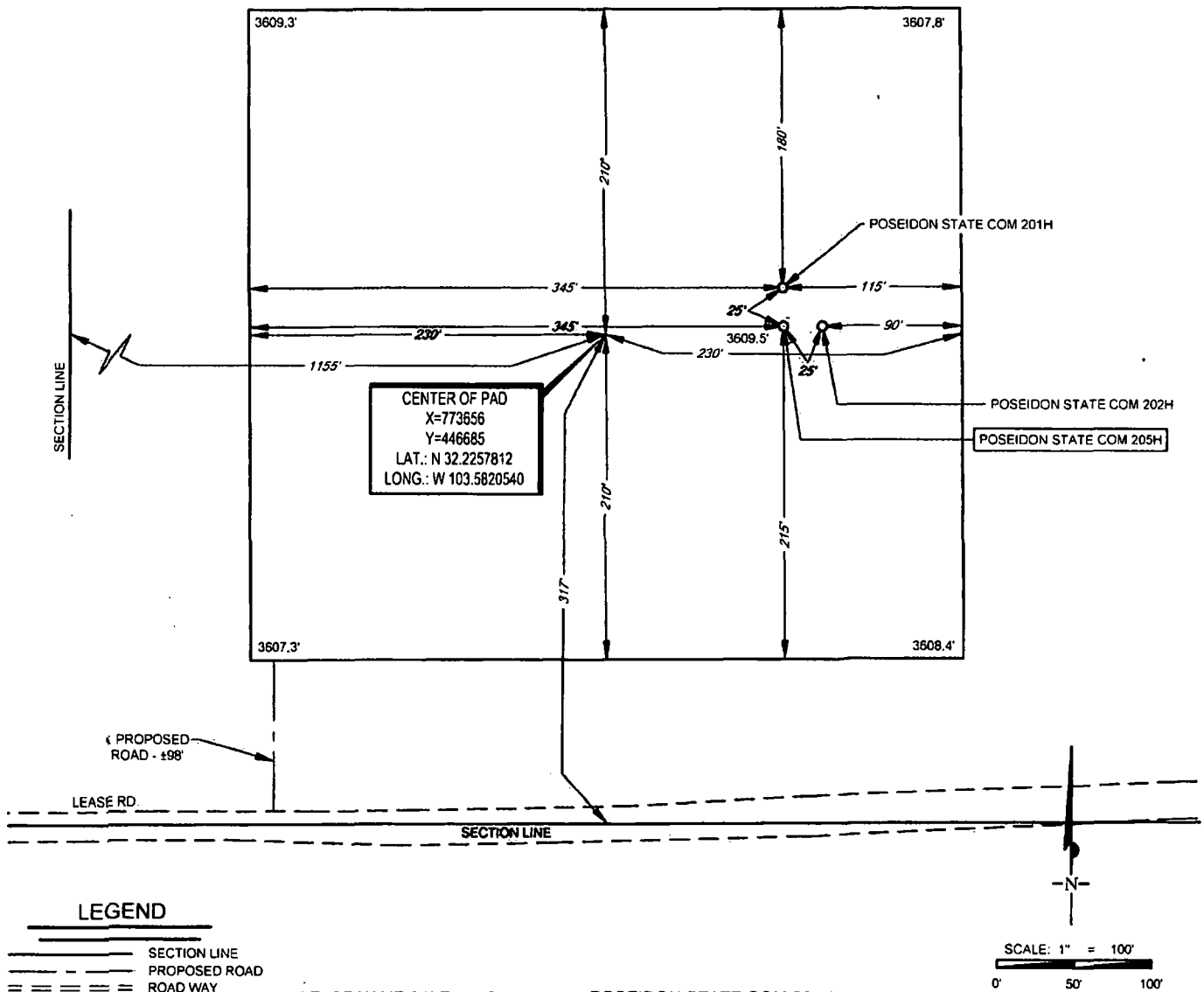
**TOPOGRAPHIC**  
LOYALTY. INNOVATION. LEGACY.  
1400 EVERMAN PARKWAY, Ste. 148 • FT. WORTH, TEXAS 76140  
TELEPHONE (817) 744-7512 • FAX (817) 744-7504  
7803 NORTH DICKSPRING • MIDLAND, TEXAS 79706  
TELEPHONE (432) 682-1553 OR (800) 787-1053 • FAX (432) 682-1743  
WWW.TOPOGRAPHIC.COM

# EXHIBIT 2B

# TAP ROCK

SECTION 9, TOWNSHIP 24-S, RANGE 33-E, N.M.P.M.  
LEA COUNTY, NEW MEXICO

DETAIL VIEW  
SCALE: 1" = 100'



## LEGEND

- SECTION LINE
- PROPOSED ROAD
- ROAD WAY

LEASE NAME & WELL NO.: POSEIDON STATE COM 205H  
205H LATITUDE N 32.2257941 205H LONGITUDE W 103.5816821

CENTER OF PAD IS 317' FSL & 1155' FWL

ALL BEARINGS, DISTANCES, AND COORDINATE VALUES CONTAINED HEREON ARE GRID BASED UPON THE NEW MEXICO COORDINATE SYSTEM OF 1983, EAST ZONE. U.S. SURVEY FEET

THIS PROPOSED PAD SITE LOCATION SHOWN HEREON HAS BEEN SURVEYED ON THE GROUND UNDER MY SUPERVISION AND PREPARED ACCORDING TO THE EVIDENCE FOUND AT THE TIME OF SURVEY, AND DATA PROVIDED BY TAP ROCK OPERATING, LLC. THIS CERTIFICATION IS MADE AND LIMITED TO THOSE PERSONS OR ENTITIES SHOWN ON THE FACE OF THIS PLAT AND IS NON-TRANSFERABLE. THIS SURVEY IS CERTIFIED FOR THIS TRANSACTION ONLY.

ORIGINAL DOCUMENT SIZE: 8.5" X 11"



**TOPOGRAPHIC**  
LOYALTY INNOVATION LEGACY

1400 EVERMAN PARKWAY, Ste. 148 • FT. WORTH, TEXAS 76140  
TELEPHONE: (817) 744-7512 • FAX (817) 744-7554  
2903 NORTH BIG SPRING • MIDLAND, TEXAS 79705  
TELEPHONE: (432) 682-1853 OR (800) 767-1853 • FAX (432) 682-1743  
WWW.TOPOGRAPHIC.COM