

District I
1625 N. French Dr., Hobbs, NM 88240
Phone: (575) 393-6161 Fax: (575) 393-0720
District II
811 S. First St., Artesia, NM 88210
Phone: (575) 748-1283 Fax: (575) 748-9720
District III
1000 Rio Brazos Road, Aztec, NM 87410
Phone: (505) 334-6178 Fax: (505) 334-6170
District IV
1220 S. St. Francis Dr., Santa Fe, NM 87505
Phone: (505) 476-3460 Fax: (505) 476-3462

State of New Mexico
Energy, Minerals & Natural Resources
Department
OIL CONSERVATION DIVISION
1220 South St. Francis Dr.
Santa Fe, NM 87505

FORM C-102
Revised August 1, 2011
Submit one copy to appropriate
District Office

☐ AMENDED REPORT

WELL LOCATION AND ACREAGE DEDICATION PLAT

| | | |
|---|--|--|
| ¹ API Number 30-025- 45477 | ² Pool Code 98180 | ³ Pool Name WC-025 G-09 S253309P; Upper Wolfcamp |
| ⁴ Property Code 317131 | ⁵ Property Name ANTIETAM 9 FED COM | |
| ⁶ OGRID No. 7377 | ⁷ Operator Name EOG RESOURCES, INC. | ⁸ Well Number #714H |
| | | ⁹ Elevation 3417' |

¹⁰Surface Location

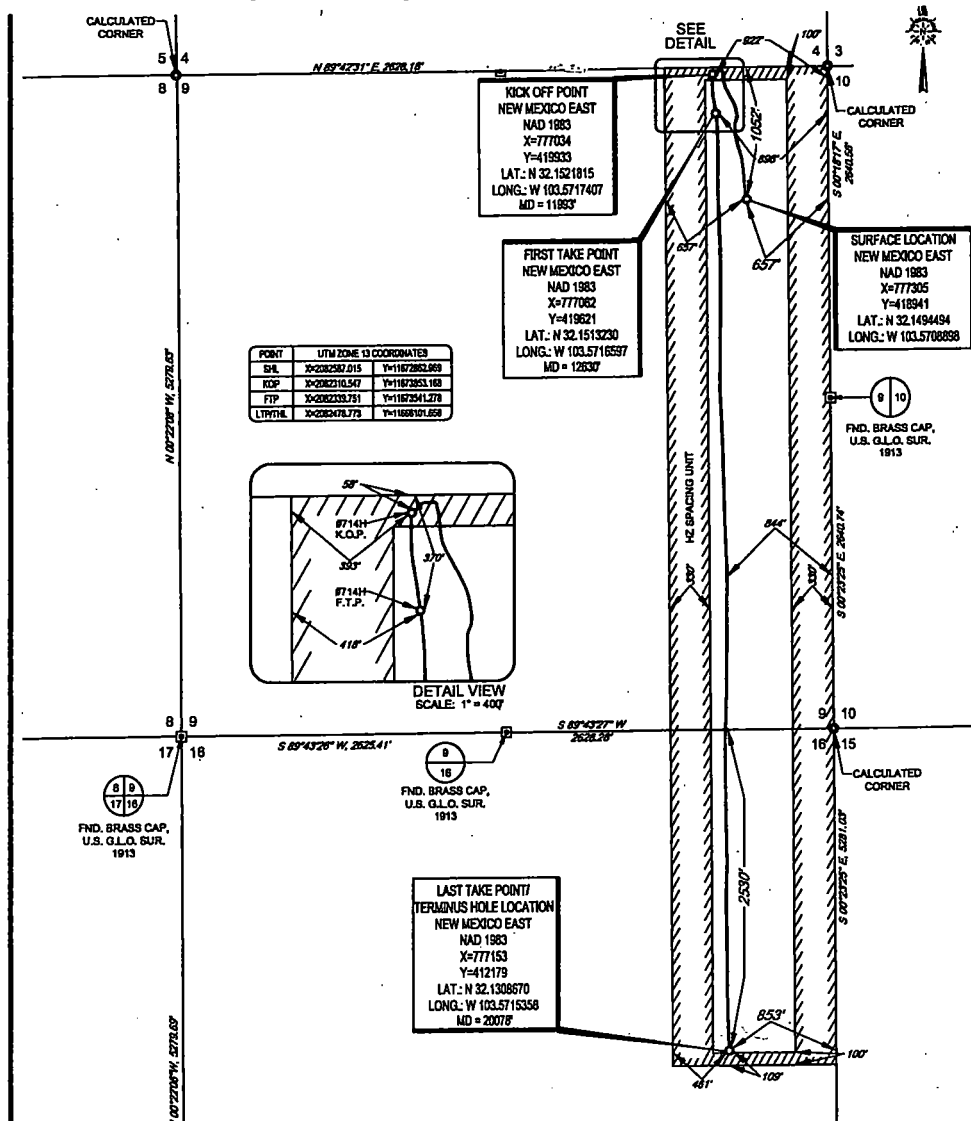
| UL or lot no. | Section | Township | Range | Lot Idn | Feet from the | North/South line | Feet from the | East/West line | County |
|---------------|----------|-------------|-------------|----------|---------------|------------------|---------------|----------------|------------|
| A | 9 | 25-S | 33-E | - | 1052' | NORTH | 657' | EAST | LEA |

¹¹Bottom Hole Location If Different From Surface

| UL or lot no. | Section | Township | Range | Lot Idn | Feet from the | North/South line | Feet from the | East/West line | County |
|---------------|-----------|-------------|-------------|----------|---------------|------------------|---------------|----------------|------------|
| H | 16 | 25-S | 33-E | - | 2530' | NORTH | 853' | EAST | LEA |

| | | | |
|--|-------------------------------|----------------------------------|-------------------------|
| ¹² Dedicated Acres 240.00 | ¹³ Joint or Infill | ¹⁴ Consolidation Code | ¹⁵ Order No. |
|--|-------------------------------|----------------------------------|-------------------------|

No allowable will be assigned to this completion until all interests have been consolidated or a non-standard unit has been approved by the division.



17 OPERATOR CERTIFICATION

I hereby certify that the information contained herein is true and complete to the best of my knowledge and belief, and that this organization either owns a working interest or unleased mineral interest in the land including the proposed bottom hole location or has a right to drill this well at this location pursuant to a contract with an owner of such a mineral or working interest, or to a voluntary pooling agreement or a compulsory pooling order heretofore entered by the division.

Signature: Kay Maddox Date: 7/15/19

Printed Name: KAY MADDOX

E-mail Address: _____

18 SURVEYOR CERTIFICATION

I hereby certify that the well location shown on this plat was plotted from field notes of actual surveys made by me or under my supervision, and that the same is true to the best of my belief.

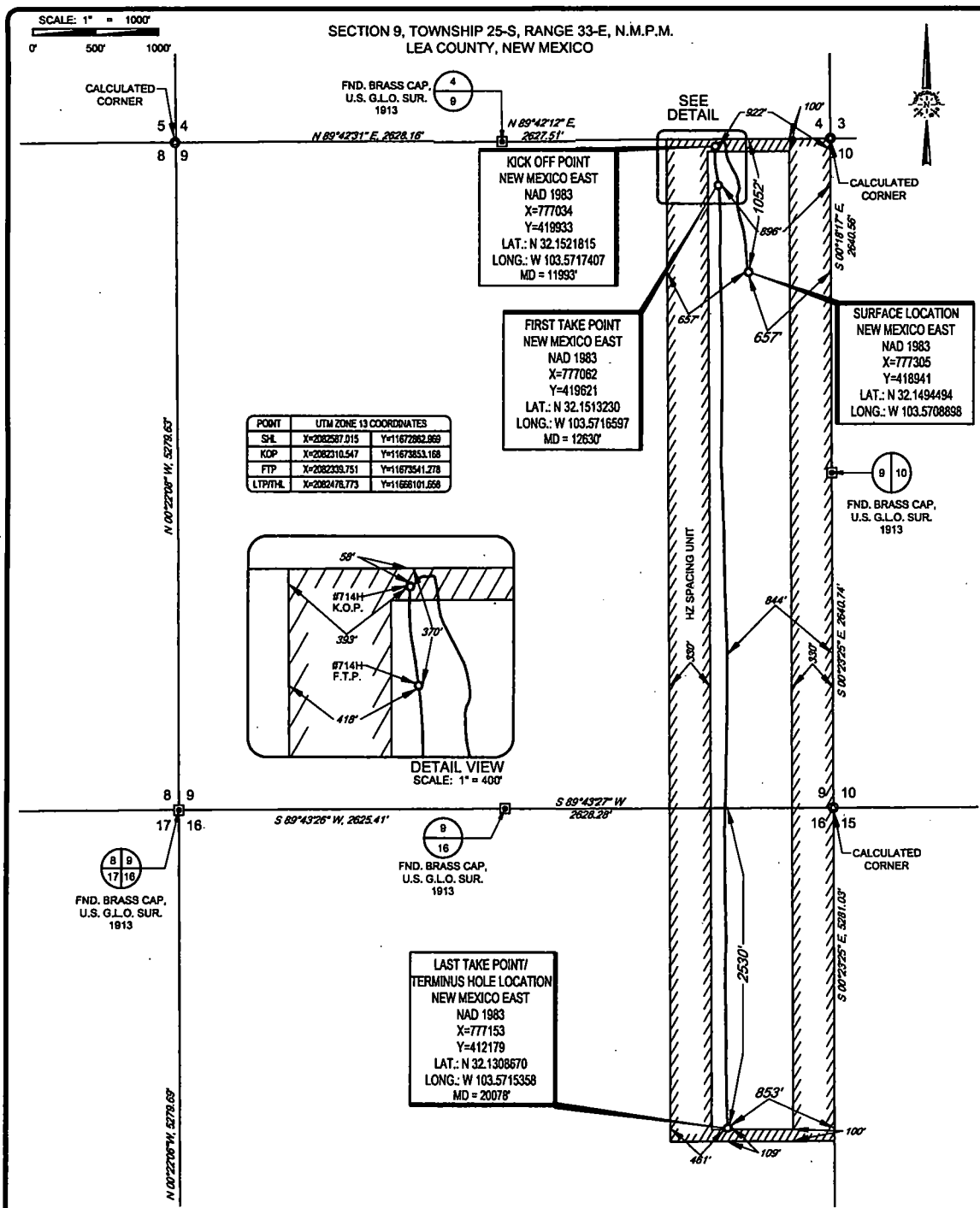
Date of Survey: 07/10/2018

Signature: [Signature]

Certificate Number: 18329

Professional Surveyor Seal: NEW MEXICO 18329 PROFESSIONAL SURVEYOR

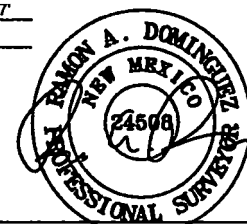
File Name: J:\ANTIETAM9FEDCOM_714H_REV1.DWG 7/10/2018 11:14:56 AM camlib5



LEASE NAME & WELL NO.: ANTIETAM 9 FED COM #714H
SECTION 9 TWP 25-S RGE 33-E SURVEY N.M.P.M.
COUNTY LEA STATE NM ELEVATION 3417'
DESCRIPTION 1052' FNL & 657' FEL

ecog resources, inc.

TOPOGRAPHIC
LOYALTY INNOVATION LEGACY
1400 EVERMAN PARKWAY, Ste. 146 - FT. WORTH, TEXAS 76140
TELEPHONE: (817) 744-7812 - FAX (817) 744-7554
TEXAS FIRM REGISTRATION NO. 10042804
WWW.TOPOGRAPHIC.COM



Ramon A. Dominguez, P.S. No. 24508
JUNE 05, 2019

| ANTIETAM 9 FED COM #714H AS-COMPLETED | REVISION: |
|---|-----------|
| DATE: 06/05/19 | |
| FILE: AD_ANTIETAM_9_FED_COM_714H | |
| DRAWN BY: JLS | |
| SHEET: 1 OF 1 | |

NOTES:
1. ORIGINAL DOCUMENT SIZE: 8.5" X 14"
2. ALL BEARINGS, DISTANCES, AND COORDINATE VALUES CONTAINED HEREIN ARE GRID BASED UPON THE NEW MEXICO COORDINATE SYSTEM, EAST ZONE, U.S. SURVEY FEET, NORTH AMERICAN DATUM 1983.
3. THIS WELL LOCATION SHOWN HEREON HAS BEEN SURVEYED ON THE GROUND UNDER MY SUPERVISION AND PREPARED ACCORDING TO THE EVIDENCE FOUND AT THE TIME OF SURVEY, AND DATA PROVIDED BY EOG RESOURCES, INC. THIS CERTIFICATION IS MADE AND LIMITED TO THOSE PERSONS OR ENTITIES SHOWN ON THE FACE OF THIS PLAT AND IS NON-TRANSFERABLE. THIS SURVEY IS CERTIFIED FOR THIS TRANSACTION ONLY.