

District I
1625 N. French Dr., Hobbs, NM 88240
Phone: (575) 393-6161 Fax: (575) 393-0720
District II
811 S. First St., Artesia, NM 88210
Phone: (575) 748-1283 Fax: (575) 748-9720
District III
1000 Rio Brazos Road, Aztec, NM 87410
Phone: (505) 334-6178 Fax: (505) 334-6170
District IV
1220 S. St. Francis Dr., Santa Fe, NM 87505
Phone: (505) 476-3460 Fax: (505) 476-3462

State of New Mexico
Energy, Minerals & Natural Resources
Department
OIL CONSERVATION DIVISION
1220 South St. Francis Dr.
Santa Fe, NM 87505

FORM C-102

Revised August 1, 2011

Submit one copy to appropriate

District Office

HOBBES OCD
RECEIVED
JUL 22 2019
As Drilled Plat
AMENDED REPORT

WELL LOCATION AND ACREAGE DEDICATION PLAT

¹ API Number 30-025-44937		² Pool Code 96434	³ Pool Name Red Hills; Bone Spring, North
⁴ Property Code 32609	⁵ Property Name CARL MOTTEK FEDERAL		⁶ Well Number 125H
⁷ OGRID No. 228937	⁸ Operator Name MATADOR PRODUCTION COMPANY		⁹ Elevation 3578'

¹⁰Surface Location

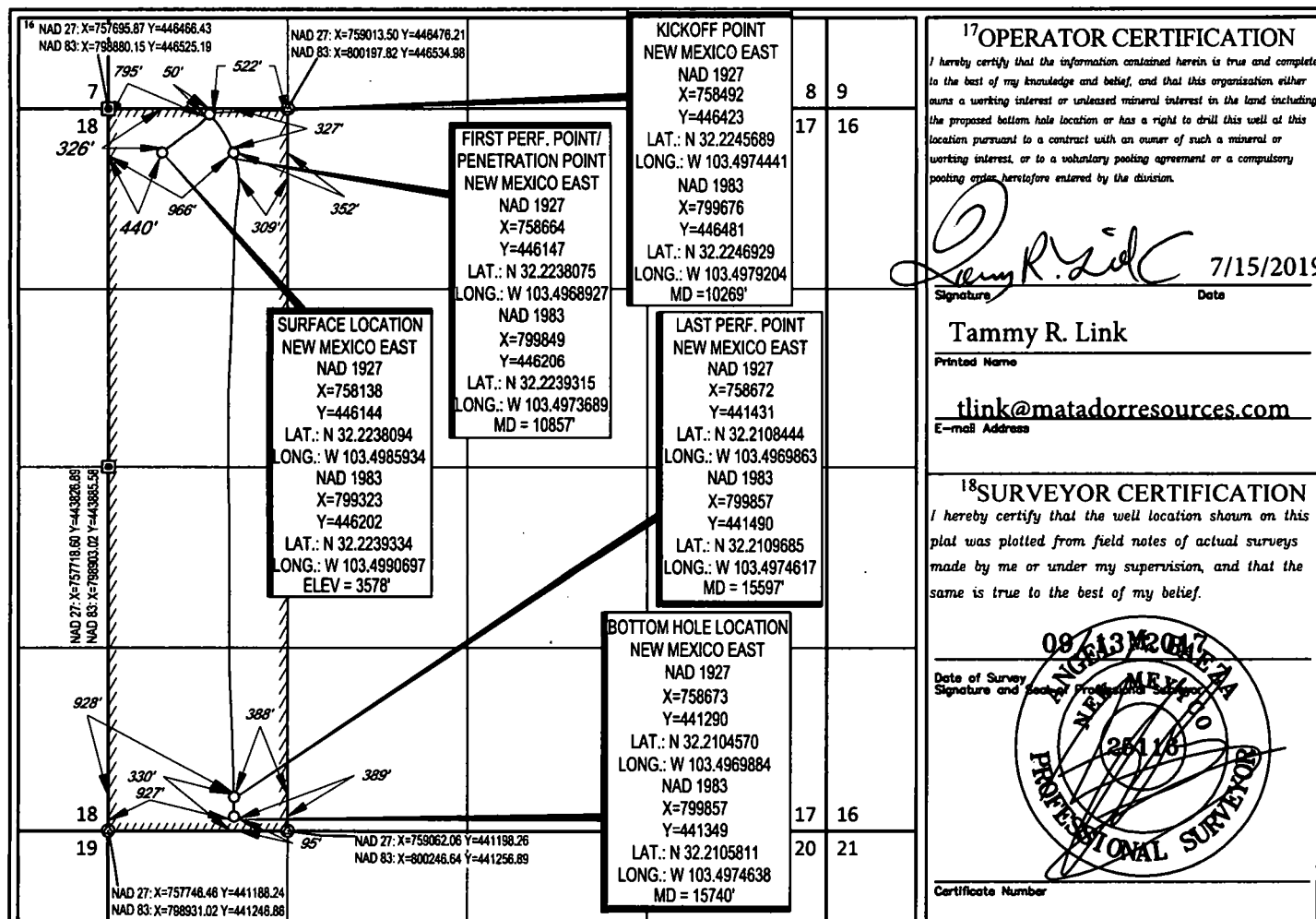
UL or lot no.	Section	Township	Range	Lot Idn	Feet from the	North/South line	Feet from the	East/West line	County
D	17	24-S	34-E	-	326'	NORTH	440'	WEST	LEA

¹¹Bottom Hole Location If Different From Surface

UL or lot no.	Section	Township	Range	Lot Idn	Feet from the	North/South line	Feet from the	East/West line	County
M	17	24-S	34-E	-	95'	SOUTH	927'	WEST	LEA

¹² Dedicated Acres 160	¹³ Joint or Infill	¹⁴ Consolidation Code	¹⁵ Order No.
--------------------------------------	-------------------------------	----------------------------------	-------------------------

No allowable will be assigned to this completion until all interests have been consolidated or a non-standard unit has been approved by the division.



SCALE: 1" = 1000'
0' 500' 1000'

FND. BRASS CAP,
U.S. G.L.O. SUR.
1913

SECTION 17, TOWNSHIP 24-S, RANGE 34-E, N.M.P.M.
LEA COUNTY, NEW MEXICO

FND. BRASS CAP,
U.S. G.L.O. SUR.
1913

FND. BRASS CAP,
U.S. G.L.O. SUR.
1913

FND. BRASS CAP,
U.S. G.L.O. SUR.
1913

**SURFACE LOCATION
NEW MEXICO EAST**
NAD 1927
X=758138
Y=446144
LAT.: N 32.2238094
LONG.: W 103.4985934
NAD 1983
X=799323
Y=446202
LAT.: N 32.2239334
LONG.: W 103.4990697
ELEV = 3578'

**KICKOFF POINT
NEW MEXICO EAST**
NAD 1927
X=758492
Y=446423
LAT.: N 32.2245689
LONG.: W 103.4974441
NAD 1983
X=799676
Y=446481
LAT.: N 32.2246929
LONG.: W 103.4979204
MD = 10269'

**FIRST PERF. POINT/
PENETRATION POINT
NEW MEXICO EAST**
NAD 1927
X=758664
Y=446147
LAT.: N 32.2238075
LONG.: W 103.4968927
NAD 1983
X=799849
Y=446206
LAT.: N 32.2239315
LONG.: W 103.4973689
MD = 10857'

**LAST PERF. POINT
NEW MEXICO EAST**
NAD 1927
X=758672
Y=441431
LAT.: N 32.2108444
LONG.: W 103.4969863
NAD 1983
X=799857
Y=441490
LAT.: N 32.2109685
LONG.: W 103.4974617
MD = 15597'

**BOTTOM HOLE LOCATION
NEW MEXICO EAST**
NAD 1927
X=758673
Y=441290
LAT.: N 32.2104570
LONG.: W 103.4969884
NAD 1983
X=799857
Y=441349
LAT.: N 32.2105811
LONG.: W 103.4974638
MD = 15740'

CALCULATED
CORNER

CALCULATED
CORNER

CALCULATED
CORNER

LEASE NAME & WELL NO.: CARL MOTTEK FEDERAL 125H
SECTION 17 TWP 24-S RGE 34-E SURVEY N.M.P.M.
COUNTY EDDY STATE NM ELEVATION 3578'
DESCRIPTION 326' FNL & 440' FWL



TOPOGRAPHIC
LOYALTY INNOVATION LEGACY

1400 EVERMAN PARKWAY, Ste. 148 • FT. WORTH, TEXAS 76140
TELEPHONE: (817) 744-7512 • FAX (817) 744-7554
2903 NORTH BIG SPRING • MIDLAND, TEXAS 79705
TELEPHONE: (432) 682-1653 OR (800) 787-1853 • FAX (432) 682-1743
WWW.TOPOGRAPHIC.COM



Angel M. Baeza, P.S. No. 25116
JUNE 4, 2019

CARL MOTTEK 125H
AS-COMPLETED

REVISION:

NOTES:

1. ORIGINAL DOCUMENT SIZE: 8.5" X 11"
2. ALL BEARINGS, DISTANCES, AND COORDINATE VALUES CONTAINED HEREIN ARE GRID BASED UPON THE NEW MEXICO COORDINATE SYSTEM OF 1983, EAST ZONE, U.S. SURVEY FEET.
3. THIS WELL LOCATION SHOWN HEREON HAS BEEN SURVEYED ON THE GROUND UNDER MY SUPERVISION AND PREPARED ACCORDING TO THE EVIDENCE FOUND AT THE TIME OF SURVEY, AND DATA PROVIDED BY MATADOR PRODUCTION COMPANY. THIS CERTIFICATION IS MADE AND LIMITED TO THOSE PERSONS OR ENTITIES SHOWN ON THE FACE OF THIS PLAT AND IS NON-TRANSFERABLE. THIS SURVEY IS CERTIFIED FOR THIS TRANSACTION ONLY.

DATE: 06/04/2019

FILE:AD_CARL_MOTTEK_125H

DRAWN BY: AMD

SHEET: 1 OF 1