

DISTRICT I  
1625 N. French Dr., Hobbs, NM 88240  
Phone (505) 833-6181 Fax: (505) 833-6720

DISTRICT II  
811 S. First St., Artesia, NM 88210  
Phone (505) 748-1253 Fax: (505) 748-9720

DISTRICT III  
1000 Rio Brazos Rd., Artesia, NM 87410  
Phone (505) 834-6176 Fax: (505) 834-6170

DISTRICT IV  
1220 S. St. Francis Dr., Santa Fe, NM 87505  
Phone (505) 476-3460 Fax: (505) 476-3463

State of New Mexico  
Energy, Minerals and Natural Resources Department

OIL CONSERVATION DIVISION

1220 South St. Francis Dr.  
Santa Fe, New Mexico 87505

Form C-102  
Revised August 1, 2011

Submit one copy to appropriate  
District Office

WELL LOCATION AND ACREAGE DEDICATION PLAT

☐ AMENDED REPORT

API Number <b>30-041-20987</b>	Pool Code <b>12049</b>	Pool Name <b>CHAUVEROO; SAN ANDRES</b>
Property Code <b>303378</b>	Property Name <b>HALEY CHAUVEROO SAU</b>	Well Number <b>303H</b>
QGRID No. <b>164557</b>	Operator Name <b>RIDGEWAY ARIZONA OIL CORP</b>	Elevation <b>4400'</b>

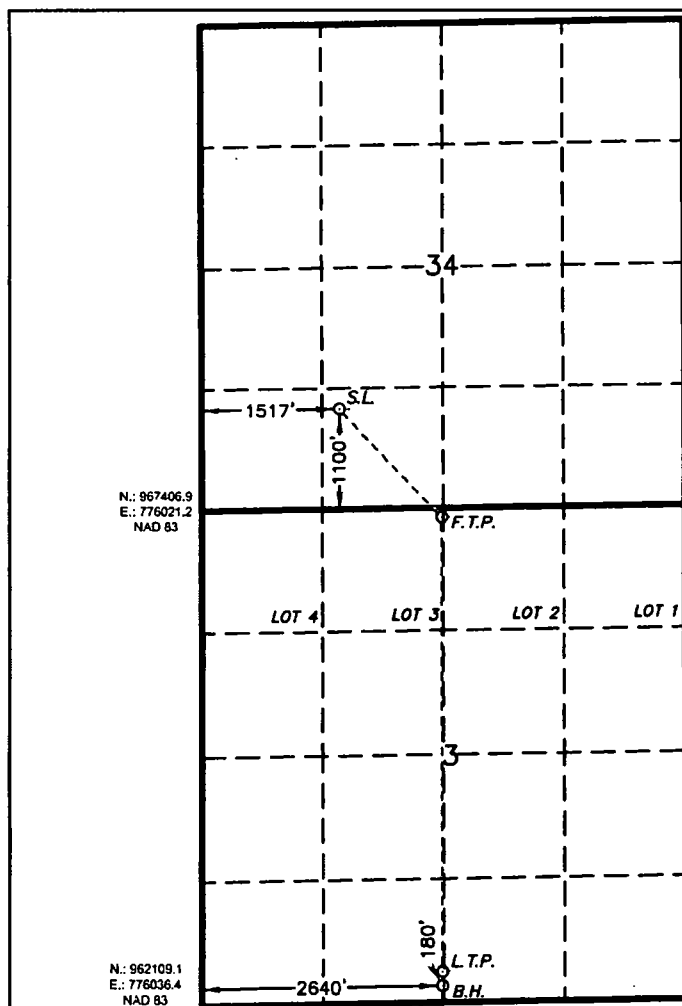
Surface Location

UL or lot No.	Section	Township	Range	Lot Idn	Feet from the	North/South line	Feet from the	East/West line	County
N	34	7 S	33 E		1100	SOUTH	1477	WEST	ROOSEVELT

Bottom Hole Location If Different From Surface

UL or lot No.	Section	Township	Range	Lot Idn	Feet from the	North/South line	Feet from the	East/West line	County
N	3	8 S	33 E		180	SOUTH	2640	WEST	CHAVES
Dedicated Acres	Joint or Infill	Consolidation Code	Order No.						

NO ALLOWABLE WILL BE ASSIGNED TO THIS COMPLETION UNTIL ALL INTERESTS HAVE BEEN CONSOLIDATED  
OR A NON-STANDARD UNIT HAS BEEN APPROVED BY THE DIVISION



N: 972775.5  
E: 781298.6  
NAD 83

**SURFACE LOCATION**  
Lat - N 33.659916°  
Long - W 103.557082°  
NMSPC- N 968530.8  
E 777533.4  
(NAD-83)

**FIRST TAKE POINT**  
100 FNL & 2640 FWL  
Lat - N 33.656645°  
Long - W 103.553407°  
NMSPC- N 967348.9  
E 778660.5  
(NAD-83)

N: 967491.3  
E: 781324.3  
NAD 83

**LAST TAKE POINT**  
330 FSL & 2640 FWL  
Lat - N 33.643278°  
Long - W 103.553479°  
NMSPC- N 962484.8  
E 778675.3  
(NAD-83)

**PROPOSED BOTTOM HOLE LOCATION**  
Lat - N 33.642866°  
Long - W 103.553484°  
NMSPC- N 962334.7  
E 778674.9  
(NAD-83)

N: 962200.9  
E: 781350.3  
NAD 83

OPERATOR CERTIFICATION

I hereby certify that the information contained herein is true and complete to the best of my knowledge and belief, and that this organization either owns a working interest or unleased mineral interest in the land including the proposed bottom hole location or has a right to drill this well at this location pursuant to a contract with an owner of such a mineral or working interest or to a voluntary pooling agreement or a compulsory pooling order heretofore entered by the division.

Signature: William Boyd Date: 6/12/2019  
Printed Name: William Boyd  
Email Address: wboyde@pederco.com

SURVEYOR CERTIFICATION

I hereby certify that the well location shown on this plat was plotted from field notes of actual surveys made by me or under my supervision, and that the same is true and correct to the best of my belief.

Date Surveyed: June 11, 2019  
Signature: [Signature]  
Professional Surveyor: 7977

Certification No.: 0091 Jones 7977  
BASIC SURVEYS

0' 1000' 2000' 3000' 4000'  
SCALE: 1" = 2000'  
WO Num.: 34636