

District I  
1625 N. French Dr., Hobbs, NM 88240  
Phone: (575) 393-6161 Fax: (575) 393-0720  
District II  
811 S. First St., Artesia, NM 88210  
Phone: (575) 748-1283 Fax: (575) 748-9720  
District III  
1000 Rio Brazos Road, Aztec, NM 87410  
Phone: (505) 334-6178 Fax: (505) 334-6170  
District IV  
1220 S. St. Francis Dr., Santa Fe, NM 87505  
Phone: (505) 476-3460 Fax: (505) 476-3462

State of New Mexico  
Energy, Minerals & Natural Resources  
Department  
OIL CONSERVATION DIVISION  
1220 South St. Francis Dr.  
Santa Fe, NM 87505

FORM C-102  
Revised August 1, 2011  
Submit one copy to appropriate  
District Office

☐ AMENDED REPORT

WELL LOCATION AND ACREAGE DEDICATION PLAT

<sup>1</sup> API Number 30-025- <b>45636</b>	<sup>2</sup> Pool Code 59900	<sup>3</sup> Pool Name Triple X; Bone Spring
<sup>4</sup> Property Code <b>313956</b>	<sup>5</sup> Property Name NEPTUNE 10 STATE COM	<sup>6</sup> Well Number <b>301H</b>
<sup>7</sup> GRID No. 7377	<sup>8</sup> Operator Name EOG RESOURCES, INC.	<sup>9</sup> Elevation <b>3615'</b>

<sup>10</sup>Surface Location

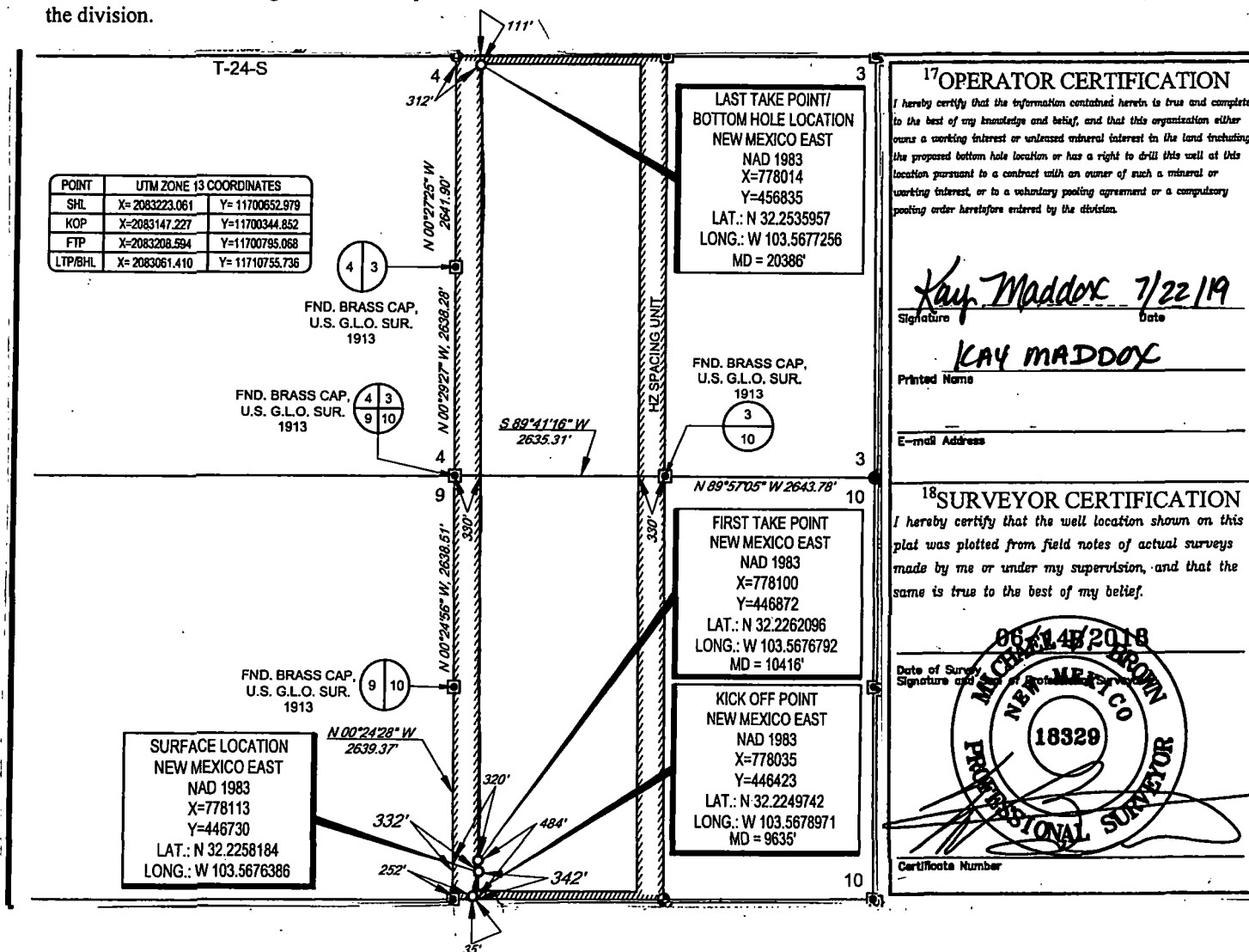
UL or lot no.	Section	Township	Range	Lot Idn	Feet from the	North/South line	Feet from the	East/West line	County
<b>M</b>	<b>10</b>	<b>24-S</b>	<b>33-E</b>	<b>-</b>	<b>342'</b>	<b>SOUTH</b>	<b>332'</b>	<b>WEST</b>	<b>LEA</b>

<sup>11</sup>Bottom Hole Location If Different From Surface

UL or lot no.	Section	Township	Range	Lot Idn	Feet from the	North/South line	Feet from the	East/West line	County
<b>D</b>	<b>3</b>	<b>24-S</b>	<b>33-E</b>	<b>-</b>	<b>111'</b>	<b>NORTH</b>	<b>312'</b>	<b>WEST</b>	<b>LEA</b>

<sup>12</sup> Dedicated Acres <b>640</b>	<sup>13</sup> Joint or Infill	<sup>14</sup> Consolidation Code	<sup>15</sup> Order No.
---	-------------------------------	----------------------------------	-------------------------

No allowable will be assigned to this completion until all interests have been consolidated or a non-standard unit has been approved by the division.

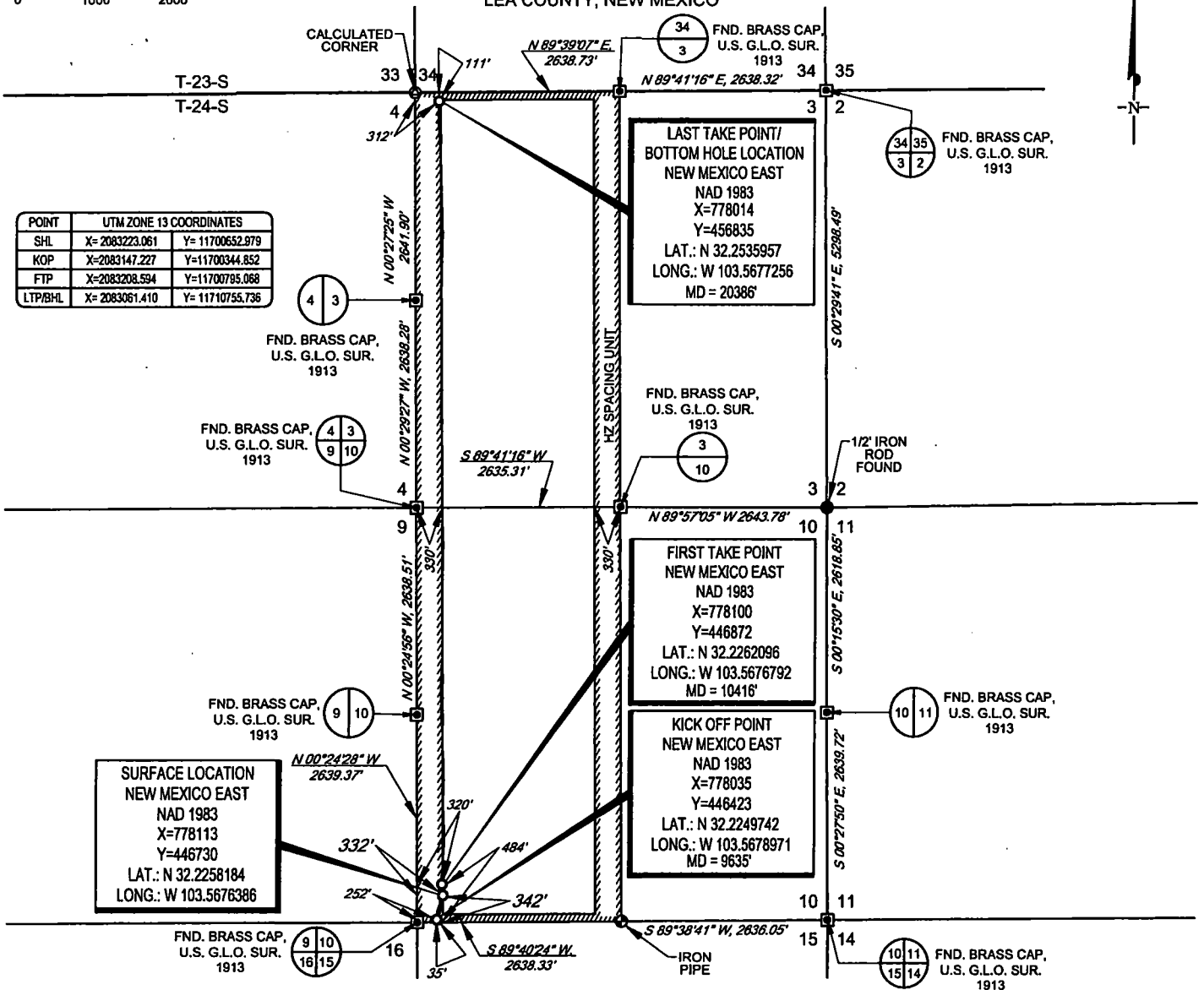


SCALE: 1" = 2000'

0' 1000' 2000'

SECTION 10 TOWNSHIP 24-S, RANGE 33-E, N.M.P.M.  
LEA COUNTY, NEW MEXICO

POINT	UTM ZONE 13 COORDINATES
SHL	X=2083223.061 Y=11700652.979
KOP	X=2083147.227 Y=11700344.852
FTP	X=2083208.594 Y=11700795.068
LTP/BHL	X=2083061.410 Y=11710755.736

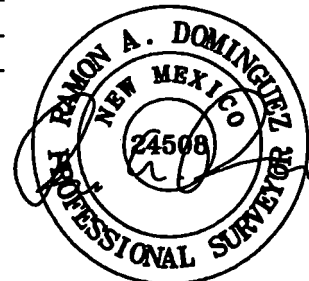


LEASE NAME & WELL NO.: NEPTUNE 10 STATE COM #301H  
SECTION 10 TWP 24-S RGE 33-E SURVEY N.M.P.M.  
COUNTY LEA STATE NM ELEVATION 3615'  
DESCRIPTION 342' FSL & 332' FWL



**TOPOGRAPHIC**  
LOYALTY INNOVATION LEGACY

1400 EVERMAN PARKWAY, Ste. 148 • FT. WORTH, TEXAS 76140  
TELEPHONE: (817) 744-7512 • FAX (817) 744-7554  
TEXAS FIRM REGISTRATION NO. 10042504  
WWW.TOPOGRAPHIC.COM



Ramon A. Dominguez, P.S. No. 24508  
JULY 19, 2019

**Geog resources, Inc.**

NEPTUNE 10 STATE COM  
#301H  
AS-COMPLETED

DATE: 07/19/2019

FILE: AD\_NEPTUNE\_10\_STATE\_COM\_301H\_REV1

DRAWN BY: A.V.F.

SHEET: 1 OF 1

REVISION:

INT DATE

NOTES:

1. ORIGINAL DOCUMENT SIZE: 8.5" X 11"
2. ALL BEARINGS, DISTANCES, AND COORDINATE VALUES CONTAINED HEREIN ARE GRID BASED UPON THE NEW MEXICO COORDINATE SYSTEM, EAST ZONE, U.S. SURVEY FEET, NORTH AMERICAN DATUM 1983.
3. THIS WELL LOCATION SHOWN HEREON HAS BEEN SURVEYED ON THE GROUND UNDER MY SUPERVISION AND PREPARED ACCORDING TO THE EVIDENCE FOUND AT THE TIME OF SURVEY, AND DATA PROVIDED BY EOG RESOURCES, INC. THIS CERTIFICATION IS MADE AND LIMITED TO THOSE PERSONS OR ENTITIES SHOWN ON THE FACE OF THIS PLAT AND IS NON-TRANSFERABLE. THIS SURVEY IS CERTIFIED FOR THIS TRANSACTION ONLY.